



## LISTING DATA

**Available SF:** Suites 3640 - 3644 | 8,400 SF  
Divisible to 3,600 & 4,800 SF  
Suite 3620 | 8,400 SF

**Building Size:** 39,600 SF

**Clear Height:** 18'

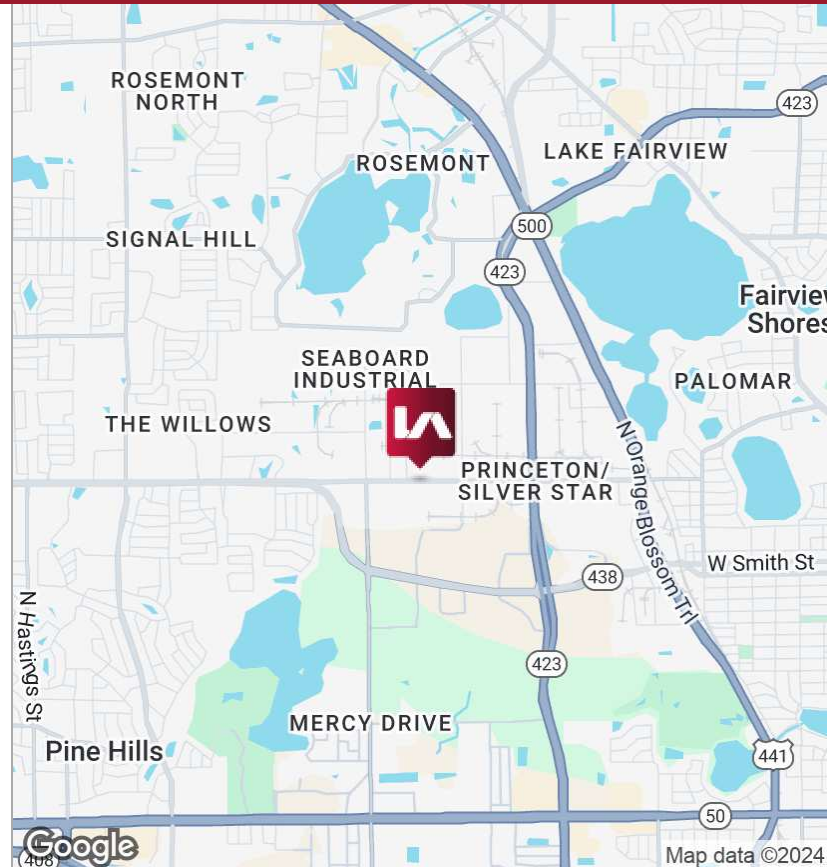
**Zoned:** I-P/W, City of Orlando

**Loading:** Rear

## ECONOMIC DATA

**Lease Rate:** \$14.50/SF NNN

**Op Ex:** \$3.53/SF

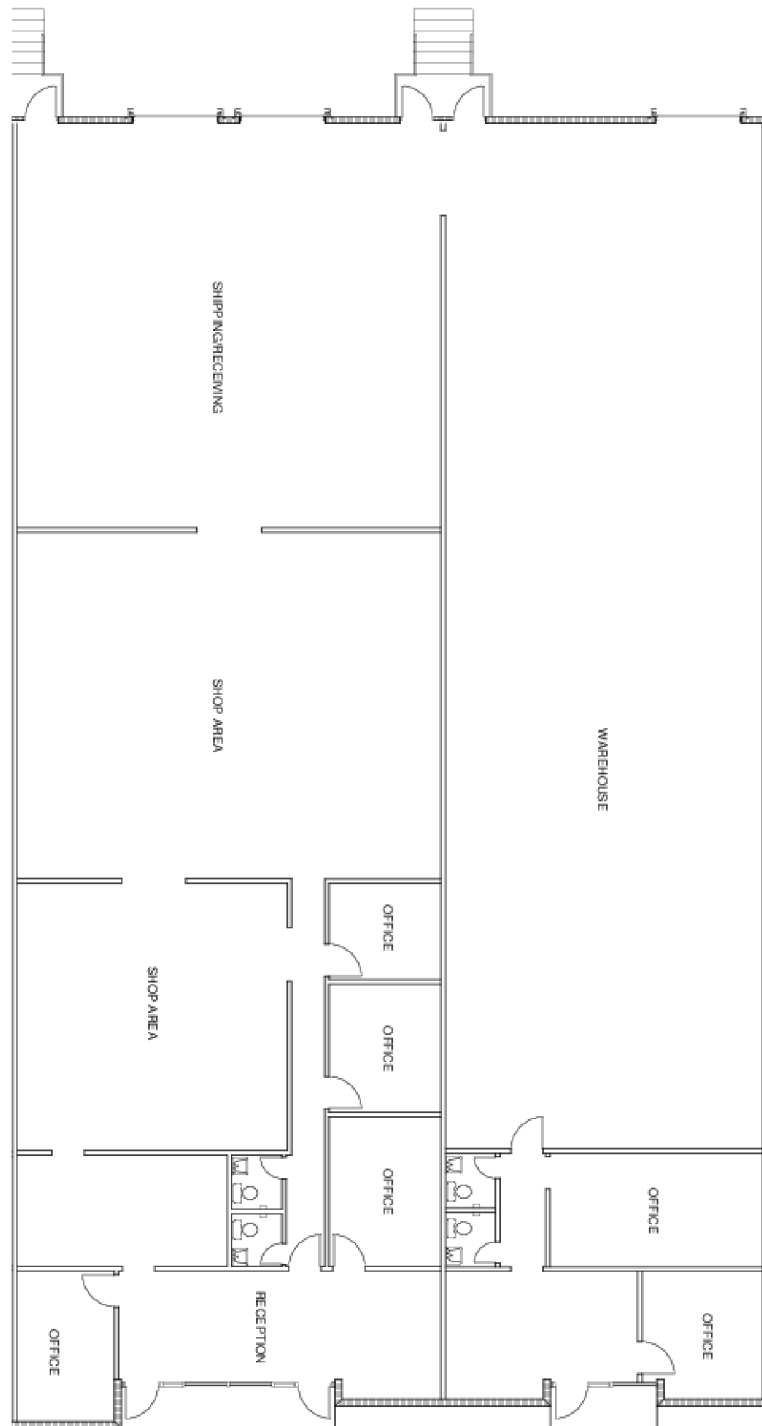




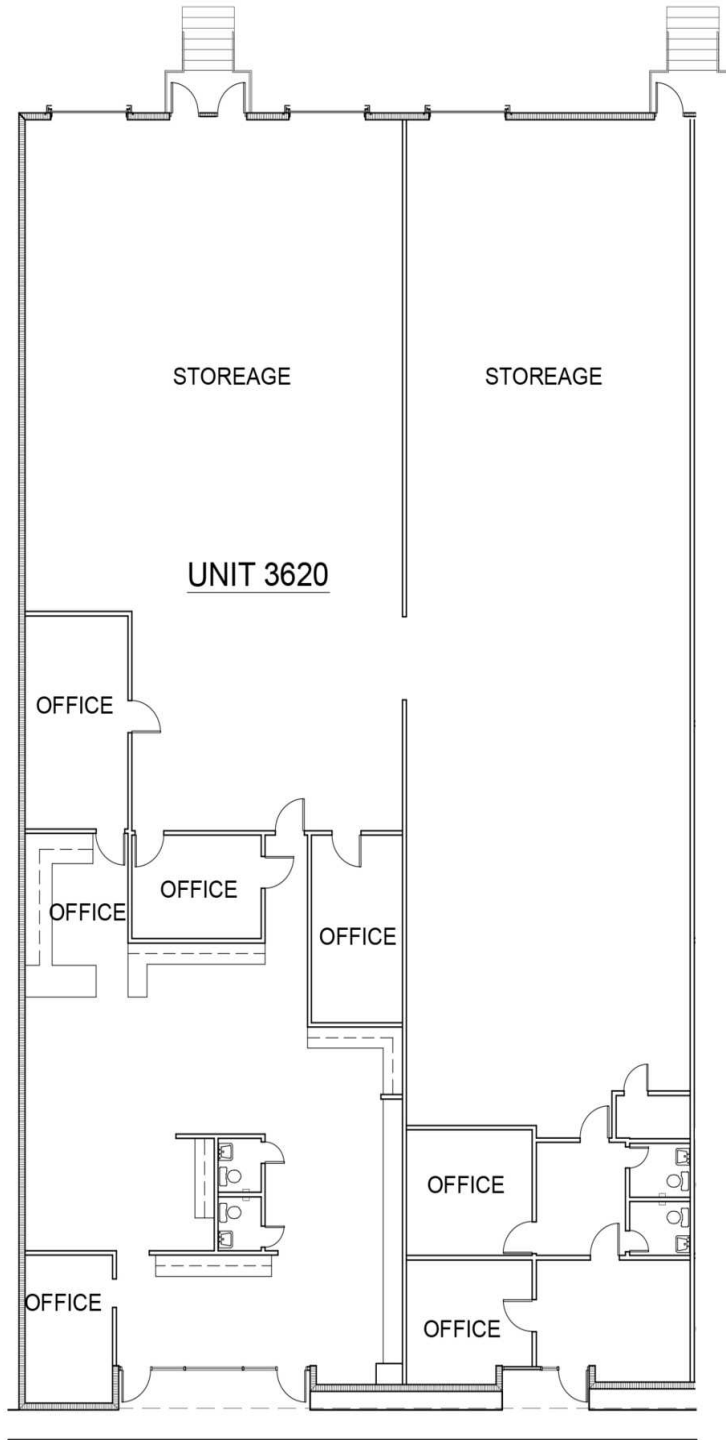
**AVAILABLE SPACES**

SUITE	SIZE (SF)	LEASE TYPE	LEASE RATE	DESCRIPTION
Suites 3640-3644	8,400 SF	NNN	\$14.50 SF/yr	2,063 SF Office with 3 Dock High Doors
Suite 3620	8,400 SF	NNN	\$14.50 SF/yr	3,083 SF Office with One (1) dock high door and one (1) 10' wide x 12' high grade level door





Suite 3640 - 3644 | 8,400 SF



SUITE 3620 SF

