



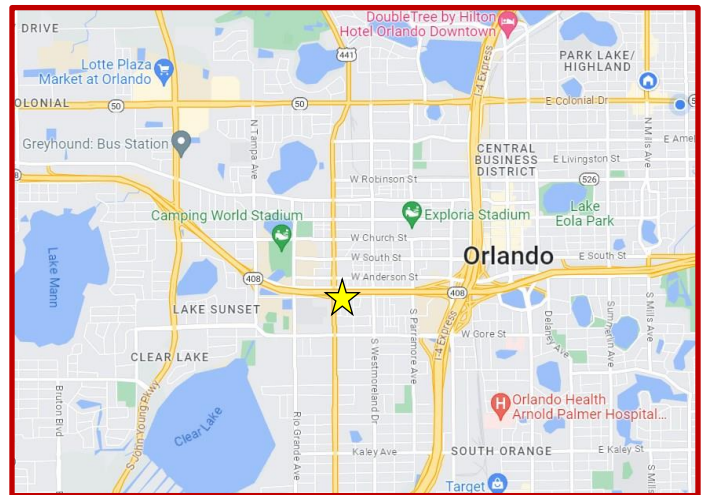
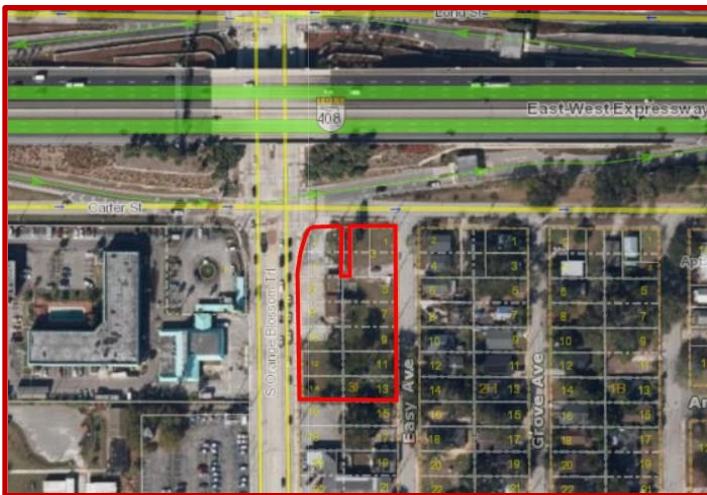
# C. Brenner, Inc.

1510 E. Colonial Dr. Suite 307  
Orlando, FL 32803  
Phone: (407) 677-1700

COMMERCIAL REAL ESTATE

## 1 Acre Highway Frontage For Sale Downtown Orlando

707 S Orange Blossom Trail, Orlando, FL 32805



- Prime development opportunity in an appreciating Downtown Orlando market
- 8 parcels assembled for a total of 1.04 acres
- AC-1 zoning allows most commercial uses, such as retail, QSR, and multifamily
- Corner lot can accommodate multiple points of ingress/egress
- Adjacent to entry and exit ramp to HWY 408
- Close to 100,000 vpd traffic count between Orange Blossom Tr and HWY 408
- Near Camping World Stadium, Orlando City Soccer Stadium, Amway Center, and Orlando Sports & Entertainment District
- Asking \$1,399,000, bring all qualified offers
- Billboard site is not included in the sale

Ben Brenner  
Lic. RE Broker  
C. Brenner Inc.

Cell: 407-970-6447  
Office: 407-677-1700  
Email: [bbrenner@cbrenner.com](mailto:bbrenner@cbrenner.com)

*Expect Results with C Brenner Inc!*

[www.cbrenner.com](http://www.cbrenner.com)