



# HAVENDALE BLVD RETAIL SPACE

521 HUGHES RD,  
AUBURNDALE, FL 33823

Gary Ralston, CCIM, SIOR, CRE, CPM, CRRP, FRICS  
863.738.2246  
gary.ralston@svn.com

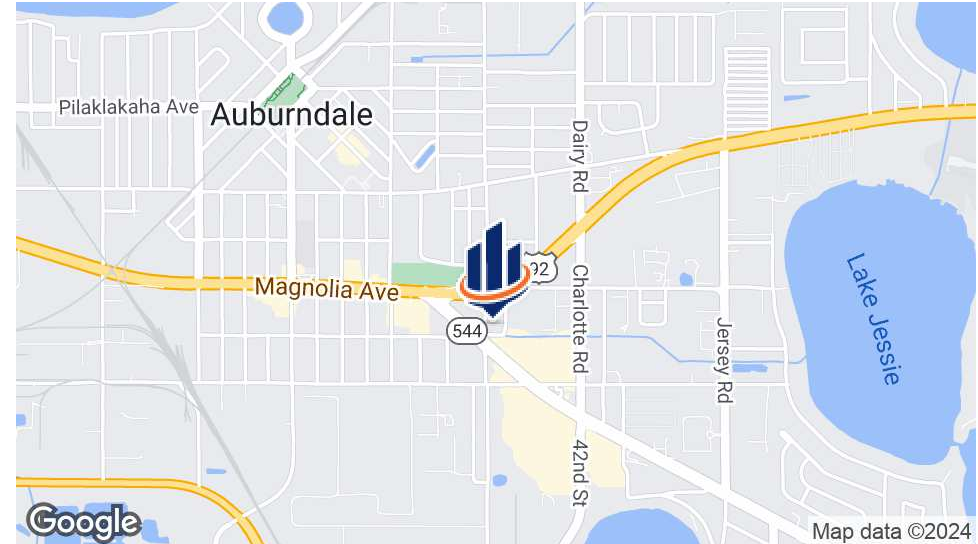
David Lapham  
517.990.4907  
david.lapham@svn.com

Trace Linder  
863.287.3281  
trace.linder@svn.com

Sid Bhatt, CCIM, SIOR  
704.930.8179  
sid.bhatt@svn.com



# Property Summary



## OFFERING SUMMARY

<b>Sale Price:</b>	<b>\$3,000,000</b>
Building Size:	18,277 SF
Available SF:	18,277 SF
Lot Size:	0.68 Acres
Price / SF:	\$164.14
Year Built:	2006
Zoning:	C3
Traffic Count:	27,000 ± Cars/Day on Havendale Blvd 39,500 ± Cars/Day on U.S Hwy 92

## PROPERTY OVERVIEW

This is an investment opportunity in Auburndale, FL. This 18,277 SF free-standing building, completed in 2006, offers a prime location in the heart of the thriving Auburndale area off of Havendale Boulevard. Zoned C3, the property presents a versatile space suitable for a range of retail ventures. With its modern construction and strategic positioning, this property is primed to elevate your retail portfolio. Don't miss the chance to capitalize on this high-demand asset in a dynamic commercial district.

## PROPERTY HIGHLIGHTS

- 18,277 SF free-standing building
- Built in 2006
- Located in Auburndale, FL
- 27,000 ± Cars/Day

# Property Details



## LOCATION INFORMATION

Building Name	Havendale Blvd Retail Space
Street Address	521 Hughes Rd
City, State, Zip	Auburndale, FL 33823
County	Polk

## BUILDING INFORMATION

Building Size	18,277 SF
Occupancy %	100.0%
Tenancy	Single
Year Built	2006
Roof	Steel Frame   Metal Roof
Free Standing	Yes
Number of Buildings	1
Walls	14 ft
Floor Coverings	Ceramic Clay Tile & Carpet
Interior Sprinkler %	100%

## PARKING & TRANSPORTATION

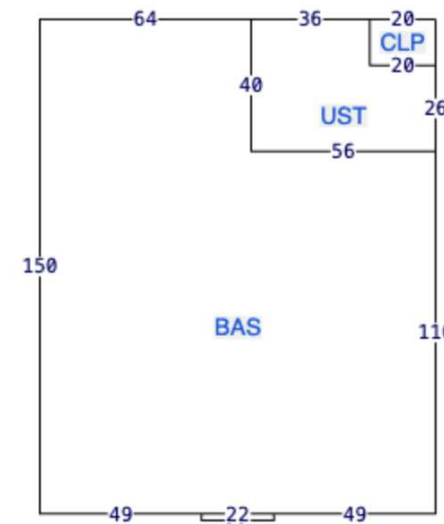
Number of Parking Spaces	29
--------------------------	----

## UTILITIES & AMENITIES

HVAC	Central
------	---------

## PROPERTY INFORMATION

Property Type	Retail
Property Subtype	Free Standing Building
Zoning	C3
Lot Size	0.68 Acres
APN #	252811000000022390, 252811000000022060
Lot Frontage	124 ft
Lot Depth	244 ft
Traffic Count	27000
Traffic Count Street	Havendale Blvd



# Location Description



## LOCATION DESCRIPTION

Located in the city of Auburndale, the area surrounding the property offers a perfect blend of convenience and accessibility. With easy access to major roadways, the location provides an easy commute for professionals. U.S. Hwy 92 is located right to the north of the property. The Polk Parkway is located in close proximity as well, sitting just 3.3 ± miles west from the subject. Downtown Winter Haven is also found just 13 ± minutes east of the property.

Nearby, Lake Myrtle Sports Park and the Auburndale City Park offer beautiful green spaces for relaxation and recreation. The area also has a variety of retailer options which include Publix, Walmart, CVS, Winn-Dixie, Wawa, and many more.



# Market Area Map





# Neighborhood Map







**Wawa**

**Domino's  
Pizza**

**BANK OF AMERICA**

27,000 ±  
Cars/Day

**SUBWAY**

**O'Reilly  
AUTO PARTS**

**TACO  
BELL**

**SUBJECT**

Havendale Blvd  
544





39,500 ±  
Cars/Day



**db** CITIZENS  
BANK & TRUST

16,400 ±  
Cars/Day

BANK OF AMERICA

27,000 ±  
Cars/Day

**SUBWAY**

**SUBJECT**

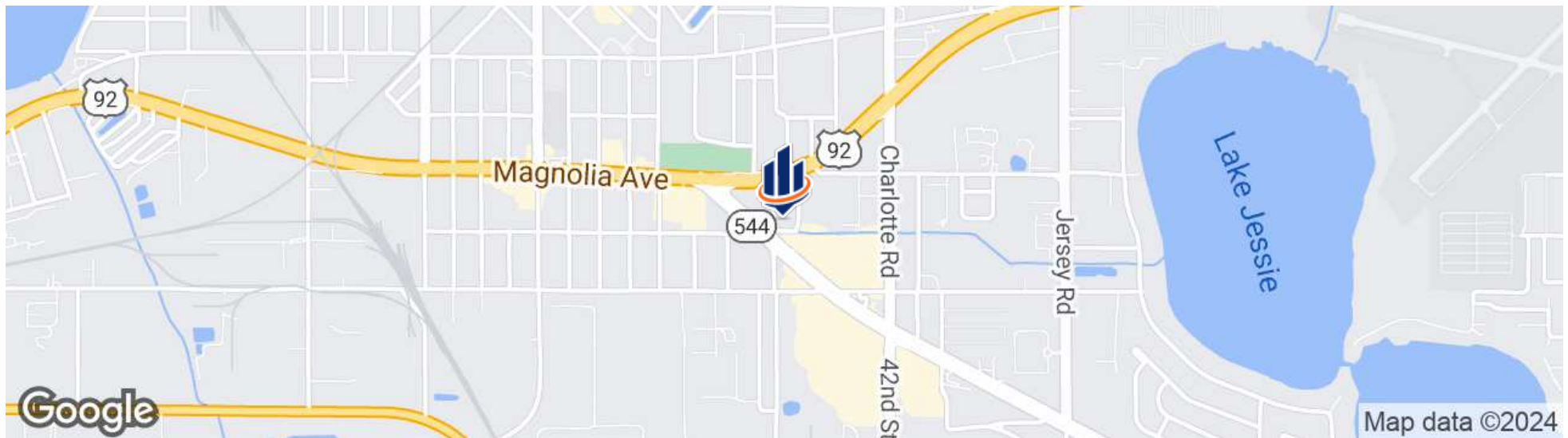


**Havendale Blvd**





# Regional & Location Map





# Benchmark Demographics



	1 Mile	2 Miles	3 Miles	5 Mins	10 Mins	15 Mins	33823 Zip	Auburndale	Polk County	FL	US
Population	6,042	19,512	42,416	15,391	61,917	125,039	38,821	18,625	812,640	22,779,514	338,440,954
Households	2,193	7,348	16,287	5,867	23,738	48,403	14,352	6,739	303,601	9,084,882	130,716,571
Families	1,394	4,729	10,643	3,676	15,341	31,717	10,160	4,895	207,373	5,826,884	83,629,781
Average Household Size	2.71	2.64	2.59	2.60	2.59	2.56	2.66	2.75	2.62	2.45	2.53
Owner Occupied Housing Units	1,243	4,643	10,753	3,514	15,366	33,001	10,717	5,025	216,091	6,029,935	84,133,084
Renter Occupied Housing Units	950	2,705	5,534	2,353	8,372	15,402	3,635	1,714	87,510	3,054,947	46,583,487
Median Age	39.5	40.4	41.0	39.9	41.3	42.1	41.9	40.7	41.2	43.5	39.3
Housing Unit/Household Ratio	1.18	1.21	1.18	1.21	1.19	1.20	1.16	1.15	1.21	1.19	1.12
Adjusted Population	6,362	21,087	44,534	16,641	65,591	133,361	40,126	19,098	878,319	24,122,879	
<b>Income</b>											
Median Household Income	\$42,496	\$47,178	\$53,979	\$44,111	\$53,732	\$55,829	\$72,702	\$78,607	\$63,515	\$74,715	\$79,068
Average Household Income	\$61,531	\$67,830	\$76,454	\$64,580	\$75,124	\$77,533	\$91,440	\$91,224	\$83,346	\$105,305	\$113,185
Per Capita Income	\$22,484	\$25,571	\$29,273	\$24,391	\$29,020	\$30,069	\$33,831	\$33,020	\$31,188	\$42,078	\$43,829
<b>Trends: 2024 - 2029 Annual Growth Rate</b>											
Population	1.25%	1.21%	1.26%	1.09%	1.37%	1.50%	1.47%	1.72%	1.93%	0.93%	0.38%
Households	1.18%	1.12%	1.18%	1.01%	1.29%	1.44%	1.39%	1.60%	1.84%	1.15%	0.64%
Families	1.07%	1.06%	1.13%	0.90%	1.24%	1.37%	1.29%	1.58%	1.80%	1.12%	0.56%
Owner HHs	2.68%	2.32%	2.31%	2.31%	2.43%	2.36%	1.93%	2.27%	2.37%	1.66%	0.97%
Median Household Income	5.33%	4.98%	5.40%	4.98%	4.90%	4.69%	4.23%	4.82%	4.27%	3.25%	2.95%

- Over 125,000 people with a median age of 42.1 within a 15-minute drive from the property.
- Median household income of over \$53,000 within a 3-mile radius from the property.



# Benchmark Demographics



1 Mile 2 Miles 3 Miles 5 Mins 10 Mins 15 Mins 33823 Zip Auburndale Polk County FL US

## Households by Income

Income Range	1 Mile	2 Miles	3 Miles	5 Mins	10 Mins	15 Mins	33823 Zip	Auburndale	Polk County	FL	US
<\$15,000	17.20%	13.00%	12.10%	14.80%	12.50%	11.90%	9.20%	8.90%	9.30%	8.40%	8.60%
\$15,000 - \$24,999	15.80%	13.20%	10.60%	14.50%	10.70%	10.20%	8.10%	7.70%	8.00%	6.60%	6.30%
\$25,000 - \$34,999	12.10%	14.90%	13.20%	13.80%	12.30%	10.80%	9.10%	8.20%	10.30%	7.40%	6.70%
\$35,000 - \$49,999	8.70%	10.50%	11.00%	10.30%	11.60%	12.50%	11.20%	9.90%	12.90%	11.00%	10.10%
\$50,000 - \$74,999	13.80%	15.20%	14.80%	15.80%	14.70%	15.20%	13.40%	13.00%	15.20%	16.90%	15.70%
\$75,000 - \$99,999	14.20%	11.20%	11.00%	11.90%	11.40%	12.90%	12.60%	13.20%	14.20%	13.60%	12.80%
\$100,000 - \$149,999	13.60%	14.30%	16.70%	13.00%	17.10%	16.40%	21.60%	24.50%	18.70%	17.20%	17.60%
\$150,000 - \$199,999	2.60%	5.00%	6.70%	3.10%	6.10%	5.90%	9.00%	10.30%	6.70%	8.60%	9.50%
\$200,000+	2.00%	2.70%	4.00%	2.80%	3.60%	4.30%	5.90%	4.40%	4.60%	10.40%	12.60%

## Population by Age

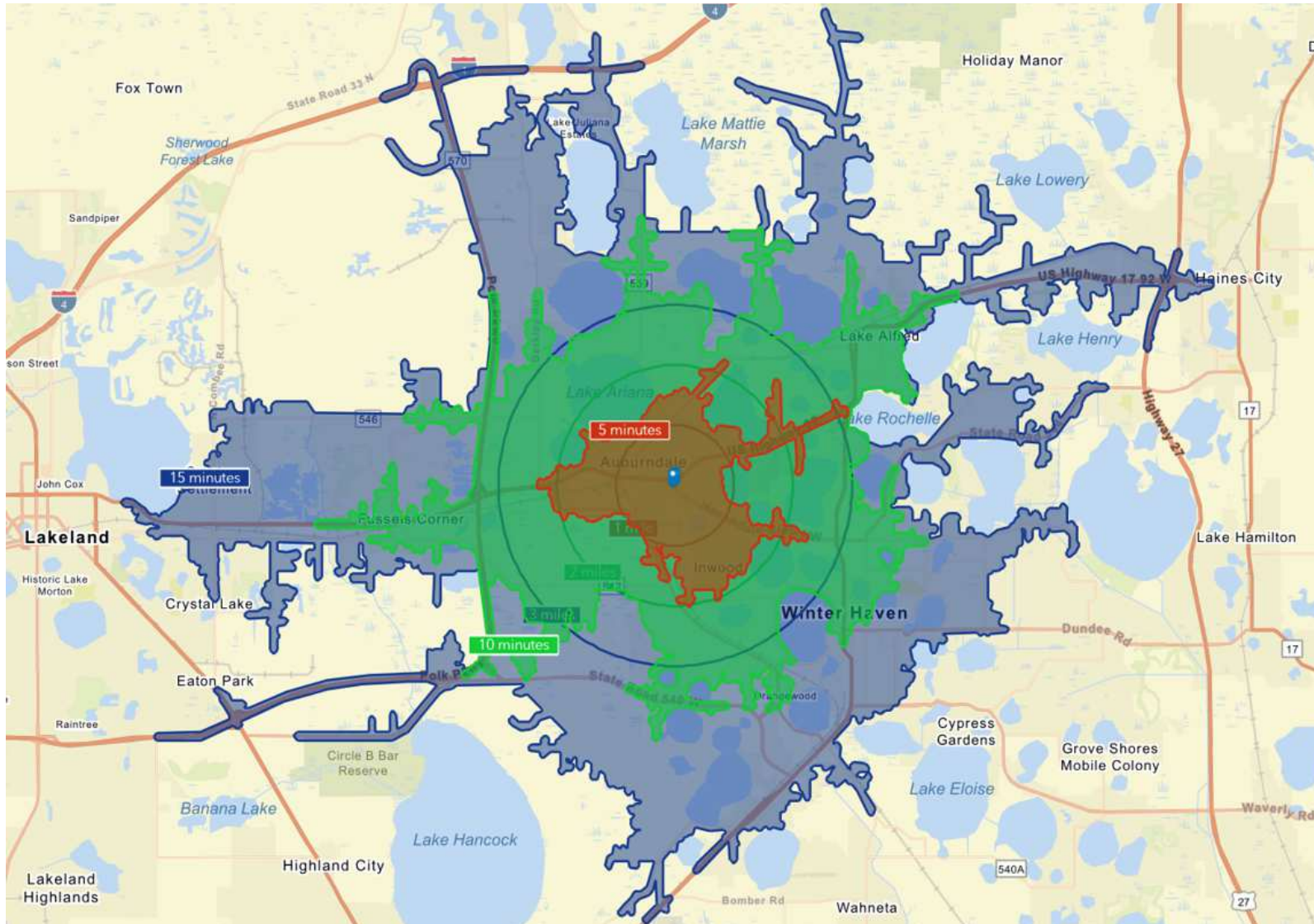
Age Group	1 Mile	2 Miles	3 Miles	5 Mins	10 Mins	15 Mins	33823 Zip	Auburndale	Polk County	FL	US
0 - 4	6.00%	5.80%	5.70%	5.90%	5.70%	5.60%	5.50%	5.70%	5.40%	4.70%	5.50%
5 - 9	6.20%	6.10%	6.10%	6.20%	6.10%	6.00%	6.10%	6.40%	5.70%	5.10%	5.80%
10 - 14	6.20%	6.50%	6.40%	6.40%	6.30%	6.10%	6.50%	6.70%	6.20%	5.40%	6.00%
15 - 19	7.00%	6.60%	6.30%	6.60%	6.20%	6.00%	6.20%	6.60%	6.30%	5.80%	6.40%
20 - 24	5.90%	5.90%	5.90%	6.00%	5.80%	5.70%	5.70%	5.70%	6.30%	6.10%	6.80%
25 - 34	13.10%	12.40%	12.30%	12.70%	12.20%	11.90%	11.50%	11.80%	12.40%	12.30%	13.50%
35 - 44	12.60%	12.40%	12.20%	12.50%	12.10%	12.00%	12.50%	12.60%	12.40%	12.50%	13.30%
45 - 54	11.90%	12.00%	12.10%	11.80%	11.80%	11.40%	11.90%	12.40%	11.60%	12.10%	12.10%
55 - 64	13.30%	13.60%	13.20%	13.40%	13.00%	12.90%	13.50%	13.30%	12.30%	13.30%	12.30%
65 - 74	10.70%	11.00%	11.30%	11.00%	11.60%	12.20%	11.80%	10.80%	11.90%	12.30%	10.40%
75 - 84	5.40%	5.90%	6.50%	5.70%	6.90%	7.60%	6.90%	6.20%	7.40%	7.70%	5.70%
85+	1.70%	1.80%	2.20%	1.90%	2.30%	2.40%	1.90%	1.80%	2.20%	2.70%	2.00%

## Race and Ethnicity

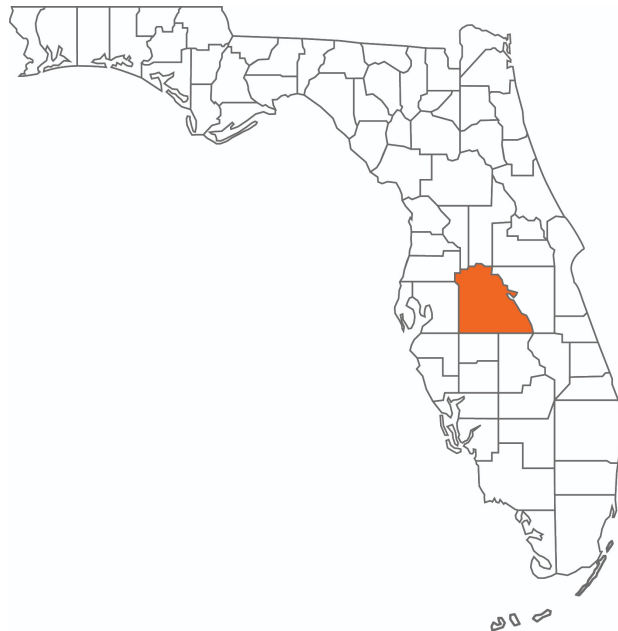
Race/Ethnicity	1 Mile	2 Miles	3 Miles	5 Mins	10 Mins	15 Mins	33823 Zip	Auburndale	Polk County	FL	US
White Alone	53.90%	57.30%	60.10%	55.60%	57.20%	58.10%	68.20%	67.30%	57.00%	56.50%	60.30%
Black Alone	19.90%	19.10%	17.70%	20.20%	20.70%	18.90%	9.90%	10.80%	15.00%	15.00%	12.50%
American Indian Alone	1.10%	0.90%	0.70%	0.90%	0.70%	0.60%	0.70%	0.70%	0.60%	0.50%	1.10%
Asian Alone	0.80%	1.30%	1.50%	1.00%	1.50%	1.60%	1.40%	1.70%	2.00%	3.20%	6.40%
Pacific Islander Alone	0.10%	0.10%	0.00%	0.10%	0.10%	0.10%	0.00%	0.00%	0.10%	0.10%	0.20%
Some Other Race Alone	10.80%	9.10%	8.10%	9.60%	8.00%	8.70%	7.60%	7.10%	10.70%	7.60%	8.80%
Two or More Races	13.40%	12.20%	11.90%	12.60%	11.80%	12.00%	12.10%	12.50%	14.60%	17.20%	10.70%
Hispanic Origin (Any Race)	29.00%	25.40%	23.20%	26.80%	23.10%	24.20%	22.00%	21.10%	29.80%	27.60%	19.60%



# Drive Time Map







## POLK COUNTY FLORIDA

Founded	1861	Density	386.5 [2019]
County Seat	Bartow	Population	775,084 [2023]
Area	1,875 sq. mi.	Website	polk-county.net

In Florida, Polk County is a leading contributor to the state's economy and politics. Concerning the local economy, industries like citrus, cattle, agriculture, and phosphate have all played extremely vital roles in Polk County. An increase in tourist revenue has also significantly contributed to the county's economic growth in recent years. As the heart of Central Florida, Polk County's location between the Tampa and Orlando Metropolitan Areas has aided in the development and growth of the area. Residents and visitors alike are drawn to the unique character of the county's numerous heritage sites, cultural venues, stunning natural landscapes, and plentiful outdoor activities.



# Additional Photos







**GARY RALSTON, CCIM, SIOR, CRE, CPM, CRRP, FRICS**

Managing Director/ Senior Advisor

[gary.ralston@svn.com](mailto:gary.ralston@svn.com)

Direct: **877.518.5263 x400** | Cell: **863.738.2246**

## PROFESSIONAL BACKGROUND

Gary M. Ralston, CCIM, SIOR, SRS, CPM, CRE, CLS, CDP, CRX, CRRP, FRICS is a Partner and Senior Advisor of SVN Saunders Ralston Dantzler Real Estate in Lakeland, FL – the premier commercial services provider in Central Florida.

Gary is a recognized subject matter expert on retail and commercial properties, a successful real estate developer, investor, and group investment sponsor.

From the early 1990s through 2004, Gary was the president and member of the board of directors at Commercial Net Lease Realty, Inc. [NYSE:NNN] - the industry leader in single-tenant, net-leased, corporate real estate. During that time, he guided the company's growth from less than \$15 million in real estate assets to over \$1.5 billion.

Gary holds many designations including the Certified Commercial Investment Member [CCIM], Society of Industrial and Office Realtors [SIOR], Specialist in Real Estate Securities [SRS], Certified Property Manager [CPM], Counselor of Real Estate [CRE], Certified Leasing Specialist [CLS], Certified Development, Design, and Construction Professional [CDP], Certified Retail Property Executive [CRX], Certified Retail Real Estate Professional [CRRP] and Fellow of the Royal Institute of Chartered Surveyors [FRICS]. He is also a Florida licensed real estate broker and certified building contractor.

Gary is a senior instructor for the CCIM Institute and a member of the board of directors of CCIM Technology. He is also a member of the Urban Land Institute [ULI], the International Council of Shopping Centers [ICSC], and the Commercial Real Estate Development Association [NAIOP].

Gary holds a Master's in Real Estate and Construction Management from the University of Denver. He is also an adjunct faculty member at Florida Southern College and the University of Florida. Gary was inducted as a Hoyt Fellow (<http://hoytgroup.org/hoyt-fellows/>) in 2001. Gary is a member of the Business Panel of the Federal Reserve Bank of Atlanta.

Gary is recognized as the most accredited commercial real estate practicing professional in the nation.





## DAVID LAPHAM

Associate Advisor

david.lapham@svn.com

Direct: 877.518.5263 x491 | Cell: 517.990.4907

### PROFESSIONAL BACKGROUND

David Lapham is an Associate Advisor at SVN | Saunders Ralston Dantzler Real Estate in Lakeland, Florida.

With a focus on Florida's sod industry, David brings a fresh and innovative approach to the profession. Originally from Michigan, David relocated to Florida in 2008 and began an impactful journey in land management and technology.

At the age of 17, David enlisted in the Army, an experience that has profoundly shaped his work ethic and leadership style. The military instilled in him a strong sense of discipline and adaptability, traits he later applied to his academic and professional pursuits.

David's educational journey led him to Southeastern University, where he earned a degree in Communications. This education, combined with his military experience, has been instrumental in developing his exceptional communication skills, which are essential for relationship-building within the real estate industry.

However, David truly shines at the intersection of technology and agriculture. With a background in software engineering, he has been able to effectively apply technological solutions within the sod industry. Through these advancements, David streamlined operations and brought a new level of efficiency and insight into sod management practices.

David's contributions within the sod industry are not just enhancing current practices but are also paving the way for future advancements. As an advisor at SVN, David will continue making waves within Florida's land and commercial real estate industry.





## TRACE LINDER

Associate Advisor

trace.linder@svn.com

Direct: 877.518.5263 x463 | Cell: 863.287.3281

FL #SL3562516

## PROFESSIONAL BACKGROUND

Trace Linder is an Associate Advisor at SVN | Saunders Ralston Dantzler Real Estate in Lakeland, Florida.

Trace is a licensed real estate sales associate based in Tampa, FL. As a fourth-generation Floridian raised in the Lakeland area, Trace has strong ties to the heart of Florida's cattle and citrus country. He is an avid outdoorsman with a passion for wildlife, conservation, and most importantly the land.

Trace earned his Bachelor of Science degree from the University of Florida's Agricultural Operations Management program before embarking on a twelve-year career in construction equipment sales for one of the leading Caterpillar machinery dealerships in the United States. His sales and management experience later led him to become the North American General Manager for an international construction equipment manufacturer. Throughout his career in sales and customer relations, Trace has always prioritized the needs of his clients.

In addition to his professional accomplishments, Trace is a Caterpillar Six Sigma Black Belt and an active member of several organizations dedicated to wildlife conservation, including Ducks Unlimited, The National Wild Turkey Federation, and Captains for Clean Water. He is also the Chairman of Conservation Florida's Central Florida Advisory Board.

Trace Specializes in:

- Recreational & Hunting Land
- Ranch & Agricultural Land
- Commercial & Industrial





**SID BHATT, CCIM, SIOR**

Senior Advisor

sid.bhatt@svn.com

Direct: 877.518.5263 x484 | Cell: 704.930.8179

## PROFESSIONAL BACKGROUND

Sid Bhatt, CCIM, SIOR is a Senior Advisor at SVN | Saunders Ralston Dantzler Real Estate operating out of Tampa, Florida.

An expert in his field, Sid primarily focuses on managing investment sales, leasing, and property management in the Tampa Bay area. He specializes in critical industrial real estate assets with a focus on 3rd party logistics, cold storage, life science, and sale leasebacks. With over 15 years of commercial real estate experience, Sid has achieved a career sales volume close to \$100 million, fostering client relationships with Lightstone, EB5 United, L&M Development, Switzenbaum & Associates, Crossharbor Capital, CanAM, Big River Steel, Strand Capital, Dollar General & CleanAF Operations, Inc.

In 2008, Sid began his commercial brokerage career in the Carolinas with Coldwell Banker and later with NNNet Advisors, Marcus & Millichap, and eventually the SVN Commercial Advisory Group. Now, Sid has seamlessly transitioned his expertise and deep market insights by joining SVN | Saunders Ralston Dantzler Real Estate.

Since the start, Sid has proven to be an effective deal manager who has strategically penetrated key markets in single & multi-tenant assets through his relationships with developers, private client capital, and overseas investors. He has a strong history of working in investment banking with private placement transactions for accredited investors in structured real estate bonds.

Prior to becoming a commercial broker, Sid worked for over 20 years in sales and marketing management with Hewlett Packard/Agilent Technologies. He was instrumental in implementing several corporate real estate projects, namely the Centers of Excellence in CA, DE, and across the US and Canada. Sid also holds an MBA from Fordham University, NY, and a Certificate of Professional Development from the University of Pennsylvania – The Wharton School.

Sid was awarded the coveted CCIM [Certified Commercial Investment Member] designation in 2010 and the SIOR [Society of Industrial & Office Realtors] in 2022. He is involved in the following charities : DNS Relief Fund, Samaritan's Purse and Gideons International.





# ONE OF AMERICA'S BEST BROKERAGES



One of America's  
Best Brokerages



APEX 2022 Top  
National Producer



Most Influential  
Business Leaders



Largest Commercial  
Real Estate Brokers  
in Tampa Bay



Ranked 210 on Inc.  
5000 Regional List



# Disclaimer



The material contained in this Offering Memorandum is furnished solely for the purpose of considering the purchase of the property within and is not to be used for any other purpose. This information should not, under any circumstances, be photocopied or disclosed to any third party without the written consent of the SVN® Advisor or Property Owner, or used for any purpose whatsoever other than to evaluate the possible purchase of the Property.

The only party authorized to represent the Owner in connection with the sale of the Property is the SVN Advisor listed in this proposal, and no other person is authorized by the Owner to provide any information or to make any representations other than contained in this Offering Memorandum. If the person receiving these materials does not choose to pursue a purchase of the Property, this Offering Memorandum must be returned to the SVN Advisor.

Neither the SVN Advisor nor the Owner make any representation or warranty, express or implied, as to the accuracy or completeness of the information contained herein, and nothing contained herein is or shall be relied upon as a promise or representation as to the future representation of the Property. This Offering Memorandum may include certain statements and estimates with respect to the Property. These Assumptions may or may not be proven to be correct, and there can be no assurance that such estimates will be achieved. Further, the SVN Advisor and the Owner disclaim any and all liability for representations or warranties, expressed or implied, contained in or omitted from this Offering Memorandum, or any other written or oral communication transmitted or made available to the recipient. The recipient shall be entitled to rely solely on those representations and warranties that may be made to it in any final, fully executed and delivered Real Estate Purchase Agreement between it and Owner.

The information contained herein is subject to change without notice and the recipient of these materials shall not look to Owner or the SVN Advisor nor any of their officers, employees, representatives, independent contractors or affiliates, for the accuracy or completeness thereof. Recipients of this Offering Brochure are advised and encouraged to conduct their own comprehensive review and analysis of the Property.

This Offering Memorandum is a solicitation of interest only and is not an offer to sell the Property. The Owner expressly reserves the right, at its sole discretion, to reject any or all expressions of interest to purchase the Property and expressly reserves the right, at its sole discretion, to terminate negotiations with any entity, for any reason, at any time with or without notice. The Owner shall have no legal commitment or obligation to any entity reviewing the Offering Memorandum or making an offer to purchase the Property unless and until the Owner executes and delivers a signed Real Estate Purchase Agreement on terms acceptable to Owner, in Owner's sole discretion. By submitting an offer, a prospective purchaser will be deemed to have acknowledged the foregoing and agreed to release the Owner and the SVN Advisor from any liability with respect thereto.

To the extent Owner or any agent of Owner corresponds with any prospective purchaser, any prospective purchaser should not rely on any such correspondence or statements as binding Owner. Only a fully executed Real Estate Purchase Agreement shall bind the property and each prospective purchaser proceeds at its own risk.





For more information visit [www.SVNsaunders.com](http://www.SVNsaunders.com)

**HEADQUARTERS**

1723 Bartow Rd  
Lakeland, FL 33801  
863.648.1528

**ORLANDO**

605 E Robinson Street, Suite 410  
Orlando, Florida 32801  
386.438.5896

**NORTH FLORIDA**

356 NW Lake City Avenue  
Lake City, Florida 32055  
352.364.0070

**GEORGIA**

203 E Monroe Street  
Thomasville, Georgia 31792  
229.299.8600

**ARKANSAS**

112 W Center St, Suite 501  
Fayetteville, Arkansas 72701  
479.582.4113

©2024 Saunders Ralston Dantzler Real Estate. All SVN® Offices Independently Owned and Operated SVN | Saunders Ralston Dantzler Real Estate is a full-service land and commercial real estate brokerage representing buyers, sellers, investors, institutions, and landowners since 1996. We are recognized nationally as an authority on all types of land, including agriculture, ranch, recreation, and residential development. Our commercial real estate services include property management, leasing and tenant representation, valuation, business brokerage, and advisory and counseling services for office, retail, industrial, and multifamily properties. Our firm also features an auction company, a forestry division, international partnerships, and extensive expertise in conservation easements. Located in Florida, Georgia, and Alabama, we provide proven leadership and collaborative expertise backed by the strength of the SVN® global platform.

