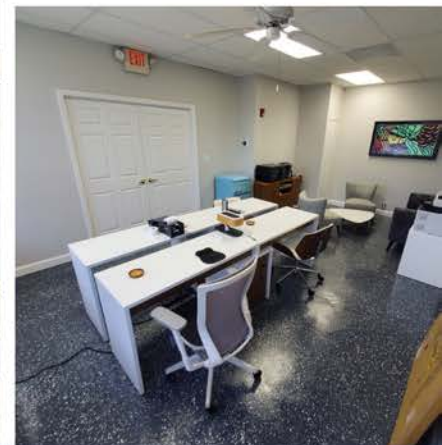


FOR LEASE

100% A/C CORNER UNIT | OFFICE / WAREHOUSE



**3786 NW 124th Ave, Unit 204
Coral Springs, FL 33065**

1,400 +/- SQFT



- 2-story office/warehouse
- Office: 200 +/- SQFT
- Warehouse: 1,000 +/- SQFT
- Mezzanine: 200 +/- SQFT
- 100% under A/C
- Impact glass windows on the 2nd floor, hurricane shutters on 1st floor
- Renovated in 2019
- Epoxy floors

Price Negotiable! Call or text 954-224-8773 for more information.



JOE PELAYO, CCIM, SIOR
 BROKER
 trec@joepelayo.com
954.224.8773



GEORGE PELAYO
 BROKER ASSOCIATE
 george@trecfl.com
954.482.1330



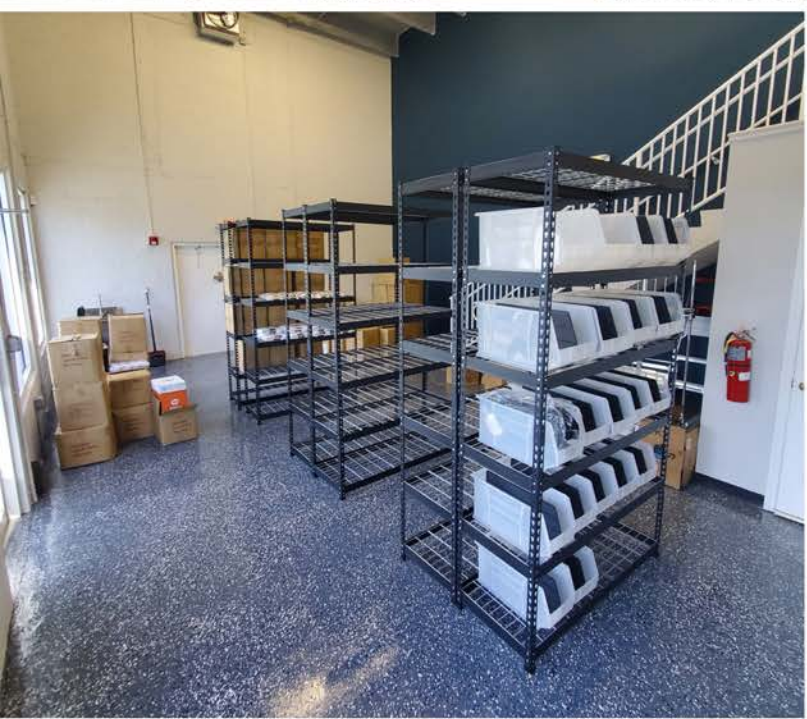
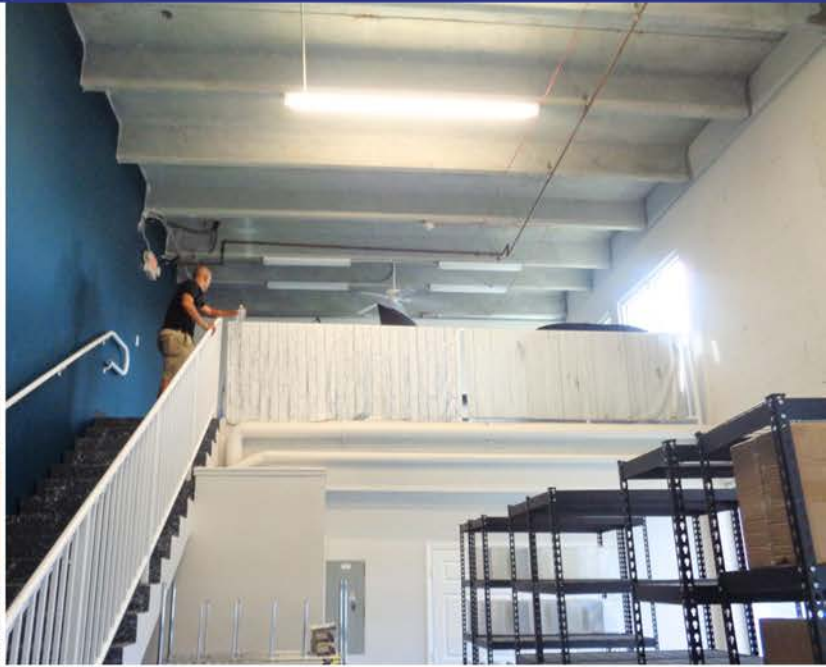
NOTICE: This information has been obtained from sources believed to be reliable but has not been verified. No warranty or representation, express or implied, is made as to the condition/legal adjustments of the property (or properties) referenced or as to the accuracy or completeness of the information contained, and same is submitted subject to errors, omissions, change of price, retail or other conditions, including but not limited to withdrawal without notice, and to any special listing conditions imposed by the property owner.

FOR LEASE

100% A/C CORNER UNIT | OFFICE / WAREHOUSE

The Horizon Center
3786 NW 124th Ave, Unit 204, Coral Springs, FL 33065

1,400 +/- SQFT



Price Negotiable! Call or text 954-224-8773 for more information.



JOE PELAYO, CCIM, SIOR
BROKER
trec@joepelayo.com
954.224.8773

TREC
Total Real Estate Consultants Inc.
www.trecfl.com

GEORGE PELAYO
BROKER ASSOCIATE
george@trecfl.com
954.482.1330



NOTICE: This information has been obtained from sources believed to be reliable but has not been verified. No warranty or representation, express or implied, is made as to the condition/legal adjustments of the property (or properties) referenced or as to the accuracy or completeness of the information contained, and same is submitted subject to errors, omissions, change of price, retail or other conditions, including but not limited to withdrawal without notice, and to any special listing conditions imposed by the property owner.