

▶ Client Relationship Driven
▶ Strong Community Involvement

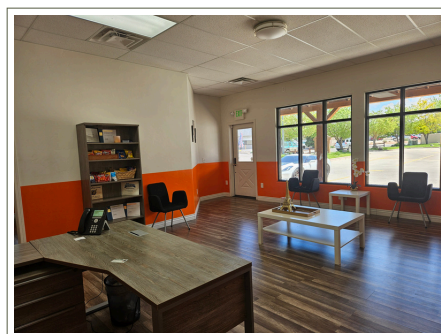
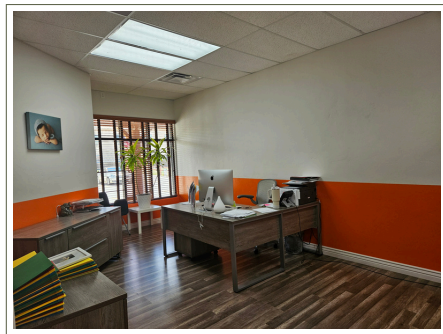
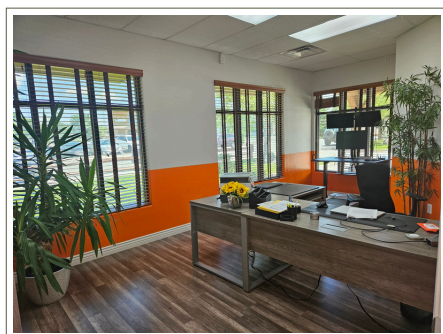
GRAND MESA
REAL ESTATE SERVICES
Commercial . Residential . Management

▶ Extensive Marketing Strategies
▶ Diverse Experience in Real Estate

MLS # 814410
& 20242453



2731 Commercial Way, Montrose | \$2,900/ MO



1,888 Square Feet



Double Unit Suite with a lot of natural light



Large Reception/ Waiting Room



5 Large Private Offices



2 Restrooms



Kitchen Area

Signage on the building, plenty of parking off street. Available first of August, 2024. Modified gross lease, tenant pays for their own utilities and internet. Call Broker for lease terms. Please do not disturb current tenants.



LUCINDA STANLEY, CCIM

lucinda@grandmesaCRE.com
970-201-2152



JOHN ANGELO, REALTOR

john@angeloadvisors.com
970-596-2492



537 MEEKER ST. DELTA, CO 81416
P.O BOX 735 DELTA, CO 81416



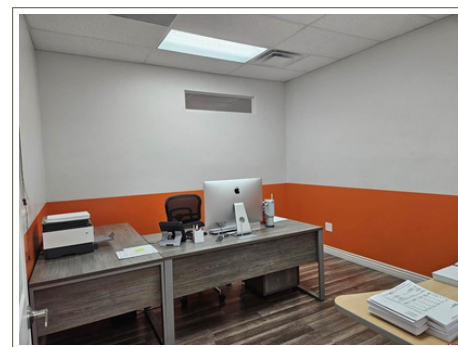
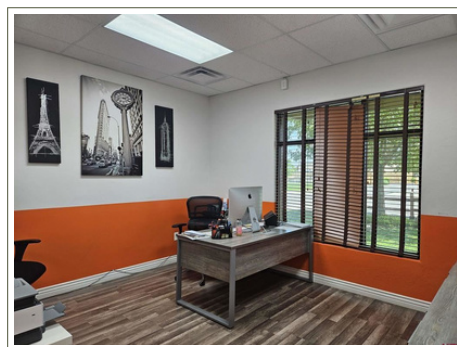
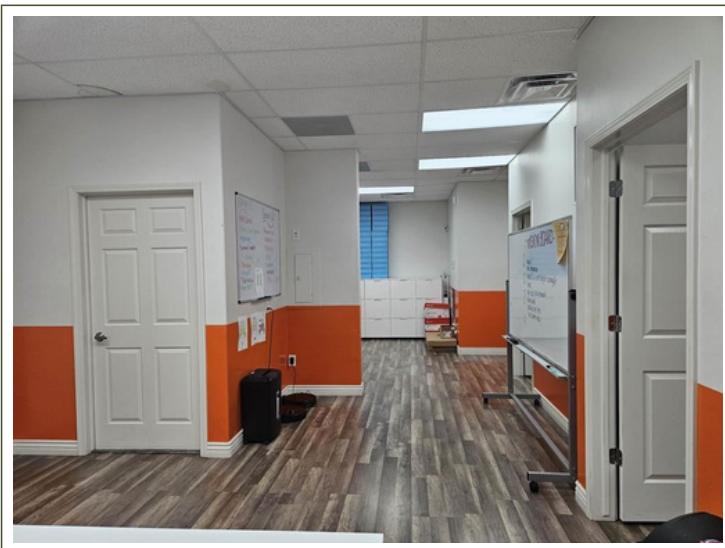
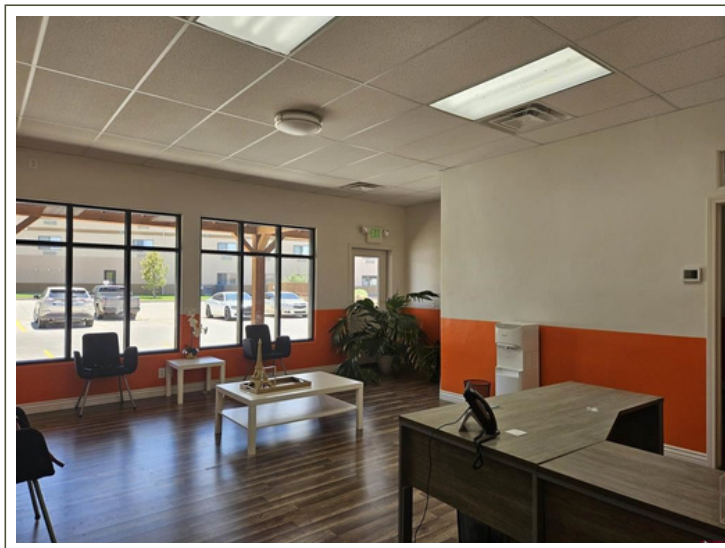
WWW.GRANDMESARES.COM

Information provided is deemed reliable but not guaranteed by the Brokers. It is advised to verify all information and/or obtain professional advice. Price and terms may change without notice.

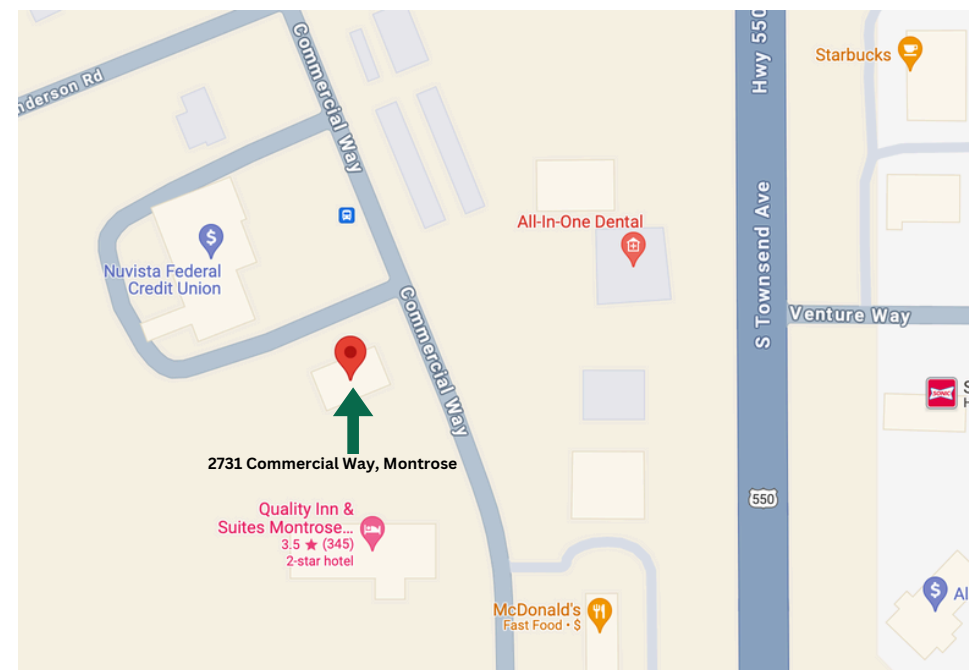
▶ Client Relationship Driven
 ▶ Strong Community Involvement

GRAND MESA
REAL ESTATE SERVICES
Commercial . Residential . Management

▶ Extensive Marketing Strategies
 ▶ Diverse Experience in Real Estate



2731 Commercial Way, Montrose | \$2,900/ MO



LUCINDA STANLEY, CCIM

lucinda@grandmesaCRE.com

970-201-2152



JOHN ANGELO, REALTOR

john@angeloadvisors.com

970-596-2492



537 MEEKER ST. DELTA, CO 81416
 P.O BOX 735 DELTA, CO 81416



WWW.GRANDMESARES.COM

Information provided is deemed reliable but not guaranteed by the Brokers. It is advised to verify all information and/or obtain professional advice. Price and terms may change without notice.