



CONTACT

Patty Burns, CCIM, ALC
478-746-9421 Office
478-951-5100 Cell
patty@fickling.com

Trip Wilhoit, CCIM, ALC
478-746-9421 Office
478-960-4080 Cell
trip@fickling.com



577 Mulberry St, Suite 1100
Macon, GA 31201
478.746.9421 Office
<https://commercial.fickling.com>

PROPERTY INFORMATION

BUILDING

Property Address: 111 Fieldstone Drive
Milledgeville, GA 31061

Building Size: ±100,000 SF

Available Office Suites: **1,285 SF** : Floor plan includes 3 offices, conference room, storage and 1 restroom.
2,300 SF : Floor plan includes 6 offices, conference room, reception area, and 2 restrooms.

Utilities: All Available

Parking: Paved and Ample Shared

SITE

Site Size: 3.17 AC

Parcel ID: M54 053

Zoning: Commercial

LEASE PRICE: CONTACT AGENT

Landlord will offer T.I. for long term lease

| Demographics 2024 | 1 Mile | 3 Miles | 5 Miles |
|-------------------|----------|----------|----------|
| Population | 2,838 | 16,765 | 27,335 |
| Avg HH Income | \$95,721 | \$86,792 | \$93,862 |
| Median Age | 33.3 | 30.1 | 34.3 |

CONTACT

Patty Burns, CCIM, ALC
478-746-9421 Office
478-951-5100 Cell
patty@fickling.com

Trip Wilhoit, CCIM, ALC
478-746-9421 Office
478-960-4080 Cell
trip@fickling.com



577 Mulberry St, Suite 1100
Macon, GA 31201
478.746.9421 Office
<https://commercial.fickling.com>

- The Columbia Professional Center is the largest private office complex in Milledgeville, Georgia. The Center offers ~100,000 SF of office space serving the needs of a growing Central Georgia regional community requiring medical, government and professional services.
- With a great tenant mix that includes Family Eye Care Associates, Atlanta Hearing Associates, and RHA Health Services. Neighbors include Lowe's, Hobby Lobby, Ollie's, Harbor Freight, Chick-fil-A, Zaxby's, Sonic, Freddy's Frozen Custard and Steakburgers, and the Milledgeville Mall.
- Convenient to Downtown, Atrium Navicent Hospital, Central Georgia Technical College, Milledgeville-Baldwin Industrial Park, and the retail corridor of Highway 441. Located 2 hours from Atlanta, Milledgeville fosters an active collegiate and recreational community
- Area should continue to grow in parallel to growth in the greater Atlanta, Macon areas as well as from the demand for secondary and retirement homes in this area
- City's 3 colleges (Georgia College and State University, Central Georgia Technical College and Georgia Military Institute) are core economic growth engines for the region



CONTACT

Patty Burns, CCIM, ALC
478-746-9421 Office
478-951-5100 Cell
patty@fickling.com

Trip Wilhoit, CCIM, ALC
478-746-9421 Office
478-960-4080 Cell
trip@fickling.com



577 Mulberry St, Suite 1100
Macon, GA 31201
478.746.9421 Office
<https://commercial.fickling.com>

Professional Office Space
Columbia Professional Center
111 Fieldstone Drive
Milledgeville, GA 31061



Summary

Area Info

Photos

Floor Plans

Aerial



CONTACT

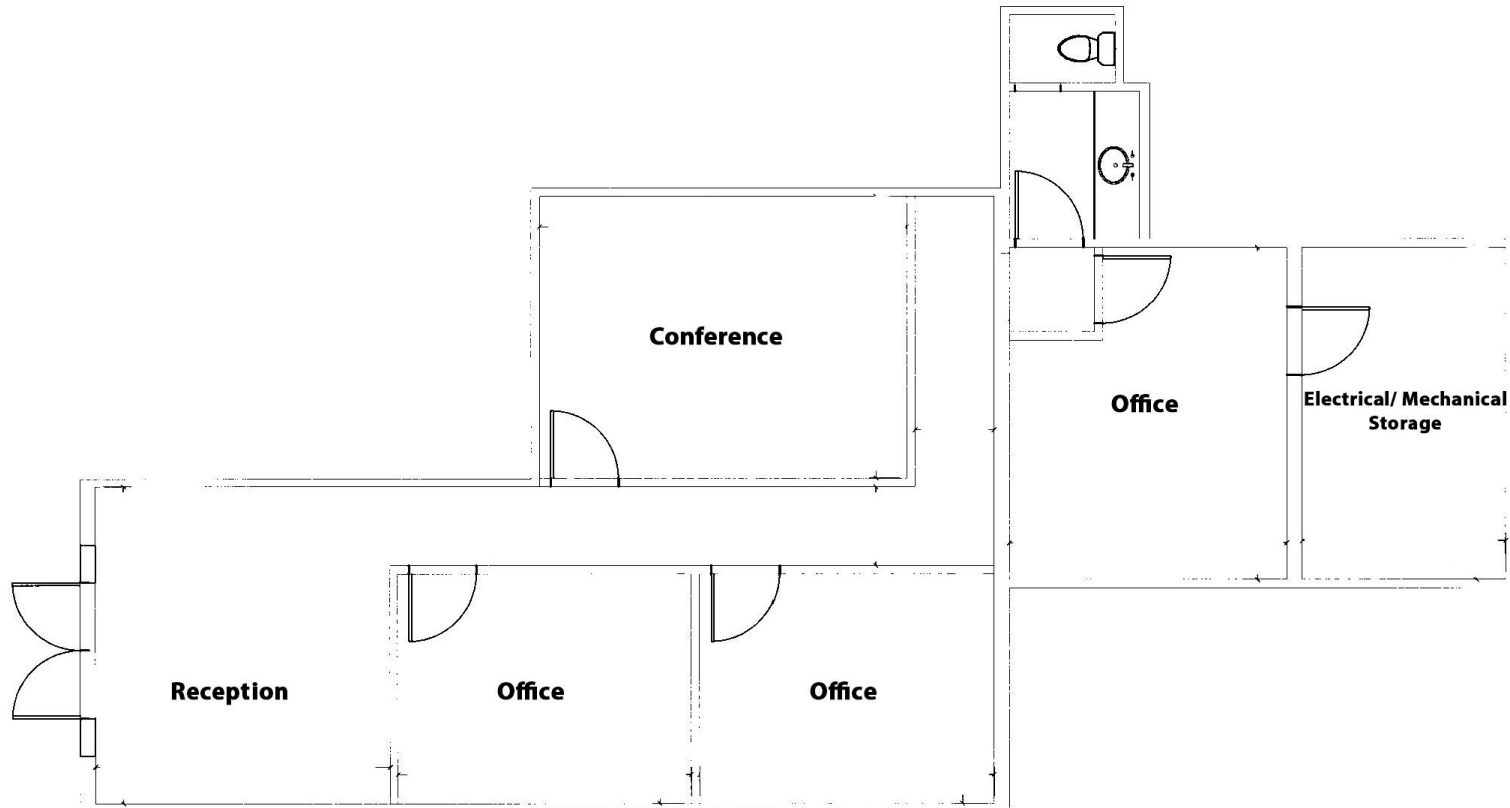
Patty Burns, CCIM, ALC
478-746-9421 Office
478-951-5100 Cell
patty@fickling.com

Trip Wilhoit, CCIM, ALC
478-746-9421 Office
478-960-4080 Cell
trip@fickling.com



577 Mulberry St, Suite 1100
Macon, GA 31201
478.746.9421 Office
<https://commercial.fickling.com>

1,285 SF Space



CONTACT

Patty Burns, CCIM, ALC
478-746-9421 Office
478-951-5100 Cell
patty@fickling.com

Trip Wilhoit, CCIM, ALC
478-746-9421 Office
478-960-4080 Cell
trip@fickling.com

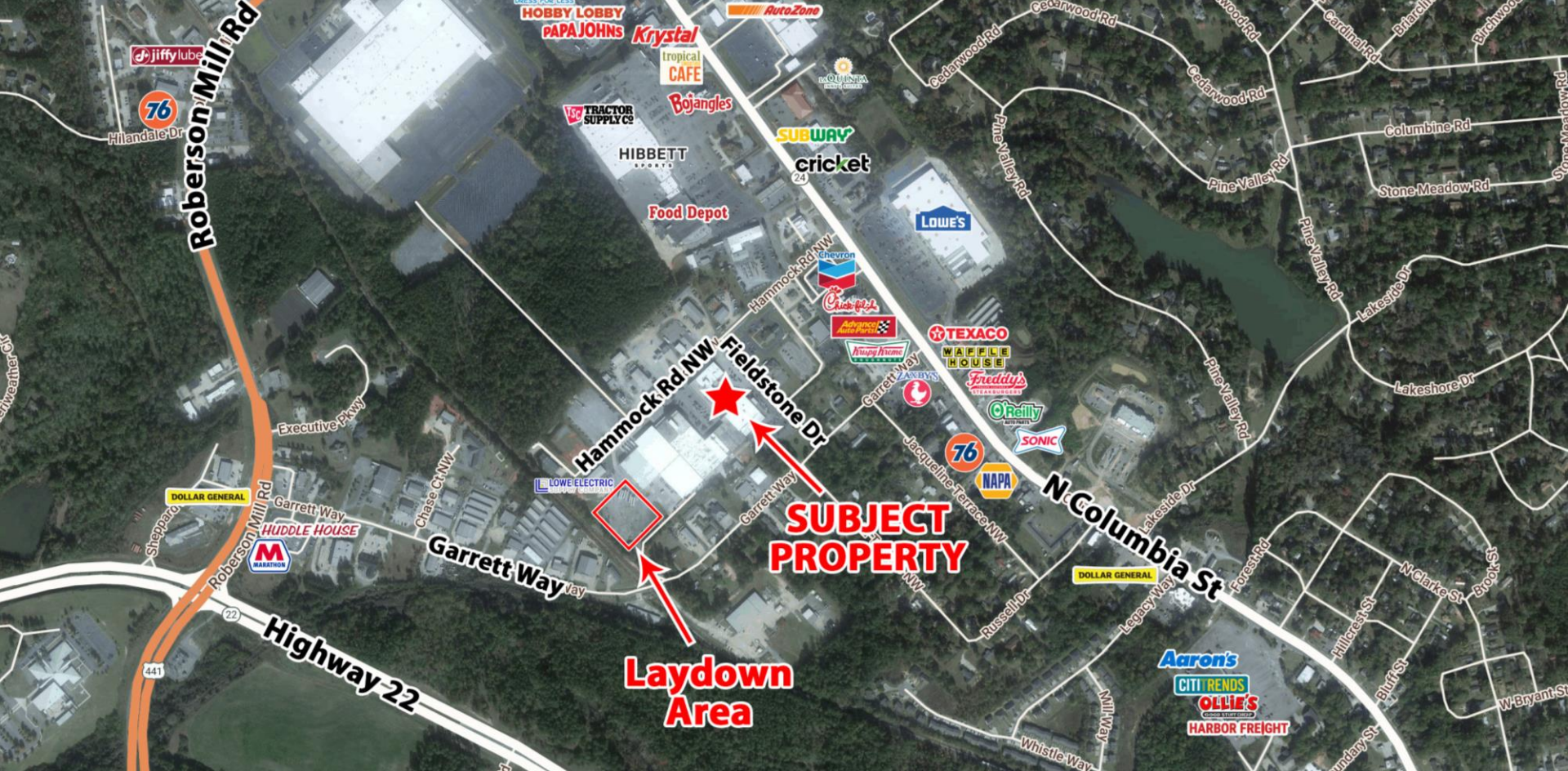


577 Mulberry St, Suite 1100
Macon, GA 31201
478.746.9421 Office
<https://commercial.fickling.com>

Professional Office Space
Columbia Professional Center
111 Fieldstone Drive
Milledgeville, GA 31061



- Summary
- Area Info
- Photos
- Floor Plans
- Aerial



CONTACT

Patty Burns, CCIM, ALC
478-746-9421 Office
478-951-5100 Cell
patty@fickling.com

Trip Wilhoit, CCIM, ALC
478-746-9421 Office
478-960-4080 Cell
trip@fickling.com



577 Mulberry St, Suite 1100
Macon, GA 31201
478.746.9421 Office
<https://commercial.fickling.com>

This information is from resources deemed to be reliable and is subject to change without notice. No warranties or guarantees for accuracy are made by Fickling and Company.