

# FOR LEASE

## 44,414 SF DOCK-HIGH INDUSTRIAL SPACE

351 LEONARD BOULEVARD N, LEHIGH ACRES, FL 33971

Currently the Most Economical Dock-High Loading Space in All of Charlotte, Lee, & Collier Counties!

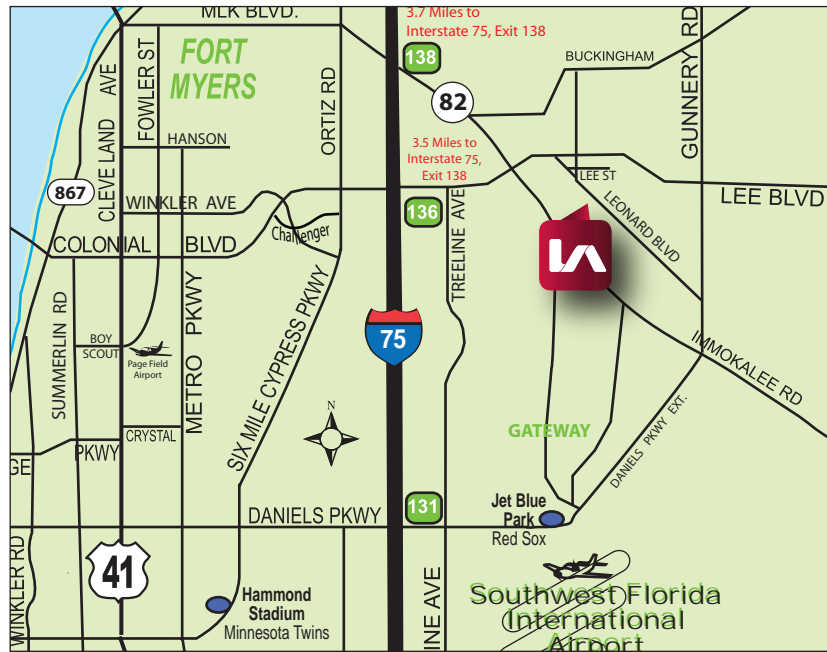
Click to View Property Video



- **AVAILABLE:** 44,414 SF
- **LEASE RATE:** \$9.00 / SF NNN
- **CAM:** \$2.49 / SF

### PROPERTY FEATURES

- 2,944 SF Main Office Area
- 18' - 23' Clear Height
- Sixteen (16) Dock-High Doors
- One (1) Drive-In Ramp Door
- Thirty-Nine (39) Parking Spaces
- Air Conditioned Warehouse has LED
- Lighting, Office Space, & Dedicated Break Room
- Secure Fenced Storage Area / Truck Court
- Zoned IL ([click here for uses](#))



Please Contact:  
**The Industrial Team**

**Derek Bornhorst, CCIM, SIOR**  
Principal

239.210.7607

dbornhorst@lee-associates.com

All information furnished regarding property for sale, rental or financing is from sources deemed reliable, but no warranty or representation is made to the accuracy thereof and same is subject to errors, omissions, change of price, or other conditions prior to sale, lease or financing or withdrawal without notice. No liability of any kind is to be imposed on the broker herein.

YOUR LOCAL MARKET EXPERT

11215 Metro Parkway, Suite 1 | Fort Myers, Florida 33966 | Lee-FL.com

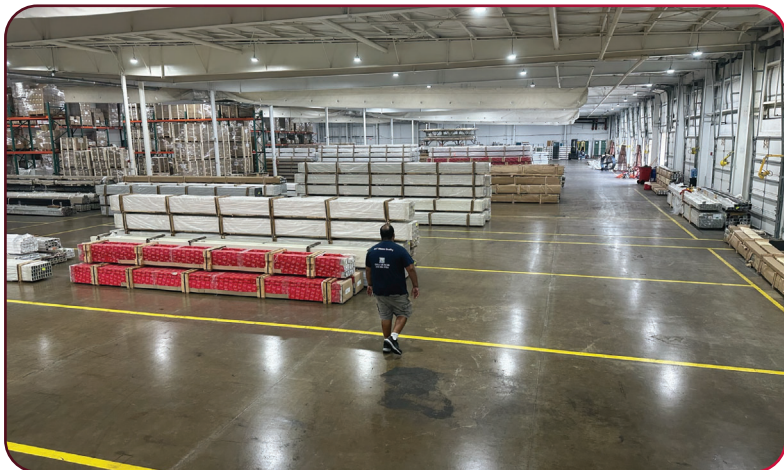




# FOR LEASE

## 44,414 SF DOCK-HIGH INDUSTRIAL SPACE

351 LEONARD BOULEVARD N, LEHIGH ACRES, FL 33971



YOUR LOCAL MARKET **EXPERT**

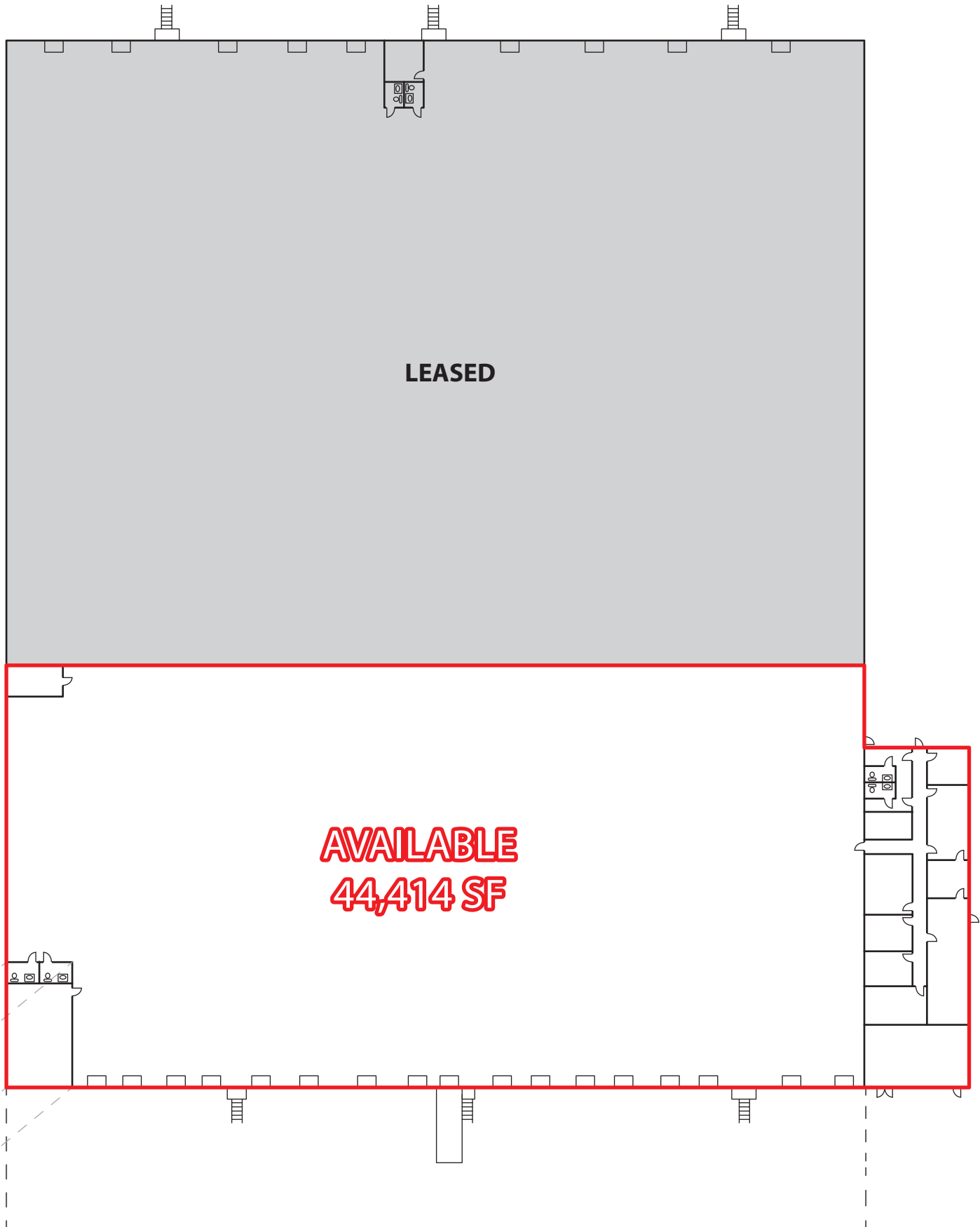
11215 Metro Parkway, Suite 1 | Fort Myers, Florida 33966 | Lee-FL.com



# FOR LEASE

44,414 SF DOCK-HIGH INDUSTRIAL SPACE

351 LEONARD BOULEVARD N, LEHIGH ACRES, FL 33971



YOUR LOCAL MARKET **EXPERT**

11215 Metro Parkway, Suite 1 | Fort Myers, Florida 33966 | Lee-FL.com