



# US HIGHWAY 27 RETAIL SPACE OPPORTUNITY

594 US HIGHWAY 27, LAKE PLACID, FL 33852

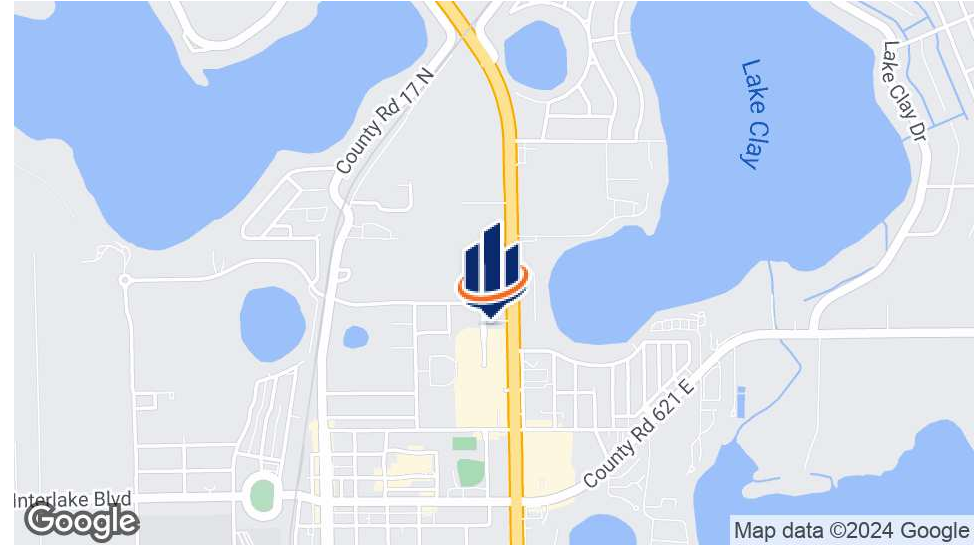
Gary Ralston, CCIM, SIOR, CRE, CPM, CRRP, FRICS  
C: 863.738.2246  
gary.ralston@svn.com

David Lapham  
C: 517.990.4907  
david.lapham@svn.com

Trace Linder  
C: 863.287.3281  
trace.linder@svn.com

Sid Bhatt, CCIM, SIOR  
C: 704.930.8179  
sid.bhatt@svn.com

# Property Summary



## OFFERING SUMMARY

<b>Lease Rate:</b>	<b>\$13.00 SF/yr (NNN)</b>
Building Size:	16,851 SF
Lot Size:	1.12 Acres
Year Built:	2003
Traffic Count:	18,700 ± Cars/Day
APN:	P31363017000000020

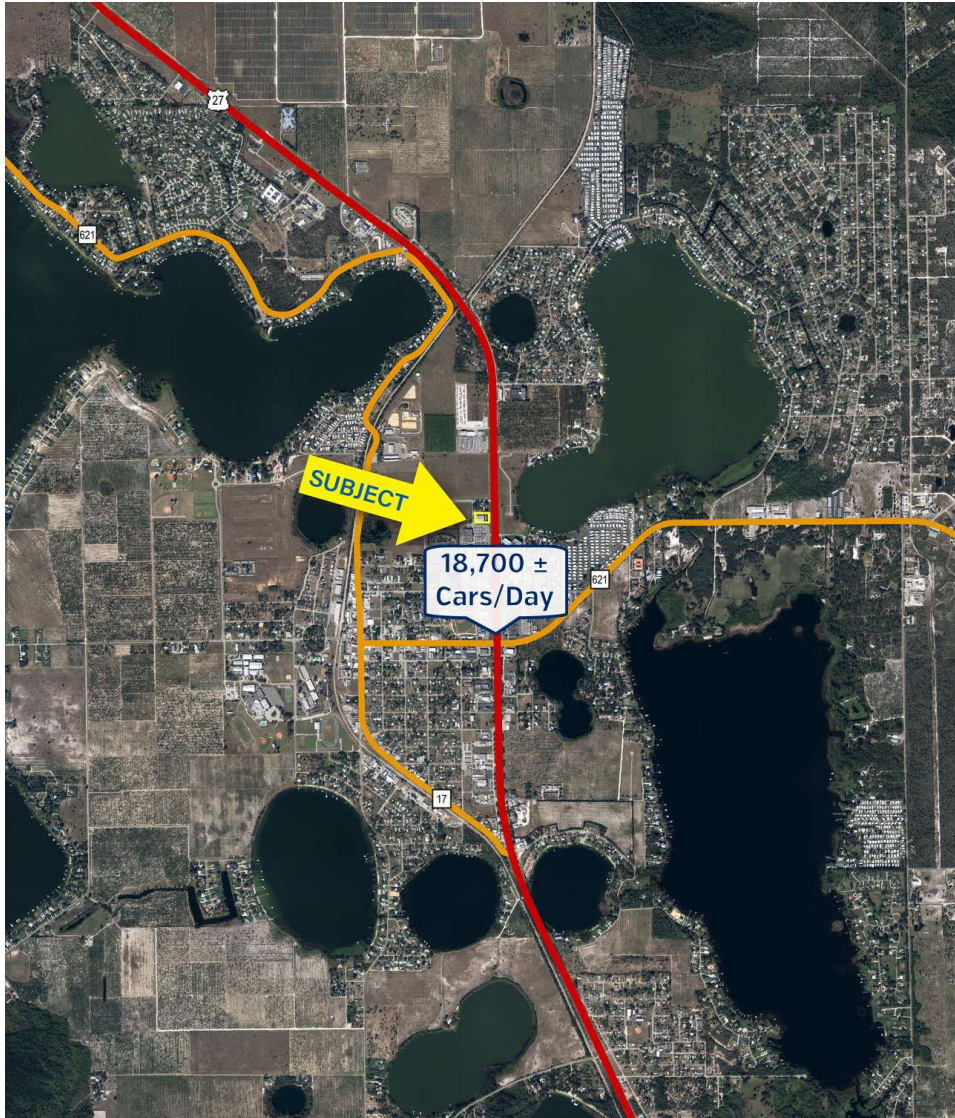
## PROPERTY OVERVIEW

Prime investment opportunity in Lake Placid, FL. This is a 16,851 SF free-standing building, which offers prime retail space in a highly desirable location. Boasting modern construction and spacious accommodations, this building is well-suited for a variety of retail uses. Its strategic positioning ensures a high level of visibility and foot traffic along U.S Hwy 27, making it a sought-after asset for retailers looking to establish or expand their presence in the area.

## PROPERTY HIGHLIGHTS

- 16,851 SF free-standing building
- Excellent frontage on U.S Hwy 27
- 18,700 ± Cars/Day

# Location Description

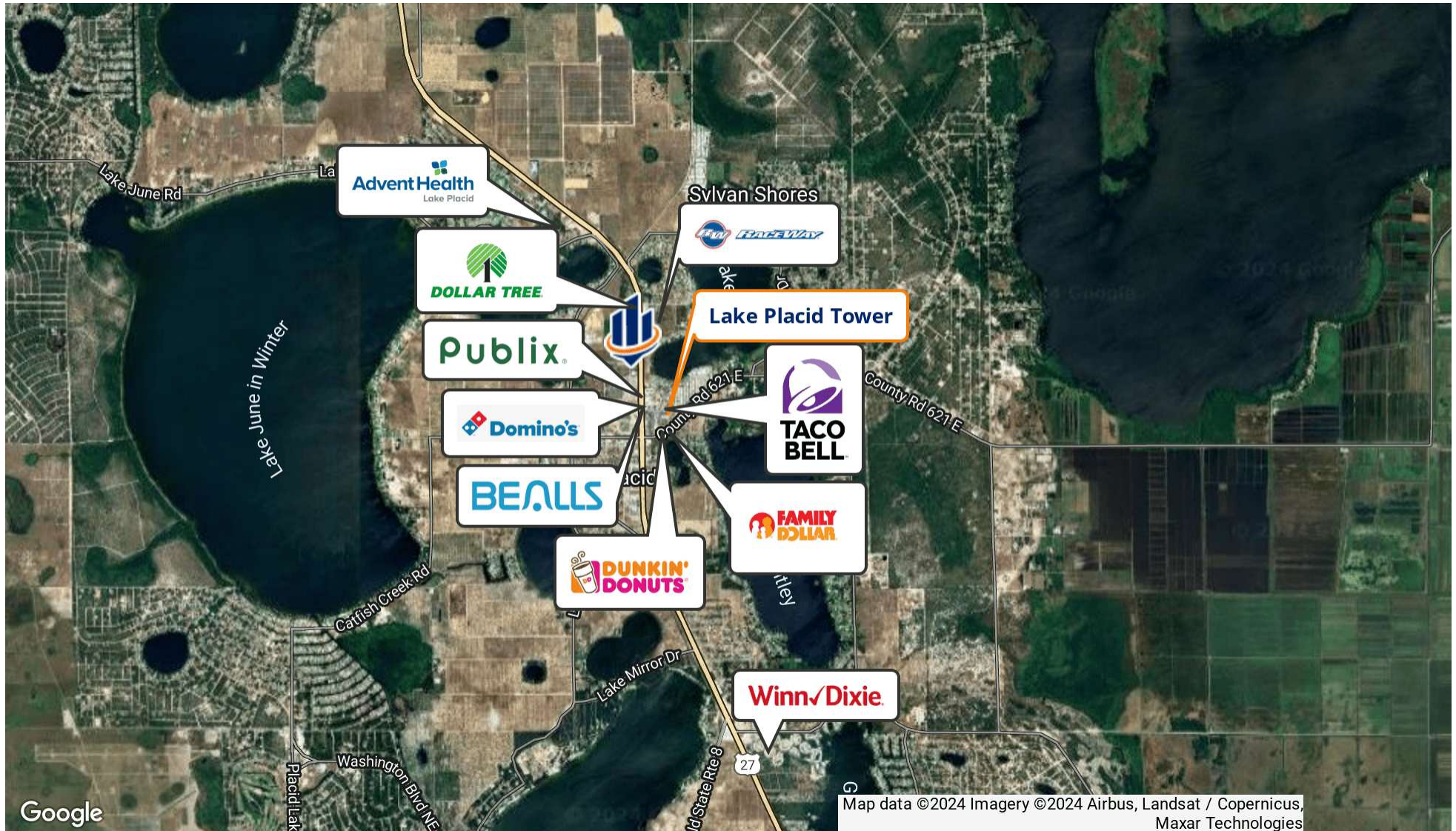


## LOCATION DESCRIPTION

This property is located right off of U.S Hwy 27 in Lake Placid, FL. With easy access to U.S Hwy 27, the location ensures seamless connectivity and transportation routes for professionals. Nearby points of interest, such as Lake June-in-Winter Scrub State Park and Lake Placid Tower, provide serene natural spaces for relaxation and inspiration.

The area also features an array of dining and retail options, which includes Publix, Bealls, Domino's, Burger King, Wawa, and many more.

# Market Area Map



# Neighborhood Map



Lake Placid  
Tower

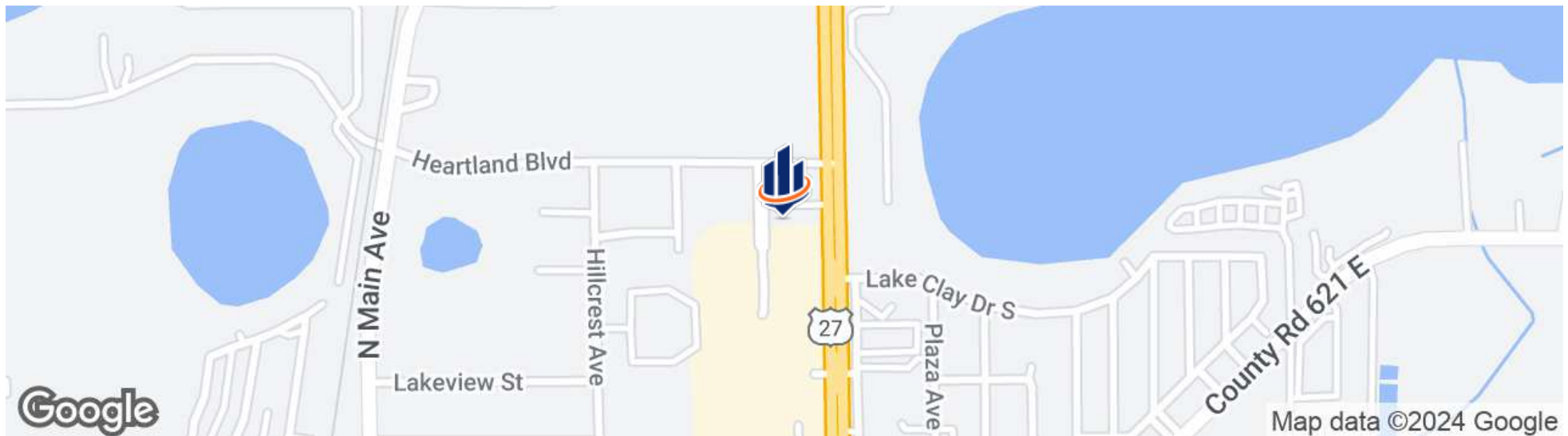


18,700 ±  
Cars/Day





# Regional & Location Map





# Benchmark Demographics



	1 Mile	3 Miles	5 Miles	5 Mins	10 Mins	15 Mins	Zip Code	Lake Placid	Highlands County	FL	US
Population	2,775	9,426	19,245	5,885	17,601	26,437	22,700	2,383	105,165	22,779,514	338,440,954
Households	1,214	4,187	8,744	2,592	8,090	11,804	10,052	1,016	46,672	9,084,882	130,716,571
Families	694	2,481	5,451	1,521	4,980	7,367	6,311	586	29,125	5,826,884	83,629,781
Average Household Size	2.26	2.21	2.18	2.21	2.15	2.21	2.23	2.33	2.22	2.45	2.53
Owner Occupied Housing Units	763	3,225	7,039	1,934	6,531	9,597	8,145	582	36,239	6,029,935	84,133,084
Renter Occupied Housing Units	451	962	1,705	658	1,559	2,207	1,907	434	10,433	3,054,947	46,583,487
Median Age	48.4	57.0	56.7	57.8	57.5	57.3	56.2	45.4	55.3	43.5	39.3
Housing Unit/Household Ratio	1.34	1.45	1.40	1.47	1.40	1.41	1.41	1.28	1.29	1.21	1.12
Adjusted Population	3,312	12,184	23,990	7,721	21,959	33,142	28,515	2,723	120,944	24,620,604	348,535,210
<b>Income</b>											
Median Household Income	\$50,476	\$58,076	\$57,181	\$56,572	\$57,213	\$58,359	\$56,965	\$47,176	\$56,165	\$74,715	\$79,068
Average Household Income	\$69,486	\$79,839	\$77,754	\$77,711	\$76,327	\$78,325	\$78,209	\$65,569	\$76,632	\$105,305	\$113,185
Per Capita Income	\$29,385	\$35,657	\$34,870	\$34,392	\$34,712	\$35,211	\$34,660	\$27,967	\$34,081	\$42,078	\$43,829
<b>Trends: 2024 - 2029 Annual Growth Rate</b>											
Population	-0.04%	-0.01%	0.49%	0.07%	0.44%	0.58%	0.60%	-0.08%	0.52%	0.93%	0.38%
Households	0.33%	0.40%	0.93%	0.47%	0.87%	0.99%	1.01%	0.31%	0.90%	1.15%	0.64%
Families	0.20%	0.30%	0.86%	0.37%	0.80%	0.92%	1.05%	-0.52%	0.85%	1.12%	0.56%
Owner HHs	1.35%	1.09%	1.56%	1.20%	1.48%	1.59%	1.63%	1.57%	1.62%	1.66%	0.97%
Median Household Income	4.27%	4.85%	4.68%	4.81%	4.49%	4.70%	4.85%	3.62%	3.33%	3.25%	2.95%

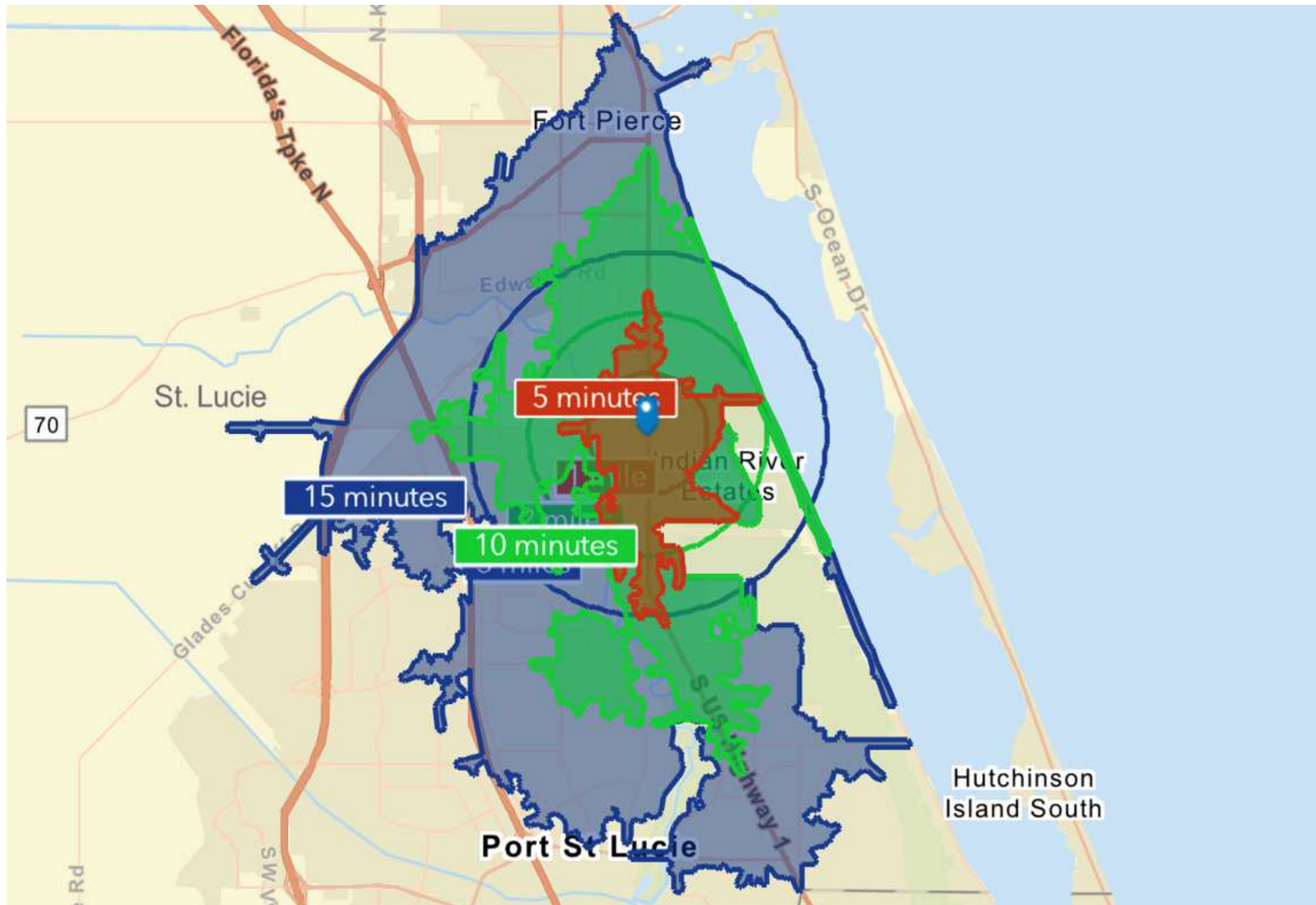
- Over 26,000 people with a median age of 57.3 within a 15-minute radius from the property.
- Median household income of over \$58,000 within a 3-mile radius from the property.

# Benchmark Demographics



	1 Mile	3 Miles	5 Miles	5 Mins	10 Mins	15 Mins	Zip Code	Lake Placid	Highlands County	FL	US
<b>Households by Income</b>											
<\$15,000	16.80%	12.20%	9.60%	13.90%	10.30%	9.70%	9.50%	19.60%	12.60%	8.40%	8.60%
\$15,000 - \$24,999	10.30%	9.50%	12.50%	8.60%	12.60%	11.90%	12.50%	10.10%	9.60%	6.60%	6.30%
\$25,000 - \$34,999	7.10%	7.40%	9.10%	7.30%	8.30%	8.80%	9.00%	8.20%	9.80%	7.40%	6.70%
\$35,000 - \$49,999	15.30%	14.30%	12.70%	14.80%	12.80%	12.60%	13.10%	14.20%	11.60%	11.00%	10.10%
\$50,000 - \$74,999	16.10%	16.30%	16.50%	15.70%	16.10%	16.60%	16.00%	17.20%	19.20%	16.90%	15.70%
\$75,000 - \$99,999	14.00%	15.00%	14.00%	15.10%	13.80%	13.10%	13.70%	10.60%	12.60%	13.60%	12.80%
\$100,000 - \$149,999	15.10%	17.10%	17.60%	16.40%	19.00%	19.40%	17.60%	15.70%	16.00%	17.20%	17.60%
\$150,000 - \$199,999	1.40%	3.10%	3.60%	3.60%	3.20%	3.80%	4.00%	1.30%	4.30%	8.60%	9.50%
\$200,000+	3.80%	5.20%	4.40%	4.60%	3.90%	4.20%	4.50%	3.10%	4.20%	10.40%	12.60%
<b>Population by Age</b>											
0 - 4	5.00%	4.00%	4.20%	3.90%	4.10%	4.00%	4.10%	5.20%	4.10%	4.70%	5.50%
5 - 9	4.90%	4.30%	4.40%	4.10%	4.30%	4.30%	4.40%	4.50%	4.40%	5.10%	5.80%
10 - 14	5.80%	4.60%	4.80%	4.70%	4.60%	4.50%	4.80%	6.30%	4.80%	5.40%	6.00%
15 - 19	5.50%	4.70%	4.90%	4.60%	4.80%	4.80%	4.90%	5.60%	5.00%	5.80%	6.40%
20 - 24	5.30%	4.30%	4.00%	4.20%	4.00%	4.10%	4.20%	5.50%	4.30%	6.10%	6.80%
25 - 34	10.30%	8.30%	8.20%	8.30%	8.10%	8.10%	8.50%	11.20%	8.60%	12.30%	13.50%
35 - 44	10.30%	8.90%	8.80%	8.60%	8.50%	8.60%	8.70%	11.20%	9.10%	12.50%	13.30%
45 - 54	9.10%	8.40%	8.80%	8.30%	8.50%	8.80%	8.90%	8.90%	9.30%	12.10%	12.10%
55 - 64	12.40%	13.30%	13.90%	12.80%	13.70%	14.00%	14.00%	12.30%	13.60%	13.30%	12.30%
65 - 74	15.40%	18.00%	18.50%	17.80%	18.60%	18.70%	18.40%	14.10%	17.70%	12.30%	10.40%
75 - 84	11.70%	15.50%	14.90%	16.20%	15.50%	15.30%	14.50%	10.50%	14.50%	7.70%	5.70%
85+	4.30%	5.60%	4.80%	6.40%	5.10%	4.90%	4.60%	4.50%	4.50%	2.70%	2.00%
<b>Race and Ethnicity</b>											
White Alone	61.90%	69.90%	72.00%	69.00%	72.30%	73.80%	71.90%	56.90%	69.00%	56.50%	60.30%
Black Alone	7.10%	8.80%	7.90%	7.90%	7.50%	6.90%	7.20%	8.60%	9.90%	15.00%	12.50%
American Indian Alone	0.80%	0.60%	0.70%	0.60%	0.70%	0.70%	0.70%	0.90%	0.60%	0.50%	1.10%
Asian Alone	1.00%	0.80%	0.80%	0.80%	0.80%	0.70%	0.70%	1.10%	1.70%	3.20%	6.40%
Pacific Islander Alone	0.00%	0.00%	0.00%	0.00%	0.00%	0.00%	0.00%	0.00%	0.10%	0.10%	0.20%
Some Other Race Alone	10.80%	6.80%	6.80%	7.60%	7.00%	6.80%	7.60%	12.10%	7.00%	7.60%	8.80%
Two or More Races	18.40%	13.10%	11.70%	14.00%	11.70%	11.10%	11.80%	20.50%	11.80%	17.20%	10.70%
Hispanic Origin (Any Race)	36.00%	24.60%	23.70%	26.60%	23.50%	22.30%	24.50%	41.30%	22.60%	27.60%	19.60%

# Drive Time Map





## HIGHLANDS COUNTY

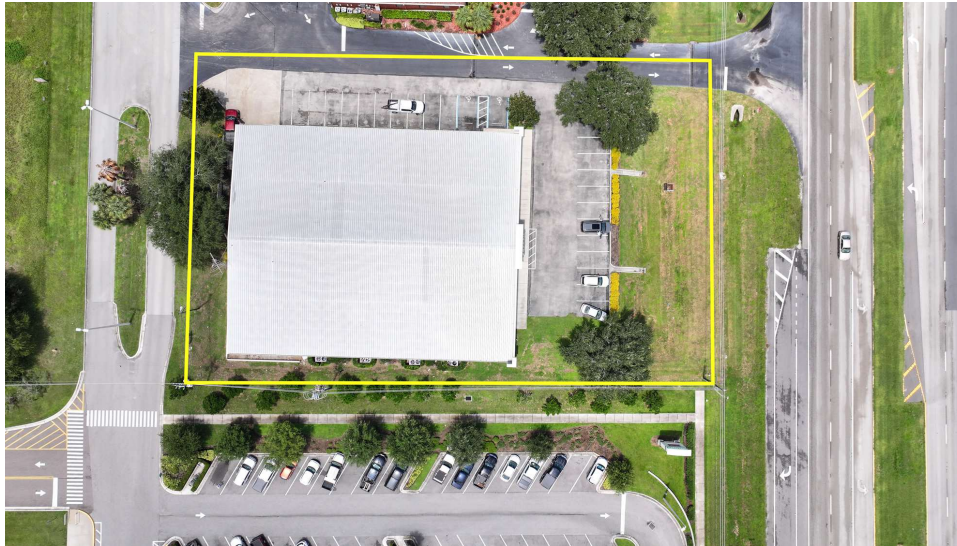
### FLORIDA

Founded	1921	Density	103.3 [2019]
County Seat	Sebring	Population	103,502 [2023]
Area	1,028 sq mi	Website	highlandsfl.gov

Highlands County comprises the Sebring-Avon Park Metropolitan Statistical Area, and its county seat is the city of Sebring. Equidistant to Tampa, Orlando, and South Florida, Highlands County is located within two hours of more than 86% of Florida's population. This location positions the county as a great bedroom community for workers who commute throughout the state. Highlands County is also near three interstates connecting to several commercial airports, an intermodal logistics center, and various deepwater ports. The county is about 1.5 hours from Orlando, Tampa, Fort Myers, and West Palm Beach.

According to DataUSA, the local county economy employs 34,300 people as of 2020. The largest industries are Health Care & Social Assistance [6,071 people], Retail Trade [5,595 people], and Construction [3,356 people]. The highest-paying industries are Information [\$82,176], Wholesale Trade [\$53,542], and Public Administration (\$41,000).

# Additional Photos





**GARY RALSTON, CCIM, SIOR, CRE, CPM, CRRP, FRICS**

Managing Director/ Senior Advisor

gary.ralston@svn.com

Direct: 877.518.5263 x400 | Cell: 863.738.2246

## PROFESSIONAL BACKGROUND

Gary M. Ralston, CCIM, SIOR, SRS, CPM, CRE, CLS, CDP, CRX, CRRP, FRICS is a Partner and Senior Advisor of SVN Saunders Ralston Dantzler Real Estate in Lakeland, FL – the premier commercial services provider in Central Florida.

Gary is a recognized subject matter expert on retail and commercial properties, a successful real estate developer, investor, and group investment sponsor.

From the early 1990s through 2004, Gary was the president and member of the board of directors at Commercial Net Lease Realty, Inc. [NYSE:NNN] - the industry leader in single-tenant, net-leased, corporate real estate. During that time, he guided the company's growth from less than \$15 million in real estate assets to over \$1.5 billion.

Gary holds many designations including the Certified Commercial Investment Member [CCIM], Society of Industrial and Office Realtors [SIOR], Specialist in Real Estate Securities [SRS], Certified Property Manager [CPM], Counselor of Real Estate [CRE], Certified Leasing Specialist [CLS], Certified Development, Design, and Construction Professional [CDP], Certified Retail Property Executive [CRX], Certified Retail Real Estate Professional [CRRP] and Fellow of the Royal Institute of Chartered Surveyors [FRICS]. He is also a Florida licensed real estate broker and certified building contractor.

Gary is a senior instructor for the CCIM Institute and a member of the board of directors of CCIM Technology. He is also a member of the Urban Land Institute [ULI], the International Council of Shopping Centers [ICSC], and the Commercial Real Estate Development Association [NAIOP].

Gary holds a Master's in Real Estate and Construction Management from the University of Denver. He is also an adjunct faculty member at Florida Southern College and the University of Florida. Gary was inducted as a Hoyt Fellow [<http://hoytgroup.org/hoyt-fellows/>] in 2001. Gary is a member of the Business Panel of the Federal Reserve Bank of Atlanta.

# Advisor Biography



## DAVID LAPHAM

Associate Advisor

david.lapham@svn.com

Direct: 877.518.5263 x491 | Cell: 517.990.4907

## PROFESSIONAL BACKGROUND

David Lapham is an Associate Advisor at SVN | Saunders Ralston Dantzler Real Estate in Lakeland, Florida.

With a focus on Florida's sod industry, David brings a fresh and innovative approach to the profession. Originally from Michigan, David relocated to Florida in 2008 and began an impactful journey in land management and technology.

At the age of 17, David enlisted in the Army, an experience that has profoundly shaped his work ethic and leadership style. The military instilled in him a strong sense of discipline and adaptability, traits he later applied to his academic and professional pursuits.

David's educational journey led him to Southeastern University, where he earned a degree in Communications. This education, combined with his military experience, has been instrumental in developing his exceptional communication skills, which are essential for relationship-building within the real estate industry.

However, David truly shines at the intersection of technology and agriculture. With a background in software engineering, he has been able to effectively apply technological solutions within the sod industry. Through these advancements, David streamlined operations and brought a new level of efficiency and insight into sod management practices.

David's contributions within the sod industry are not just enhancing current practices but are also paving the way for future advancements. As an advisor at SVN, David will continue making waves within Florida's land and commercial real estate industry.



## TRACE LINDER

Associate Advisor

[trace.linder@svn.com](mailto:trace.linder@svn.com)

Direct: **877.518.5263 x463** | Cell: **863.287.3281**

FL #SL3562516

## PROFESSIONAL BACKGROUND

Trace Linder is an Associate Advisor at SVN | Saunders Ralston Dantzler Real Estate in Lakeland, Florida.

Trace is a licensed real estate sales associate based in Tampa, FL. As a fourth-generation Floridian raised in the Lakeland area, Trace has strong ties to the heart of Florida's cattle and citrus country. He is an avid outdoorsman with a passion for wildlife, conservation, and most importantly the land.

Trace earned his Bachelor of Science degree from the University of Florida's Agricultural Operations Management program before embarking on a twelve-year career in construction equipment sales for one of the leading Caterpillar machinery dealerships in the United States. His sales and management experience later led him to become the North American General Manager for an international construction equipment manufacturer. Throughout his career in sales and customer relations, Trace has always prioritized the needs of his clients.

In addition to his professional accomplishments, Trace is a Caterpillar Six Sigma Black Belt and an active member of several organizations dedicated to wildlife conservation, including Ducks Unlimited, The National Wild Turkey Federation, and Captains for Clean Water. He is also the Chairman of Conservation Florida's Central Florida Advisory Board.

Trace Specializes in:

- Recreational & Hunting Land
- Ranch & Agricultural Land
- Commercial & Industrial





**SID BHATT, CCIM, SIOR**

Senior Advisor

sid.bhatt@svn.com

Direct: 877.518.5263 x484 | Cell: 704.930.8179

## PROFESSIONAL BACKGROUND

Sid Bhatt, CCIM, SIOR is a Senior Advisor at SVN | Saunders Ralston Dantzler Real Estate operating out of Tampa, Florida.

An expert in his field, Sid primarily focuses on managing investment sales, leasing, and property management in the Tampa Bay area. He specializes in critical industrial real estate assets with a focus on 3rd party logistics, cold storage, life science, and sale leasebacks. With over 15 years of commercial real estate experience, Sid has achieved a career sales volume close to \$100 million, fostering client relationships with Lightstone, EB5 United, L&M Development, Switzenbaum & Associates, Crossharbor Capital, CanAM, Big River Steel, Strand Capital, Dollar General & CleanAF Operations, Inc.

In 2008, Sid began his commercial brokerage career in the Carolinas with Coldwell Banker and later with NNNet Advisors, Marcus & Millichap, and eventually the SVN Commercial Advisory Group. Now, Sid has seamlessly transitioned his expertise and deep market insights by joining SVN | Saunders Ralston Dantzler Real Estate.

Since the start, Sid has proven to be an effective deal manager who has strategically penetrated key markets in single & multi-tenant assets through his relationships with developers, private client capital, and overseas investors. He has a strong history of working in investment banking with private placement transactions for accredited investors in structured real estate bonds.

Prior to becoming a commercial broker, Sid worked for over 20 years in sales and marketing management with Hewlett Packard/Agilent Technologies. He was instrumental in implementing several corporate real estate projects, namely the Centers of Excellence in CA, DE, and across the US and Canada. Sid also holds an MBA from Fordham University, NY, and a Certificate of Professional Development from the University of Pennsylvania – The Wharton School.

Sid was awarded the coveted CCIM [Certified Commercial Investment Member] designation in 2010 and the SIOR [Society of Industrial & Office Realtors] in 2022. He is involved in the following charities : DNS Relief Fund, Samaritan's Purse and Gideons International.



# ONE OF AMERICA'S BEST BROKERAGES



One of America's  
Best Brokerages



APEX 2022 Top  
National Producer



Most Influential  
Business Leaders



Largest Commercial  
Real Estate Brokers  
in Tampa Bay



Ranked 210 on Inc.  
5000 Regional List

# Disclaimer



The material contained in this Offering Memorandum is furnished solely for the purpose of considering the purchase of the property within and is not to be used for any other purpose. This information should not, under any circumstances, be photocopied or disclosed to any third party without the written consent of the SVN® Advisor or Property Owner, or used for any purpose whatsoever other than to evaluate the possible purchase of the Property.

The only party authorized to represent the Owner in connection with the sale of the Property is the SVN Advisor listed in this proposal, and no other person is authorized by the Owner to provide any information or to make any representations other than contained in this Offering Memorandum. If the person receiving these materials does not choose to pursue a purchase of the Property, this Offering Memorandum must be returned to the SVN Advisor.

Neither the SVN Advisor nor the Owner make any representation or warranty, express or implied, as to the accuracy or completeness of the information contained herein, and nothing contained herein is or shall be relied upon as a promise or representation as to the future representation of the Property. This Offering Memorandum may include certain statements and estimates with respect to the Property. These Assumptions may or may not be proven to be correct, and there can be no assurance that such estimates will be achieved. Further, the SVN Advisor and the Owner disclaim any and all liability for representations or warranties, expressed or implied, contained in or omitted from this Offering Memorandum, or any other written or oral communication transmitted or made available to the recipient. The recipient shall be entitled to rely solely on those representations and warranties that may be made to it in any final, fully executed and delivered Real Estate Purchase Agreement between it and Owner.

The information contained herein is subject to change without notice and the recipient of these materials shall not look to Owner or the SVN Advisor nor any of their officers, employees, representatives, independent contractors or affiliates, for the accuracy or completeness thereof. Recipients of this Offering Brochure are advised and encouraged to conduct their own comprehensive review and analysis of the Property.

This Offering Memorandum is a solicitation of interest only and is not an offer to sell the Property. The Owner expressly reserves the right, at its sole discretion, to reject any or all expressions of interest to purchase the Property and expressly reserves the right, at its sole discretion, to terminate negotiations with any entity, for any reason, at any time with or without notice. The Owner shall have no legal commitment or obligation to any entity reviewing the Offering Memorandum or making an offer to purchase the Property unless and until the Owner executes and delivers a signed Real Estate Purchase Agreement on terms acceptable to Owner, in Owner's sole discretion. By submitting an offer, a prospective purchaser will be deemed to have acknowledged the foregoing and agreed to release the Owner and the SVN Advisor from any liability with respect thereto.

To the extent Owner or any agent of Owner corresponds with any prospective purchaser, any prospective purchaser should not rely on any such correspondence or statements as binding Owner. Only a fully executed Real Estate Purchase Agreement shall bind the property and each prospective purchaser proceeds at its own risk.



For more information visit [www.SVNsaunders.com](http://www.SVNsaunders.com)

**HEADQUARTERS**

1723 Bartow Rd  
Lakeland, FL 33801  
863.648.1528

**ORLANDO**

605 E Robinson Street, Suite 410  
Orlando, Florida 32801  
386.438.5896

**NORTH FLORIDA**

356 NW Lake City Avenue  
Lake City, Florida 32055  
352.364.0070

**GEORGIA**

203 E Monroe Street  
Thomasville, Georgia 31792  
229.299.8600

**ARKANSAS**

112 W Center St, Suite 501  
Fayetteville, Arkansas 72701  
479.582.4113

©2024 Saunders Ralston Dantzler Real Estate. All SVN® Offices Independently Owned and Operated SVN | Saunders Ralston Dantzler Real Estate is a full-service land and commercial real estate brokerage representing buyers, sellers, investors, institutions, and landowners since 1996. We are recognized nationally as an authority on all types of land, including agriculture, ranch, recreation, and residential development. Our commercial real estate services include property management, leasing and tenant representation, valuation, business brokerage, and advisory and counseling services for office, retail, industrial, and multifamily properties. Our firm also features an auction company, a forestry division, international partnerships, and extensive expertise in conservation easements. Located in Florida, Georgia, and Alabama, we provide proven leadership and collaborative expertise backed by the strength of the SVN® global platform.

