



## Walking Distance to Packing District

Rental Rate: \$16.00 PSF MG

\* Tenant pays for utilities, janitorial, security & internet

### Property Details

Building	±3,600 sf
Roll Up Door	Two grade-level
Clear Height	10'
Zoning	I-G/W/RP, City of Orlando
Signage	Building signage available



**For further  
information**

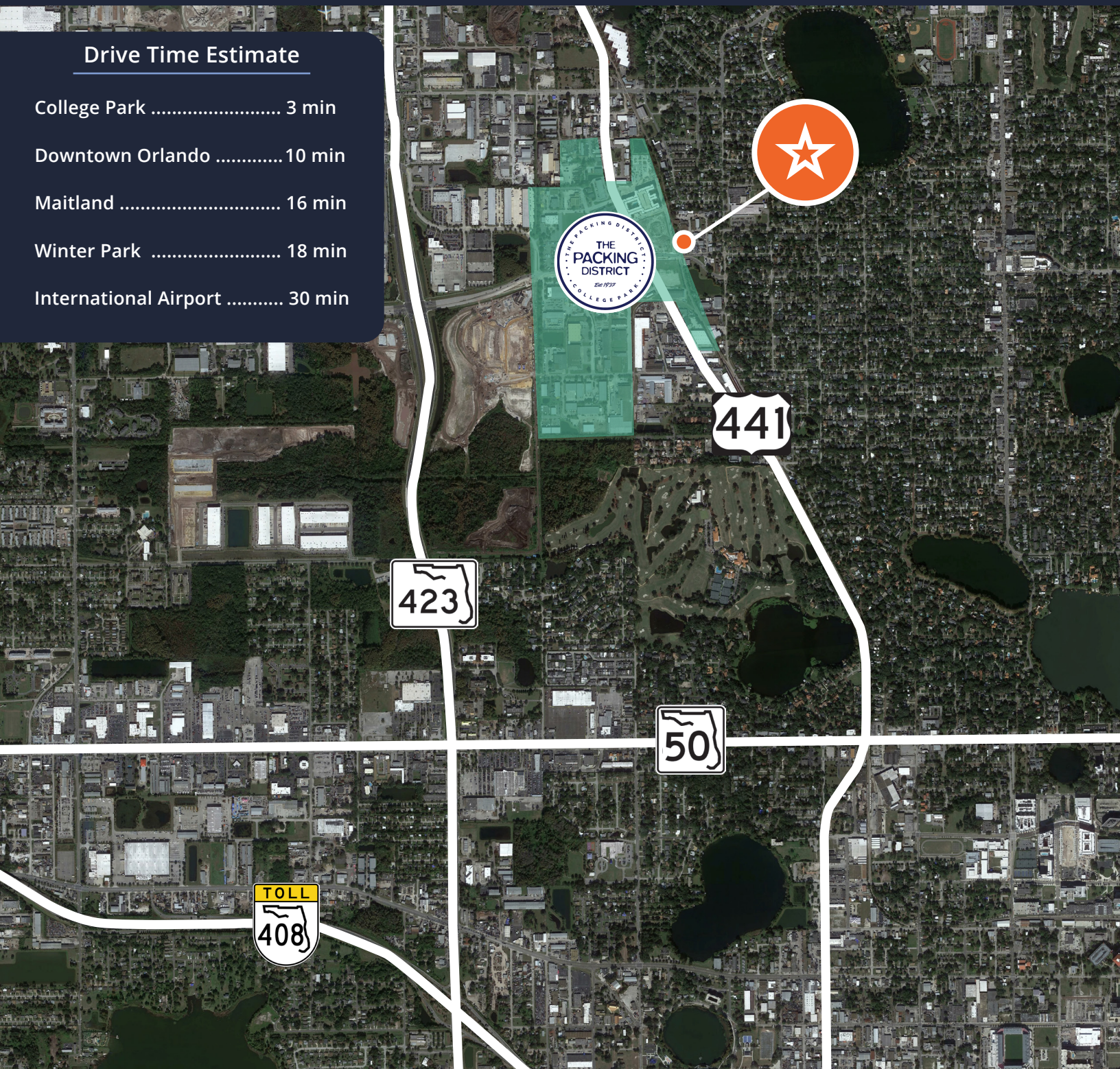
**Nathan Eissler, CCIM, SIOR**  
Principal  
+1 407 440 6658  
nathan.eissler@avisonyoung.com

avisonyoung.com



### Drive Time Estimate

- College Park ..... 3 min
- Downtown Orlando ..... 10 min
- Maitland ..... 16 min
- Winter Park ..... 18 min
- International Airport ..... 30 min



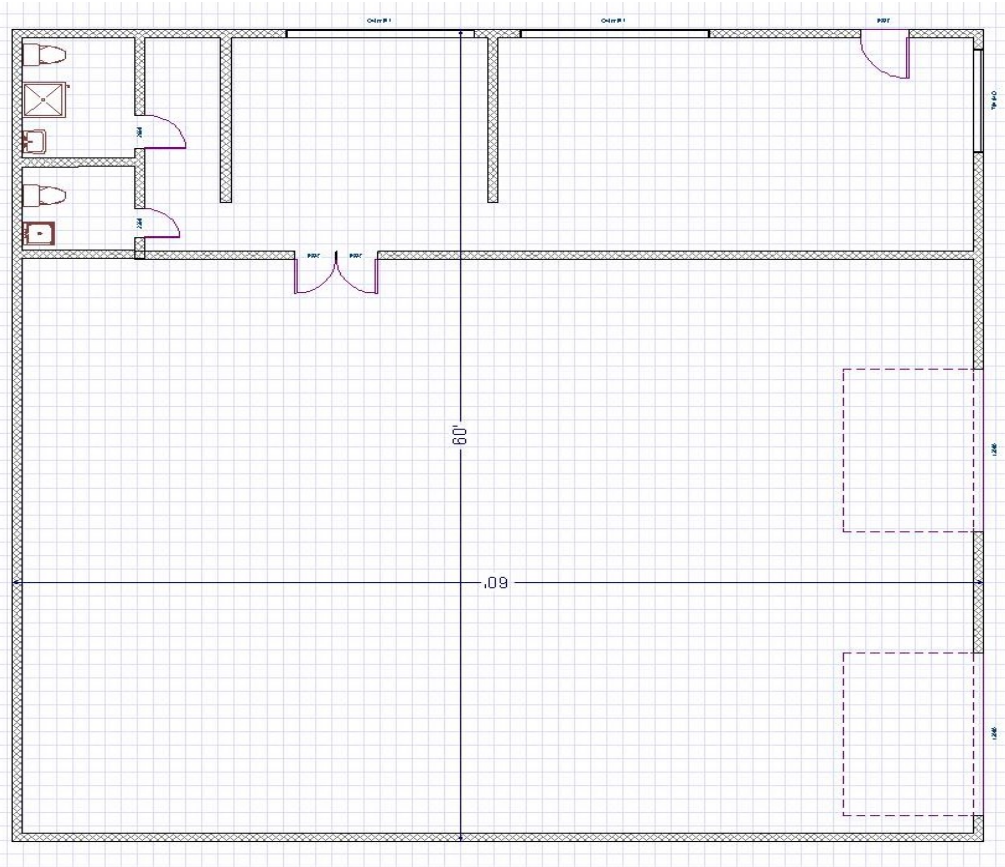
**For further  
information**

**Nathan Eissler, CCIM, SIOR**  
Principal  
+1 407 440 6658  
nathan.eissler@avisonyoung.com

[avisonyoung.com](http://avisonyoung.com)



**Building floorplan**



**For further  
information**

**Nathan Eissler, CCIM, SIOR**  
Principal  
+1 407 440 6658  
nathan.eissler@avisonyoung.com

[avisonyoung.com](http://avisonyoung.com)