

Over Half-Acre Residential Lot

1583 SW Cattail Court, Palm City, FL 34990

NAI Southcoast



SW STUART WEST BLVD

Community Park



SW WHOOPING CRANE WAY

SW CATTAIL CT



SW STONES THROW TER



Presented by

Adam Karol
Sales Associate
+1 772 291 8856
akarol@naisouthcoast.com
www.naisouthcoast.com

Casey Combs
Sales Associate
+1 772 285 8769
ccombs@naisouthcoast.com
www.naisouthcoast.com

Douglas Legler
Principal | Broker Associate
+1 772 405 7778
douglas@naisouthcoast.com
www.naisouthcoast.com

FOR SALE:
\$250,000

Over Half-Acre Residential Lot

1583 SW Cattail Court, Palm City, FL 34990

Property Features

Address: 1583 SW Cattail Ct., Palm City, FL, 34990

Price: \$250,000

Land Size: 0.544 Acres

Parcel ID: 01-38-39-001-000-00220-9

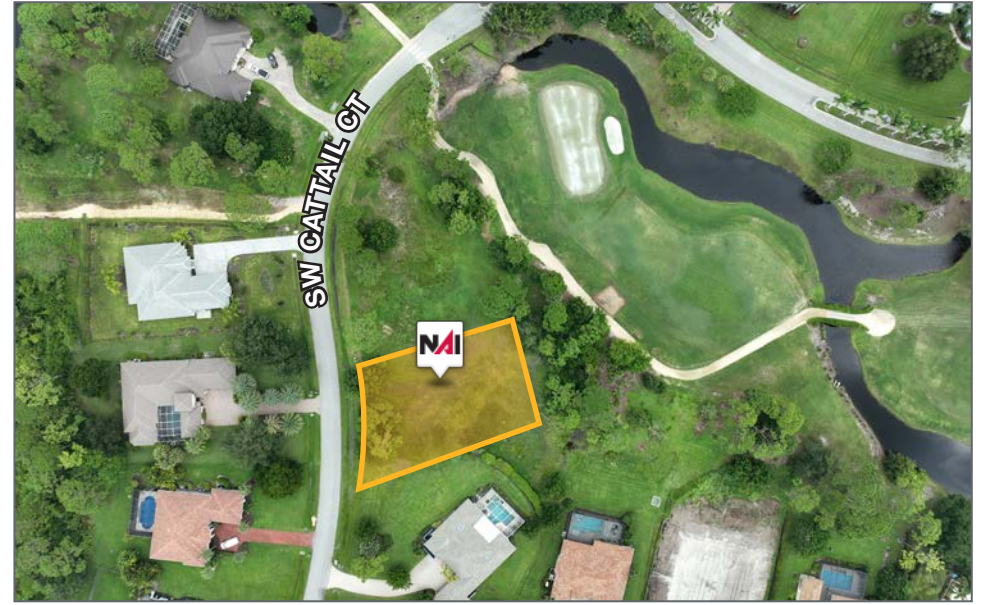
Zoning: PUD-R (Residential)

Property Overview

This large lot zoned for Single-Family Residential development offers an excellent opportunity to build in the highly desirable, luxurious Cobblestone Country Club of Palm City in Martin County, FL.

This high-income community has an average household income of \$312,596 within a 1-mile radius of the site and offers future residents a choice of highly rated Martin County schools.

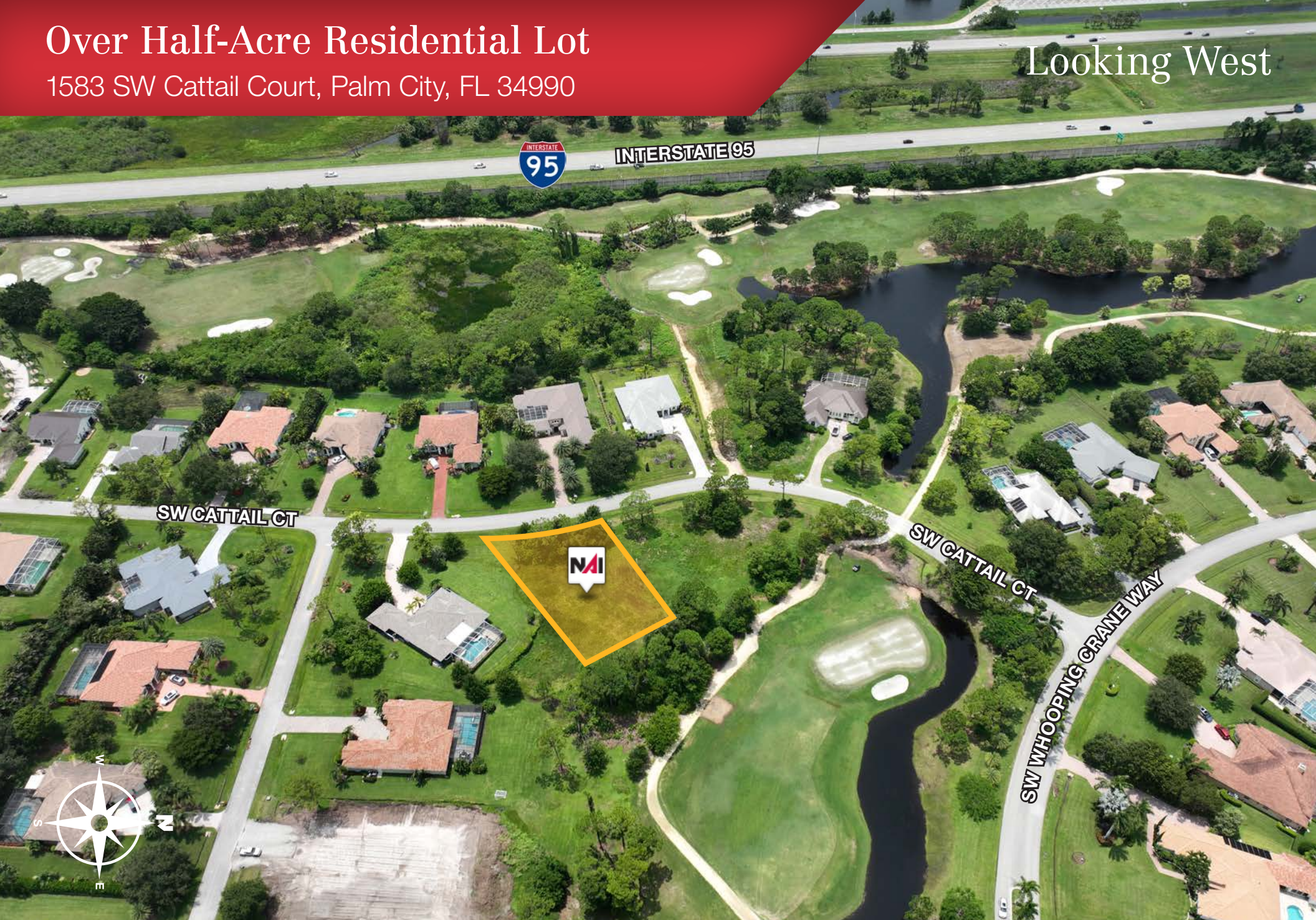
The area supports an active lifestyle, boasting nearby parks, golf courses, tennis, clubhouses, picnic areas, fitness centers, and more. Cobblestone is seamlessly integrated with the private 18-hole Cape Club golf course and shares guarded gates with the upscale Stuart West Equestrian Community. Beyond the idyllic scenery and tranquility, this location also offers quick and convenient access to I-95 for commuting and travel up and down Florida's east coast.



Over Half-Acre Residential Lot

1583 SW Cattail Court, Palm City, FL 34990

Looking West



INTERSTATE 95

SW CATTAIL CT

SW CATTAIL CT

SW WHOOPIING CRANE WAY



Over Half-Acre Residential Lot

1583 SW Cattail Court, Palm City, FL 34990

Looking East



Community Park



SW STUART WEST BLVD

SW WHOOPING CRANE WAY

SW STONES THROWER

SW CATTAIL CT



Over Half-Acre Residential Lot

1583 SW Cattail Court, Palm City, FL 34990

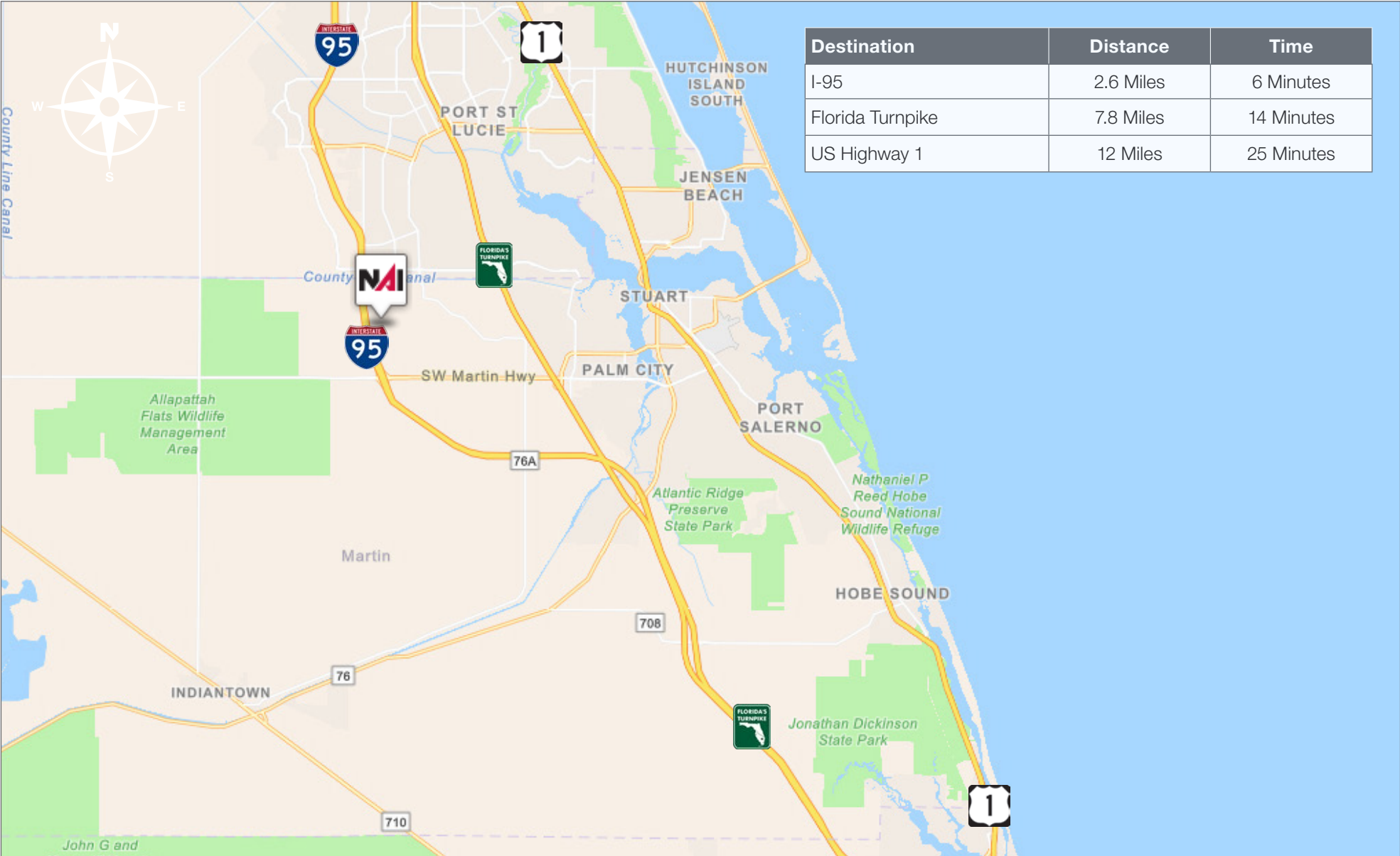
Looking South



Over Half-Acre Residential Lot

1583 SW Cattail Court, Palm City, FL 34990

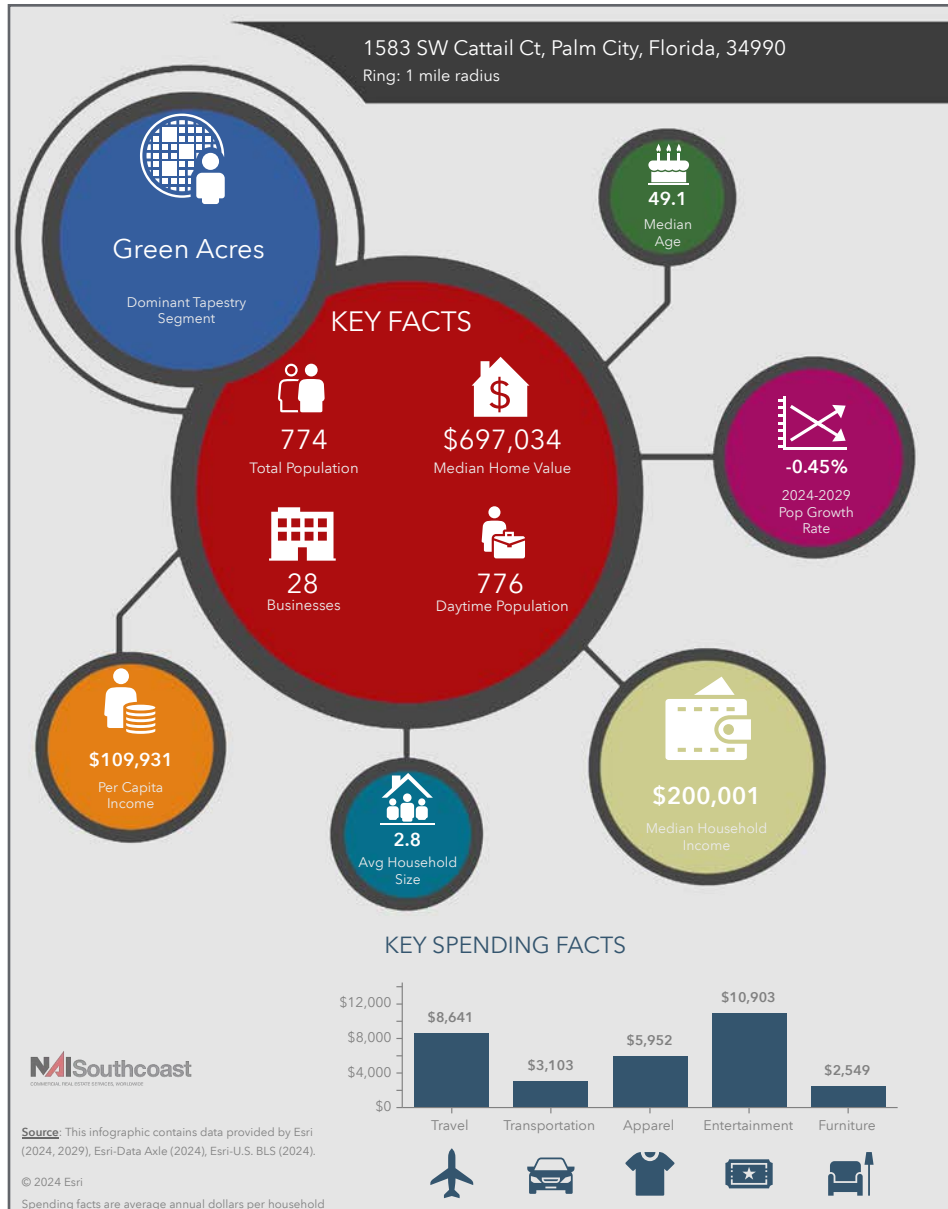
Drive Time



Over Half-Acre Residential Lot

1583 SW Cattail Court, Palm City, FL 34990

2023 Demographics



Population

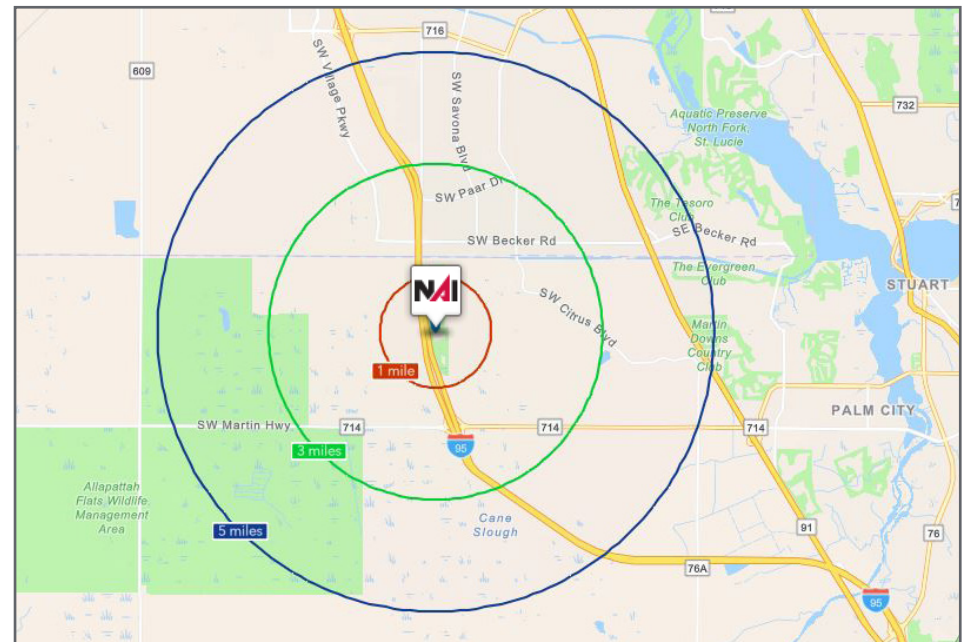
- 1 Mile: 774
- 3 Mile: 15,099
- 5 Mile: 62,907

Average Household Income

- 1 Mile: \$312,596
- 3 Mile: \$136,008
- 5 Mile: \$113,908

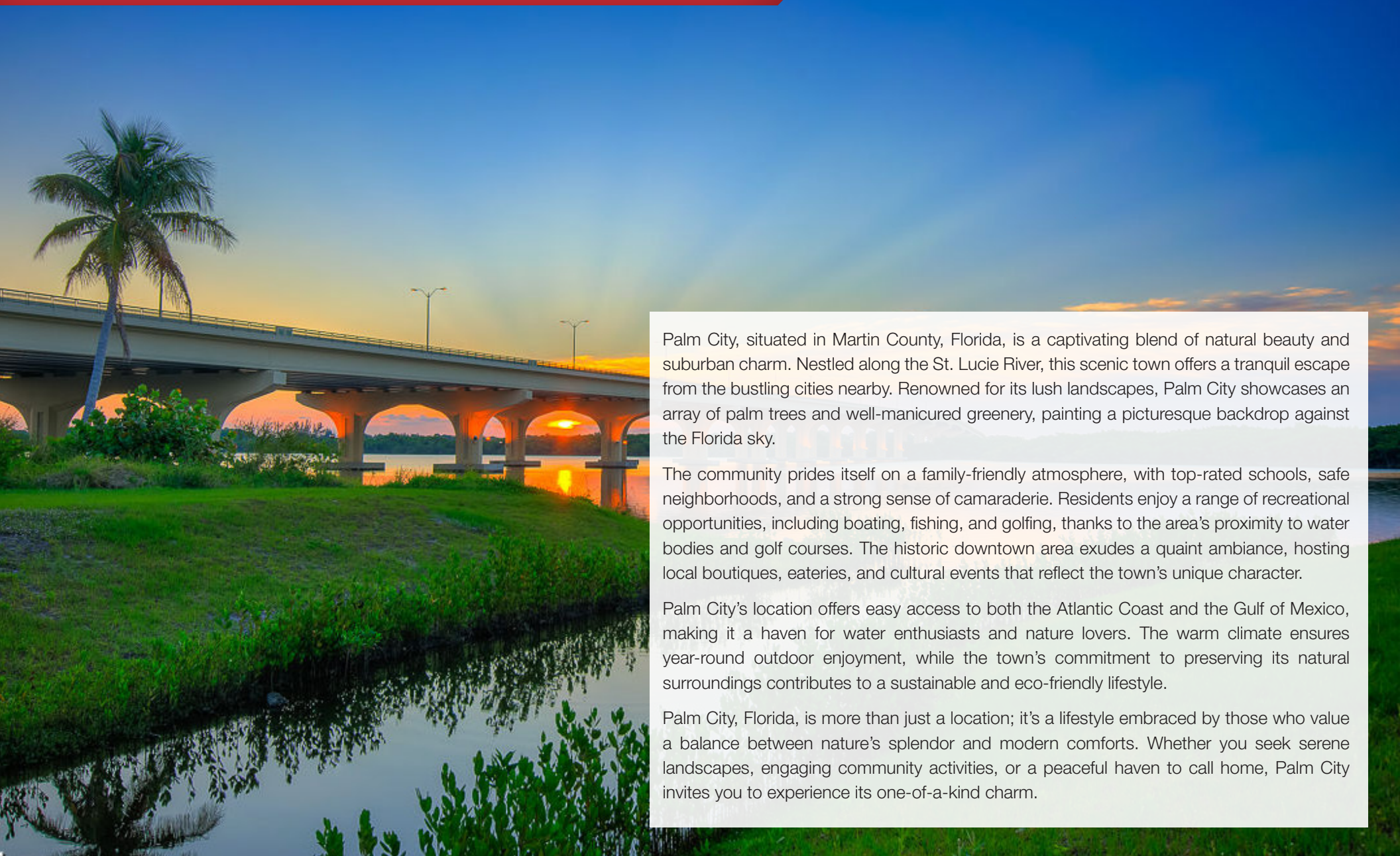
Median Age

- 1 Mile: 49.1
- 3 Mile: 39.5
- 5 Mile: 42.0



City Overview

Palm City, Florida



Palm City, situated in Martin County, Florida, is a captivating blend of natural beauty and suburban charm. Nestled along the St. Lucie River, this scenic town offers a tranquil escape from the bustling cities nearby. Renowned for its lush landscapes, Palm City showcases an array of palm trees and well-manicured greenery, painting a picturesque backdrop against the Florida sky.

The community prides itself on a family-friendly atmosphere, with top-rated schools, safe neighborhoods, and a strong sense of camaraderie. Residents enjoy a range of recreational opportunities, including boating, fishing, and golfing, thanks to the area's proximity to water bodies and golf courses. The historic downtown area exudes a quaint ambiance, hosting local boutiques, eateries, and cultural events that reflect the town's unique character.

Palm City's location offers easy access to both the Atlantic Coast and the Gulf of Mexico, making it a haven for water enthusiasts and nature lovers. The warm climate ensures year-round outdoor enjoyment, while the town's commitment to preserving its natural surroundings contributes to a sustainable and eco-friendly lifestyle.

Palm City, Florida, is more than just a location; it's a lifestyle embraced by those who value a balance between nature's splendor and modern comforts. Whether you seek serene landscapes, engaging community activities, or a peaceful haven to call home, Palm City invites you to experience its one-of-a-kind charm.

County Overview

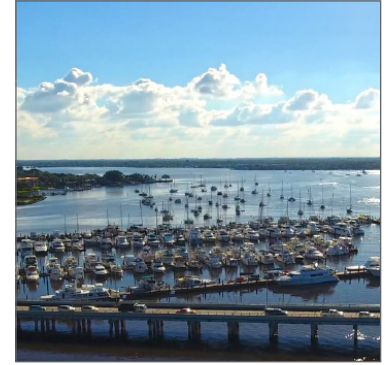
Martin County, Florida

The cities that make up Martin County include Jensen Beach/Rio, Stuart/Sewall's Point, Hutchinson Island, Hobe Sound, Jupiter/ Tequesta, Palm City, Port Salerno and Indiantown. Martin County is a wonderful place to visit and live, with beaches, golf, fishing and boating. The County boasts arts, quaint downtowns with shops, gourmet dining, galleries, museums, historic places, festivals and more.

Martin County is for...

The golf enthusiast... Martin County is home to over 35 world-class golf courses all within a 15-mile radius. The sun worshiper... The County offers its visitors and residents alike some of the finest beaches on the east coast. The discriminating arts shopper... More than 20 galleries participate in a monthly First Thursday gallery night. Many of these galleries are in the historic downtowns of Stuart, Jensen Beach, Port Salerno and Hobe Sound. The music lover... The historic Lyric Theatre offers a wide-array of first class talent nearly 300 days a year... This acoustically amazing theatre features concerts for all music lovers, from classical to rock and roll, and theatrical performances by local and national talent.

Mark your calendars for a plethora of events to look forward to in Martin County, Florida. The Stuart Air Show, Stuart Boat Show, ArtsFest, and the Martin County Fair are just some of the many events taking place throughout the year. The Treasure Coast Children's Museum, located at Indian Riverside Park, is a great place for kids and families, offering a water play area, fishing, and a riverfront view. Often, there are events in the park including concerts, orchid shows, and more. Indian Riverside Park also features the Maritime and Yachting Museum. Hutchinson Island is home to the Elliott Museum which celebrates the genius of innovation, creativity and the historical events of Martin County. Named after the prolific inventor Sterling Elliott, the museum hosts permanent exhibits showcasing Model A Trucks, early transportation, the history of Stuart and its surrounding regions, and baseball memorabilia. For the scientifically minded and curious kids, the Florida Oceanographic Coastal Center offers fun opportunities to learn about our local ecosystem.



Presented By



Adam Karol

Sales Associate
+1 772 291 8856
akarol@naisouthcoast.com



Casey Combs

Sales Associate
+1 772 285 8769
ccombs@naisouthcoast.com



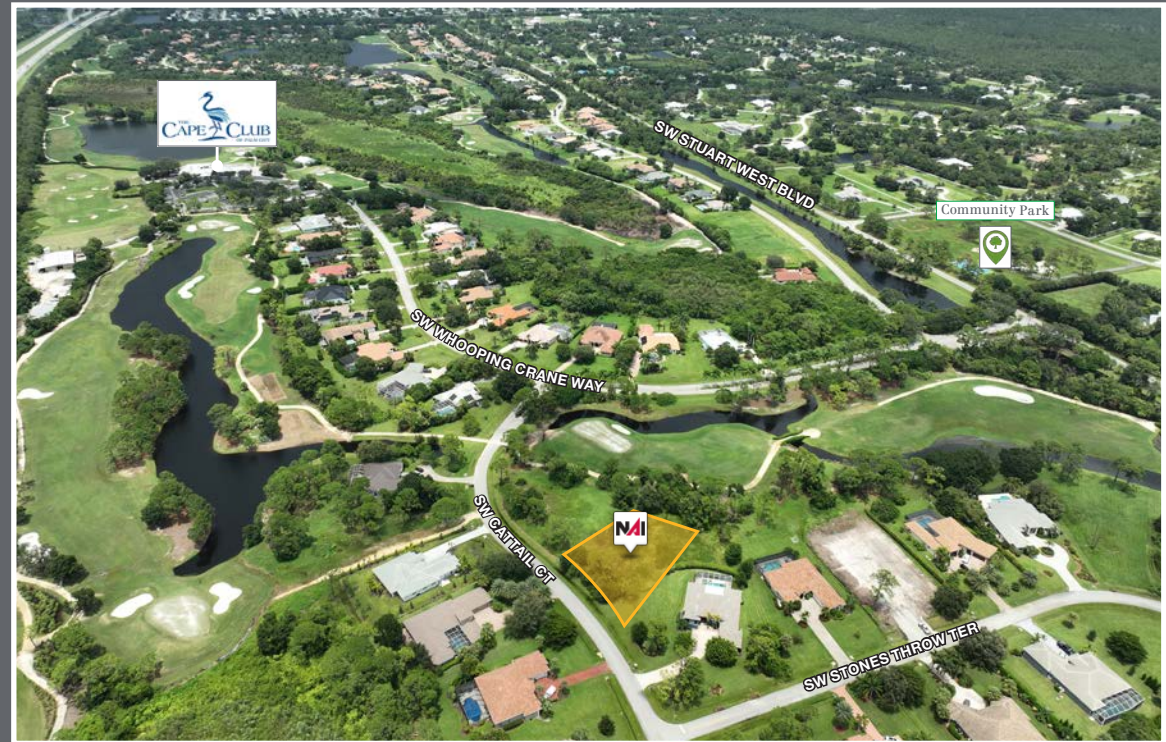
Douglas Legler

Principal | Broker Associate
+1 772 405 7778
douglas@naisouthcoast.com

NAI Southcoast
www.naisouthcoast.com

Over Half-Acre Residential Lot

1583 SW Cattail Court, Palm City, FL 34990



FOR SALE:

\$250,000

NO WARRANTY OR REPRESENTATION, EXPRESS OR IMPLIED, IS MADE AS TO THE ACCURACY OF THE INFORMATION CONTAINED HEREIN, AND THE SAME IS SUBMITTED SUBJECT TO ERRORS, OMISSIONS, CHANGE OF PRICE, RENTAL OR OTHER CONDITIONS, PRIOR SALE, LEASE OR FINANCING, OR WITHDRAWAL WITHOUT NOTICE, AND OF ANY SPECIAL LISTING CONDITIONS IMPOSED BY OUR PRINCIPALS NO WARRANTIES OR REPRESENTATIONS ARE MADE AS TO THE CONDITION OF THE PROPERTY OR ANY HAZARDS CONTAINED THEREIN ARE ANY TO BE IMPLIED.