

HISTORIC CBD OFFICE | MULTI TENANT **FOR LEASE**



255 North Kentucky Avenue, Lakeland, Florida 33801

Property Highlights

- **HISTORIC BUILDING - CBD LOCATION**
- **ONE EXECUTIVE SUITE AVAILABLE**
- **FIRST FLOOR CONFERENCE & RESTROOMS**
- **ON-SITE PARKING**



Jack Stollo, CCIM, CPM Vice President, Broker 863-683-3425 jstollo@resbroadway.com
100 S. Kentucky Avenue Suite 290, Lakeland, FL 33801

LOCATION MAP

255 North Kentucky Avenue, Lakeland FL 33801



255 North Kentucky Avenue, Lakeland, Florida 33801

Property: This is a statuesque 1910 Victorian home that has been converted to a multi-tenant office building. It features stunning wood floors and intricate wood details throughout. A wraparound porch greets your guests as they enter into a lovely atrium with adjoining common conference, waiting and restroom area. The second-floor features walk-up executive offices and restroom. Currently one suite is available.

Location: This site is in the heart of downtown Lakeland at the corner of Bay Street and N. Kentucky Ave. You are within blocks from numerous dining establishments, banking, retail, parks, and city offices. Lakeland is located approximately 35 miles east of Tampa and 55 miles southwest of Orlando along Interstate I-4. The city is home to Florida Southern College, Florida Polytechnic University, Southeastern University, Polk Community College, and Publix. Lakeland is showing positive job growth and offers a lower cost of living than area other areas along the I-4 corridor. There are over 10,000,000 people within a 100-mile radius of Lakeland; a fact that is causing exponential growth in the area.

Executive Suite: 202- \$700.00

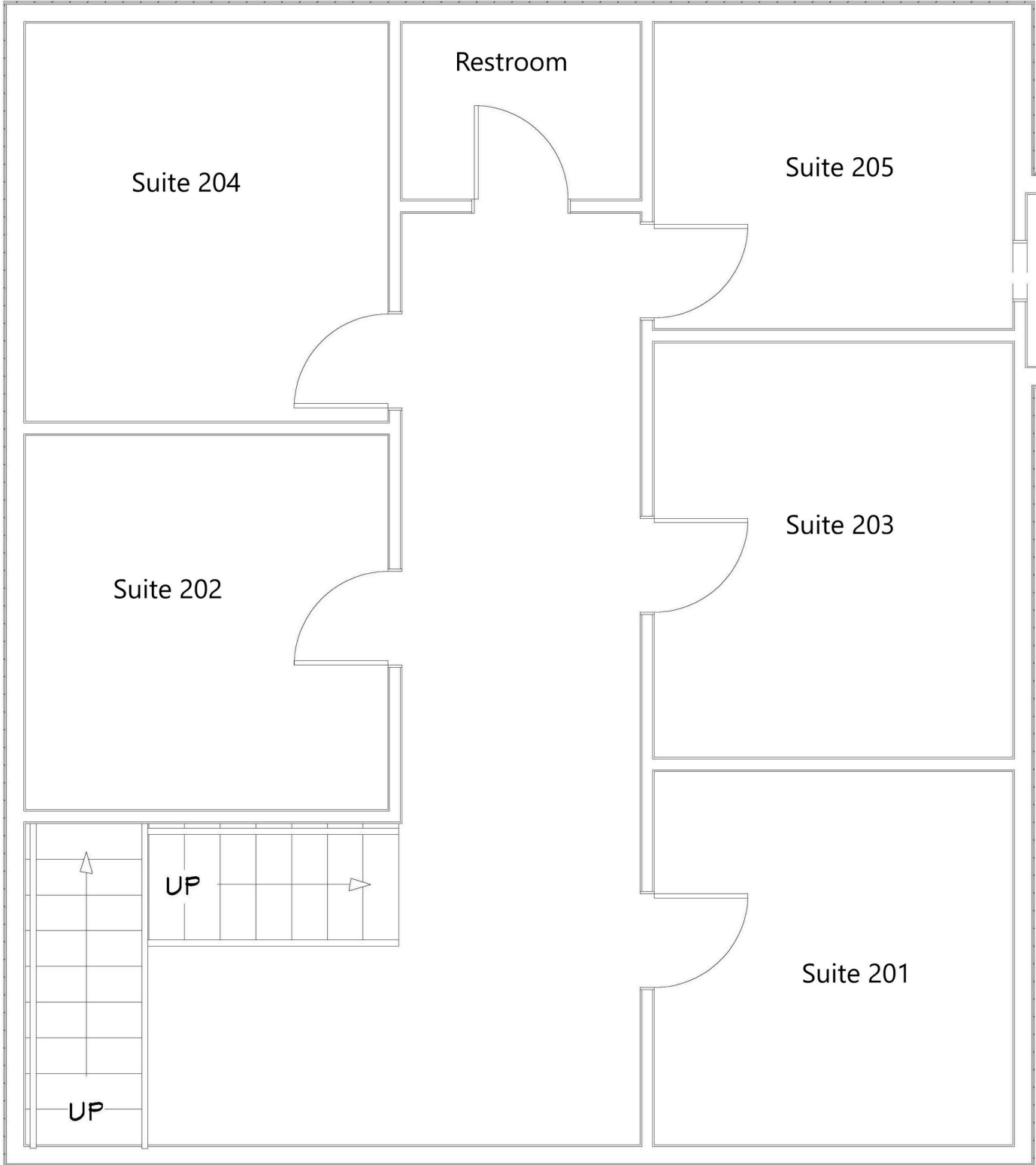
Suite: 204- \$700.00

Suite: 205- \$595.00



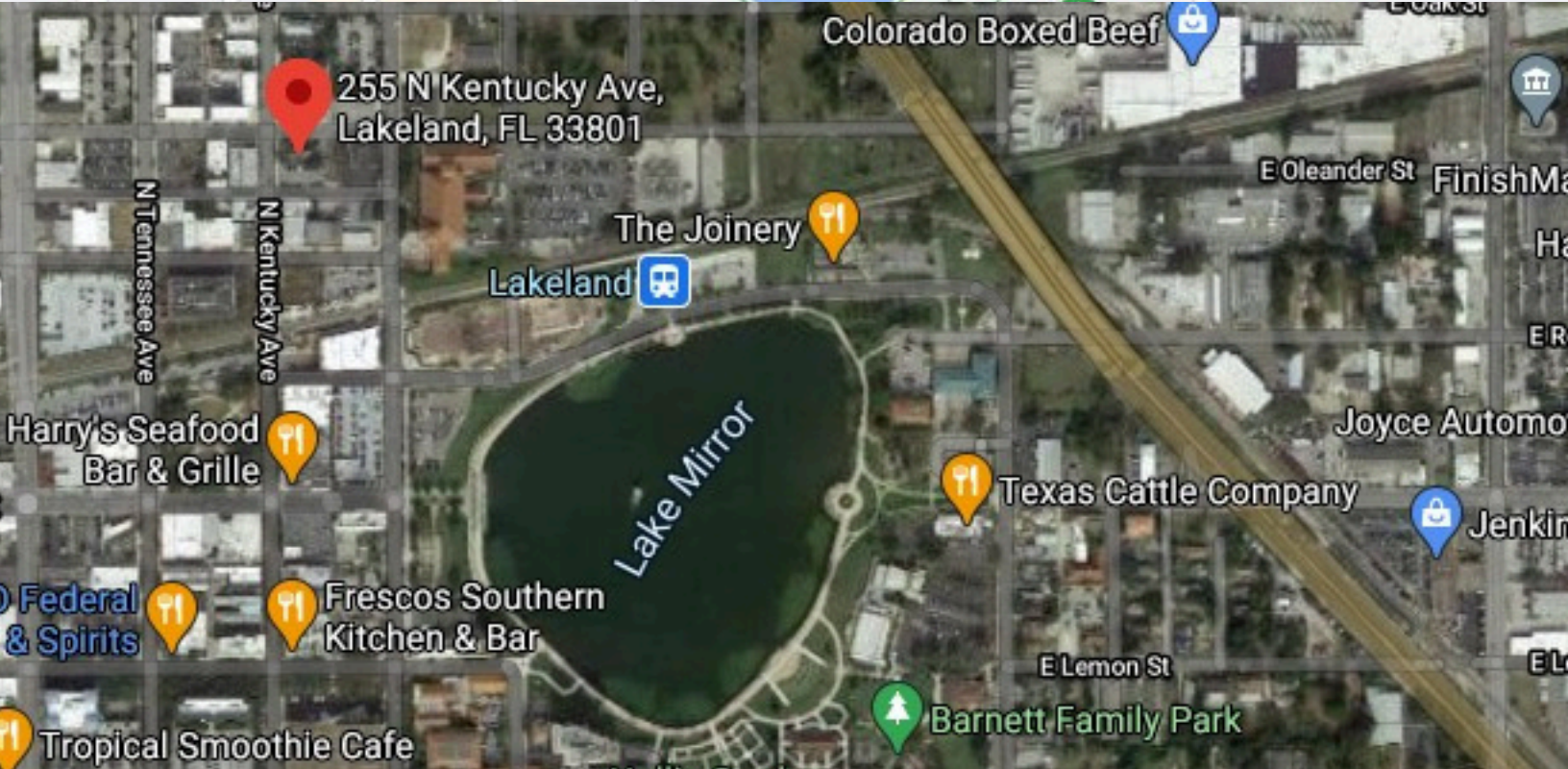
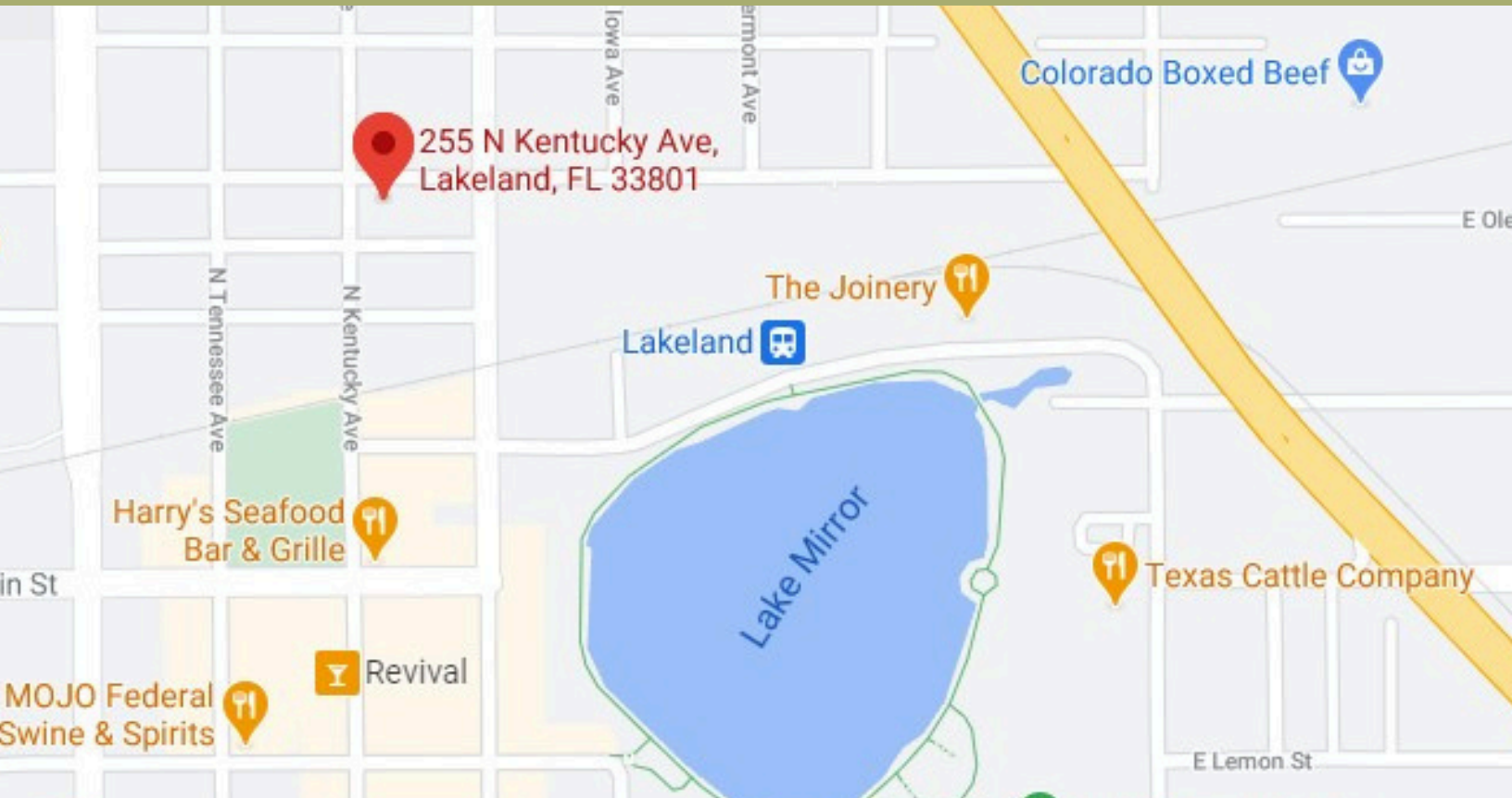
Jack Strollo, CCIM, CPM Vice President, Broker 863-683-3425 jstrollo@resbroadway.com
100 S. Kentucky Avenue Suite 290, Lakeland, FL 33801

Floor Plan
255 North Kentucky Avenue, Lakeland FL 33801



LOCATION MAP

255 North Kentucky Avenue, Lakeland FL 33801



Jack Stollo, CCIM, CPM Vice President, Broker 863-683-3425 jstollo@resbroadway.com
100 S. Kentucky Avenue Suite 290, Lakeland, FL 33801

Property Photos
255 North Kentucky Avenue, Lakeland FL 33801



Jack Strollo, CCIM, CPM Vice President, Broker 863-683-3425 jstrollo@resbroadway.com
100 S. Kentucky Avenue Suite 290, Lakeland, FL 33801

Property Photos
255 North Kentucky Avenue, Lakeland FL 33801



Jack Stollo, CCIM, CPM Vice President, Broker 863-683-3425 jstollo@resbroadway.com
100 S. Kentucky Avenue Suite 290, Lakeland, FL 33801



Community

Located on the I-4 Corridor of Central Florida between Tampa and Orlando, Lakeland is quickly transforming into a global economic hub. In proximity are two international airports, two interstate highways, passenger, and freight rails, and a deep water port.

With access to skilled employees from our world-class education facilities such as Florida Southern College, Southeastern University, and Florida Polytechnic, Lakeland has become the headquarters or regional hub for major corporations like Publix Supermarkets, SaddleCreek, GEICO, Lockheed Martin, and FedEx.

Join these strategic companies as a shareholder in Lakeland's highly favorable business and real estate market. With multiple economic development councils, entrepreneurship incubators, and competitive tax rates, there is no better time to make an investment in Lakeland.

LAKELAND RANKINGS

- **#1 FASTEST GROWING CITY IN US** (Bloomberg)
- **#2 TOP METRO HIGHEST IN MIGRATION** (CoreLogic, Inc.)
- **#3 TOP BOOMTOWNS IN AMERICA** (Lendingtree)
- **#4 IN FASTEST-GROWING PLACES** (Usnews.com)
- **#5 SAFEST PLACE TO LIVE** (Usnews.com)
- **#12 BEST PLACES TO LIVE IN FLORIDA** (Usnews.com)
- **BEST PLACE TO START A BUSINESS** (Inc.com)

LAKELAND BENEFITS

- **North & South Highways: I-75, I-95, Hwy 27**
- **East & West Highways: I-4, Hwy 60, Hwy 92**
- **32 Miles from Tampa, 54 Miles from Orlando**
- **CSX Rail Access**
- **Lakeland Linder International Airport for jet use and Amazon Prime Air**
- **2 Major Airports less than 1 hour away**
- **Over 10 Million People within 100 Miles**
- **Largest Municipality in Polk County**
- **City of Lakeland population: 120,280**
- **Average annual wages: \$56,376**
- **Unemployment rate: 3.4%**
- **Florida's 4th Best City in business tax climate index**