

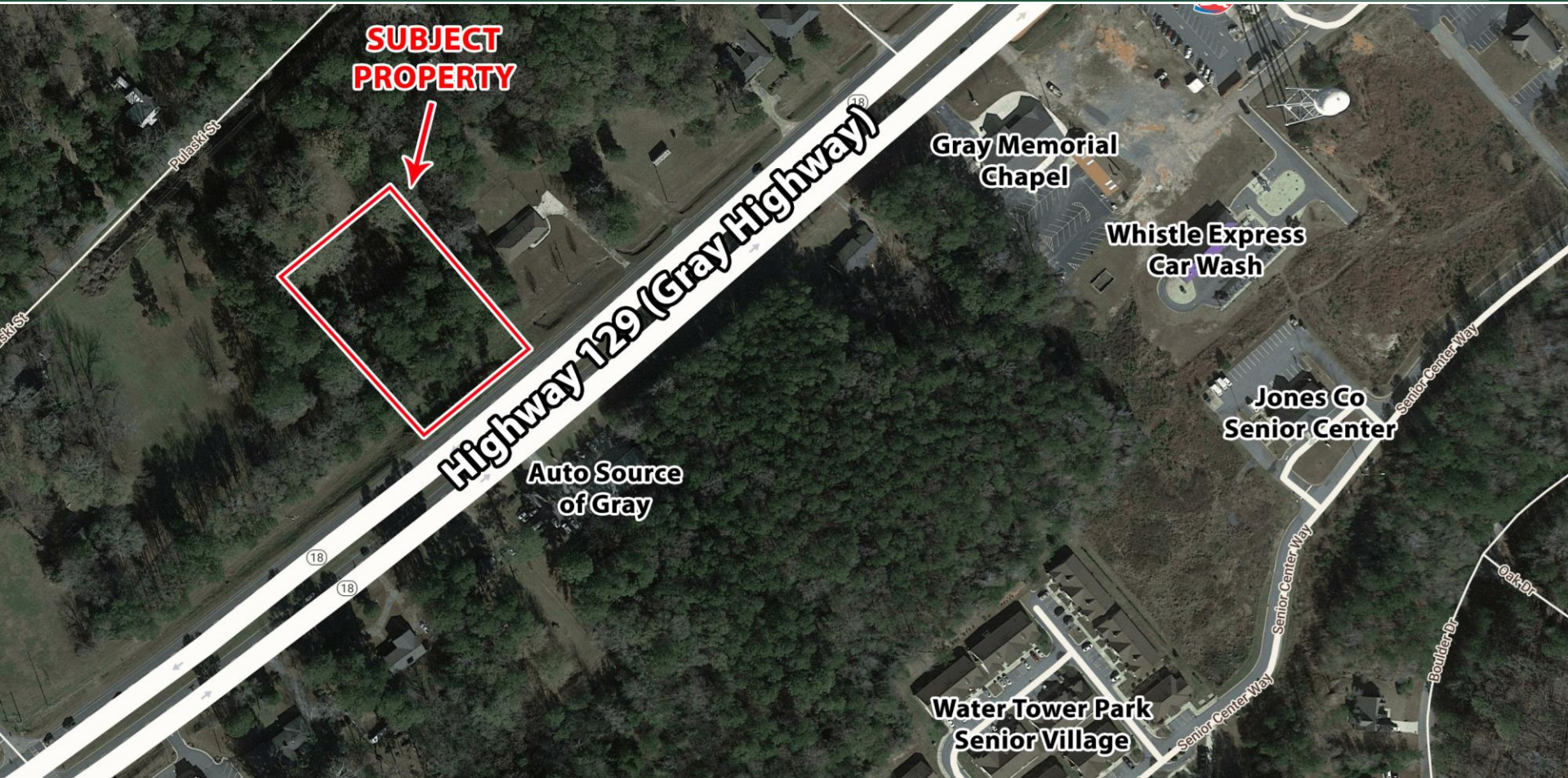
**FOR SALE – 1.91 Acre Commercial Tract**  
**Tract A-1, Highway 129 (Gray Highway)**  
**Gray, GA 31032**



Summary

Area Info

Aerial



**CONTACT**

**Patty Burns, CCIM, ALC**  
478-746-9421 Office  
478-951-5100 Cell  
patty@fickling.com

**Trip Wilhoit, CCIM, ALC**  
478-746-9421 Office  
478-960-4080 Cell  
trip@fickling.com

**Jim Fain**  
478-997-6400 Office  
478-363-2145 Cell  
jfain@fickling.com



577 Mulberry St, Suite 1100  
Macon, GA 31201  
478.746.9421 Office  
<https://commercial.fickling.com>

# FOR SALE – 1.91 Acre Commercial Tract Tract A-1, Highway 129 (Gray Highway) Gray, GA 31032



Summary

Area Info

Aerial

## PROPERTY INFORMATION

### PROPERTY

**Property Address:** Highway 129 (Gray Highway)  
Gray, GA 31032

**County:** Jones

**Utilities:** All utilities available

**Frontage:** 260'ft on Highway 129

**Traffic Count:** Highway 129 – 10,663 VPD

### SITE

**Site Size:** 1.914 Acres

**Parcel ID:** G07 00 229

**Zoning:** C-2 (With historic overlay)

**REDUCED PRICE: \$79,000**

**~~SALE PRICE: \$123,900~~**

Demographics 2023	3 Miles	5 Miles	10 Miles
Population	7,963	11,832	34,160
Avg HH Income	\$92,987	\$99,373	\$84,132
Median Age	39.3	40.7	40.2

### CONTACT

**Patty Burns, CCIM, ALC**  
478-746-9421 Office  
478-951-5100 Cell  
patty@fickling.com

**Trip Wilhoit, CCIM, ALC**  
478-746-9421 Office  
478-960-4080 Cell  
trip@fickling.com

**Jim Fain**  
478-997-6400 Office  
478-363-2145 Cell  
jfain@fickling.com



577 Mulberry St, Suite 1100  
Macon, GA 31201  
478.746.9421 Office  
https://commercial.fickling.com

# FOR SALE – 1.91 Acre Commercial Tract Tract A-1, Highway 129 (Gray Highway) Gray, GA 31032



Summary

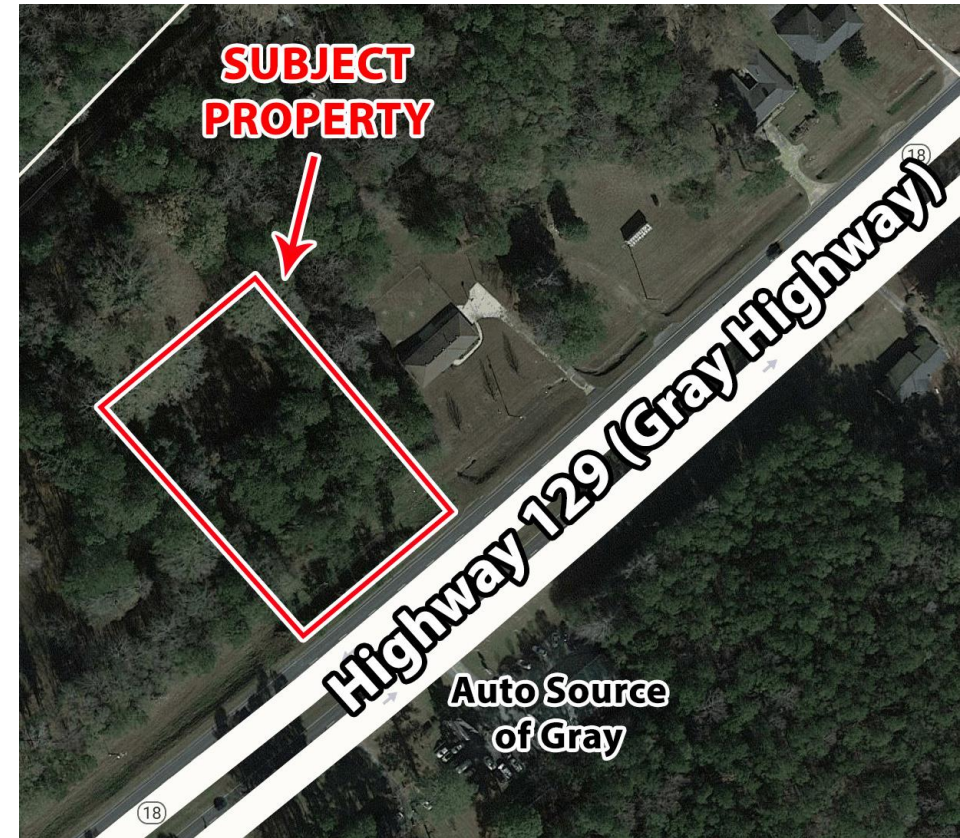
Area Info

Aerial

## PROPERTY INFORMATION

### LOCATION

Property is conveniently located 12± miles from Downtown Macon. Surrounding neighbors include Auto Source of Gray, Popeyes, Dairy Queen, McDonald's, Verizon, Tri-County EMC, Robins Financial, Cadence Bank, Ingles, and many more retailer, restaurants, and businesses.



### CONTACT

**Patty Burns, CCIM, ALC**  
478-746-9421 Office  
478-951-5100 Cell  
patty@fickling.com

**Trip Wilhoit, CCIM, ALC**  
478-746-9421 Office  
478-960-4080 Cell  
trip@fickling.com

**Jim Fain**  
478-997-6400 Office  
478-363-2145 Cell  
jfain@fickling.com



577 Mulberry St, Suite 1100  
Macon, GA 31201  
478.746.9421 Office  
<https://commercial.fickling.com>

# FOR SALE – 1.91 Acre Commercial Tract

## Tract A-1, Highway 129 (Gray Highway)

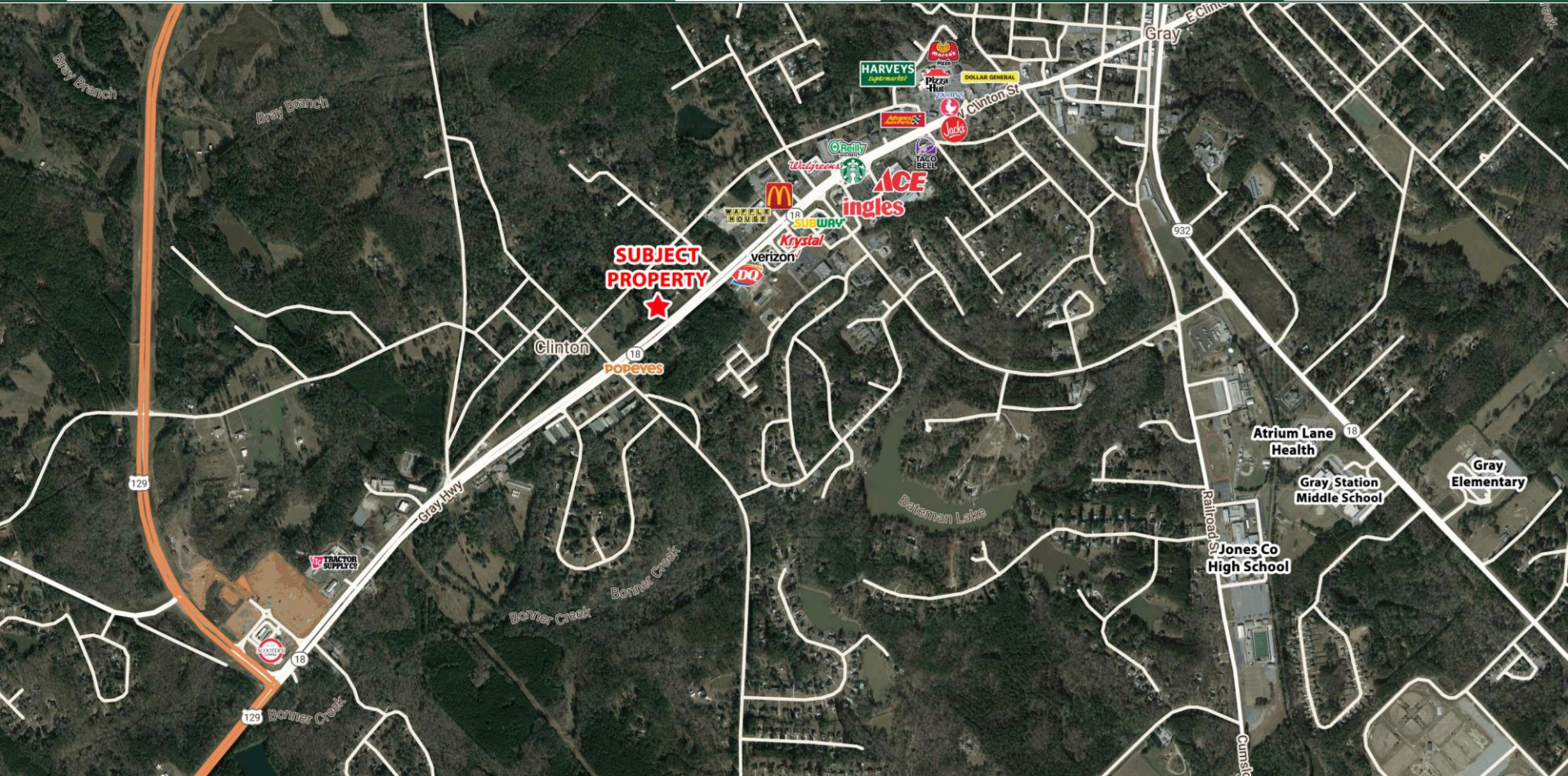
### Gray, GA 31032



Summary

Area Info

Aerial



#### CONTACT

**Patty Burns, CCIM, ALC**  
478-746-9421 Office  
478-951-5100 Cell  
patty@fickling.com

**Trip Wilhoit, CCIM, ALC**  
478-746-9421 Office  
478-960-4080 Cell  
trip@fickling.com

**Jim Fain**  
478-997-6400 Office  
478-363-2145 Cell  
jfain@fickling.com



577 Mulberry St, Suite 1100  
Macon, GA 31201  
478.746.9421 Office  
<https://commercial.fickling.com>