

FOR LEASE

Owned and Operated by



Crossroads Business Park

401 Gills Dr., Orlando, FL 32824

CLICK TO VIEW MAP



±216,478 SF



**LEASING INFO
& CONTACT**

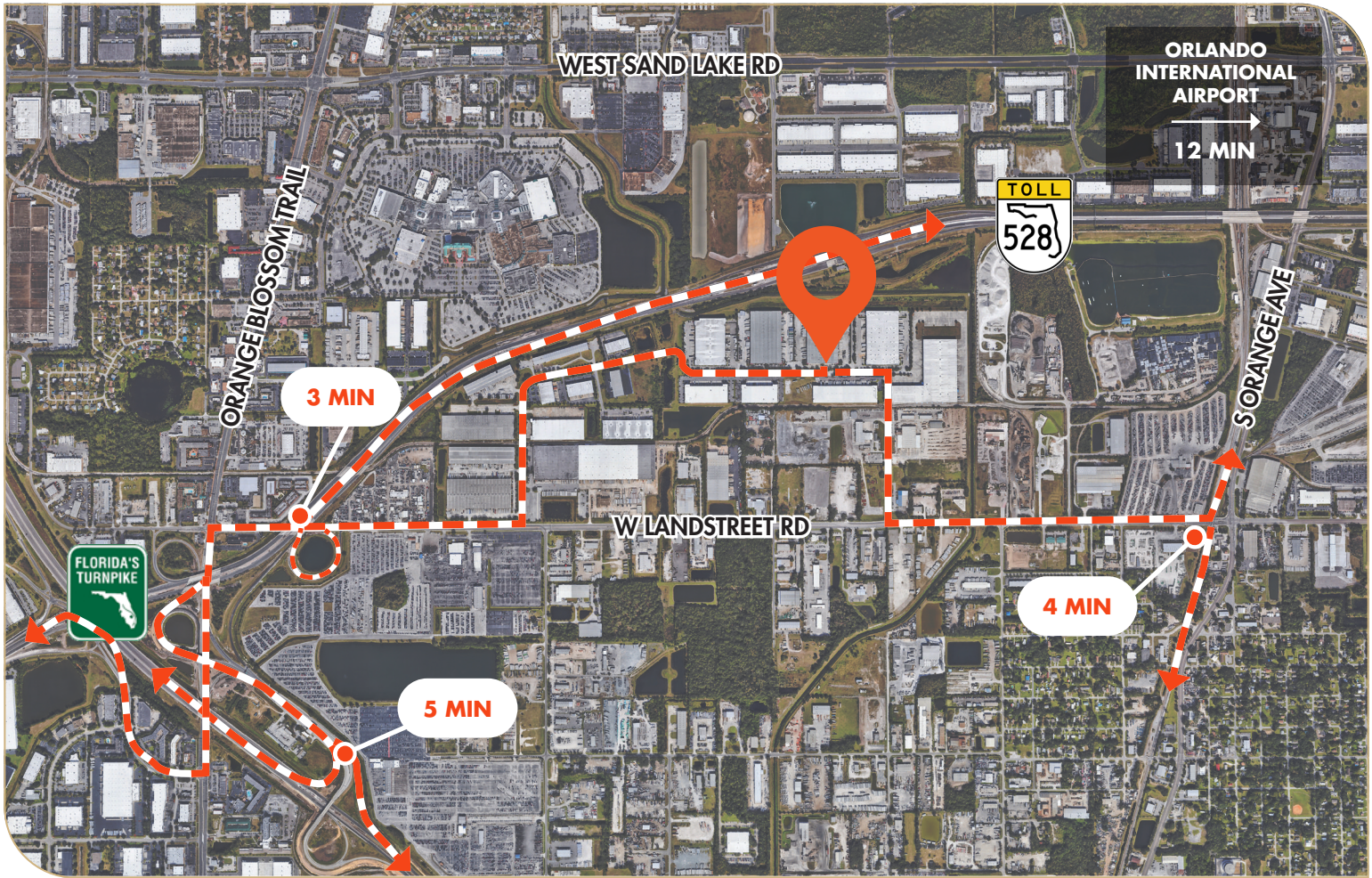
Justin Ruby, SIOR, CCIM (407) 865-0311 / justin.ruby@foundrycommercial.com

Joey Woodman (407) 748-5888 / joey.woodman@foundrycommercial.com

Travis Hammond (407) 401-1707 / travis.hammond@foundrycommercial.com



This is not an offer or acceptance of an offer to lease space. A lease will only be offered or made in a written agreement signed by landlord. No representation or warranty of any kind is made by landlord unless set forth in a written definitive lease executed by the landlord.



PROPERTY HIGHLIGHTS

+/- 14,623 SF of Office

30' Clear Height

Cross Dock Loading

55 Dock Doors (24 Pit Levelers)

4 Ramp Doors

167 Parking Spaces

40'x40' Columns

60' Speed Bays

High Volume Sprinklers

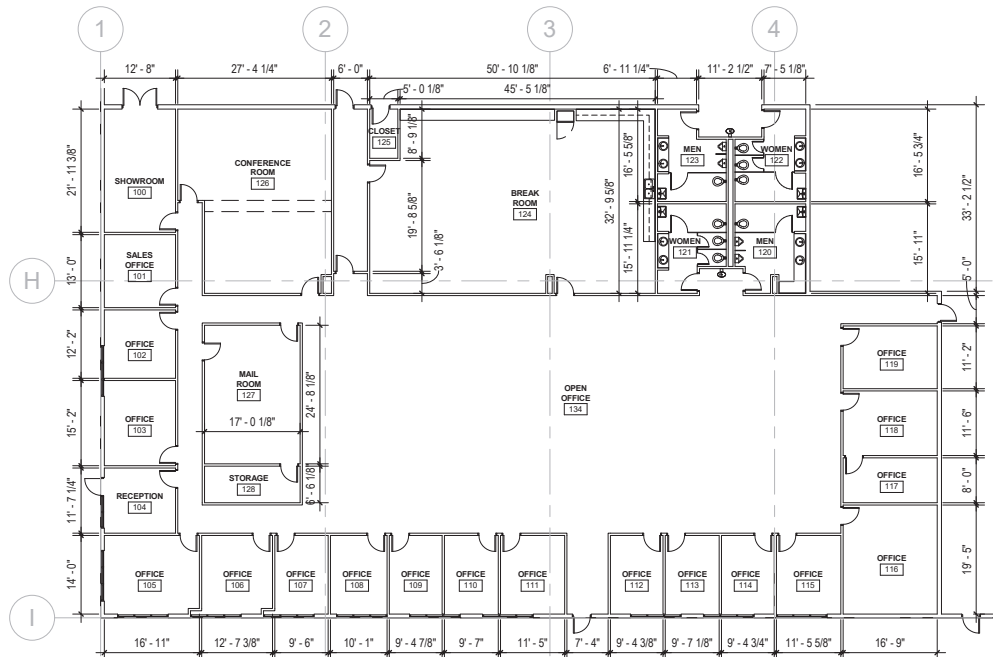
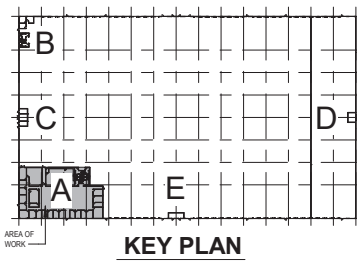
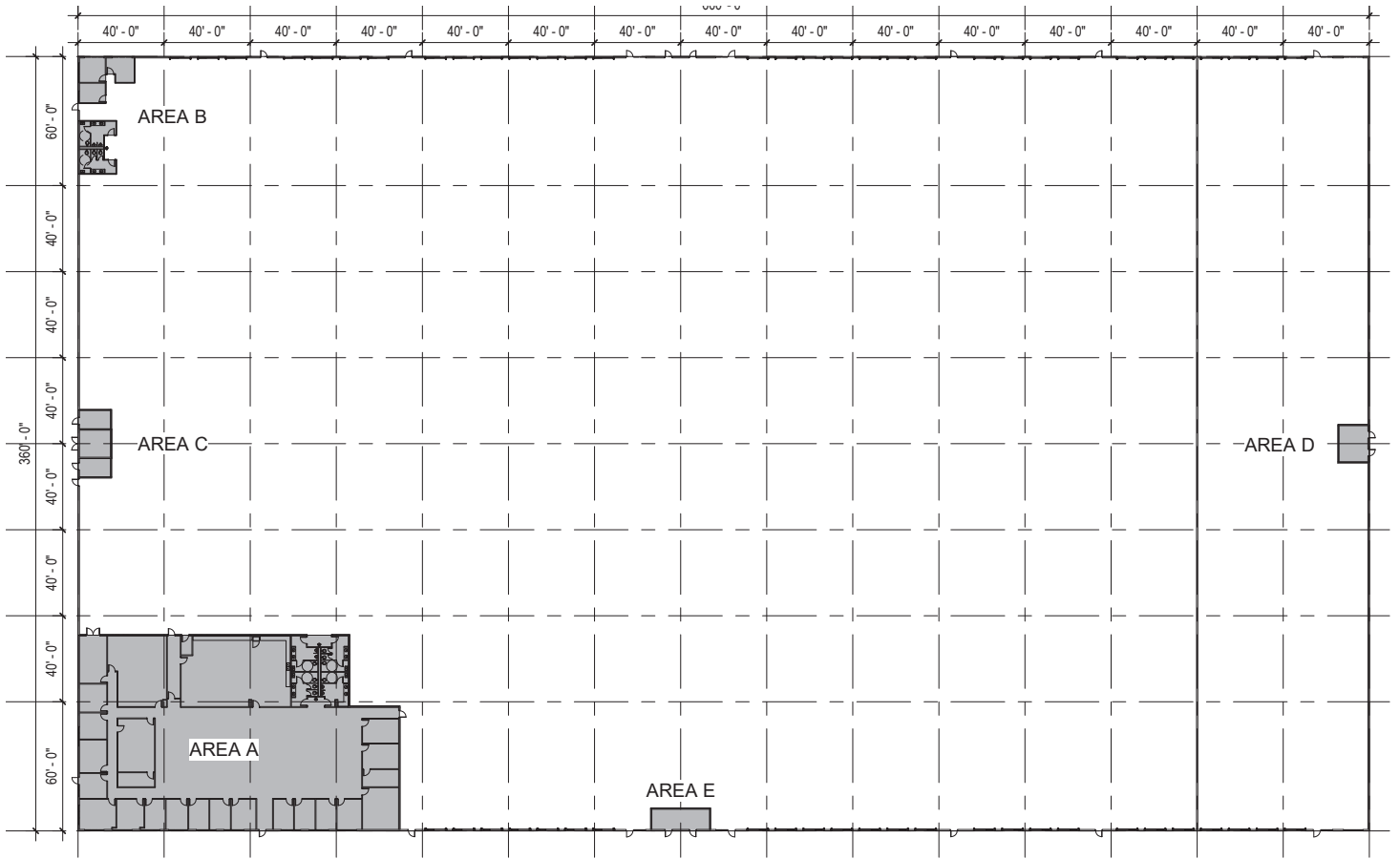
Fully Air Conditioned Warehouse

3 Phase, 480v, 2,000 amps of power

Natural gas is adjacent on Gills Dr.

PROPERTY DESCRIPTION

Available immediately, come tour Orlando's only fully air-conditioned standalone cross dock facility located in South Orlando. Visible on SR-528 (Beachline Expressway) and situated between Orange Blossom Trail and Orange Avenue. This building is a perfect location for a statewide distribution facility.



ENLARGED MAIN OFFICE PLAN - AREA A

1/16" = 1'-0"

SPEC OFFICE #1 - AS-BUILT = 12,807 SF

NOTE: FIELD VERIFY ALL DIMENSIONS