

# RETAIL SPACE FOR LEASE

Palm Bay Plaza • 4500 Dixie Hwy NE Palm Bay, FL 32905



## OFFERING SUMMARY

<b>Available SF:</b>	647 - 6,801 SF
<b>Lease Rate:</b>	\$16.00 SF/yr (\$5.18/sf NNN)
<b>Lot Size:</b>	3.27 Acres
<b>Year Built:</b>	1967
<b>Building Size:</b>	35,846 SF
<b>Zoning:</b>	HC
<b>Market:</b>	South Brevard
<b>Submarket:</b>	Palm Bay
<b>Traffic Count:</b>	25,189

## PROPERTY OVERVIEW

Introducing Palm Bay Plaza - A prime commercial real estate opportunity in Palm Bay, Florida.

Situated at 4500 Dixie Highway, this strategically located plaza is set to undergo a meticulous renovation, ensuring a modern and inviting space for businesses to thrive.

Palm Bay Plaza's renovation promises to strike the ideal balance between modern aesthetics and functionality, providing an attractive destination for both tenants and customers.

The surrounding area boasts a burgeoning community, with plans for over 800 apartment units to be developed nearby, guaranteeing a steady flow of potential clientele.

## LOCATION OVERVIEW

Directly fronts US 1 between Palm Bay Rd. and Malabar Rd in Palm Bay, FL

DISTANCES:

- 1.3 miles south of Palm Bay Rd.
- 1.9 miles north of Malabar Rd.
- 4.6 miles south of US 192
- 5.8 miles to I-95 via Palm Bay Rd.

### JEFFERY T. ROBISON, CCIM

President | Broker  
321.722.0707 X13  
jeff@teamlbr.com

### J. BLAKE ROBISON

Retail Sales And Leasing Advisor  
321.722.0707 X18  
blake@teamlbr.com

### VITOR DE SOUSA, CCIM

Retail Sales & Leasing  
321.722.0707 X15  
vitor@teamlbr.com

### Lightle Beckner Robison, Inc.

321.722.0707 • teamlbr.com  
70 W. Hibiscus Blvd.,  
Melbourne, FL 32901

Information contained herein has been obtained through sources deemed reliable but cannot be guaranteed as to its accuracy. A purchaser or lessee is expected to verify all information to his/her own satisfaction. Zoning information subject to change and not warranted. Always confirm current requirements with local governing agencies.

# ADDITIONAL PHOTOS

Palm Bay Plaza • 4500 Dixie Hwy NE Palm Bay, FL 32905



## JEFFERY T. ROBISON, CCIM

President | Broker  
321.722.0707 X13  
jeff@teamlbr.com

## J. BLAKE ROBISON

Retail Sales And Leasing Advisor  
321.722.0707 X18  
blake@teamlbr.com

## VITOR DE SOUSA, CCIM

Retail Sales & Leasing  
321.722.0707 X15  
vitor@teamlbr.com

## Lightle Beckner Robison, Inc.

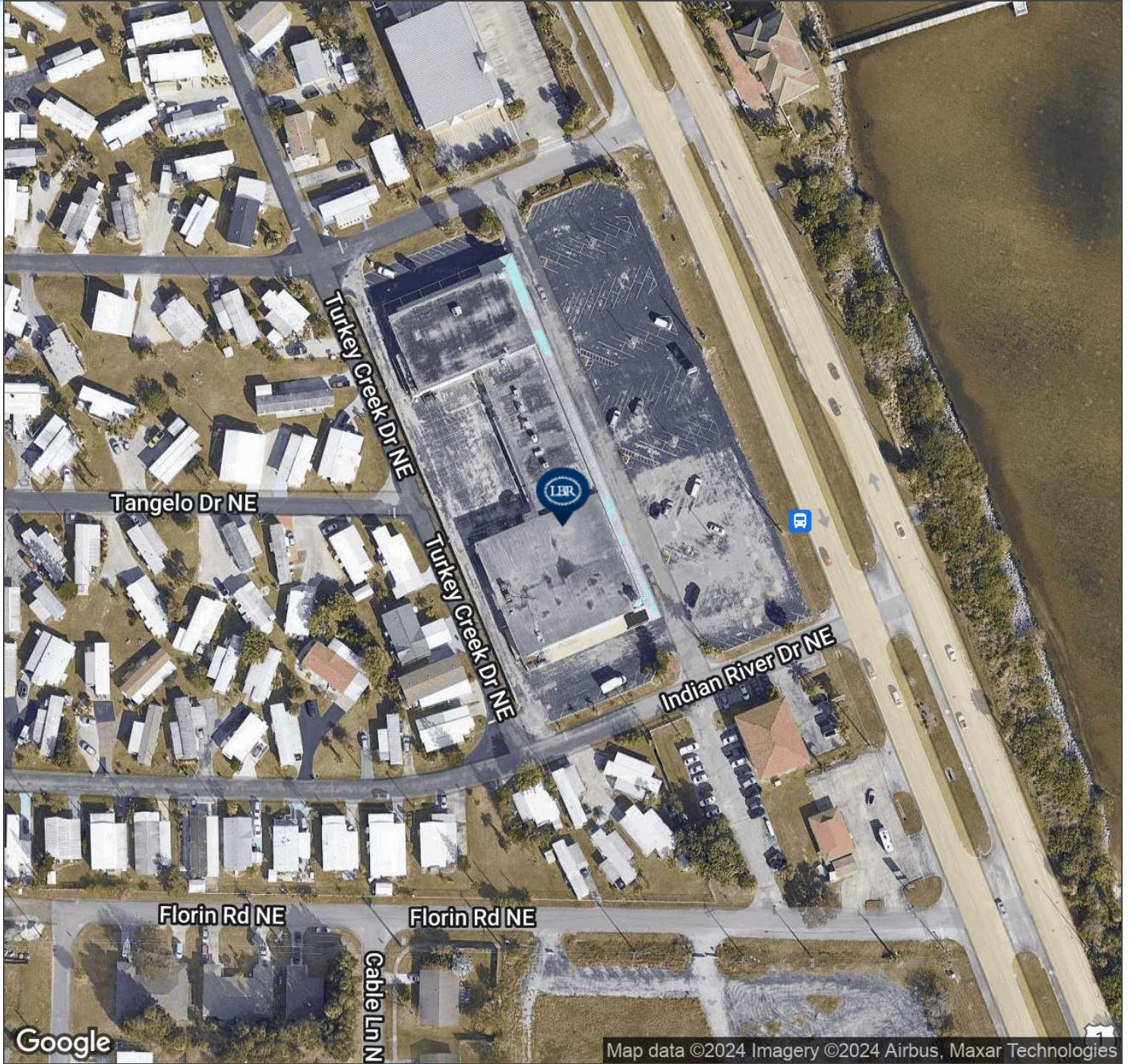
321.722.0707 • teamlbr.com  
70 W. Hibiscus Blvd.,  
Melbourne, FL 32901

Information contained herein has been obtained through sources deemed reliable but cannot be guaranteed as to its accuracy. A purchaser or lessee is expected to verify all information to his/her own satisfaction. Zoning information subject to change and not warranted. Always confirm current requirements with local governing agencies.



# AERIAL MAP

Palm Bay Plaza • 4500 Dixie Hwy NE Palm Bay, FL 32905



**JEFFERY T. ROBISON, CCIM**

President | Broker  
321.722.0707 X13  
jeff@teamlbr.com

**J. BLAKE ROBISON**

Retail Sales And Leasing Advisor  
321.722.0707 X18  
blake@teamlbr.com

**VITOR DE SOUSA, CCIM**

Retail Sales & Leasing  
321.722.0707 X15  
vitor@teamlbr.com

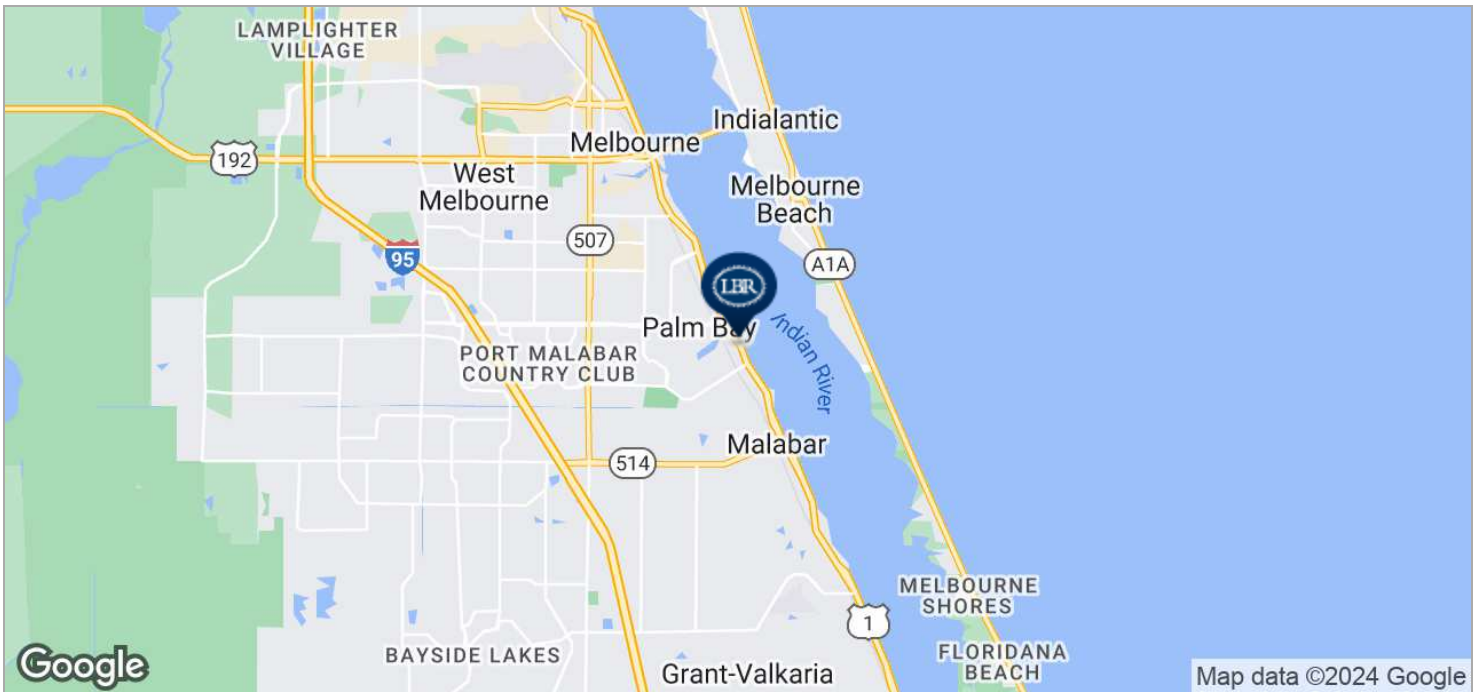
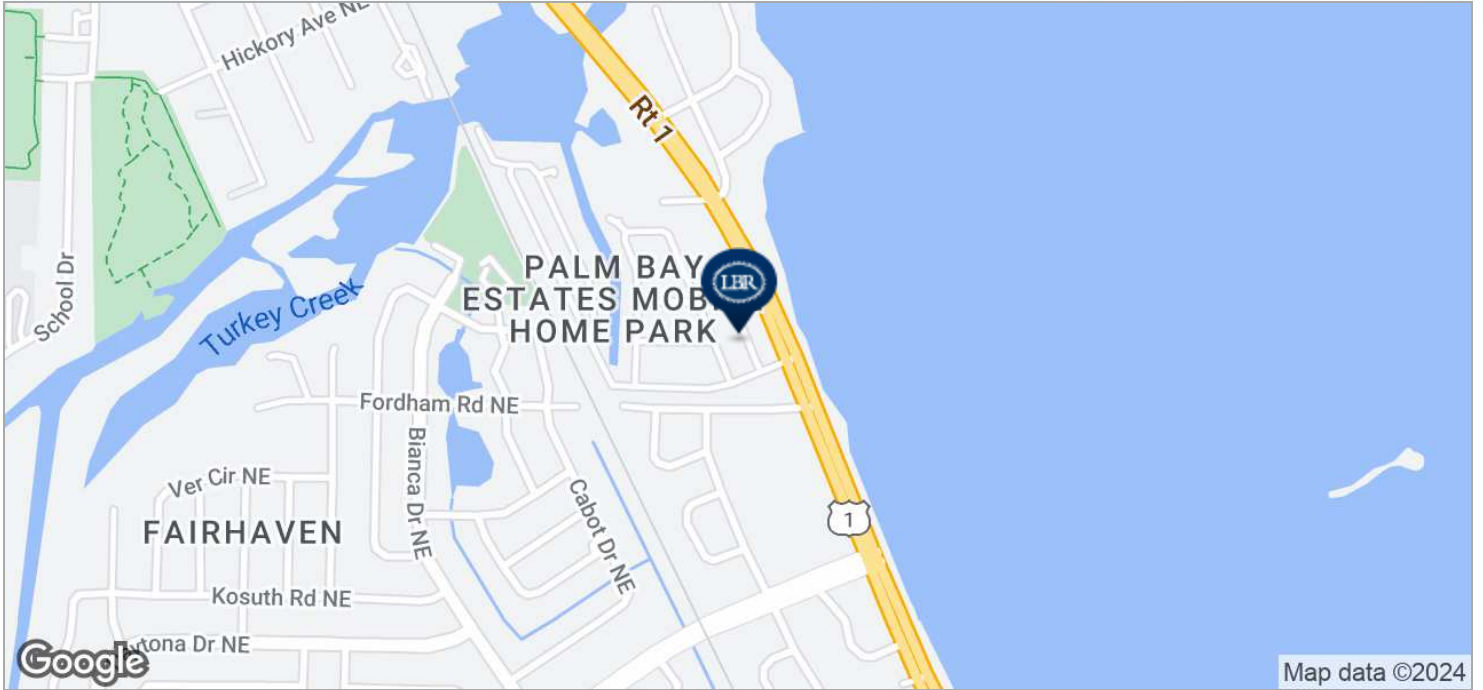
**Lightle Beckner Robison, Inc.**

321.722.0707 • teamlbr.com  
70 W. Hibiscus Blvd.,  
Melbourne, FL 32901

Information contained herein has been obtained through sources deemed reliable but cannot be guaranteed as to its accuracy. A purchaser or lessee is expected to verify all information to his/her own satisfaction. Zoning information subject to change and not warranted. Always confirm current requirements with local governing agencies.

# LOCATION MAPS

Palm Bay Plaza • 4500 Dixie Hwy NE Palm Bay, FL 32905



**JEFFERY T. ROBISON, CCIM**

President | Broker  
321.722.0707 X13  
jeff@teamlbr.com

**J. BLAKE ROBISON**

Retail Sales And Leasing Advisor  
321.722.0707 X18  
blake@teamlbr.com

**VITOR DE SOUSA, CCIM**

Retail Sales & Leasing  
321.722.0707 X15  
vitor@teamlbr.com

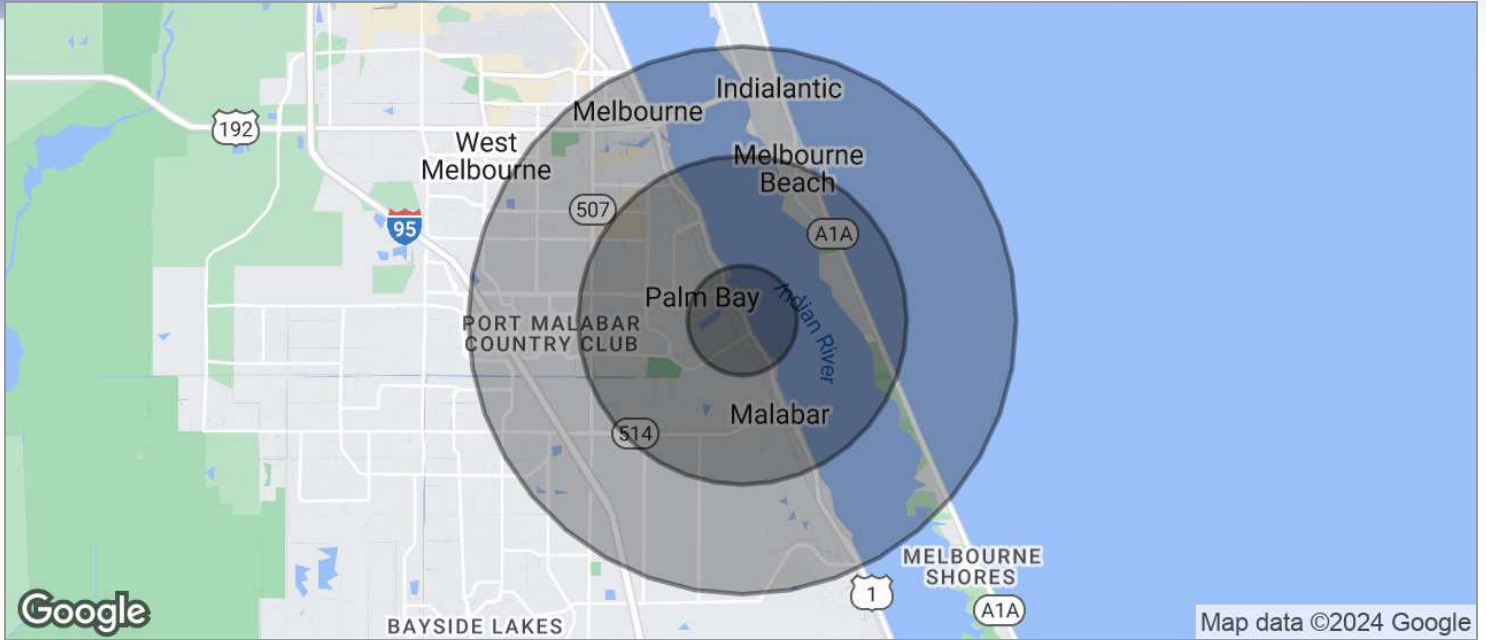
**Lightle Beckner Robison, Inc.**

321.722.0707 • teamlbr.com  
70 W. Hibiscus Blvd.,  
Melbourne, FL 32901

Information contained herein has been obtained through sources deemed reliable but cannot be guaranteed as to its accuracy. A purchaser or lessee is expected to verify all information to his/her own satisfaction. Zoning information subject to change and not warranted. Always confirm current requirements with local governing agencies.

# DEMOGRAPHICS MAP

Palm Bay Plaza • 4500 Dixie Hwy NE Palm Bay, FL 32905



POPULATION	1 MILE	3 MILES	5 MILES
TOTAL POPULATION	4,776	28,678	74,143
MEDIAN AGE	47.9	47.4	44.4
MEDIAN AGE (MALE)	47.3	45.2	41.2
MEDIAN AGE (FEMALE)	51.1	49.7	47.1
HOUSEHOLDS & INCOME	1 MILE	3 MILES	5 MILES
TOTAL HOUSEHOLDS	1,957	12,705	31,360
# OF PERSONS PER HH	2.4	2.3	2.4
AVERAGE HH INCOME	\$57,775	\$59,919	\$58,989
AVERAGE HOUSE VALUE	\$337,451	\$274,163	\$224,638

\* Demographic data derived from 2020 ACS - US Census

## JEFFERY T. ROBISON, CCIM

President | Broker  
321.722.0707 X13  
jeff@teamlbr.com

## J. BLAKE ROBISON

Retail Sales And Leasing Advisor  
321.722.0707 X18  
blake@teamlbr.com

## VITOR DE SOUSA, CCIM

Retail Sales & Leasing  
321.722.0707 X15  
vitor@teamlbr.com

## Lightle Beckner Robison, Inc.

321.722.0707 • teamlbr.com  
70 W. Hibiscus Blvd.,  
Melbourne, FL 32901

Information contained herein has been obtained through sources deemed reliable but cannot be guaranteed as to its accuracy. A purchaser or lessee is expected to verify all information to his/her own satisfaction. Zoning information subject to change and not warranted. Always confirm current requirements with local governing agencies.