

**FULL FLOOR  
AVAILABLE!**



**VIEW 3D TOURS!**



For Lease  
**±1,007-8,234 SF**  
**PGA Office Space**

## 4400 PGA Boulevard

Palm Beach Gardens, FL 33410

### Property Features

- Excellent access and fantastic amenities in the heart of Palm Beach Gardens
- Great, full-service rates (electric and nightly cleaning included)
- 4-story parking garage with enclosed bridge access
- Attached Embassy Suites hotel with shared, lush and tranquil atrium lobby



Great location with  
direct I-95 access



Abundant surface  
and garage parking



Immediate  
availability



Highly visible  
monument signage  
for full floor tenant

For more information

**Jason L. Sundook, SIOR**

Principal | [jsundook@mhcreal.com](mailto:jsundook@mhcreal.com)

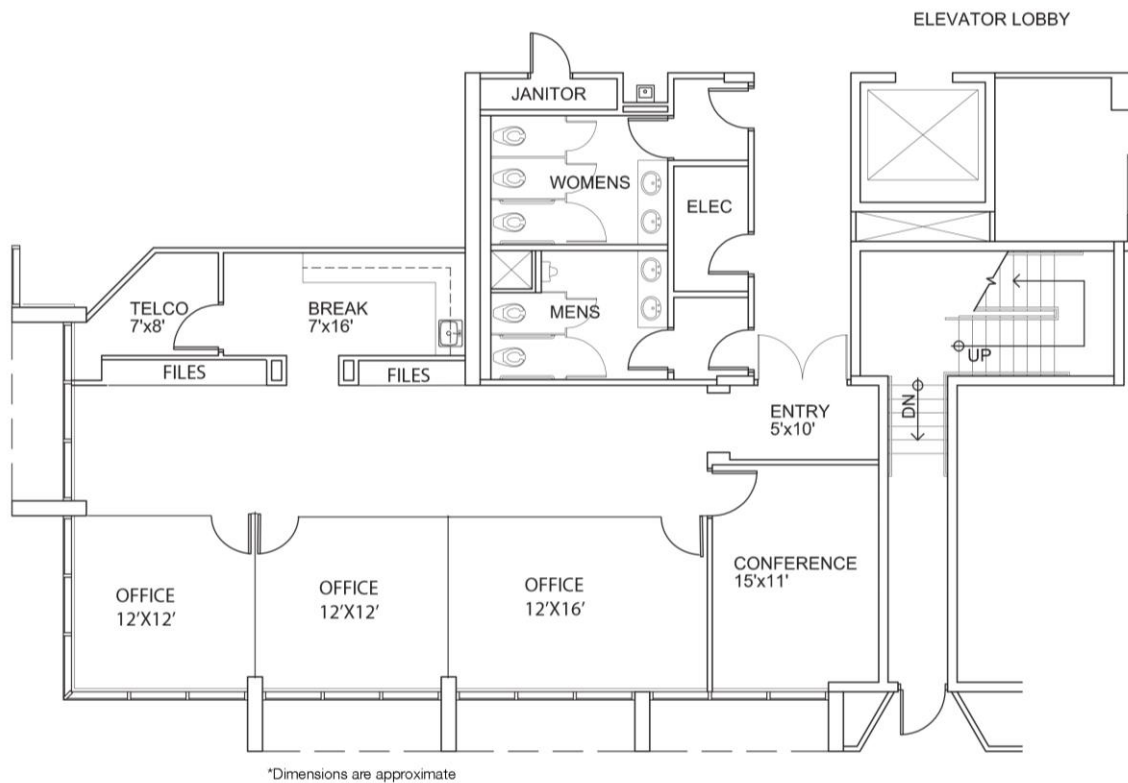
**Patrick Almand**

Associate | [palmand@mhcreal.com](mailto:palmand@mhcreal.com)



FOR LEASE: 4400 PGA BOULEVARD, PALM BEACH GARDENS

## Move-In Ready Ground-Floor Office Space



**Suite 102** 1,685 SF

- Ground floor
- Floor-to-ceiling windows
- High ceilings
- Move-in ready



NO WARRANTY OR REPRESENTATION, EXPRESS OR IMPLIED, IS MADE AS TO THE ACCURACY OF THE INFORMATION CONTAINED HEREIN, AND THE SAME IS SUBMITTED SUBJECT TO ERRORS, OMISSIONS, CHANGE OF PRICE, OR WITHDRAWAL WITHOUT NOTICE.



561 471 8000



1601 Forum Place, Suite 700  
West Palm Beach, FL 33401

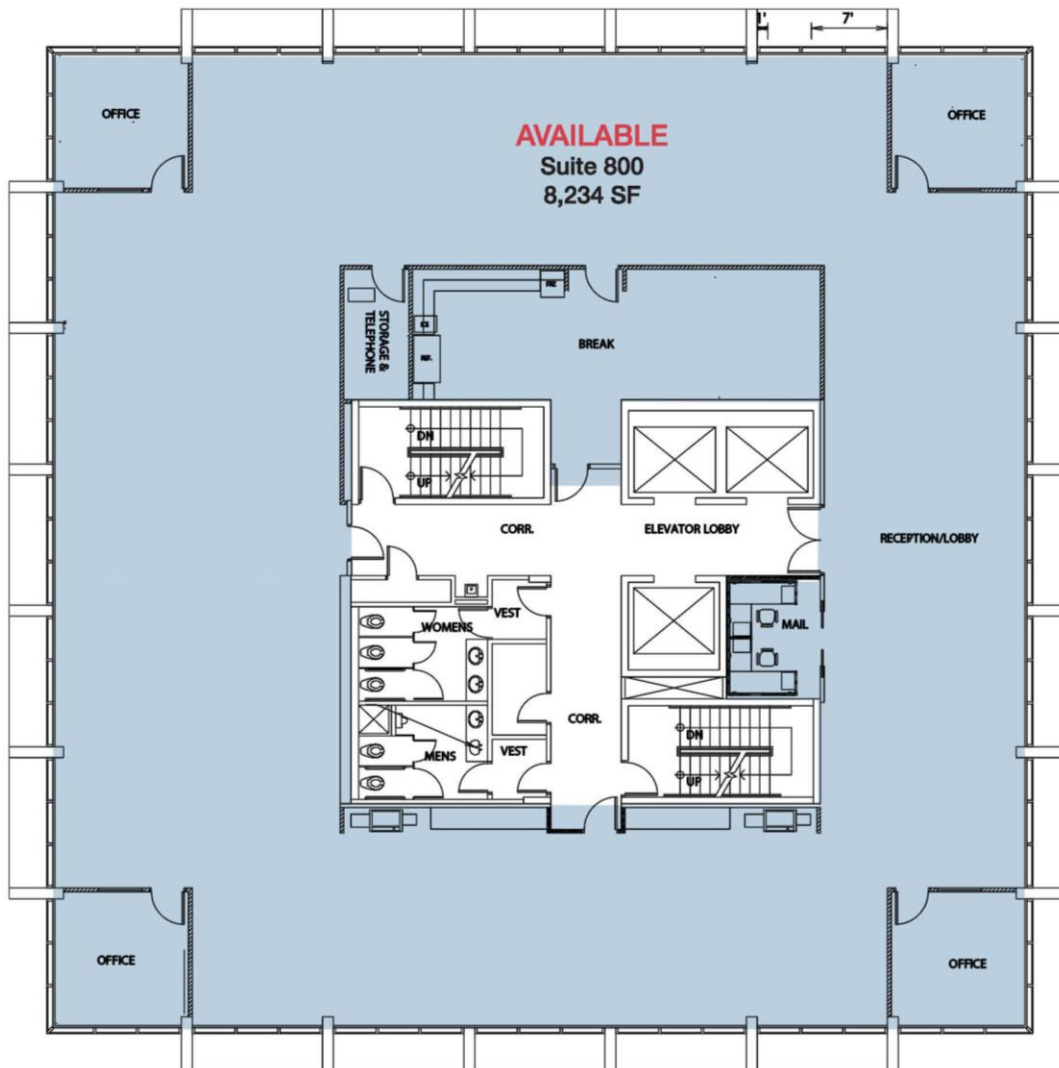


[www.4400PgaOfficeSpace.com](http://www.4400PgaOfficeSpace.com)  
[www.mhcreal.com](http://www.mhcreal.com)

FOR LEASE: 4400 PGA BOULEVARD, PALM BEACH GARDENS

## Full Floor with Panoramic PGA Views

Suite 800 8,234 SF



\*Not to scale. Subject to error.

- Full floor available
- Ideal for corporate headquarters
- Fantastic views of Palm Beach Gardens



CLICK HERE FOR  
3D TOUR!

