

# Survey of land to the West of the Subject Property

THE OWNER OF THE LAND SHOWN ON THIS PLAN AND WHO IN PERSON OR THROUGH A DELEGATED AGENT, ACKNOWLEDGES THAT THIS PLAN WAS MADE FROM AN ACTUAL SURVEY AND DEPICTS TO THE USE OF THE PUBLIC FOR THE PURPOSES OF THE PARKS, WATER COURSES, DRAINS, STREETS, ALLEYS, PUBLIC PLACES THEREON SHOWN FOR THE PURPOSES AND CONVEYANCE HEREIN.

NATIONAL HOMES DEVELOPMENT COMPANY OF GEORGIA  
 BY *[Signature]*  
 PLANNING DIRECTOR

I hereby certify that the subdivision plat shown hereon has been found to comply with the Master Plan and the Cobb County Subdivision and Zoning Regulations. Dated, this \_\_\_\_\_ day of \_\_\_\_\_, 1970.

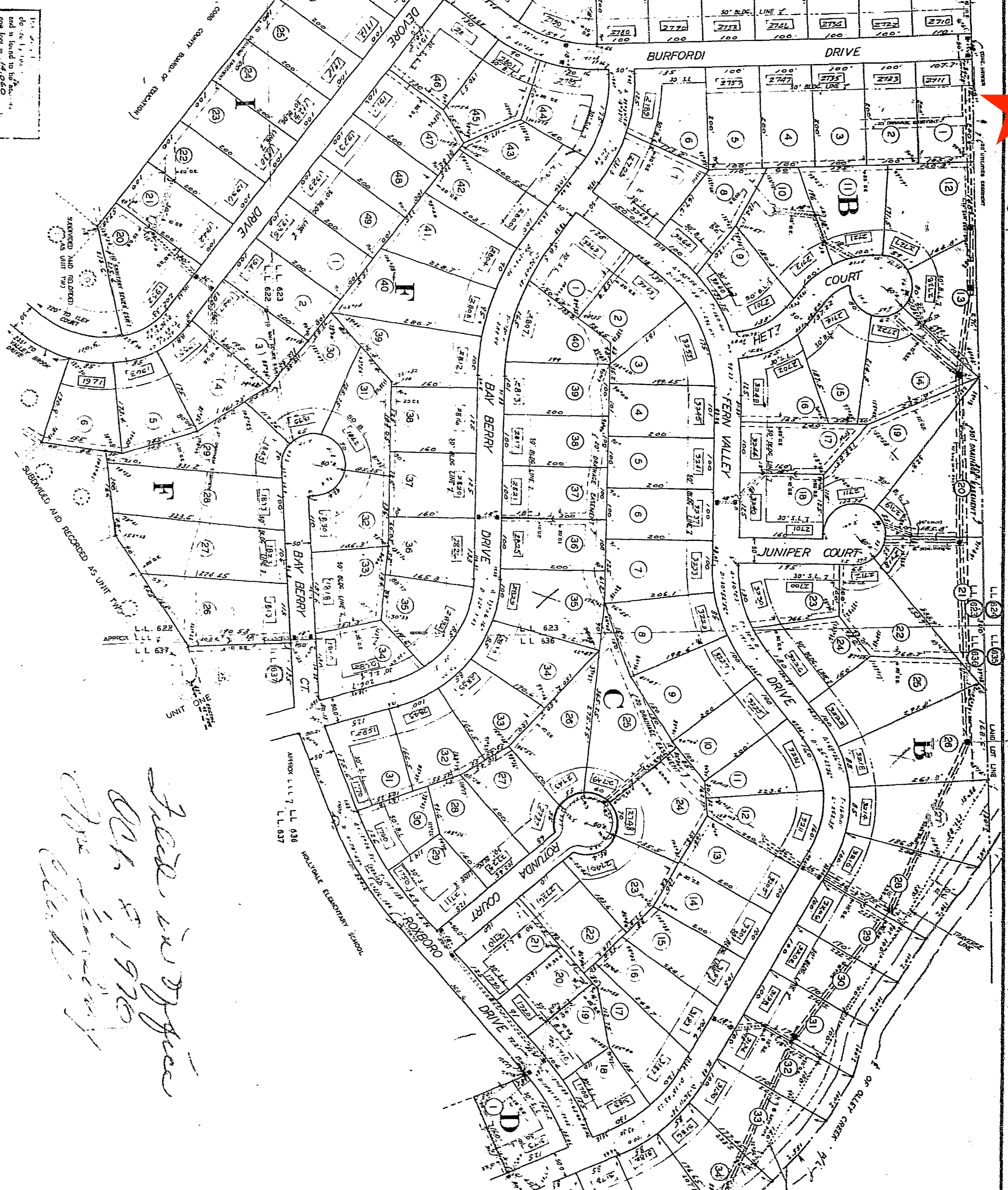
*[Signature]*  
 PLANNING DIRECTOR

CERTIFICATION OF THE LOCAL COMMISSION:

THIS PLAN HAS BEEN SUBMITTED TO AND CONSIDERED BY THE BOARD OF COMMISSIONERS OF COBB COUNTY, GEORGIA AND IS HEREBY APPROVED SUBJECT TO THE ACCEPTANCE OF ALL DESIGNATED PUBLIC UTILITIES AND EASEMENTS AND TO THE PROTECTIVE COVENANTS APPLICABLE AND SHOWN HEREON.

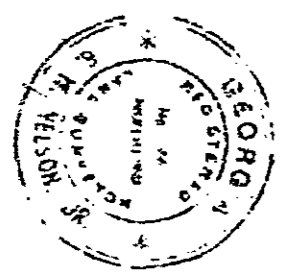
DATE: \_\_\_\_\_ DAY OF \_\_\_\_\_, 1970.

CHARLES W. BARRETT CIVILIAN, BOARD OF COMMISSIONERS, COBB COUNTY, GEORGIA.



THIS PLAT REVISED JUNE 16, 1970 TO SHOW SAN SEWER OUTFALL LINE AS CONSTRUCTED & STORM DRAIN LINE ON LOT 25 BLOCK C. THIS PLAT SUPERSEDES PLAT RECORDED IN BOOK PAGE 189 COBB COUNTY RECORDS.

THIS PLAT RECORDED IN PLAT BOOK \_\_\_\_\_ PAGE \_\_\_\_\_ DATE \_\_\_\_\_ COBB COUNTY RECORDS.



It is hereby certified that this plat complies with the Master Plan and the Cobb County Subdivision and Zoning Regulations. Dated, this \_\_\_\_\_ day of \_\_\_\_\_, 1970.

*[Signature]*  
 PLANNING DIRECTOR

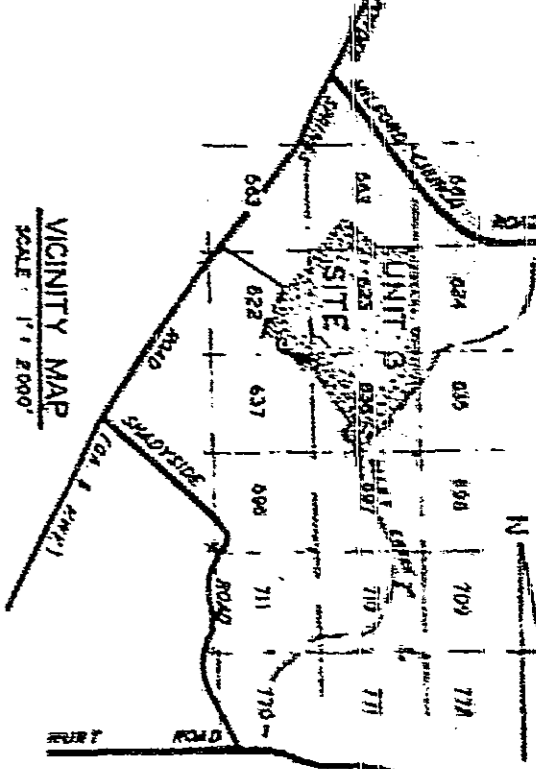
*See in office Oct 8 1970 for closing*

## HOLLYDALE UNIT III

LAND LOTS 562, 622, 623, 636, 637 & 697-10TH DISTRICT 2ND SECT. COBB COUNTY, GEORGIA.

SCALE IN FEET

NATIONAL HOMES DEVELOPMENT COMPANY OF GEORGIA, INC. OWNER.



CERTIFICATION OF LOCAL INSURANCE:

THIS PLAN HAS BEEN SUBMITTED TO AND CONSIDERED BY THE COUNTY ENGINEER, PUBLIC UTILITIES AND OTHER EMPLOYERS AS AN ACCEPTABLE MANNER AND ACCORDING TO COBB COUNTY REGULATIONS. DATED, THIS \_\_\_\_\_ DAY OF \_\_\_\_\_, 1970.

*[Signature]*  
 G.W. WILSON, JR., REGISTERED PROFESSIONAL LAND SURVEYOR, No. 9100.

CERTIFICATION OF COUNTY ENGINEER:

I HEREBY CERTIFY THAT THE PLAN, SHOWS AND DESCRIBED HEREON IS A TRUE AND CORRECT SURVEY MADE ON THE GROUND UNDER MY SUPERVISION AND THAT THE SAME IS ACCURATE AND SUFFICIENT AS REQUIRED BY THE COBB COUNTY SUBDIVISION AND ZONING REGULATIONS. THE COUNTY ENGINEER AND THE COUNTY COMMISSION.

*[Signature]*  
 G.W. WILSON, JR., REGISTERED PROFESSIONAL LAND SURVEYOR, No. 9100.

REVISED JUNE 16, 1970

OWNER: NATIONAL HOMES DEVELOPMENT COMPANY OF GEORGIA, INC.

DATE: \_\_\_\_\_ DAY OF \_\_\_\_\_, 1970.

PLANNING DIRECTOR: *[Signature]*

REGISTERED PROFESSIONAL LAND SURVEYOR: G.W. WILSON, JR., No. 9100.