

HARBOR CROSSING - RETAIL CENTER

5275 US-1 | Vero Beach, FL 32967



FOR LEASE OR BTS - NEW RETAIL CENTER

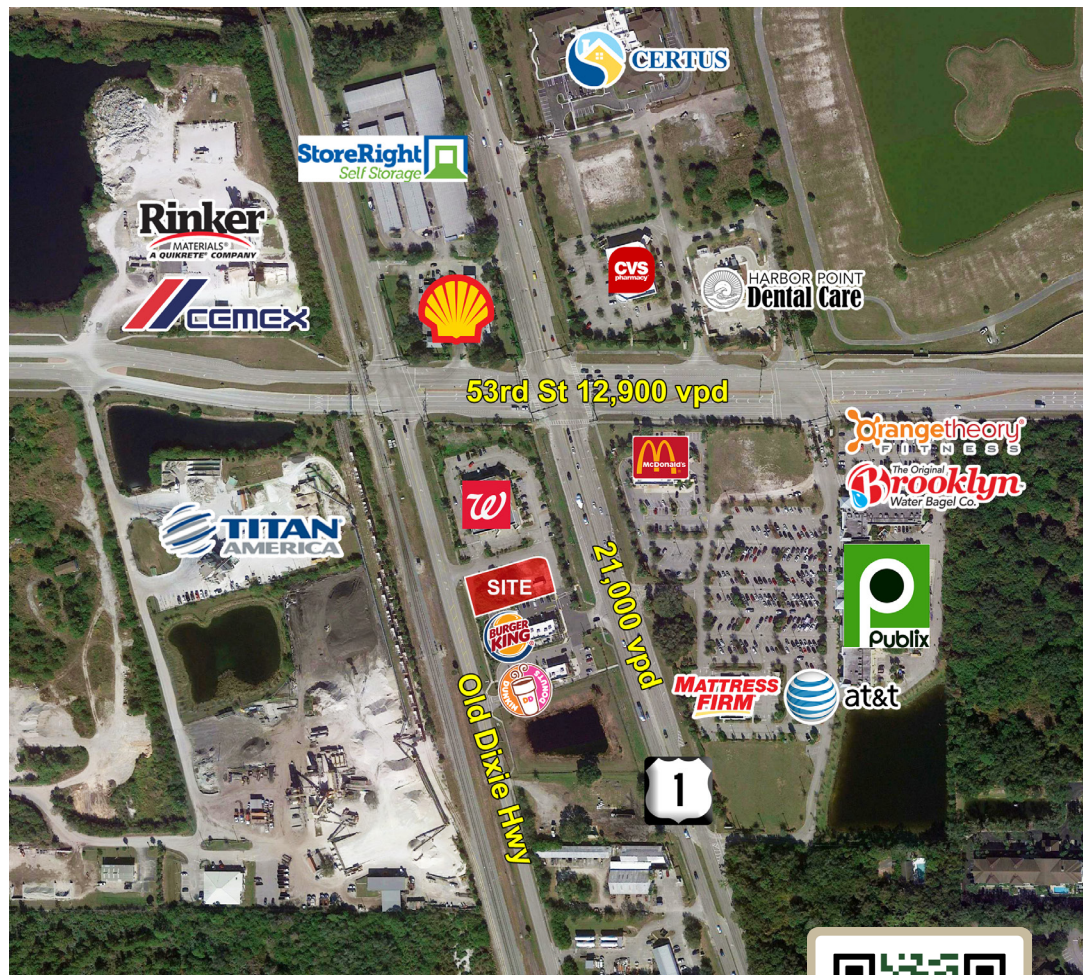


HIGHLIGHTS

- 0.70 Acre outparcel.
- Up to 6,400 SF available.
- Located adjacent to a new Walgreens, Burger King and Dunkin Donuts.
- Adjacent to high volume sales Publix.
- Strong demographics and household income \pm \$105,700.
- Located in a fast growing area of Vero Beach, near high-end new home developments.

Traffic Counts

US Hwy 1: \pm 21,000 vpd

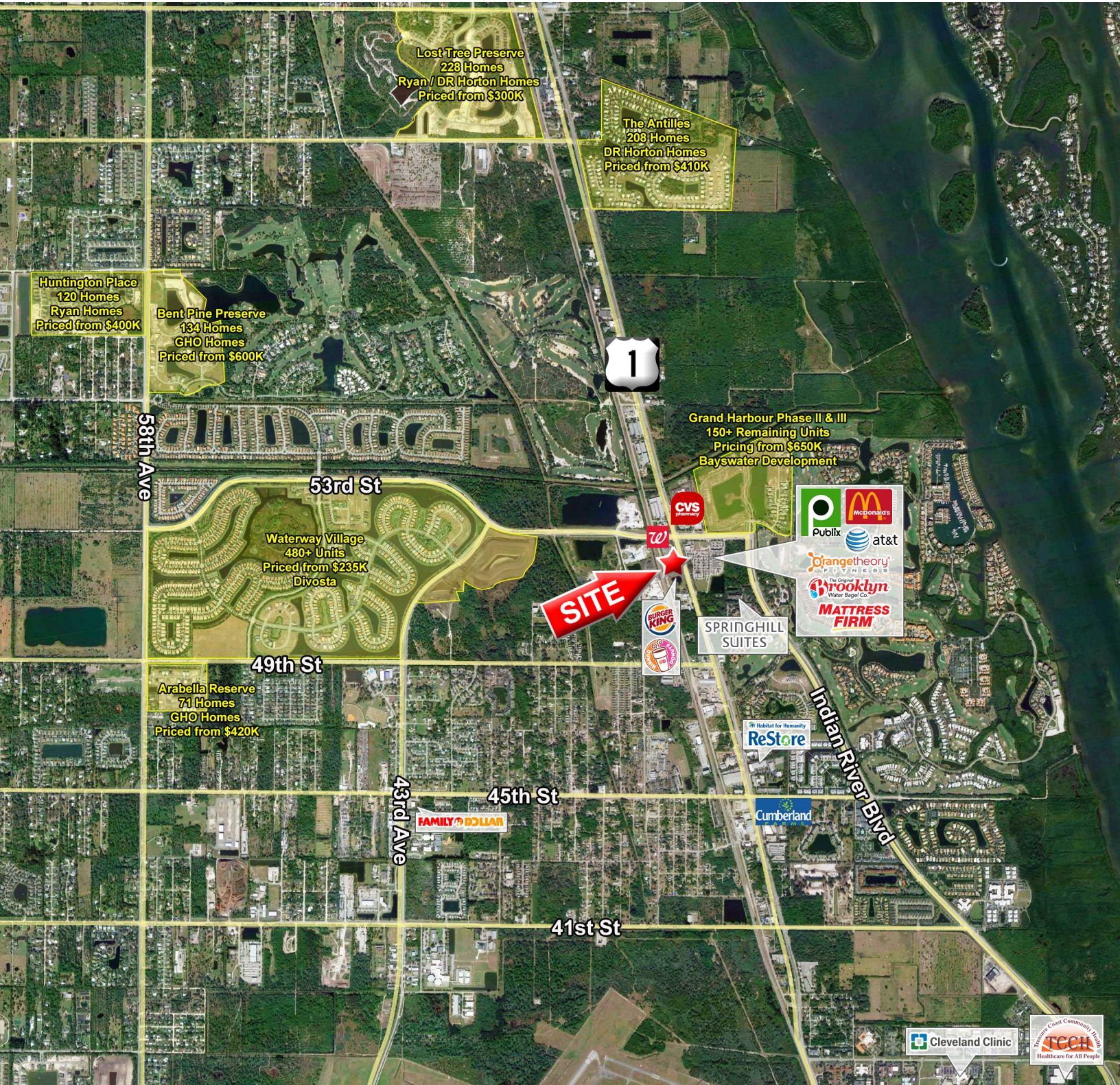


MONTE MITCHELL | Monte@FornessProperties.com | 407.988.0073
www.FornessProperties.com | Licensed Real Estate Broker



HARBOR CROSSING - RETAIL CENTER

5275 US-1 | Vero Beach, FL 32967



Demographics	3 Mile	5 Miles	7 Miles
Population	3,039	21,433	56,446
Household Income	\$98,503	\$119,665	\$102,866
Median Age	55.6	57.1	58.0
Daytime Employees	2,812	16,100	45,667

HARBOR CROSSING - RETAIL CENTER

5275 US-1 | Vero Beach, FL 32967

