

FOR SUBLEASE
370 EAGLES LANDING
LAKELAND, FL 33810



PROPERTY HIGHLIGHTS

- Available SF: 15,000 SF
- Office SF: ± 915 SF
- Doors: 5 dock-high, 1 drive-in ramp
- Clear Height: 30'
- Fire Protection: ESFR
- **Sublease** Expires: 6/30/2025
- Occupy space within 30 Days
- Potential to keep existing racking and office furniture

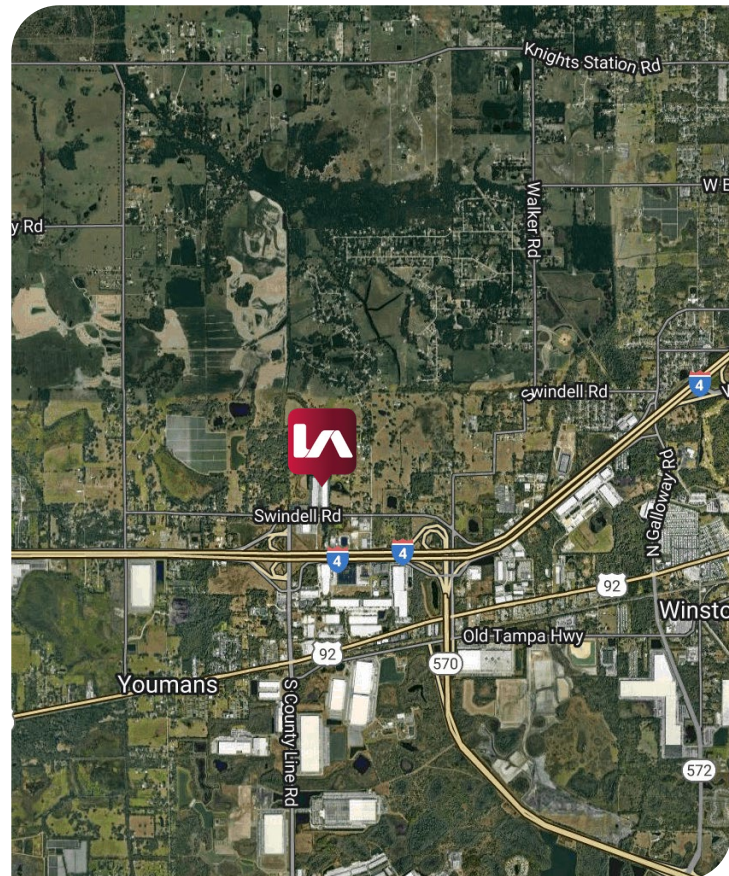
Sublease Rate: \$7.85/SF NNN

Operating Expense: \$2.80/SF

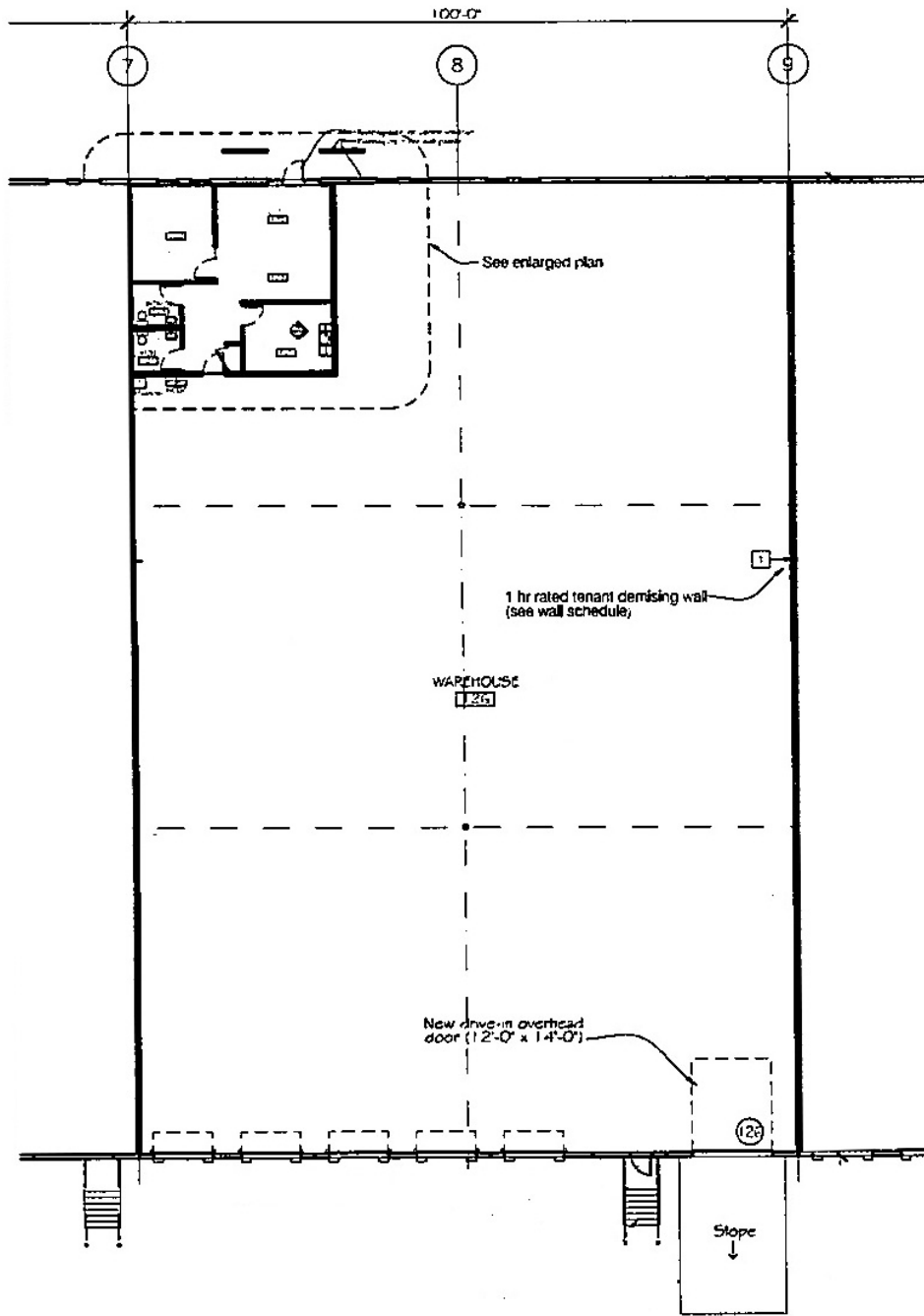
Leasing Contact:

Ed Killmer
Founding Principal
ekillmer@lee-associates.com
D 813.309.2805

Christopher "CJ" Griffith
Senior Associate
cgriffith@lee-associates.com
D 321.281.8508



370 EAGLES LANDING DRIVE
LAKELAND, FL 33810



Leasing Contact:

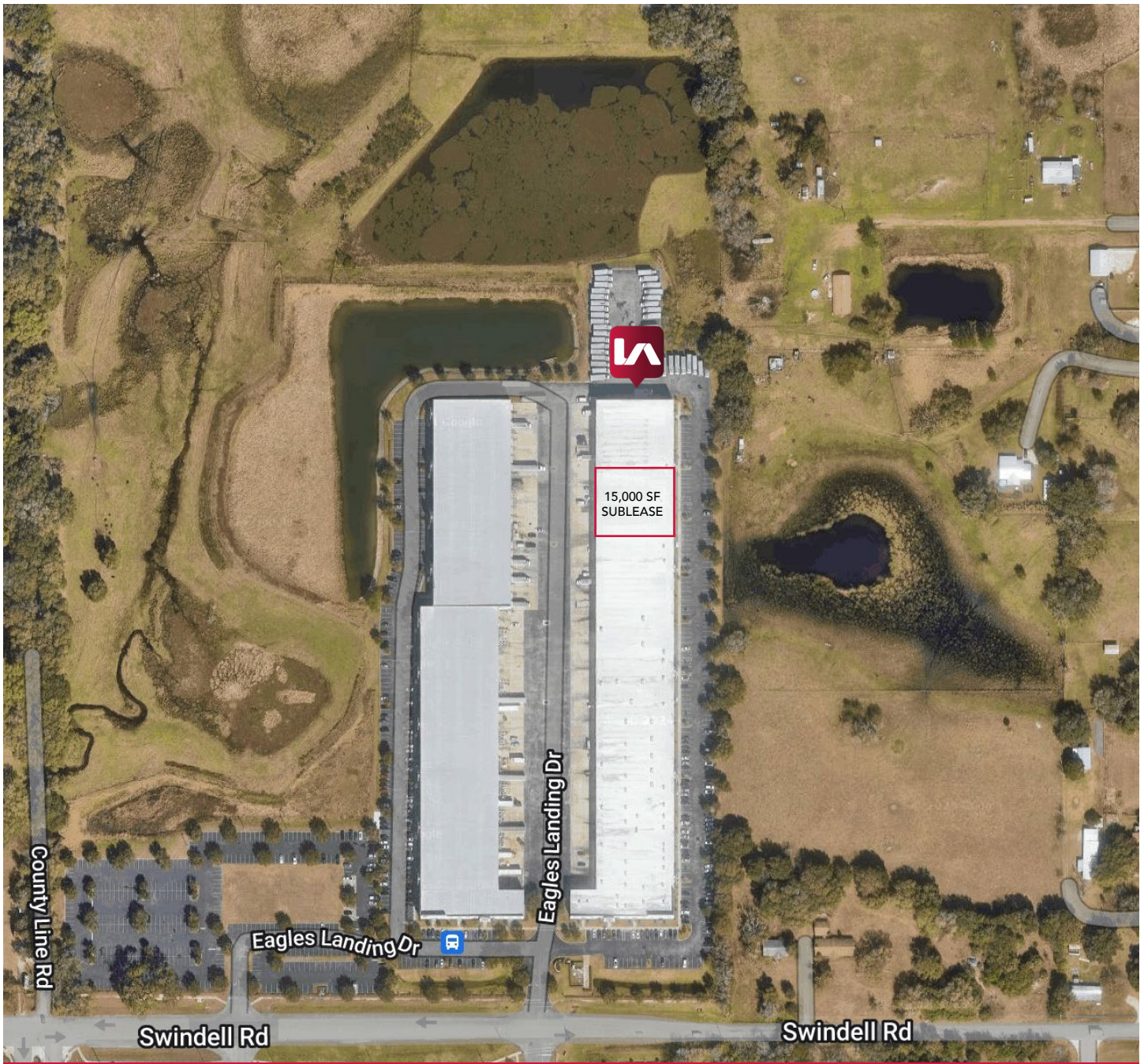
Ed Killmer
Founding Principal
ekillmer@lee-associates.com
D 813.309.2805

Christopher "CJ" Griffith
Senior Associate
cgriffith@lee-associates.com
D 321.281.8508

All information furnished regarding property for sale, rental or financing is from sources deemed reliable, but no warranty or representation is made to the accuracy thereof and same is submitted to errors, omissions, change of price, rental or other conditions prior to sale, lease or financing or withdrawal without notice. No liability of any kind is to be imposed on the broker herein.

370 EAGLES LANDING DRIVE

LAKELAND, FL 33810



Leasing Contact:

Ed Killmer
Founding Principal
ekillmer@lee-associates.com
D 813.309.2805

Christopher "CJ" Griffith
Senior Associate
cgriffith@lee-associates.com
D 321.281.8508

All information furnished regarding property for sale, rental or financing is from sources deemed reliable, but no warranty or representation is made to the accuracy thereof and same is submitted to errors, omissions, change of price, rental or other conditions prior to sale, lease or financing or withdrawal without notice. No liability of any kind is to be imposed on the broker herein.