

4551 PLEASANT HILL ROAD | KISSIMMEE, FL 34759

FOR LEASE



AVAILABLE JANUARY 1, 2025

ECONOMIC DATA

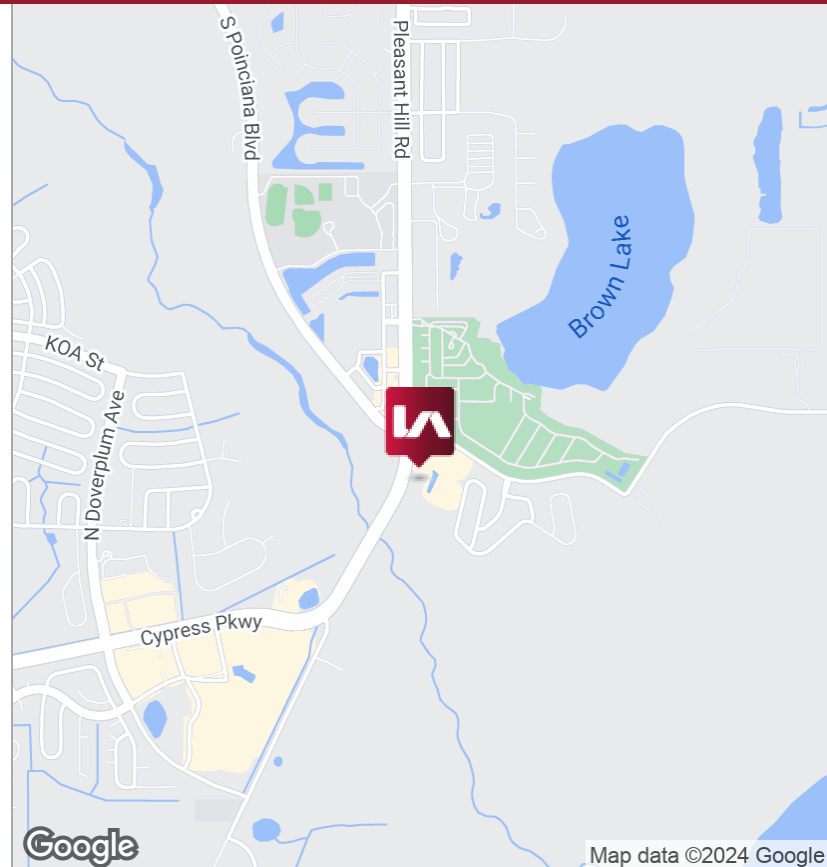
Lease Rate: \$28.00 SF/yr (NNN)

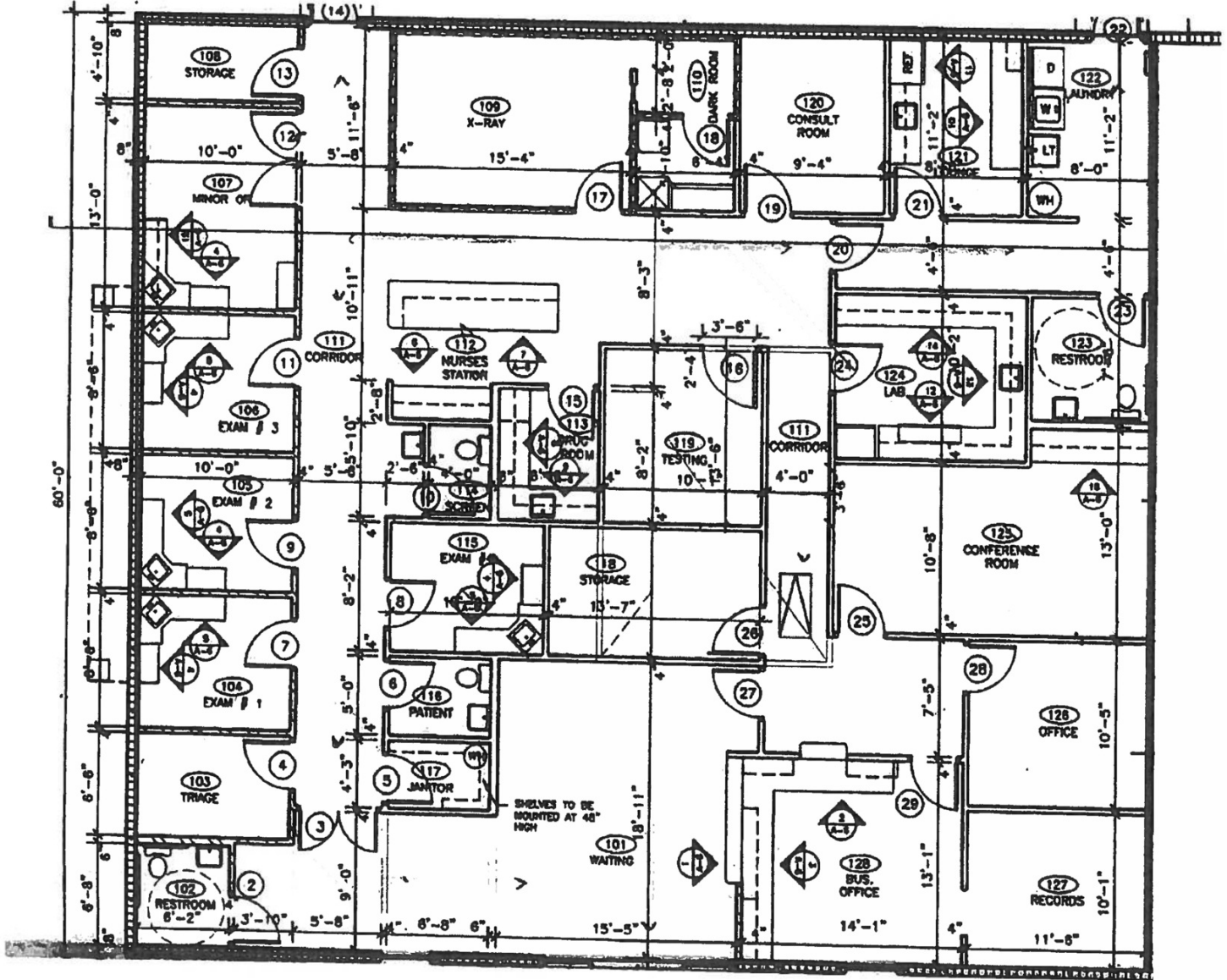
CAM: \$8.56/SF

LISTING DATA

Available SF: 3,892 SF

Comments: Multi-tenant medical building with a prominent location on Pleasant Hill Rd just south of the Poinciana Blvd intersection offering ease of ingress/egress with visibility. Space is currently operated as a Primary Clinic offering exam rooms, procedure room with a lab and traditional x-ray. Monument & Fascia signage is available. Join Osceola OB/GYN & Florida Lung & Asthma.





3,892 SF

