

For Lease

# Office Condo

2,500 SF | \$20.00 / SF



## Williamson Executive Park

104 La Costa Lane, Unit 120, Daytona Beach, Florida 32114

### Property Highlights

- Location, location, location!
- Exceptional spot at the intersection of Dunn Avenue and Williamson Blvd in the Williamson Executive Park
- Approximately 2,500 SF
- Professional/medical office space in great condition
- Immediate occupancy
- Outstanding access to Williamson Blvd, International Speedway Blvd (US Hwy 17-92), LPGA Blvd & I-95
- Surrounded by dense residential development and close to Halifax Health Hospital



**Lease Rate: \$20.00 / SF MG**

For more information

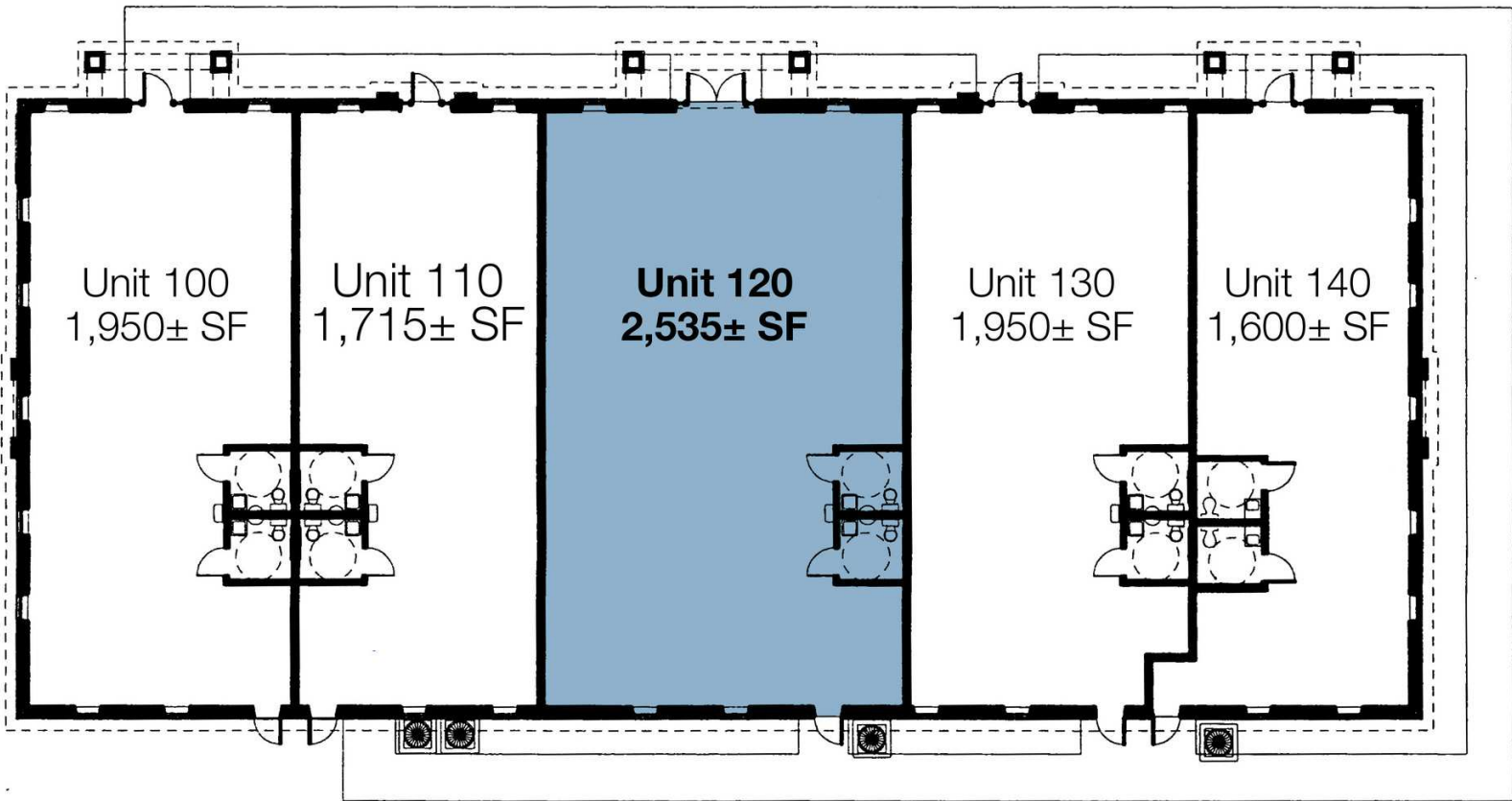
**Brad Gifford**

O: 386 506 0037

[bgifford@realvest.com](mailto:bgifford@realvest.com)

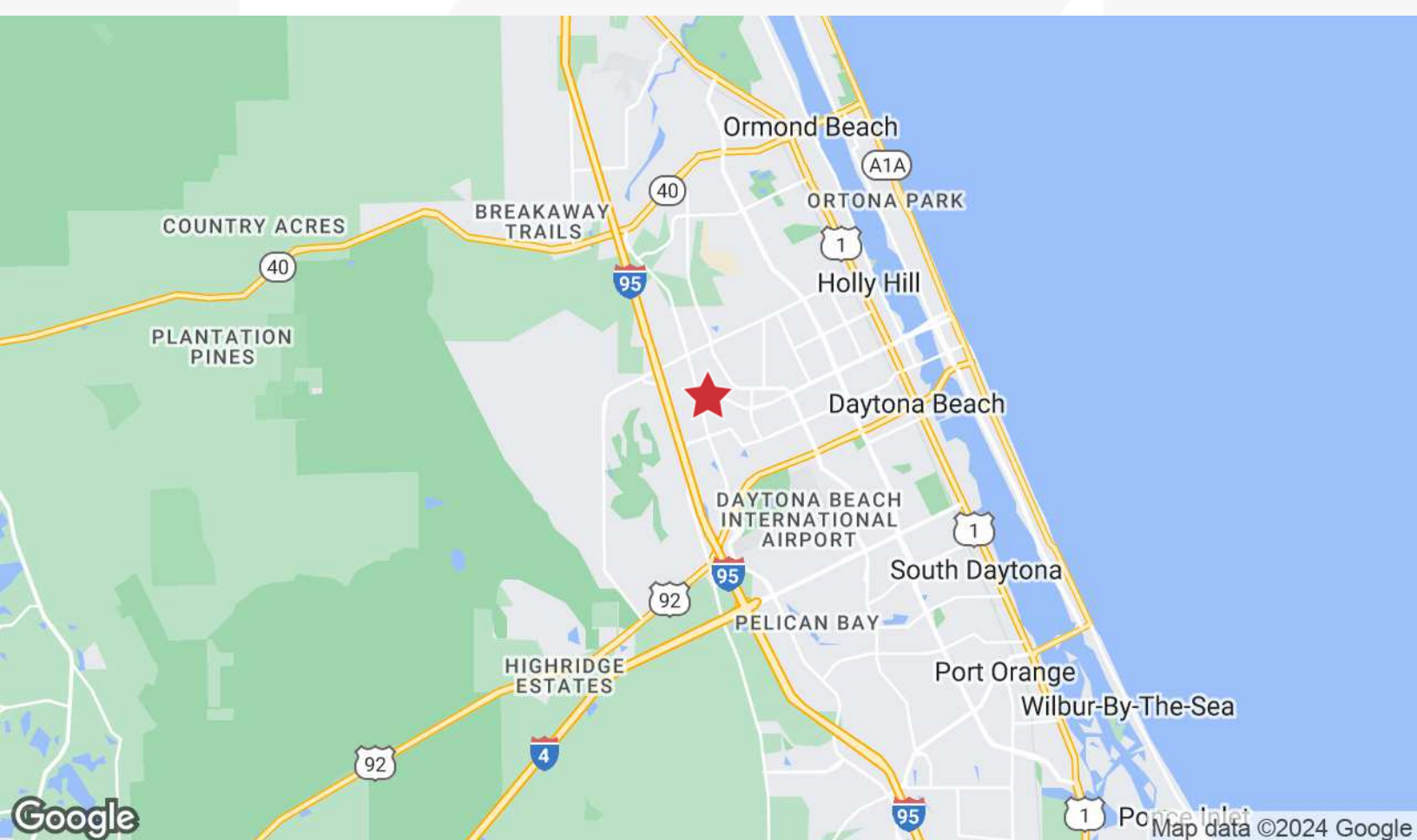
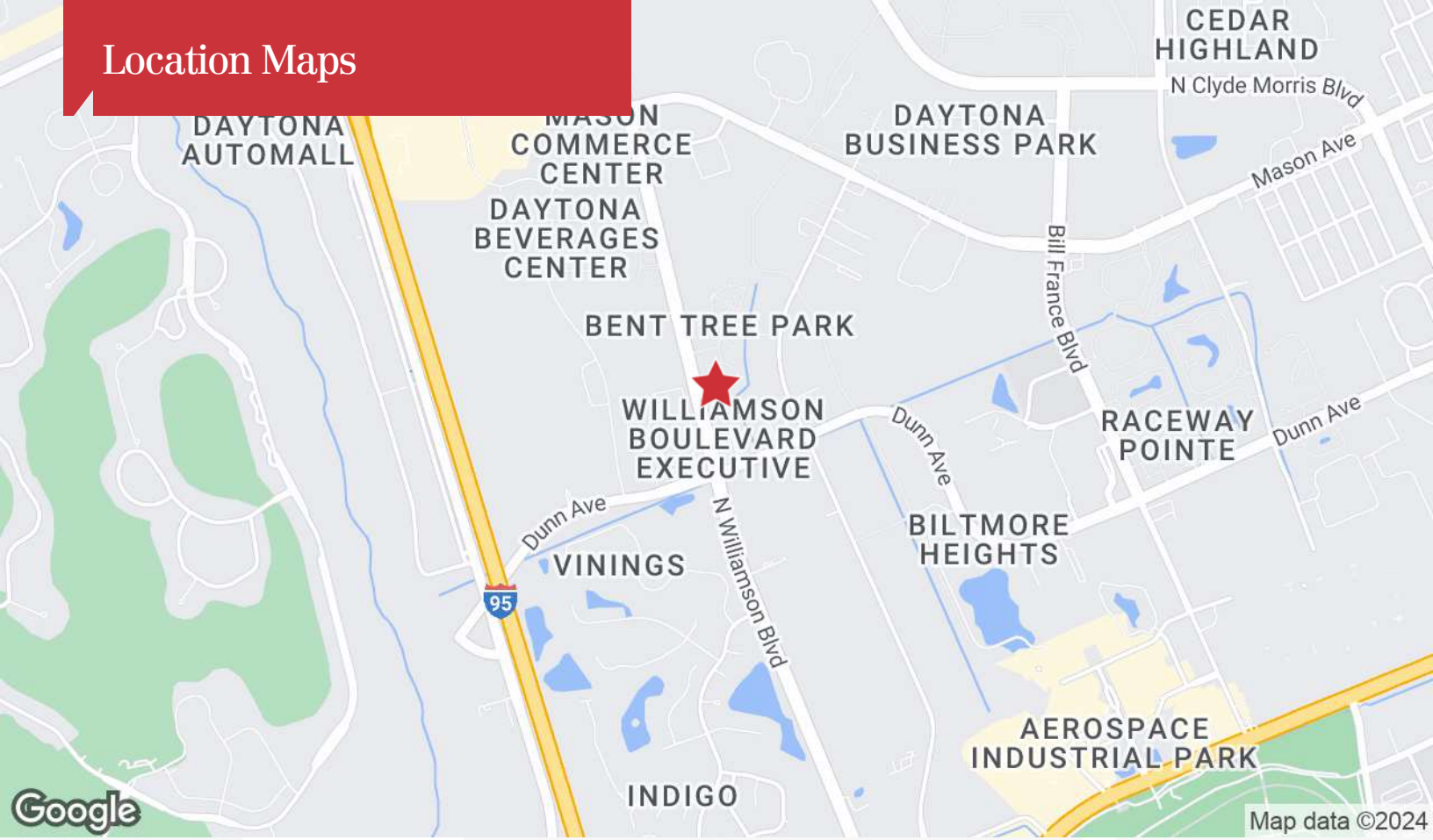


# Building Photo & Floor Plan

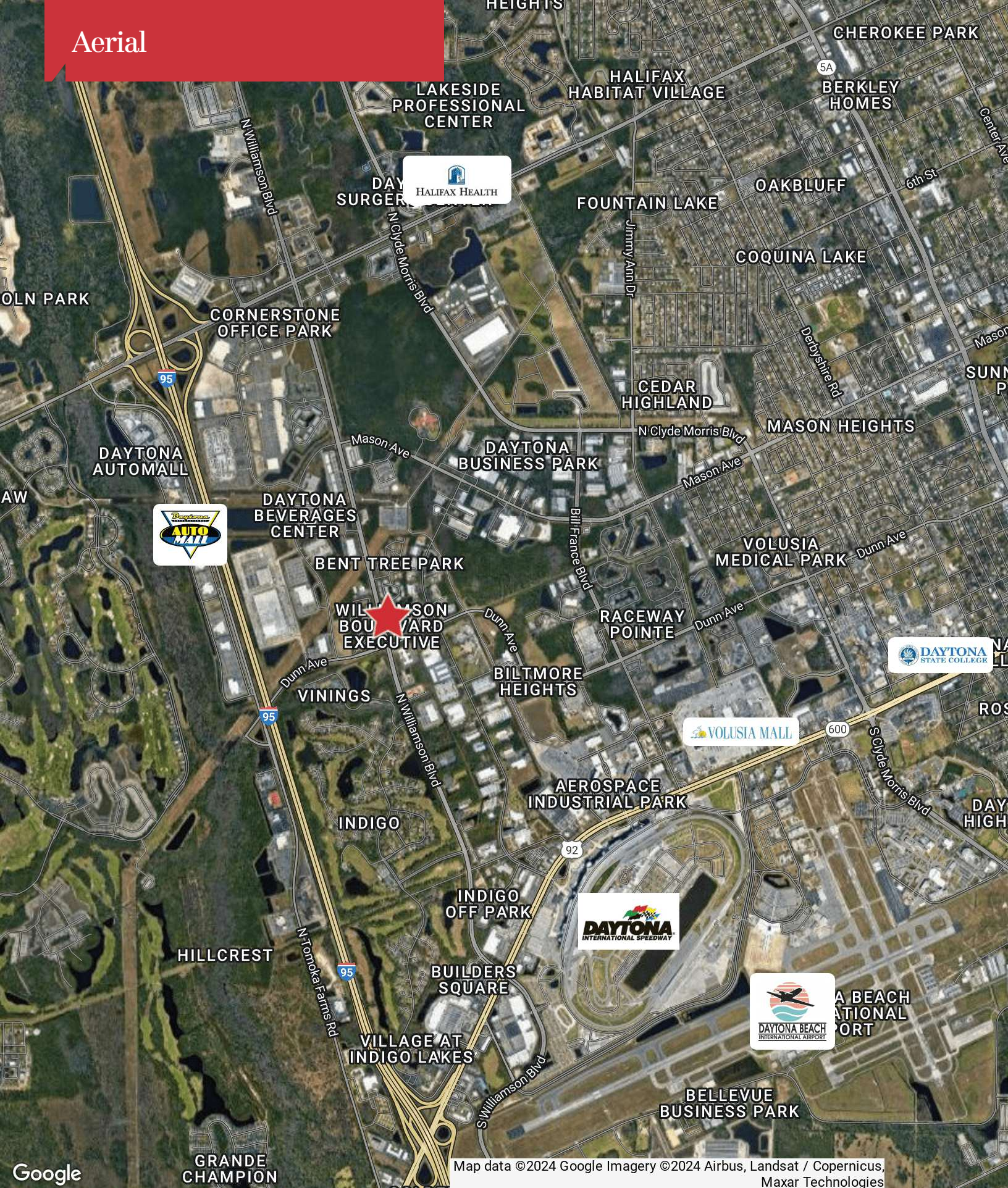




# Location Maps

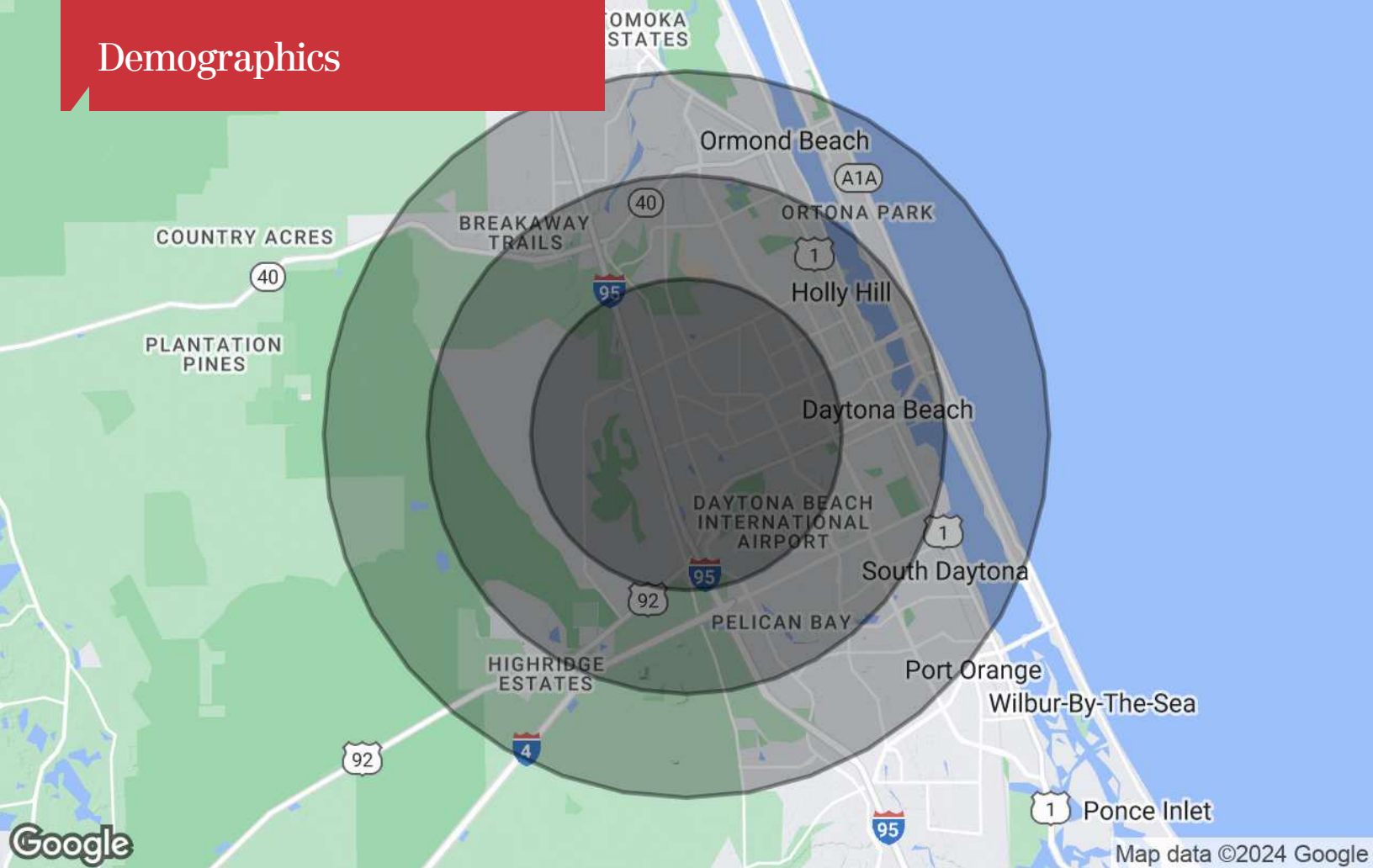








# Demographics



## Population

	3 Miles	5 Miles	7 Miles
TOTAL POPULATION	33,385	118,294	183,222
MEDIAN AGE	41	44	46
MEDIAN AGE (MALE)	40	43	45
MEDIAN AGE (FEMALE)	42	46	47

## Households & Income

	3 Miles	5 Miles	7 Miles
TOTAL HOUSEHOLDS	13,510	51,151	80,598
# OF PERSONS PER HH	2.5	2.3	2.3
AVERAGE HH INCOME	\$66,212	\$66,718	\$71,083
AVERAGE HOUSE VALUE	\$239,317	\$241,502	\$275,164

\* Demographic data derived from 2020 ACS - US Census