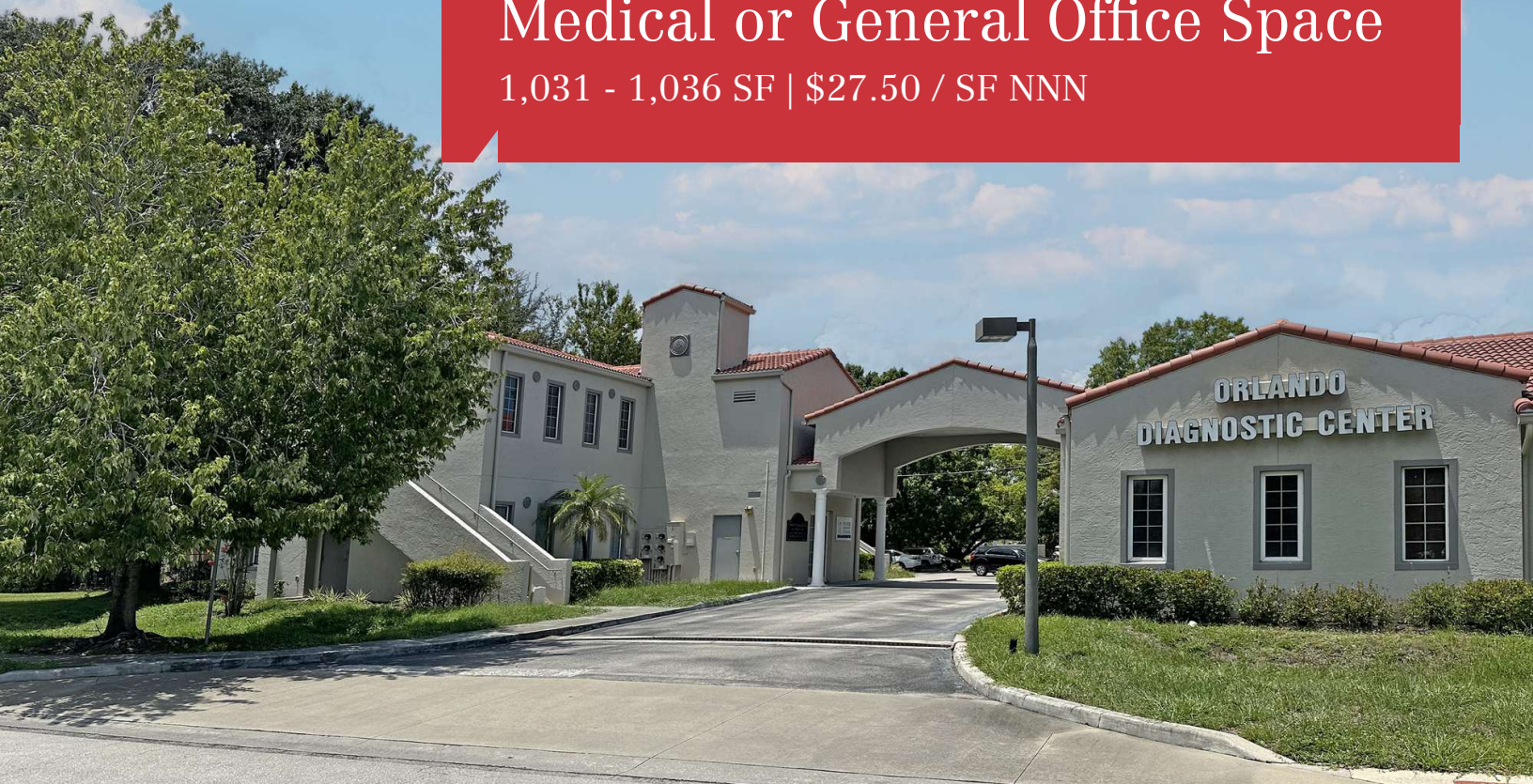


For Lease

# Medical or General Office Space

1,031 - 1,036 SF | \$27.50 / SF NNN



## 512 West Cherry Street

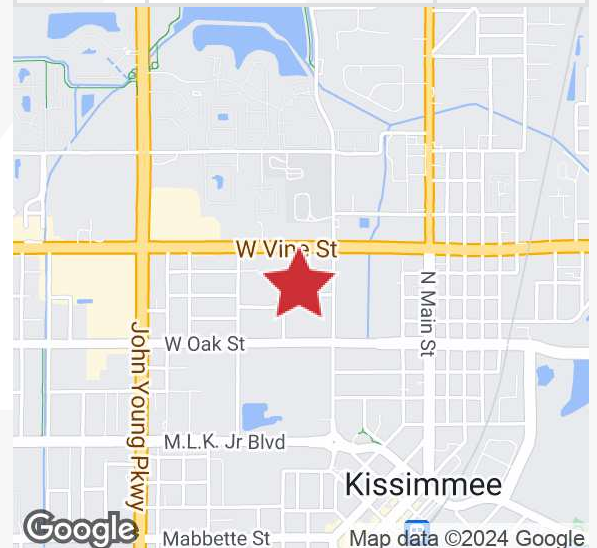
Kissimmee, Florida 34741

### Property Highlights

- 5,196± SF, two-story medical office building with elevator
- Both suites have a reception area, 1 private office, 3 exam rooms, kitchen/break area and restroom
- Fully built-out and available immediately!
- Well-suited for a variety of medical or general office uses; all suites are separately metered
- Just in front of HCA Florida Osceola Hospital
- Great location just off US Hwy 192-441 (Vine Street)
- Surrounded by dense residential and retail development
- Across the street from Central Avenue Elementary School and just down the street from the Plaza del Sol Shopping Center
- Zoning: Office

### AVAILABLE SPACES

Space	Lease Rate	Size (SF)
Suite C	\$27.50 SF/yr NNN	1,036
Suite D	\$27.50 SF/yr NNN	1,031



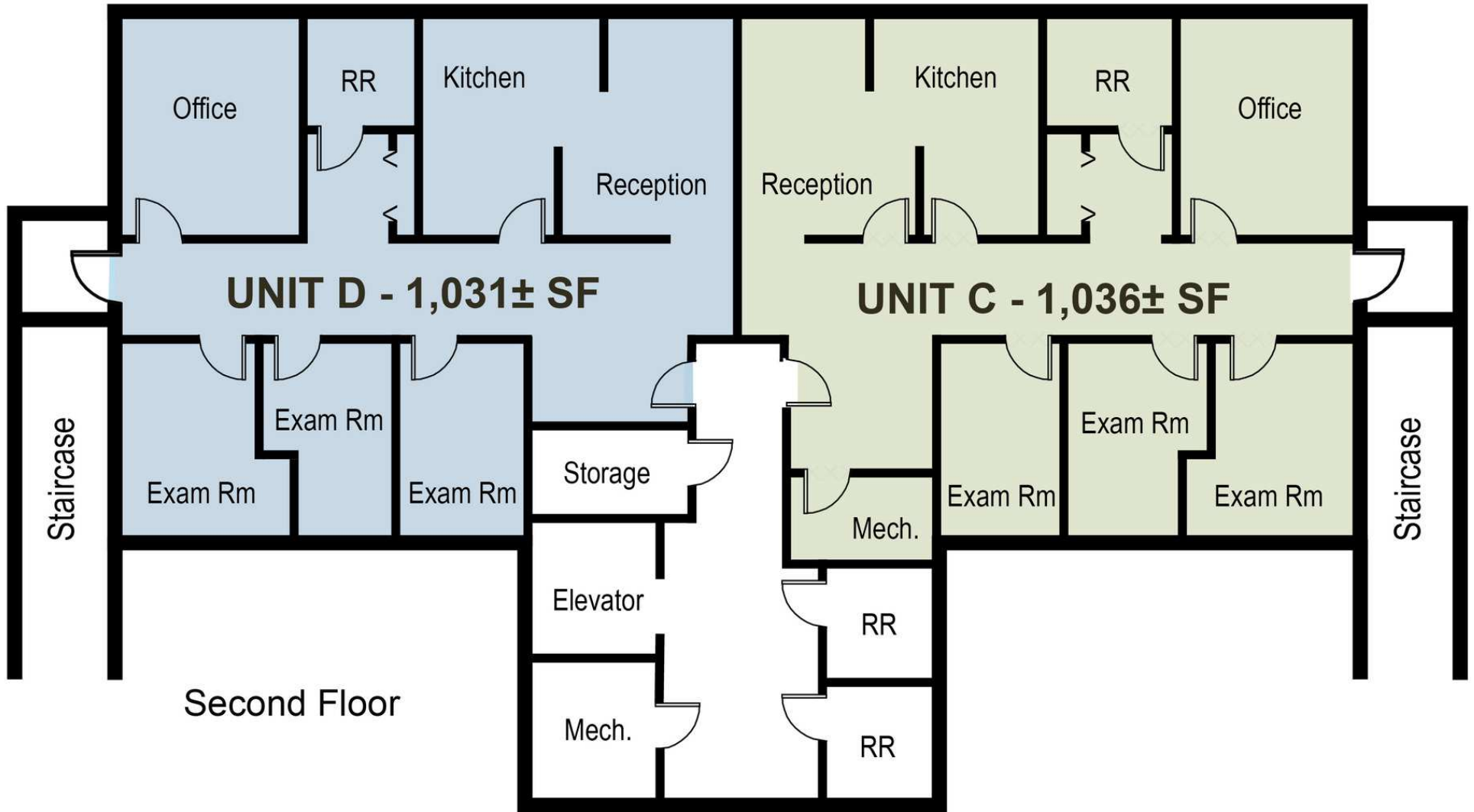
For more information

**Jeffrey Bloom, CCIM**

O: 407 949 0709

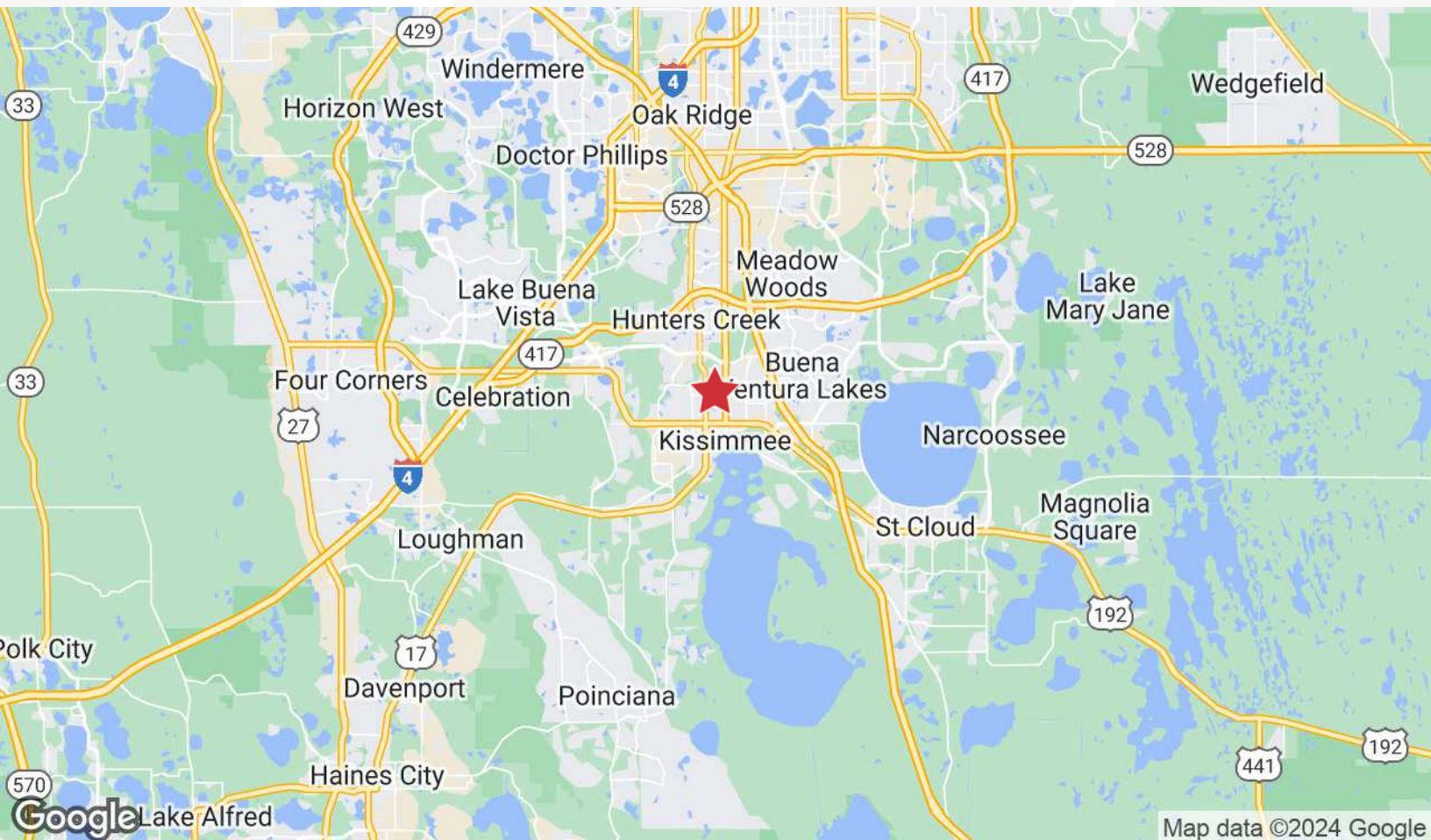
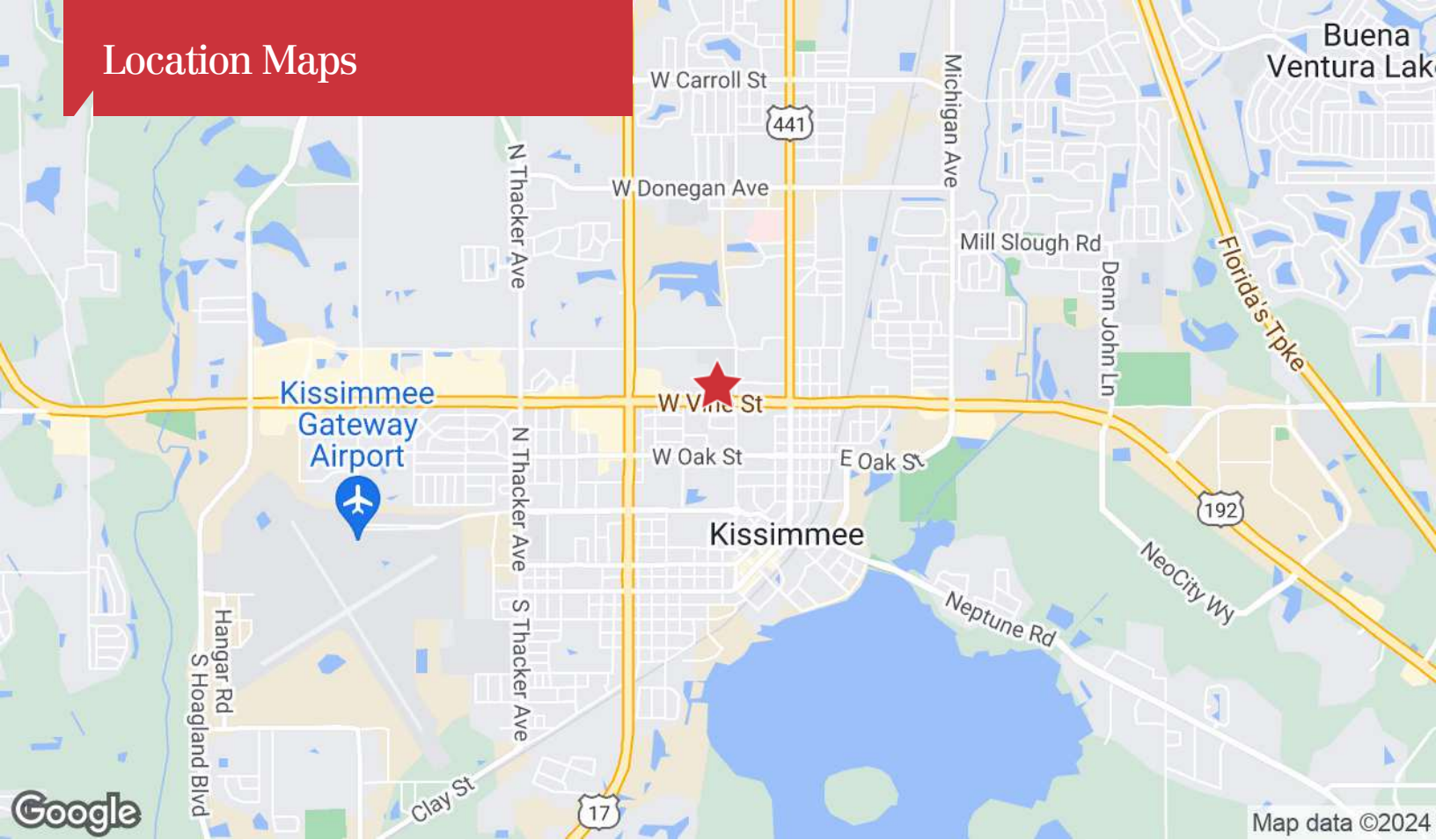
[jbloom@realvest.com](mailto:jbloom@realvest.com)

# Floorplan - 2nd Floor



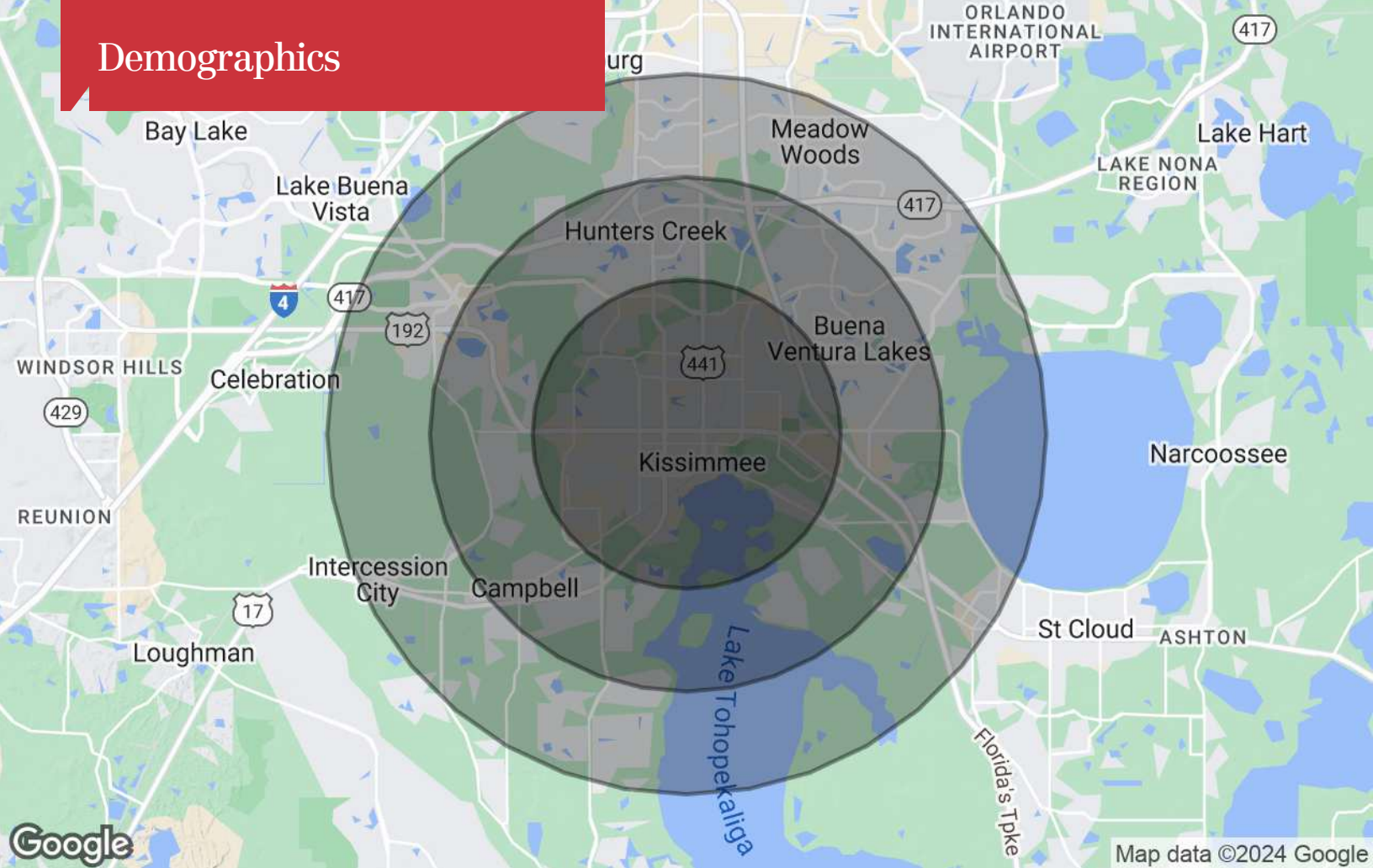


# Location Maps





# Demographics



## Population

	3 Miles	5 Miles	7 Miles
TOTAL POPULATION	88,028	225,299	338,262
MEDIAN AGE	39	39	39
MEDIAN AGE (MALE)	37	38	38
MEDIAN AGE (FEMALE)	40	40	40

## Households & Income

	3 Miles	5 Miles	7 Miles
TOTAL HOUSEHOLDS	30,286	75,382	111,546
# OF PERSONS PER HH	2.9	3	3
AVERAGE HH INCOME	\$65,571	\$77,465	\$83,472
AVERAGE HOUSE VALUE	\$330,618	\$337,876	\$350,002

\* Demographic data derived from 2020 ACS - US Census