

Bottle Brush Center

3660 CENTRAL AVENUE, FORT MYERS, FL 33901

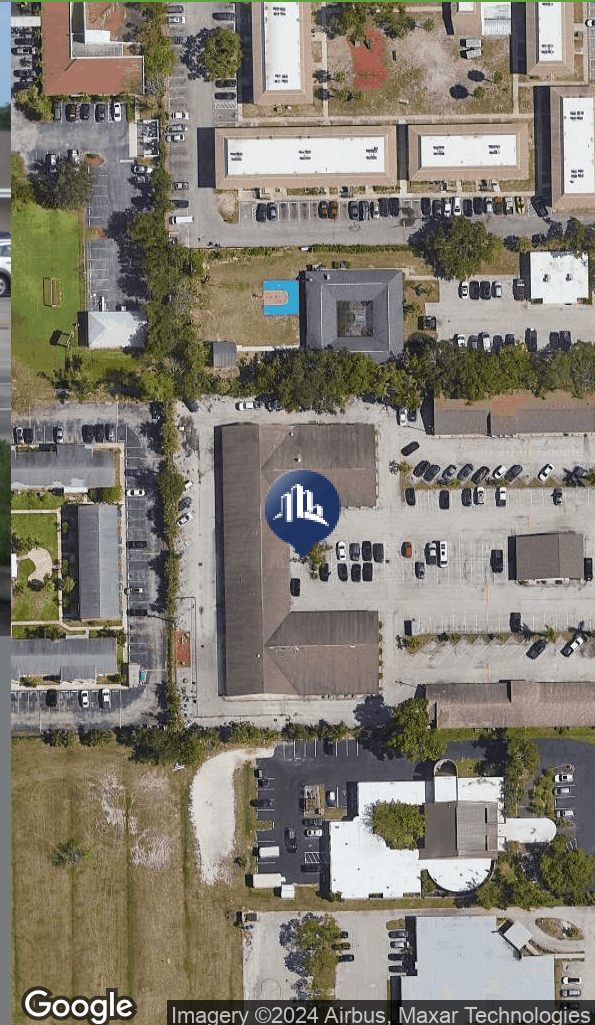
FOR LEASE

Office Building



AVAILABLE NOW

- Suite 14 - 1,880/SF - \$10/SF NNN - traditional office layout
- Suite 15 - 2,150/SF - \$13/SF NNN - can be build to suit
- Suite 6 - 1,000/SF - \$13/SF NNN - traditional office
- Plenty of parking
- Drive around access
- Habla Espanol
- Call Theresa Today



PROPERTY FEATURES

Maintained professional business complex in the heart of Fort Myers
Available for immediate occupancy
Professional or medical office spaces with multiple layouts
Central location provides easy access
Property is convenient to all the main arteries of Fort Myers: US-41, Colonial Blvd. and Winkler Ave
Call Theresa Today
Habla Espanol



Theresa Blanch-Mitchell, CCIM
1922 VICTORIA AVE STE A FT MYERS, FL 33901
239.265.2628
theresa@ccim.net
FL #BK3202944

Each office independently owned and operated.

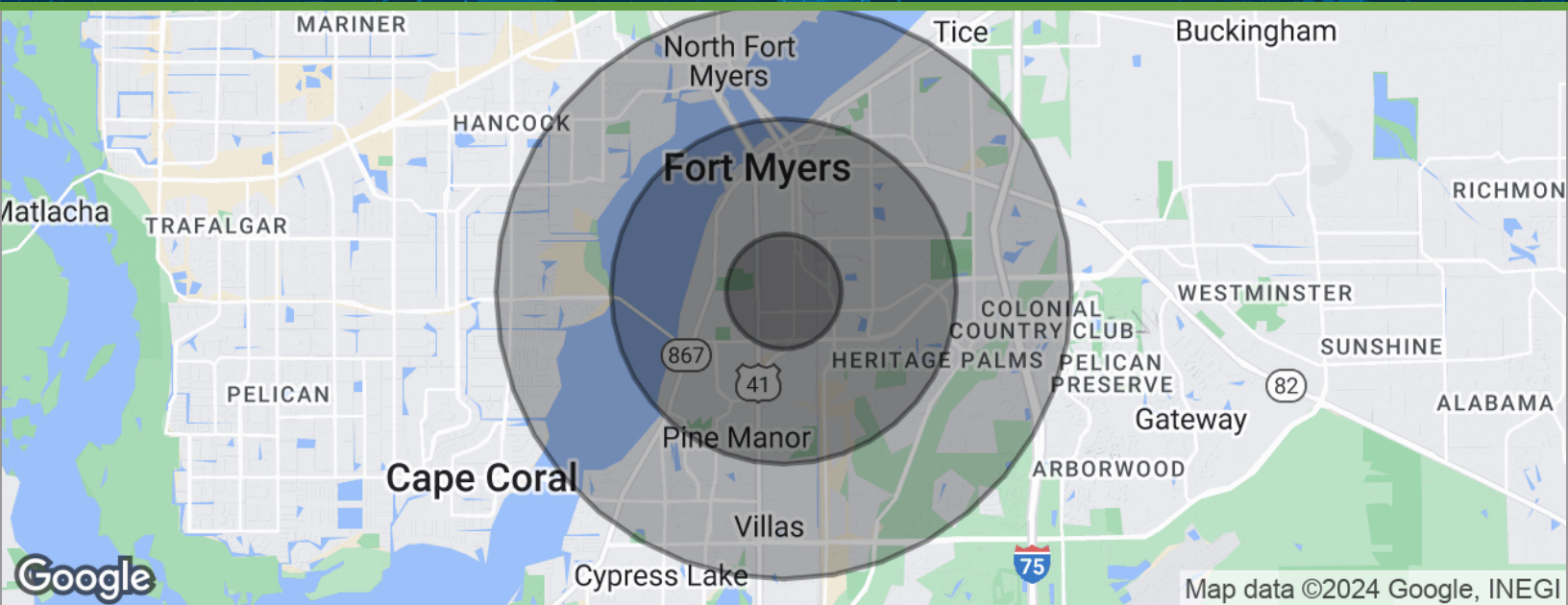
We obtained the information above from sources we believe to be reliable. However, we have not verified its accuracy and make no guarantee, warranty or representation about it. It is submitted subject to the possibility of errors, omissions, change of price, rental or other conditions, prior sale, lease or financing, or withdrawal without notice. We include projections, opinions, assumptions or estimates for example only, and they may not represent current or future performance of the property. You and your tax and legal advisors should conduct your own investigation of the property and transaction.

Bottle Brush Center

3660 CENTRAL AVENUE, FORT MYERS, FL 33901

FOR LEASE

Office Building



POPULATION	1 MILE	3 MILES	5 MILES
Total population	9,040	53,961	128,241
Median age	35.7	36.6	40.8
Median age (Male)	35.7	35.3	39.4
Median age (Female)	35.6	37.8	42.0
HOUSEHOLDS & INCOME	1 MILE	3 MILES	5 MILES
Total households	4,019	21,832	53,192
# of persons per HH	2.2	2.5	2.4
Average HH income	\$41,542	\$58,744	\$61,231
Average house value	\$131,035	\$255,260	\$243,396

* Demographic data derived from 2020 ACS - US Census



Theresa Blanch-Mitchell, CCIM
1922 VICTORIA AVE STE A FT MYERS, FL 33901
239.265.2628
theresa@ccim.net
FL #BK3202944

Each office independently owned and operated.

We obtained the information above from sources we believe to be reliable. However, we have not verified its accuracy and make no guarantee, warranty or representation about it. It is submitted subject to the possibility of errors, omissions, change of price, rental or other conditions, prior sale, lease or financing, or withdrawal without notice. We include projections, opinions, assumptions or estimates for example only, and they may not represent current or future performance of the property. You and your tax and legal advisors should conduct your own investigation of the property and transaction.