

PGD INDUSTRIAL PARK FOR LEASE

INDUSTRIAL/FLEX SPACE WITH INCENTIVES/BUILT-TO-SUIT



28261-28271-28281-28291 WOODLAWN, PUNTA GORDA, FL 33982

UNDER CONSTRUCTION
NOW PRE-LEASING PHASE II, III & IV



5,000 to 120,000 SF
AVAILABLE SEPTEMBER 2024

PGD Industrial Park has plans for a four 40,000 SF building industrial/flex complex, to be built in phases. Each phase will be a grey shell building that can be divided into up to eight 5,000± SF spaces measuring 50' x 100' each. Each unit features two roll-up doors: either 8' x 10' dock-high loading doors or 12' x 14' grade-level loading doors, an optional ground-to-dock ramp can be added to dock-high units for enhanced accessibility. In Phase II, Units A & H feature both a grade-level and dock-high door, while Units B-G have dock-high doors only. In Phases III & IV, each unit will have both a grade-level door and truckwell with dock-high door. Additionally, each unit has a front and rear entry door, two restrooms and plumbing for a third. Demising walls will be provided by the landlord, upon determination of tenant's size.

PGD Industrial Park is the ideal location for companies searching for brand-new space for manufacturing, warehousing, industrial offices and distribution in a thriving market. Within minutes of I-75, one of the premier industrial corridors in the country, drivers are granted access to all of the major markets in Florida. Three-quarters of Florida's population can be reached within a 150-mile radius of Southwest Florida.

CONTACT

FRED KERMANI, CCIM, AIA
Partner

239.659.4960

Fred.Kermani@CREconsultants.com

CRECONSULTANTS.com

PGD INDUSTRIAL PARK FOR LEASE

INDUSTRIAL/FLEX SPACE WITH INCENTIVES/BUILT-TO-SUIT



28261-28271-28281-28291 WOODLAWN, PUNTA GORDA, FL 33982



BASE LEASE RATE: From \$12.50 PSF NNN (5-Year Lease) or From \$12.00 PSF NNN (10-Year Lease) Grey Shell, will negotiate TI

OPEX: \$4.75 PSF (Estimated Including Property Tax & Building Insurance)

UNIT SIZE: 5,000 - 40,000± SF

BUILDING SIZE: Four 40,000± SF buildings. Phase I is fully leased. Phases II, III & IV, totaling 120,000± SF are available for pre-lease, can be divided into eight (8) 5,000± SF units per building

LAND SIZE: 20.38± Acres (1,345' x 660')

LOCATION: Located off Piper Road, the main road accessing the Punta Gorda Airport, with quick access to I-75 via Jones Loop Road 1± mile east of I-75, Exit 161 (Jones Loop Road), and 1/2 mile from Punta Gorda Airport

ZONING: ECAP - Enterprise Charlotte Airport Park (Charlotte County)
[Click here for zoning uses](#)

ASSOCIATION: Part of the Airport Commerce Center Authority Owners Association

YEAR BUILT: Phase I: 2021 Phase II, III, IV: September 2024

O/H DOORS: 12' x 14' Grade-Level or 8' x 10' Dock-High
Phase II: Units A & H feature both a Grade-level and Dock-High door. Units B-G have Dock-High doors only, with option to add dock-to-ground ramp for enhanced accessibility
Phase III & IV: All units have both grade-level and dock-high doors with truckwells

CLEAR HEIGHT: Phase II: 19'9" - 23'9" Phase III & IV: 30+' (at beam)

POWER: 3-Phase, 200 AMP, 277 VAC (Different specs can be negotiated)
One Electrical Panel per Unit

RESTROOMS: Each tenant will be provided with two restrooms & plumbing for a third

PARKING: 98 Non-exclusive Spaces for each phase

- Building is fully fire sprinklered
- Immediate I-75 interchange access
- Fiber optic internet & phone
- Accepting pre-leasing for future Phases II, III & IV, or fenced storage area in lieu of any future phases
- R-19 Roof & R-10 Wall Insulation

CRECONSULTANTS.com

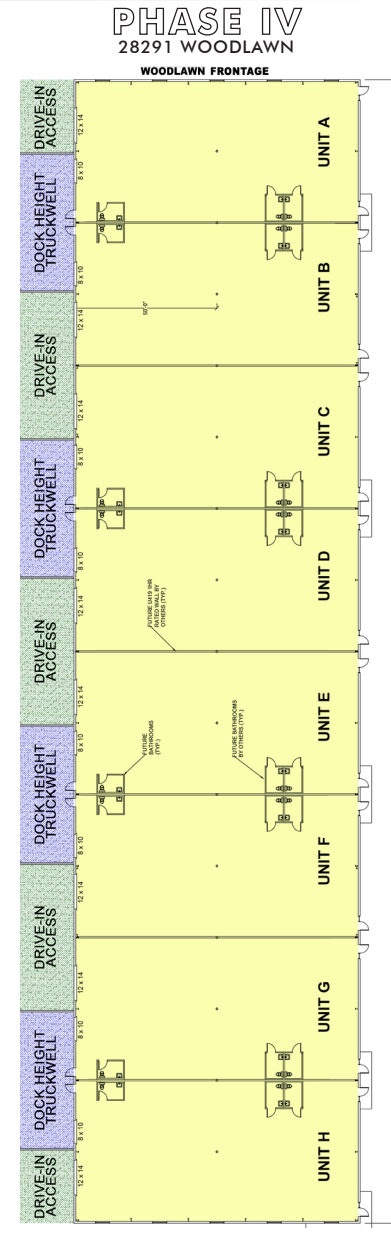
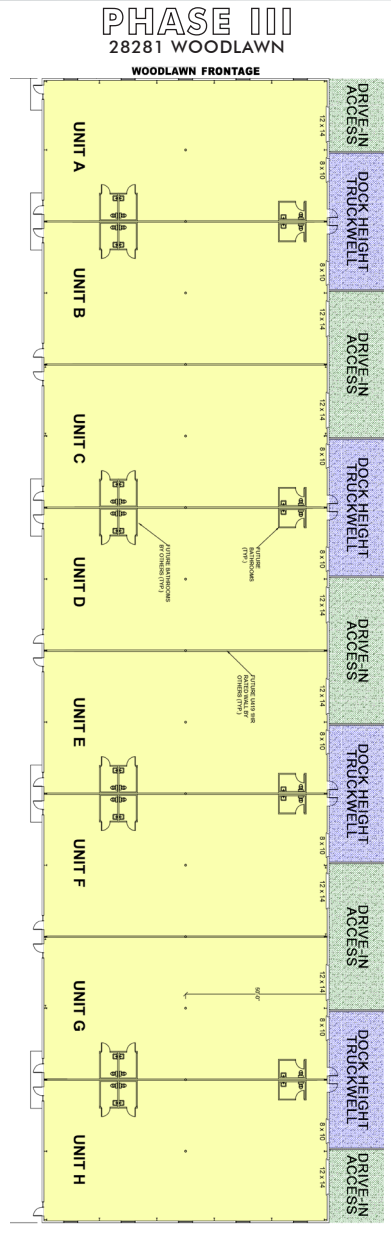
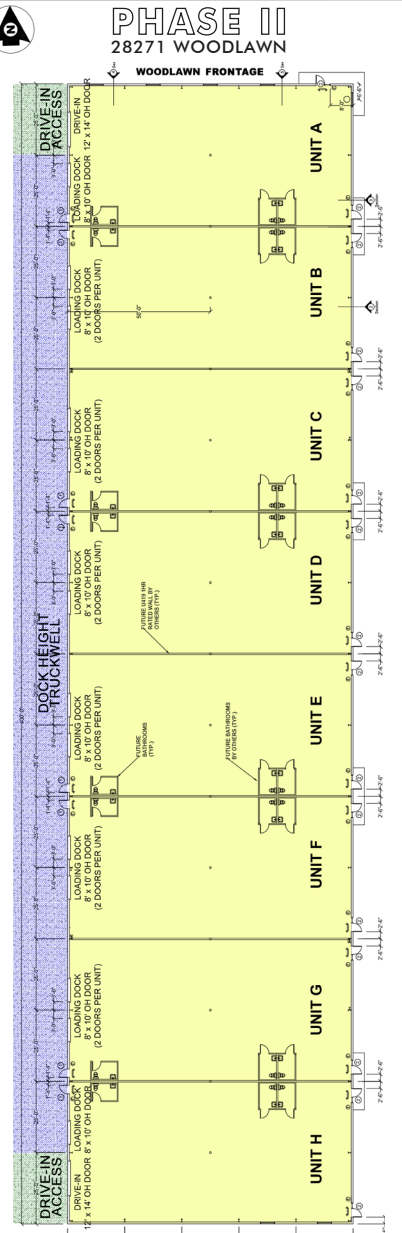
PGD INDUSTRIAL PARK FOR LEASE

INDUSTRIAL/FLEX SPACE WITH INCENTIVES/BUILT-TO-SUIT



28261-28271-28281-28291 WOODLAWN, PUNTA GORDA, FL 33982

BUILDING LAYOUTS



AVAILABLE **LEASED**

AVAILABILITY

AVAILABLE UNITS	UNIT SIZE		#	OVERHEAD DOORS	
	SIZE (SF)	DIMENSIONS		SIZE	TYPE
PHASE II - 28271 WOODLAWN					
A	5,000	50' x 100'	2	8' x 10' & 12' x 14'	Dock-High & Grade-Level
B	5,000	50' x 100'	2	8' x 10'	Dock-High
C	5,000	50' x 100'	2	8' x 10'	Dock-High
D	5,000	50' x 100'	2	8' x 10'	Dock-High
E	5,000	50' x 100'	2	8' x 10'	Dock-High
F	5,000	50' x 100'	2	8' x 10'	Dock-High
G	5,000	50' x 100'	2	8' x 10'	Dock-High
H	5,000	50' x 100'	2	8' x 10' & 12' x 14'	Dock-High & Grade-Level
PHASE III - 28281 WOODLAWN					
A	5,000	50' x 100'	2	8' x 10' & 12' x 14'	Dock-High & Grade-Level
B	5,000	50' x 100'	2	8' x 10' & 12' x 14'	Dock-High & Grade-Level
C	5,000	50' x 100'	2	8' x 10' & 12' x 14'	Dock-High & Grade-Level
D	5,000	50' x 100'	2	8' x 10' & 12' x 14'	Dock-High & Grade-Level
E	5,000	50' x 100'	2	8' x 10' & 12' x 14'	Dock-High & Grade-Level
F	5,000	50' x 100'	2	8' x 10' & 12' x 14'	Dock-High & Grade-Level
G	5,000	50' x 100'	2	8' x 10' & 12' x 14'	Dock-High & Grade-Level
H	5,000	50' x 100'	2	8' x 10' & 12' x 14'	Dock-High & Grade-Level
PHASE IV - 28291 WOODLAWN					
A	5,000	50' x 100'	2	8' x 10' & 12' x 14'	Dock-High & Grade-Level
B	5,000	50' x 100'	2	8' x 10' & 12' x 14'	Dock-High & Grade-Level
C	5,000	50' x 100'	2	8' x 10' & 12' x 14'	Dock-High & Grade-Level
D	5,000	50' x 100'	2	8' x 10' & 12' x 14'	Dock-High & Grade-Level
E	5,000	50' x 100'	2	8' x 10' & 12' x 14'	Dock-High & Grade-Level
F	5,000	50' x 100'	2	8' x 10' & 12' x 14'	Dock-High & Grade-Level
G	5,000	50' x 100'	2	8' x 10' & 12' x 14'	Dock-High & Grade-Level
H	5,000	50' x 100'	2	8' x 10' & 12' x 14'	Dock-High & Grade-Level

Units can be combined in 2,500 SF increments
Optional dock-to-ground ramps for dock-high units

CONTACT
FRED KERMANI, CCIM, AIA
Partner
239.659.4960
Fred.Kermani@CREconsultants.com

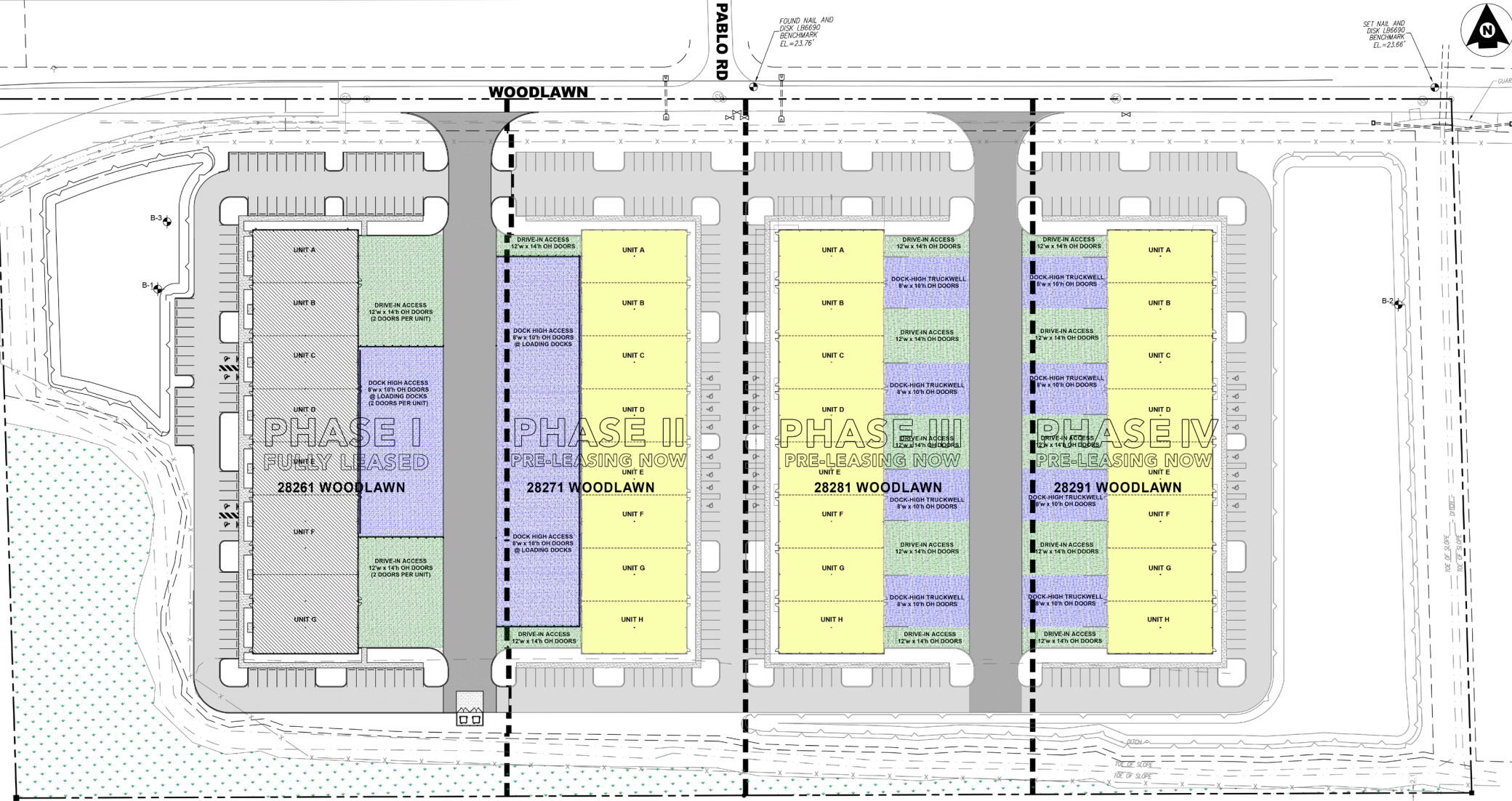
PGD INDUSTRIAL PARK FOR LEASE

INDUSTRIAL/FLEX SPACE WITH INCENTIVES/BUILT-TO-SUIT



28261-28271-28281-28291 WOODLAWN, PUNTA GORDA, FL 33982

SITE PLAN



AVAILABLE (Yellow box) LEASED (Hatched box)

CONTACT
FRED KERMANI, CCIM, AIA
 Partner
 239.659.4960
 Fred.Kermani@CREconsultants.com

CRECONSULTANTS.com

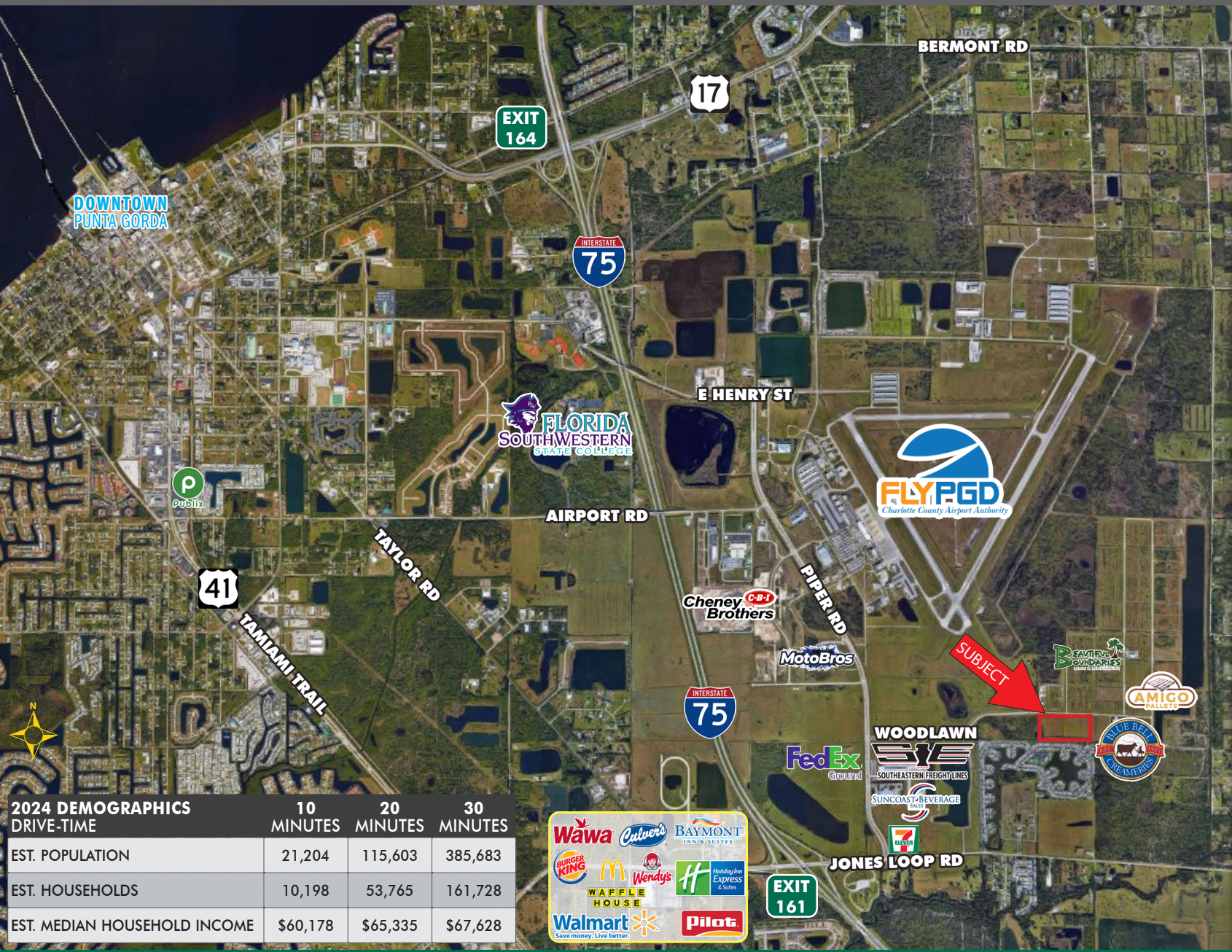
For illustrative purposes only and subject to change without notice. No liability hereby assumed for errors or omissions. CRE Consultants makes no guarantees, warranties or representations as to the completeness or accuracy thereof, and is subject to errors, omissions, change of price or conditions prior to sale or lease, or withdrawal without notice.

PGD INDUSTRIAL PARK FOR LEASE

INDUSTRIAL/FLEX SPACE WITH INCENTIVES/BUILT-TO-SUIT



28261-28271-28281-28291 WOODLAWN, PUNTA GORDA, FL 33982



DISTANCE DRIVE TIMES

- Punta Gorda Airport
0.5± Miles
- I-75
1.5± Miles
- US 41
3.2± Miles
- Downtown Punta Gorda
5± Miles
- Fort Myers
23± Miles
- SWFL International Airport
37± Miles
- Sarasota Bradenton
International Airport
61± Miles

2024 DEMOGRAPHICS DRIVE-TIME	10 MINUTES	20 MINUTES	30 MINUTES
EST. POPULATION	21,204	115,603	385,683
EST. HOUSEHOLDS	10,198	53,765	161,728
EST. MEDIAN HOUSEHOLD INCOME	\$60,178	\$65,335	\$67,628



CONTACT

FRED KERMANI, CCIM, AIA
Partner
239.659.4960
Fred.Kermani@CREconsultants.com
CREconsultants.com/FredKermani

CRECONSULTANTS.com

12140 Carissa Commerce Ct., Suite 102, Fort Myers, FL 33966 | 1100 Fifth Ave. S, Suite 404, Naples, FL 34102

07/30/24

The information contained herein was obtained from sources believed reliable. CRE Consultants makes no guarantees, warranties or representations as to the completeness or accuracy thereof, and is subject to errors, omissions, change of price or conditions prior to sale or lease, or withdrawal without notice.