

Barrio Palmas Industrial Property For Sale

PR-869, Km. 2.5, Palmas Ward, Cataño, PR



Property Highlights

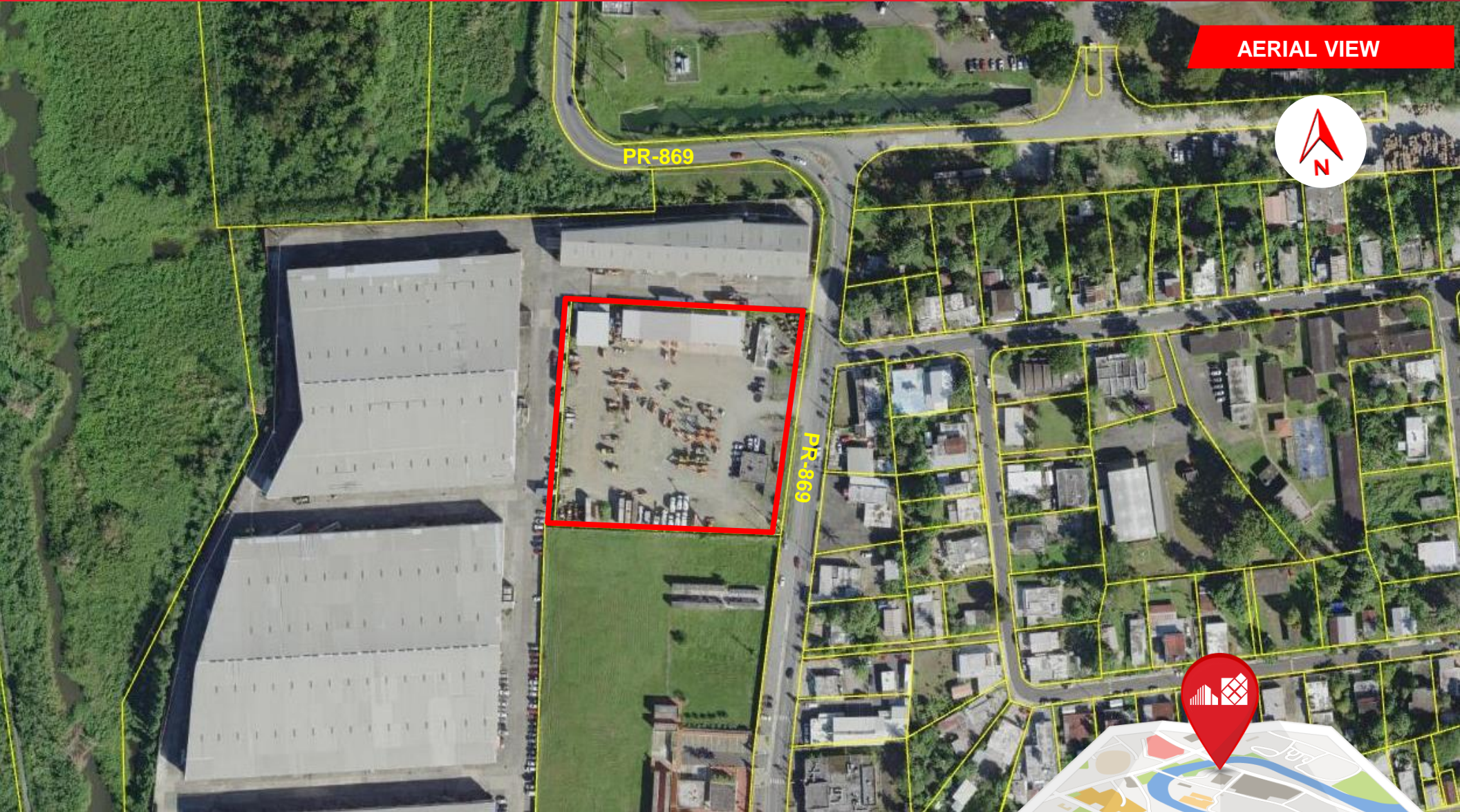
- Lot Area: 12,565.57 SM (3.2 cuerdas)
- Zoning: I-P (Heavy Industrial)
- Buildings: Office Buildings A&B: 3,700 SF
- Coordinates: 18.4377, -66.1542



Barrio Palmas Industrial Property For Sale

PR-869, Km. 2.5, Palmas Ward, Cataño, PR

AERIAL VIEW



[Click Here to Go To Map](#)

The depiction in the included photograph of any person, entity, sign, logo or property, other than Cushman & Wakefield's (C&W) client and the property offered by C&W, is incidental only, and not intended to connote any affiliation. Connection, association, sponsorship or approval by or between that which is incidentally depicted by C&W or its client. This listing shall not be deemed an offer to lease, sublease or sell such property; and, in the event of any transaction for such property, no commission shall be earned or payable to any cooperating broker except if otherwise provided pursuant to the express terms, rates and conditions of C&W's agreement with its principal, if, as and when such commission (if any) is actually received from such principal. (A copy of the rates and conditions referred to above with respect to this property is available upon request.) Brokers representing purchasers or tenants must look to their clients for commissions. No warranty or representation, express or implied, is made as to the accuracy of the information contained herein, and same is submitted subject to errors omissions, change of price, rental and other conditions, withdrawal without notice, and to specific listing conditions, imposed by our principals.

Barrio Palmas Industrial Property For Sale

PR-869, Km. 2.5, Palmas Ward, Cataño, PR

Location



Barrio Palmas Industrial Property For Sale

PR-869, Km. 2.5, Palmas Ward, Cataño, PR

Location



Barrio Palmas Industrial Property For Sale

PR-869, Km. 2.5, Palmas Ward, Cataño, PR

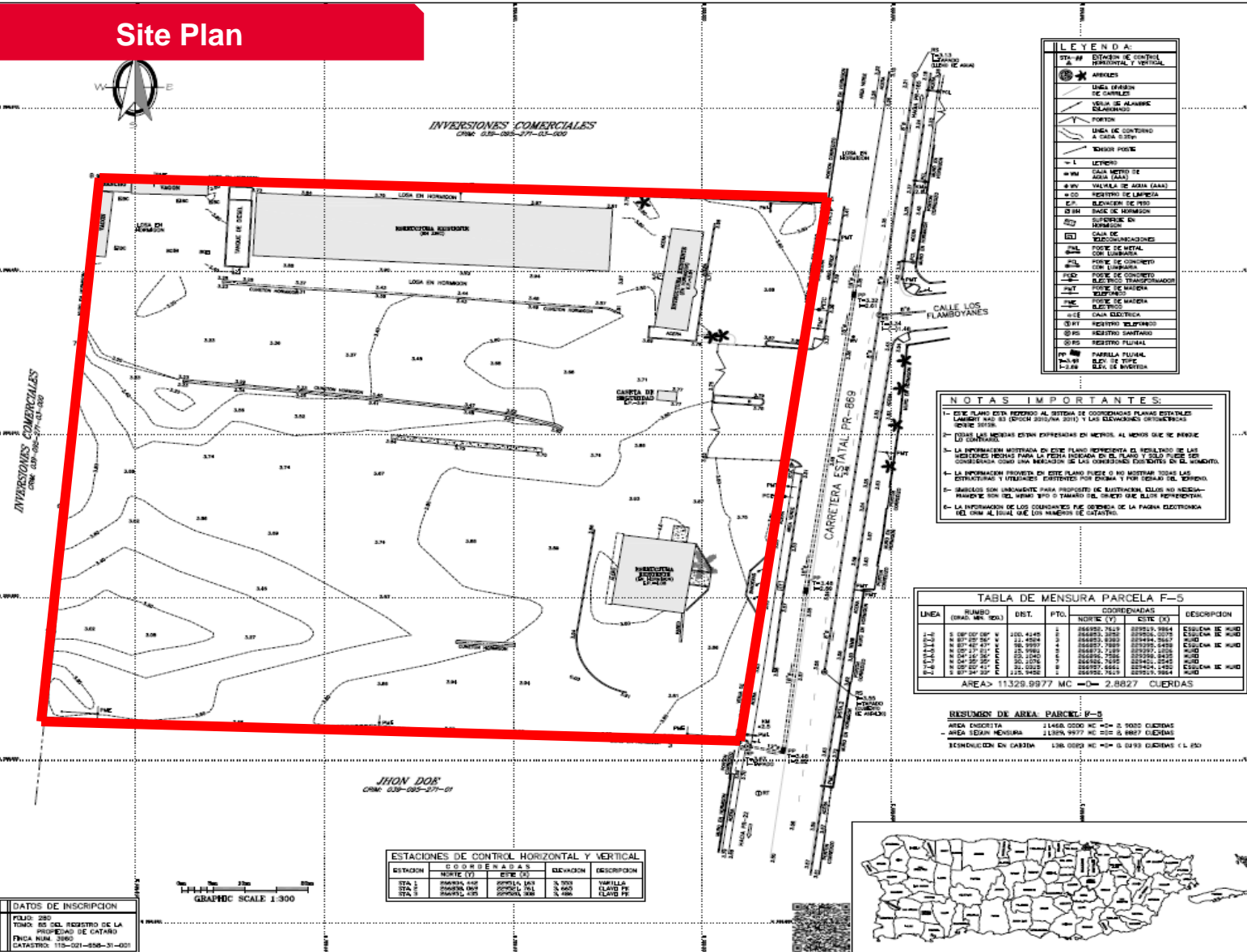
Location



Barrio Palmas Industrial Property For Sale

PR-869, Km. 2.5, Palmas Ward, Cataño, PR

Site Plan



LEYENDA:

- STA-# ESTACION DE CONTROL HORIZONTAL Y VERTICAL
- ARREDES
- LINEA DE VISION DE CARRETERAS
- VALLETA DE ALAMBRE CLASIFICADA
- PORTON
- LINEA DE CONTORNO A CADA 1.00M
- YONAS PASE
- L LECTIVO
- WM CADA METRO DE AGUA (WAL)
- WV VALLETA DE AGUA (WVA)
- CO REGISTRO DE LAMBECA
- ELACION DE RED
- DM SAGE DE INMUNISON
- SUPERFICIE EN CUADROS
- CAJA DE COMERCIALIZACIONES
- POSTE DE METAL CON SUBMARRA
- POSTE DE CONCRETO CON SUBMARRA
- POSTE DE MADERA CORTADO
- POSTE DE MADERA CORTADO
- CAJA ELECTRICA
- REGISTRO TELEFONICO
- REGISTRO SANTONER
- REGISTRO FUSIONAL
- PARRELLA PLUMAL
- BLO. DE INYECTA

NOTAS IMPORTANTES:

- ESTE PLANO ESTA REFERIDO AL SISTEMA DE COORDENADAS PLANAS ESTATALES (NORTE Y) Y (EESTE X) DEL SISTEMA UTM, Y LAS ELEVACIONES SON EN METROS SOBRE EL NIVEL DEL MARI MUJERTO.
- PODES LAS MEDIDAS ESTAN EXPRESADAS EN METROS AL MENOS DIEZ DECIMALES DE CONTADES.
- LA INFORMACION MOSTRADA EN ESTE PLANO REPRESENTA EL RESULTADO DE LAS MEDIDAS HECHAS PARA LA FINCA DESCRITA EN EL PLANO Y SOLO PUEDE SER CONSIDERADO COMO UNA REFERENCIA DE LAS CONDICIONES EXISTENTES EN EL MOMENTO.
- LA INFORMACION PROVEIDA EN ESTE PLANO PUEDE O NO MOSTRAR TODAS LAS ESTRUCTURAS Y UTILIDADES EXISTENTES POR EJEMPLO, SI POR EJEMPLO DEL TERRENO, MANIFIESTA SIN EL NIVEL Y/O TAMAÑO DEL GRADO DE ELAS REPRESENTA.
- LA INFORMACION DE LOS COMADRES PUEDE OBTENERSE DE LA PAGINA ELECTRONICA DEL CNM AL FINAL DE LOS NUMEROS DE CATASTRO.

TABLA DE MENSURA PARCELA F-5

LINEA	RUMBO (GRAD. MR. RED.)	DIST.	PTO.	COORDENADAS		DESCRIPCION
				NORTE (Y)	EESTE (X)	
1	89°07'07"00"	210.4245	PTO. 1	288814.422	209121.147	CISION DE MUD
2	89°07'07"00"	21.4504	PTO. 2	288814.422	209121.147	CISION DE MUD
3	89°07'07"00"	21.4504	PTO. 3	288814.422	209121.147	CISION DE MUD
4	89°07'07"00"	21.4504	PTO. 4	288814.422	209121.147	CISION DE MUD
5	89°07'07"00"	21.4504	PTO. 5	288814.422	209121.147	CISION DE MUD
6	89°07'07"00"	21.4504	PTO. 6	288814.422	209121.147	CISION DE MUD
7	89°07'07"00"	21.4504	PTO. 7	288814.422	209121.147	CISION DE MUD
8	89°07'07"00"	21.4504	PTO. 8	288814.422	209121.147	CISION DE MUD
9	89°07'07"00"	21.4504	PTO. 9	288814.422	209121.147	CISION DE MUD
10	89°07'07"00"	21.4504	PTO. 10	288814.422	209121.147	CISION DE MUD
11	89°07'07"00"	21.4504	PTO. 11	288814.422	209121.147	CISION DE MUD
12	89°07'07"00"	21.4504	PTO. 12	288814.422	209121.147	CISION DE MUD
13	89°07'07"00"	21.4504	PTO. 13	288814.422	209121.147	CISION DE MUD
14	89°07'07"00"	21.4504	PTO. 14	288814.422	209121.147	CISION DE MUD
15	89°07'07"00"	21.4504	PTO. 15	288814.422	209121.147	CISION DE MUD
16	89°07'07"00"	21.4504	PTO. 16	288814.422	209121.147	CISION DE MUD
17	89°07'07"00"	21.4504	PTO. 17	288814.422	209121.147	CISION DE MUD
18	89°07'07"00"	21.4504	PTO. 18	288814.422	209121.147	CISION DE MUD
19	89°07'07"00"	21.4504	PTO. 19	288814.422	209121.147	CISION DE MUD
20	89°07'07"00"	21.4504	PTO. 20	288814.422	209121.147	CISION DE MUD
21	89°07'07"00"	21.4504	PTO. 21	288814.422	209121.147	CISION DE MUD
22	89°07'07"00"	21.4504	PTO. 22	288814.422	209121.147	CISION DE MUD
23	89°07'07"00"	21.4504	PTO. 23	288814.422	209121.147	CISION DE MUD
24	89°07'07"00"	21.4504	PTO. 24	288814.422	209121.147	CISION DE MUD
25	89°07'07"00"	21.4504	PTO. 25	288814.422	209121.147	CISION DE MUD
26	89°07'07"00"	21.4504	PTO. 26	288814.422	209121.147	CISION DE MUD
27	89°07'07"00"	21.4504	PTO. 27	288814.422	209121.147	CISION DE MUD
28	89°07'07"00"	21.4504	PTO. 28	288814.422	209121.147	CISION DE MUD
29	89°07'07"00"	21.4504	PTO. 29	288814.422	209121.147	CISION DE MUD
30	89°07'07"00"	21.4504	PTO. 30	288814.422	209121.147	CISION DE MUD

AREA = 11329.9977 MC = 2.8827 CUERDAS

RESUMEN DE AREA PARCEL F-5

AREA ENCRISTA 21484.0000 MC = 5.3000 CUERDAS
 AREA LEYAN MENSURA 11329.9977 MC = 2.8827 CUERDAS
 PERIMETRO EN CADA UNO 1386.0000 MC = 3.0193 CUERDAS C.L. 250



MAPA DE LOCALIZACION
Escala: 1:5000
NORTE (Y) = 288829.7
EESTE (X) = 209121.4



MAPA DE FEMA
MAPA REVISADO: 10/08/2009
NUMERO DE MAPA: 700002755, ZONA 3



MAPA DE CALIFICACION
MAPA CALIFICACION DE SUJETO
DE 2009 (PARA 1110)
VIGENCIA: 2009

REVISIONES

NO.	DESCRIPCION	FECHA

PLANO DE MENSURA Y CONDICIONES EXISTENTES DE UNA PARCELA DE TERRENO (F-5) LOCALIZADA EN LA CARRETERA ESTATAL PR-869 KM 2.5, EN EL BARRIO PALMAS, CATAÑO, PUERTO RICO

NOMBRE DE AREA: LS-752 GONZALEZ TAINO, CATAÑO
 REVISADO POR: J. NEVÉS
 DIA Y LUGAR DE CAMPO: C. PUERTO RICO
 ESCALA: 1:300
 FECHA: 13 de SEPT. de 2018

AGRIM-1

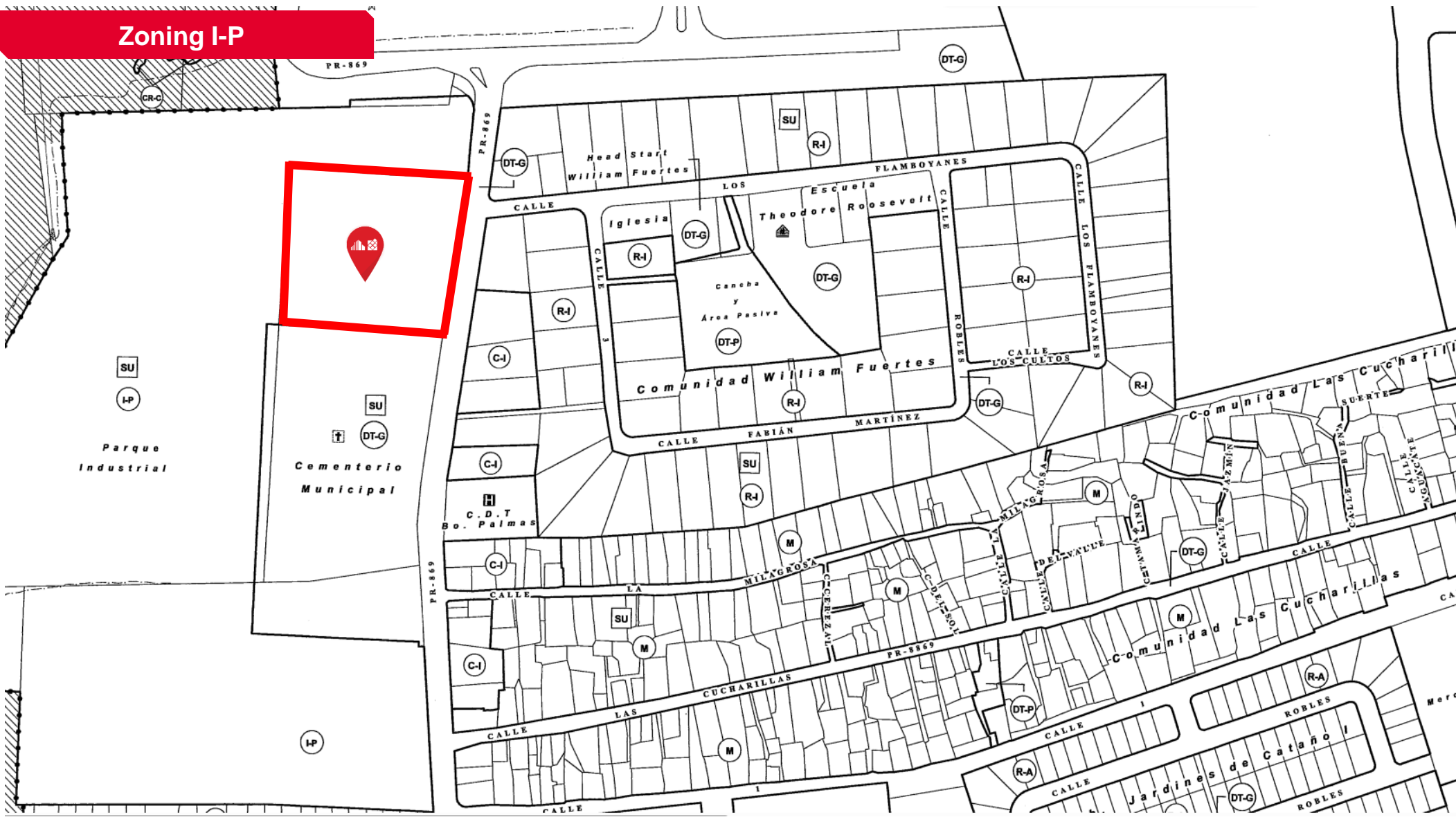
FOLIO	TOTAL
1	1

The depiction in the included photograph of any person, entity, sign, logo or property, other than Cushman & Wakefield's (C&W) client and the property offered by C&W, is incidental only, and not intended to connote any affiliation, connection, association, sponsorship or approval by or between that which is incidentally depicted by C&W or its client. This listing shall not be deemed an offer to lease, sublease or sell such property; and, in the event of any transaction for such property, no commission shall be earned or payable to any cooperating broker except if otherwise provided pursuant to the express terms, rates and conditions of C&W's agreement with its principal, if any, and when such commission (if any) is actually received from such principal. (A copy of the rates and conditions referred to above with respect to this property is available upon request.) Brokers representing purchasers or tenants must look to their clients for commissions. No warranty or representation, express or implied, is made as to the accuracy of the information contained herein, and same is submitted subject to errors omissions, change of price, rental and other conditions, withdrawal without notice, and to specific listing conditions, imposed by our principals.

Barrio Palmas Industrial Property For Sale

PR-869, Km. 2.5, Palmas Ward, Cataño, PR

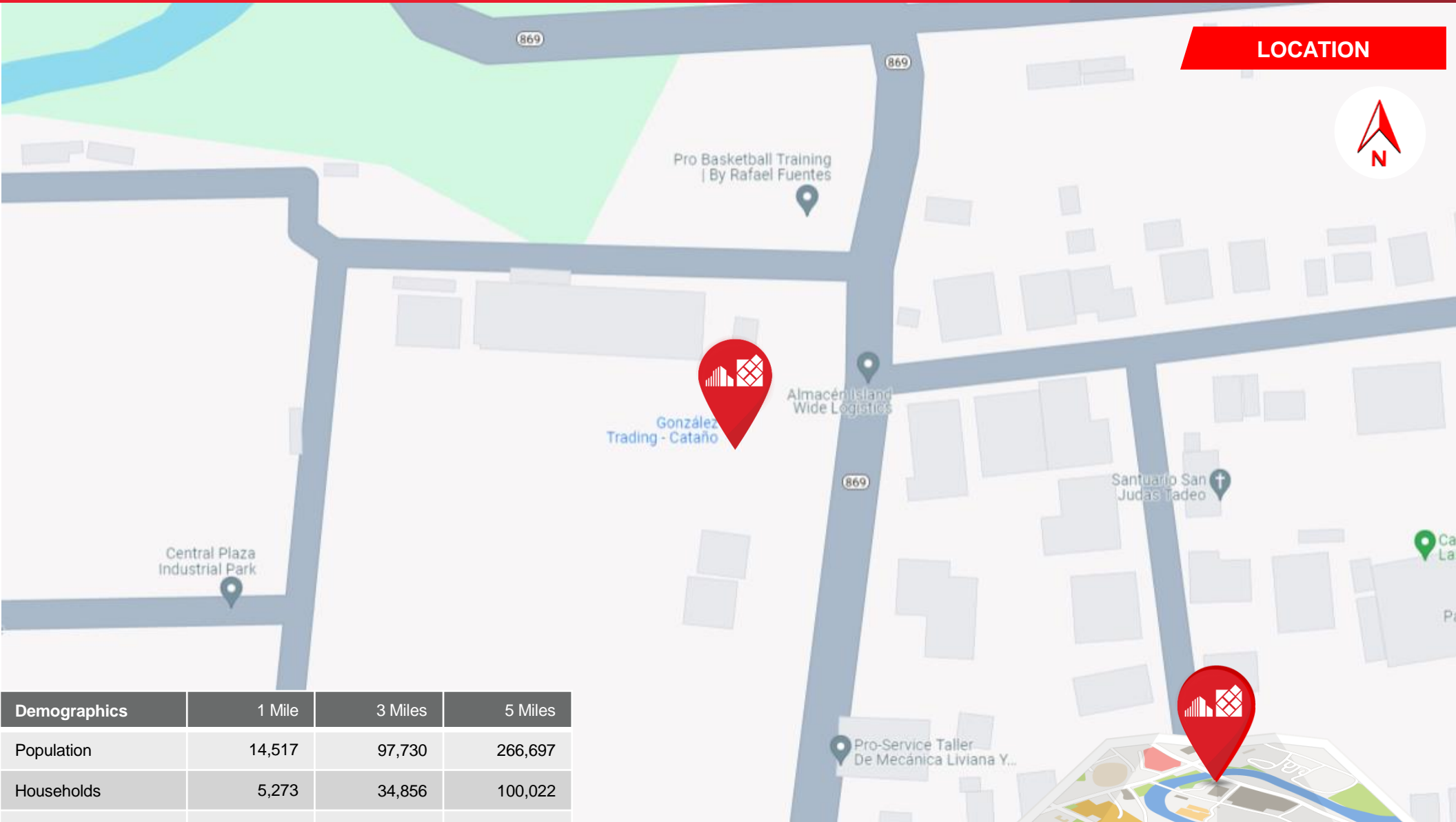
Zoning I-P



Barrio Palmas Industrial Property For Sale

PR-869, Km. 2.5, Palmas Ward, Cataño, PR

LOCATION



Demographics	1 Mile	3 Miles	5 Miles
Population	14,517	97,730	266,697
Households	5,273	34,856	100,022
Median Income	\$ 32,334	\$ 30,805	\$ 33,032
Average Income	\$ 44,836	\$ 43,702	\$ 50,916



[Click Here to Go To Map](#)

The depiction in the included photograph of any person, entity, sign, logo or property, other than Cushman & Wakefield's (C&W) client and the property offered by C&W, is incidental only, and not intended to connote any affiliation. Connection, association, sponsorship or approval by or between that which is incidentally depicted by C&W or its client. This listing shall not be deemed an offer to lease, sublease or sell such property; and, in the event of any transaction for such property, no commission shall be earned or payable to any cooperating broker except if otherwise provided pursuant to the express terms, rates and conditions of C&W's agreement with its principal, if, as and when such commission (if any) is actually received from such principal. (A copy of the rates and conditions referred to above with respect to this property is available upon request.) Brokers representing purchasers or tenants must look to their clients for commissions. No warranty or representation, express or implied, is made as to the accuracy of the information contained herein, and same is submitted subject to errors omissions, change of price, rental and other conditions, withdrawal without notice, and to specific listing conditions, imposed by our principals.