



Flat Industrial Land, with large frontage to PR-866 and PR-22 visibility

Property Highlights

- Zoning: I-P (Industrial Pesado or “Heavy Industrial”)
- Area: 62,331 SM (15.86 cuerdas)
- Coordinates: 18.417370, -66.198918

Land for Sale in Toa Baja

PR-866, Km. 2.2, Candelaria and Sabana Seca Wards, Toa Baja, PR 00951



AERIAL VIEW

[Click Here to Go To Map](#)

Land for Sale in Toa Baja

PR-866, Km. 2.2, Candelaria and Sabana Seca Wards, Toa Baja, PR 00951

Looking East & PR 22



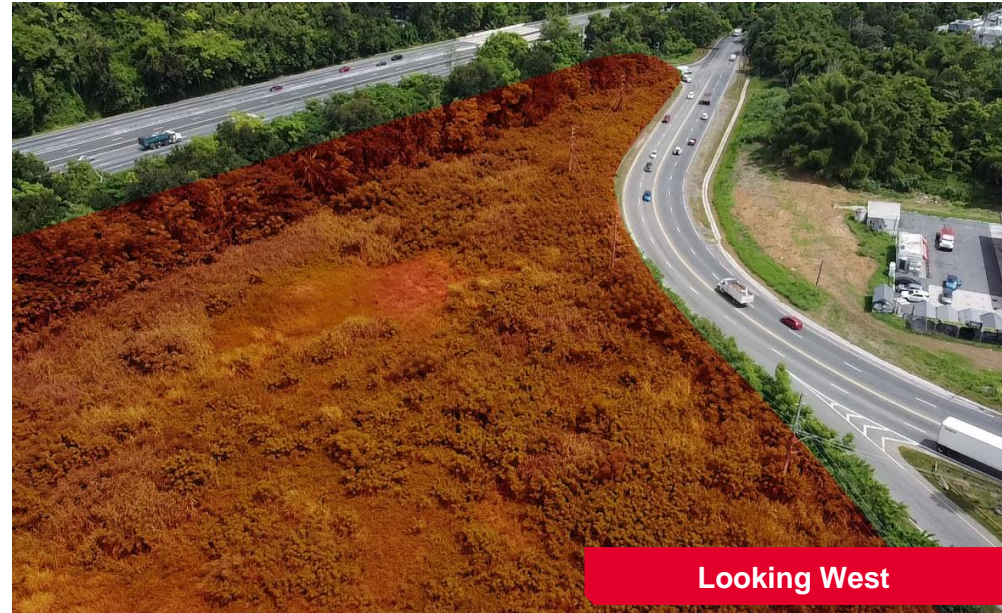
Looking North PR 866



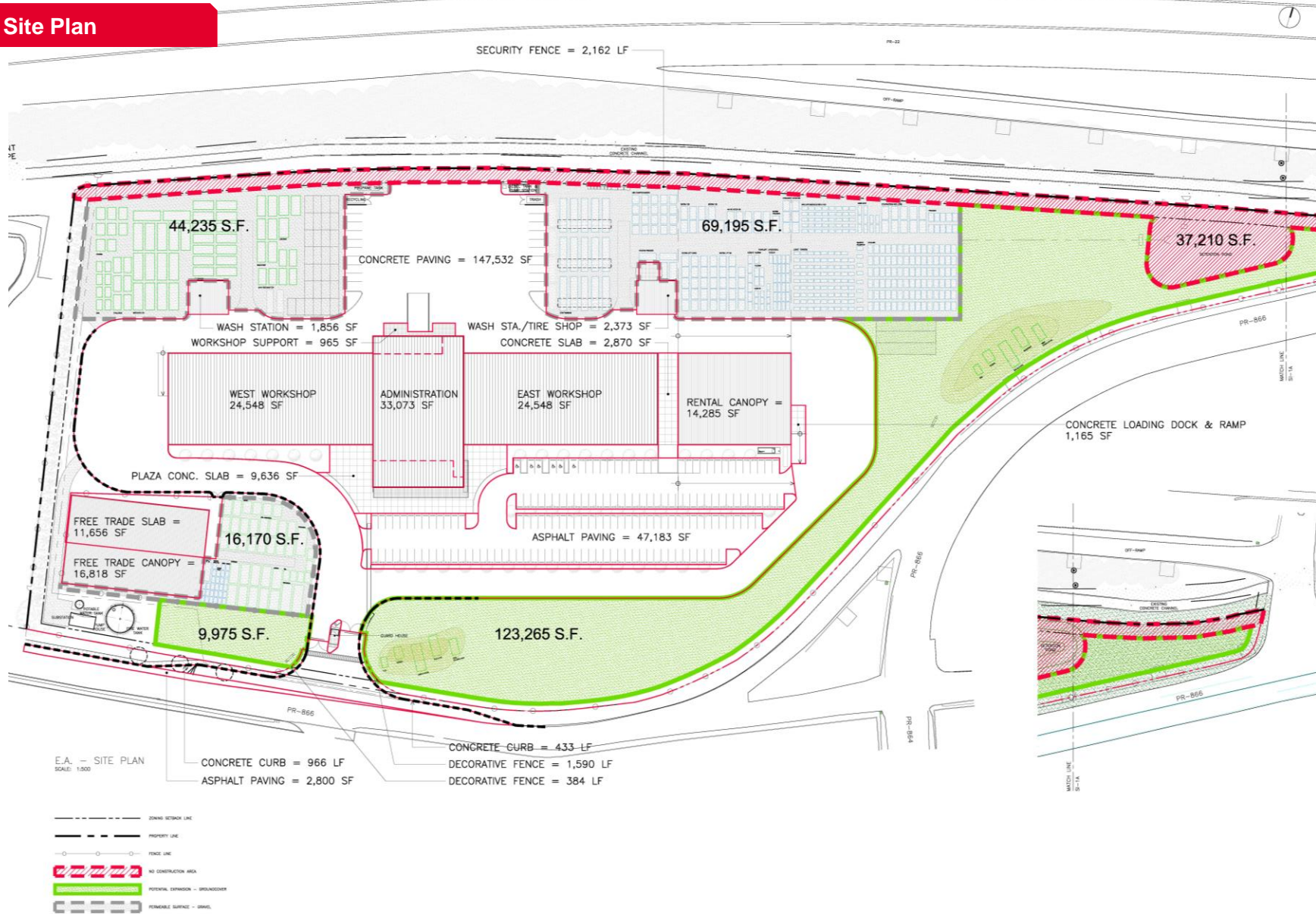
Looking West PR 866



Looking West

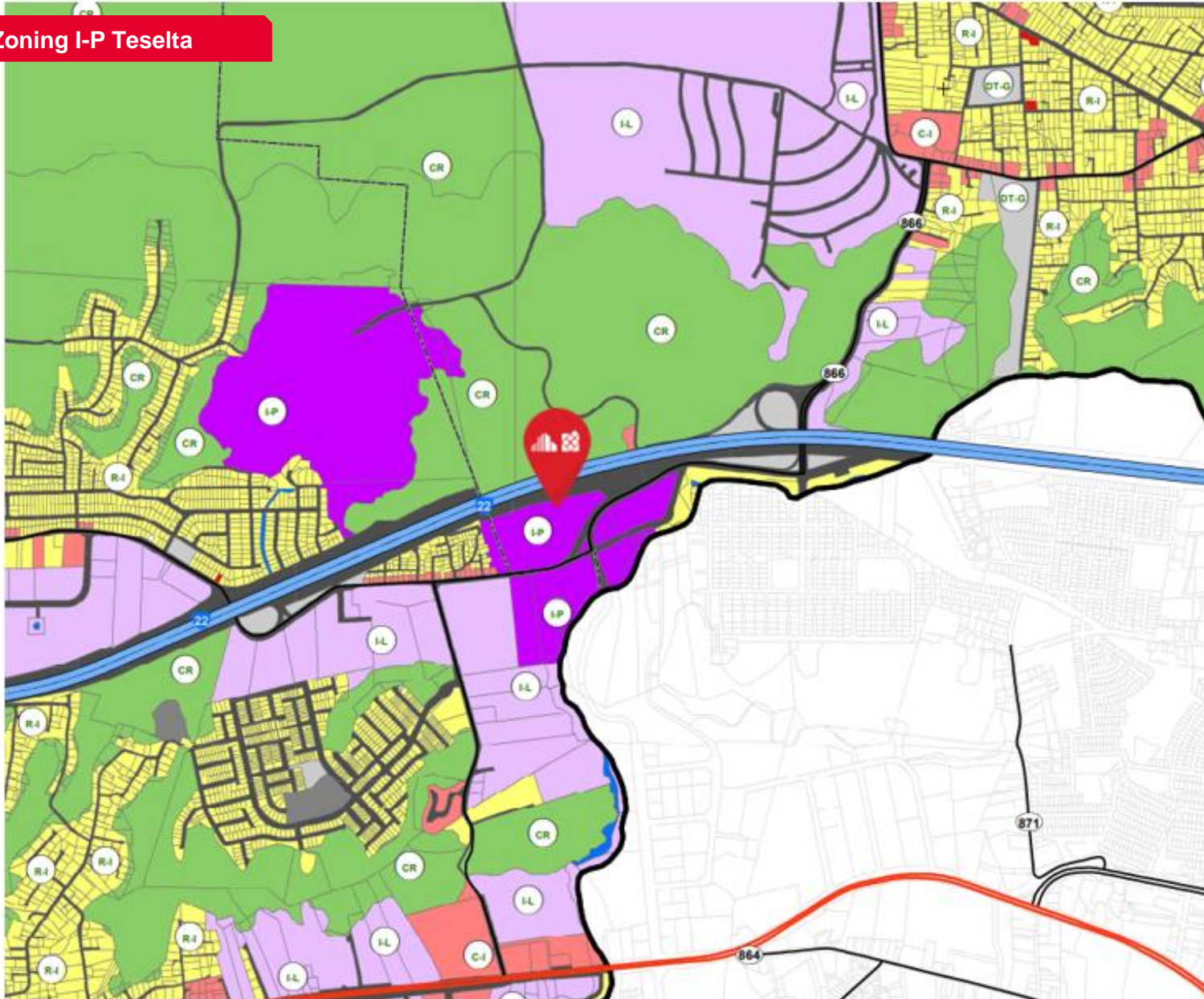


Site Plan



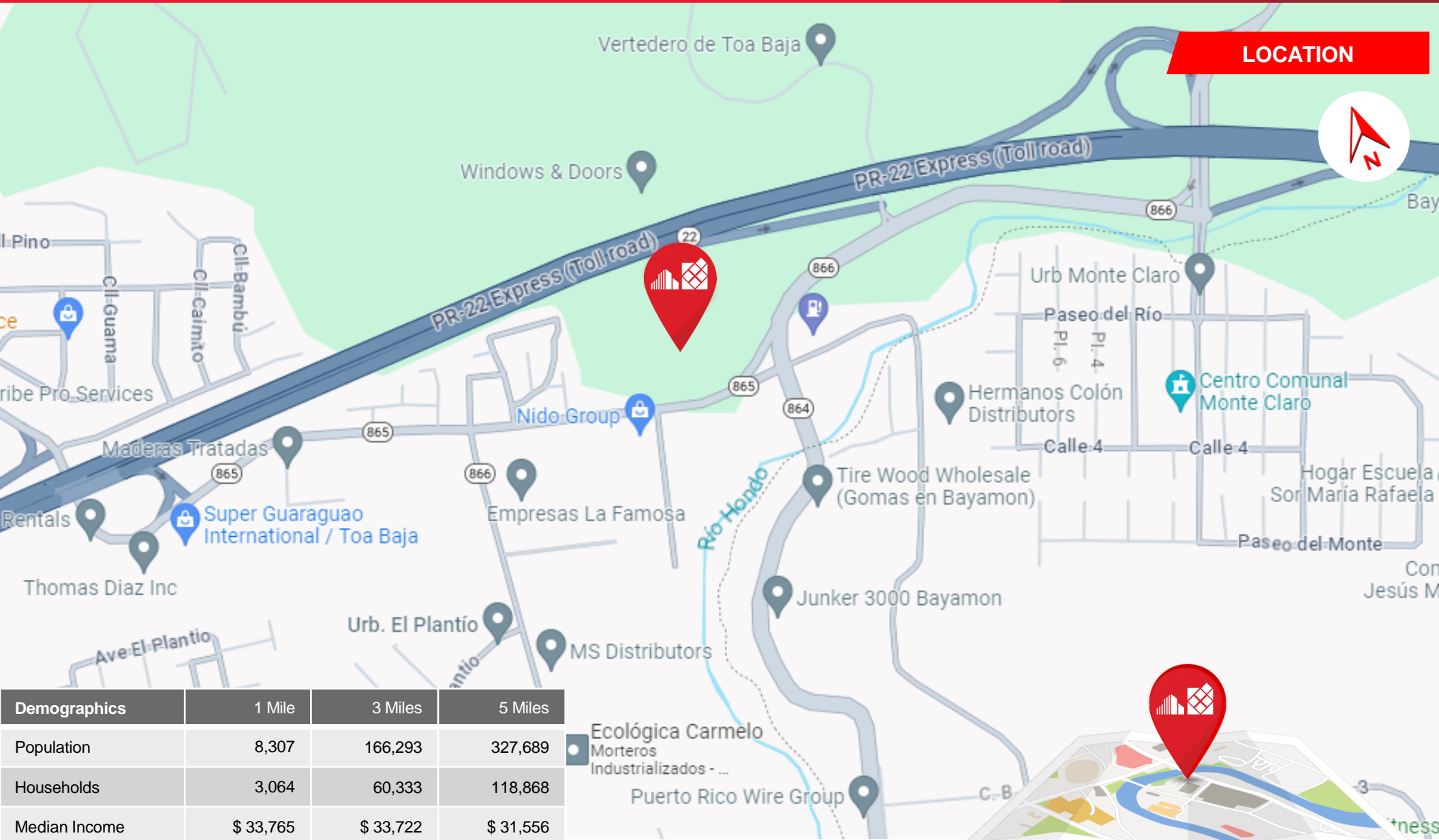
The depiction in the included photograph of any person, entity, sign, logo or property, other than Cushman & Wakefield's (C&W) client and the property offered by C&W, is incidental only, and not intended to connote any affiliation, connection, association, sponsorship or approval by or between that which is incidentally depicted by C&W or its client. This listing shall not be deemed an offer to lease, sublease or sell such property; and, in the event of any transaction for such property, no commission shall be earned or payable to any cooperating broker except if otherwise provided pursuant to the express terms, rates and conditions of C&W's agreement with its principal, if, as and when such commission (if any) is actually received from such principal. (A copy of the rates and conditions referred to above with respect to this property is available upon request.) Brokers representing purchasers or tenants must look to their clients for commissions. No warranty or representation, express or implied, is made as to the accuracy of the information contained herein, and same is submitted subject to errors omissions, change of price, rental and other conditions, withdrawal without notice, and to specific listing conditions, imposed by our principals.

Zoning I-P Teselta



Land for Sale in Toa Baja

PR-866, Km. 2.2, Candelaria and Sabana Seca Wards, Toa Baja, PR 00951



LOCATION



Demographics	1 Mile	3 Miles	5 Miles
Population	8,307	166,293	327,689
Households	3,064	60,333	118,868
Median Income	\$ 33,765	\$ 33,722	\$ 31,556
Average Income	\$ 49,456	\$ 47,083	\$ 44,284

[Click Here to Go To Map](#)

The depiction in the included photograph of any person, entity, sign, logo or property, other than Cushman & Wakefield's (C&W) client and the property offered by C&W, is incidental only, and not intended to connote any affiliation, connection, association, sponsorship or approval by or between that which is incidentally depicted by C&W or its client. This listing shall not be deemed an offer to lease, sublease or sell such property; and, in the event of any transaction for such property, no commission shall be earned or payable to any cooperating broker except if otherwise provided pursuant to the express terms, rates and conditions of C&W's agreement with its principal, if, as and when such commission (if any) is actually received from such principal. (A copy of the rates and conditions referred to above with respect to this property is available upon request.) Brokers representing purchasers or tenants must look to their clients for commissions. No warranty or representation, express or implied, is made as to the accuracy of the information contained herein, and same is submitted subject to errors omissions, change of price, rental and other conditions, withdrawal without notice, and to specific listing conditions, imposed by our principals.