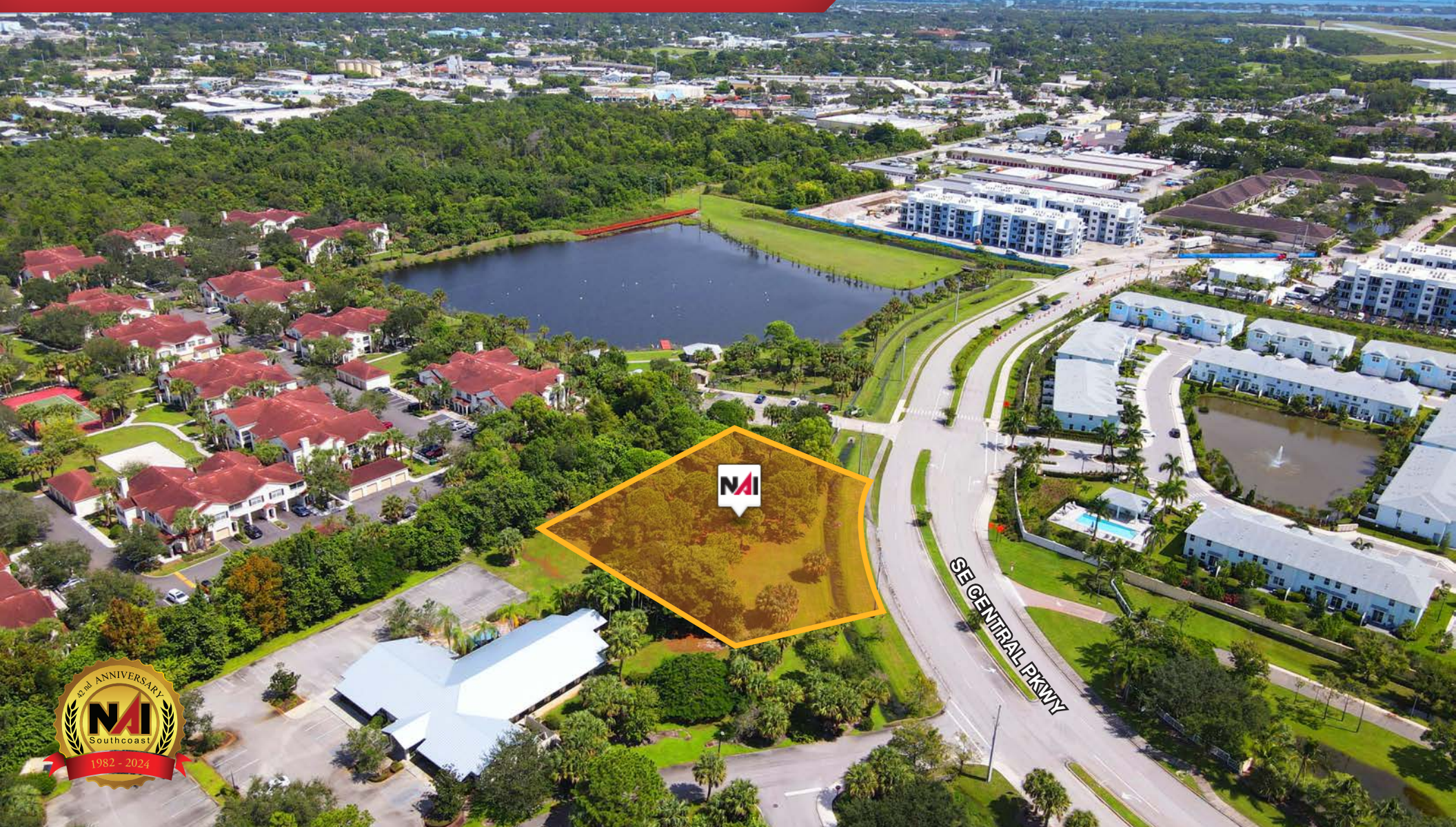


# ±.91 Acre CPUD Development Site

211 SE Central Parkway, Stuart, FL 34994

# NAI Southcoast



Presented by  
Reid Armor  
Sales Associate  
772.631.4248  
reid@naisouthcoast.com  
www.naisouthcoast.com

Boyd G. Bradfield, CCIM, SIOR  
Founder  
772.286.6292  
boyd@naisouthcoast.com  
www.naisouthcoast.com

FOR SALE:  
**\$750,000**

# ±.91 Acre CPUD Development Site

211 SE Central Parkway, Stuart, FL 34994

## Property Details

Address:	211 SE Central Parkway Stuart, FL 34994
Pricing:	\$750,000
Land Size:	±.91 Acres
Zoning:	CPUD
Future Land Use:	Commercial
Parcel ID:	09-38-41-026-000-00010-0

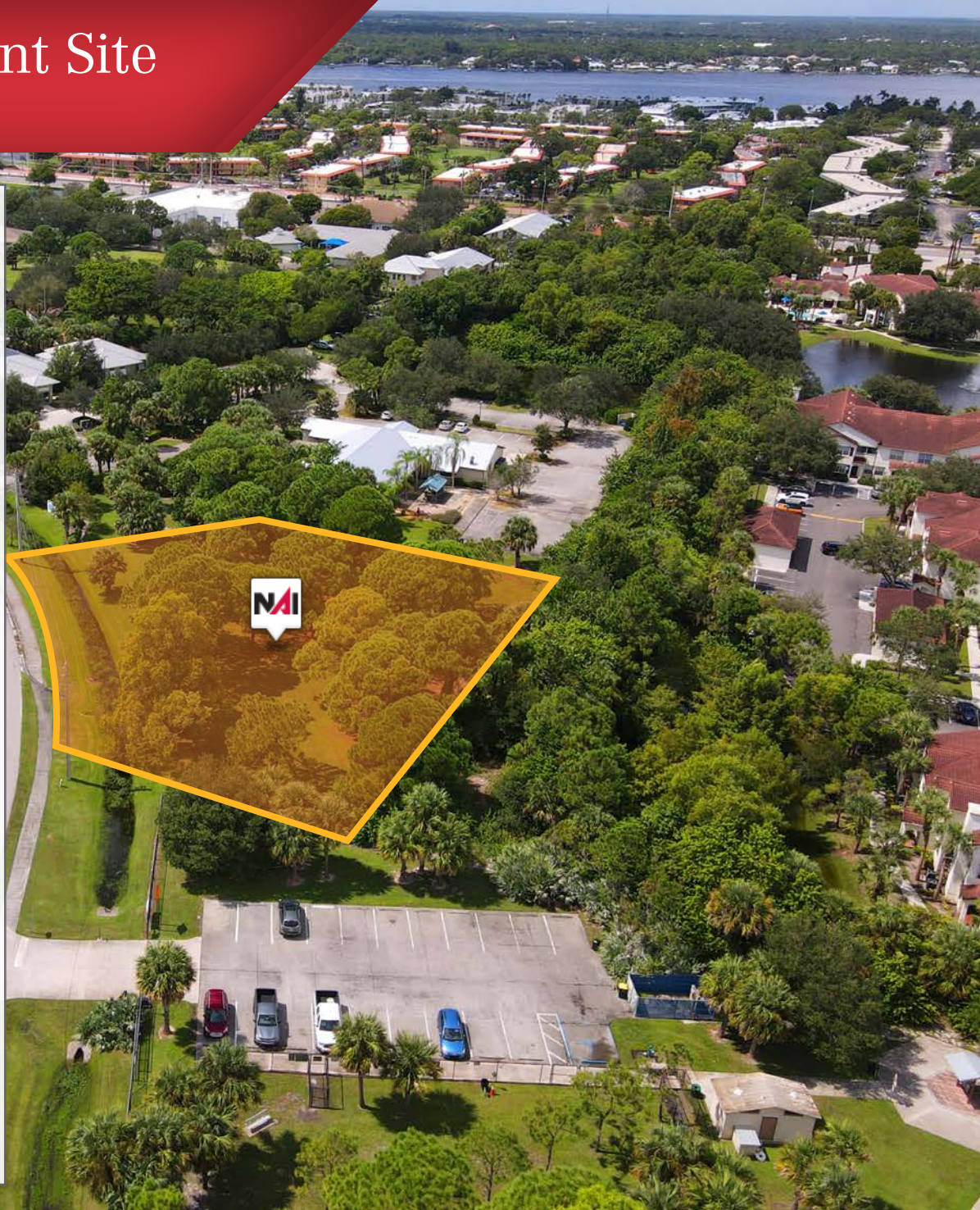
## Property Summary

Rare opportunity to acquire a small commercial parcel located within the city of Stuart! Located right off of Kanner Highway, a flexible CPUD Zoning allows for a variety of uses so this site provides a great opportunity to develop your dream office, medical building, or retail store.

The Seller is currently in the process of subdividing the parcel to deliver to a Buyer clear legal title of an approximately ±.91 acre parcel.

Just 5 minutes away from the amenities of Downtown Stuart as well as Palm City. This site also provides you easy access to the highly regarded schools of Martin County and nearby hospitals of the Cleveland Clinic. Furthermore, Kanner Highway places this project on a main artery to I-95 and Florida's Turnpike.

**For a full list of permissible uses included within CPUD zoning please contact the listing agents.**



# ±.91 Acre CPUD Development Site

211 SE Central Parkway, Stuart, FL 34994



# ±.91 Acre CPUD Development Site

211 SE Central Parkway, Stuart, FL 34994

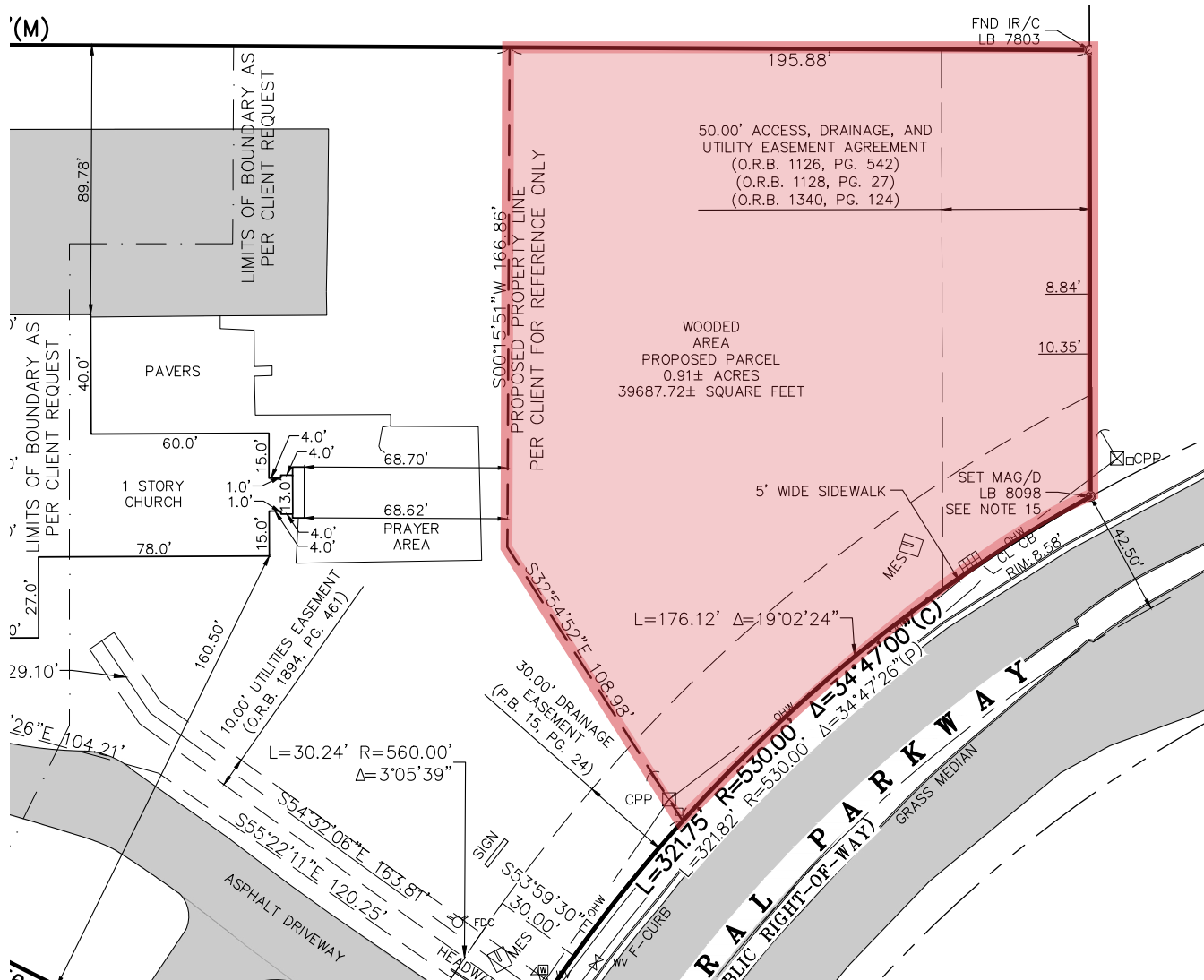


SE CENTRAL PKWY

# ±.91 Acre CPUD Development Site

211 SE Central Parkway, Stuart, FL 34994

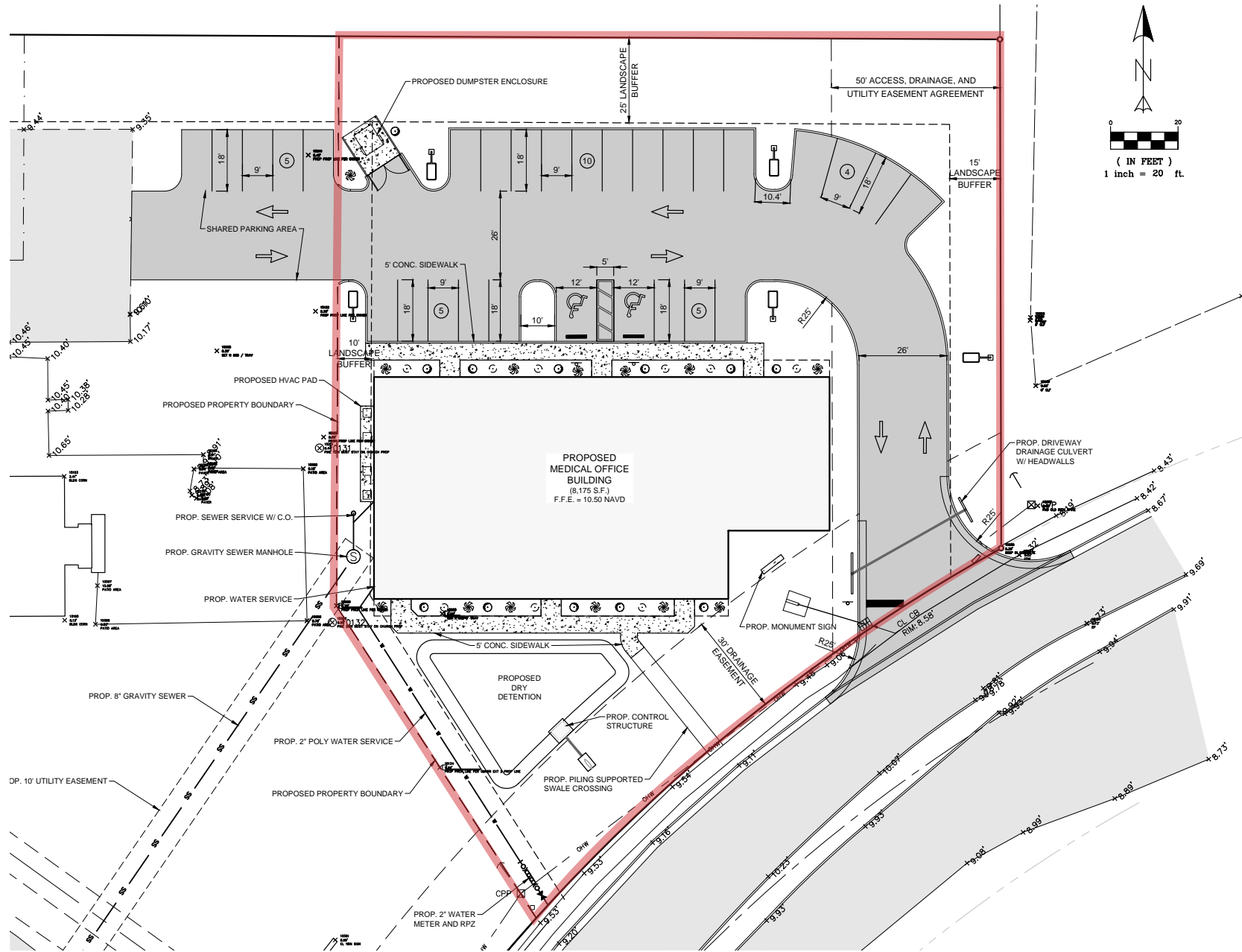
# Survey Sketch



# ±.91 Acre CPUD Development Site

211 SE Central Parkway, Stuart, FL 34994

# Proposed Site Plan

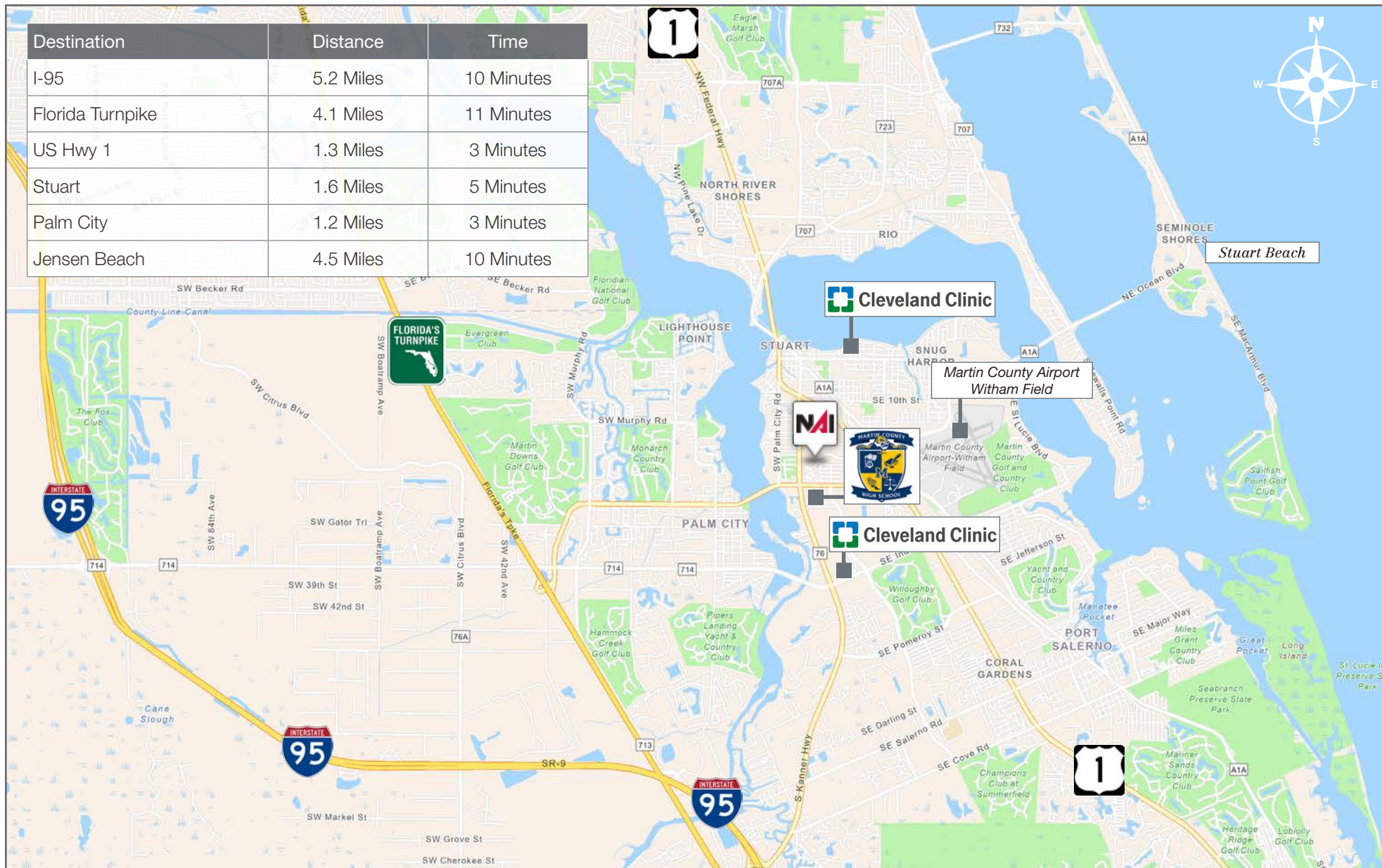


# ±.91 Acre CPUD Development Site

211 SE Central Parkway, Stuart, FL 34994

## Drive Time

Destination	Distance	Time
I-95	5.2 Miles	10 Minutes
Florida Turnpike	4.1 Miles	11 Minutes
US Hwy 1	1.3 Miles	3 Minutes
Stuart	1.6 Miles	5 Minutes
Palm City	1.2 Miles	3 Minutes
Jensen Beach	4.5 Miles	10 Minutes



# County Overview

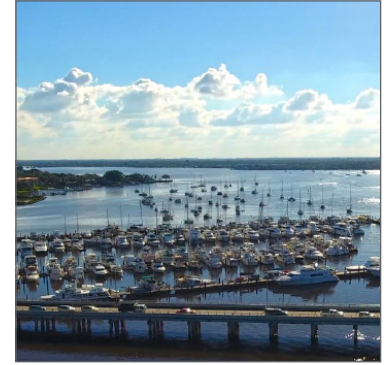
## Martin County, Florida

The cities that make up Martin County include Jensen Beach/Rio, Stuart/Sewall's Point, Hutchinson Island, Hobe Sound, Jupiter/ Tequesta, Palm City, Port Salerno and Indiantown. Martin County is a wonderful place to visit and live, with beaches, golf, fishing and boating. The County boasts arts, quaint downtowns with shops, gourmet dining, galleries, museums, historic places, festivals and more.

### *Martin County is for...*

The golf enthusiast... Martin County is home to over 35 world-class golf courses all within a 15-mile radius. The sun worshiper... The County offers its visitors and residents alike some of the finest beaches on the east coast. The discriminating arts shopper... More than 20 galleries participate in a monthly First Thursday gallery night. Many of these galleries are in the historic downtowns of Stuart, Jensen Beach, Port Salerno and Hobe Sound. The music lover... The historic Lyric Theatre offers a wide-array of first class talent nearly 300 days a year... This acoustically amazing theatre features concerts for all music lovers, from classical to rock and roll, and theatrical performances by local and national talent.

Mark your calendars for a plethora of events to look forward to in Martin County, Florida. The Stuart Air Show, Stuart Boat Show, ArtsFest, and the Martin County Fair are just some of the many events taking place throughout the year. The Treasure Coast Children's Museum, located at Indian Riverside Park, is a great place for kids and families, offering a water play area, fishing, and a riverfront view. Often, there are events in the park including concerts, orchid shows, and more. Indian Riverside Park also features the Maritime and Yachting Museum. Hutchinson Island is home to the Elliott Museum which celebrates the genius of innovation, creativity and the historical events of Martin County. Named after the prolific inventor Sterling Elliott, the museum hosts permanent exhibits showcasing Model A Trucks, early transportation, the history of Stuart and its surrounding regions, and baseball memorabilia. For the scientifically minded and curious kids, the Florida Oceanographic Coastal Center offers fun opportunities to learn about our local ecosystem.





# City Overview

## City of Stuart, Florida

Stuart, Florida is located on Florida's East Coast, which borders the St. Lucie River and West of the Indian River. The climate is pleasant with mild winters and warm summers. The annual average temperature is 72 degrees. Annual rainfall averages 60 inches.

Stuart is famed for its exceptional sailfishing and all other types of sport fishing. You can enjoy ocean fishing, river and bay fishing, and fresh water fishing. The North and South forks of the St. Lucie River are tropical wonderlands for cruises. Stuart has quaint older neighborhoods in the downtown area, including a mixture of townhomes and condominiums. Stuart's successful revitalization program has given the Downtown area a pleasant ambiance, with shops and restaurants lining the streets.

The top major employers are, Cleveland Clinic Hospital, Vought Aircraft, Municipal Government, and thousands of successful small businesses. The economy is driven by retail service, hospitality, construction and government sectors located throughout the city.

At the present time, Stuart is a growing community, annexing new properties north and south of the city, currently 6.25 square miles. Revitalization continues in the Potsdam section of the downtown area as well as North of the Roosevelt Bridge. Completed in 1996, the Roosevelt Bridge, is a prominent feature in the area, allowing for easy connectivity and accessibility to Stuart's Public Beaches.

*Presented By*



Reid Armor

Sales Associate  
772.631.4248  
reid@naisouthcoast.com

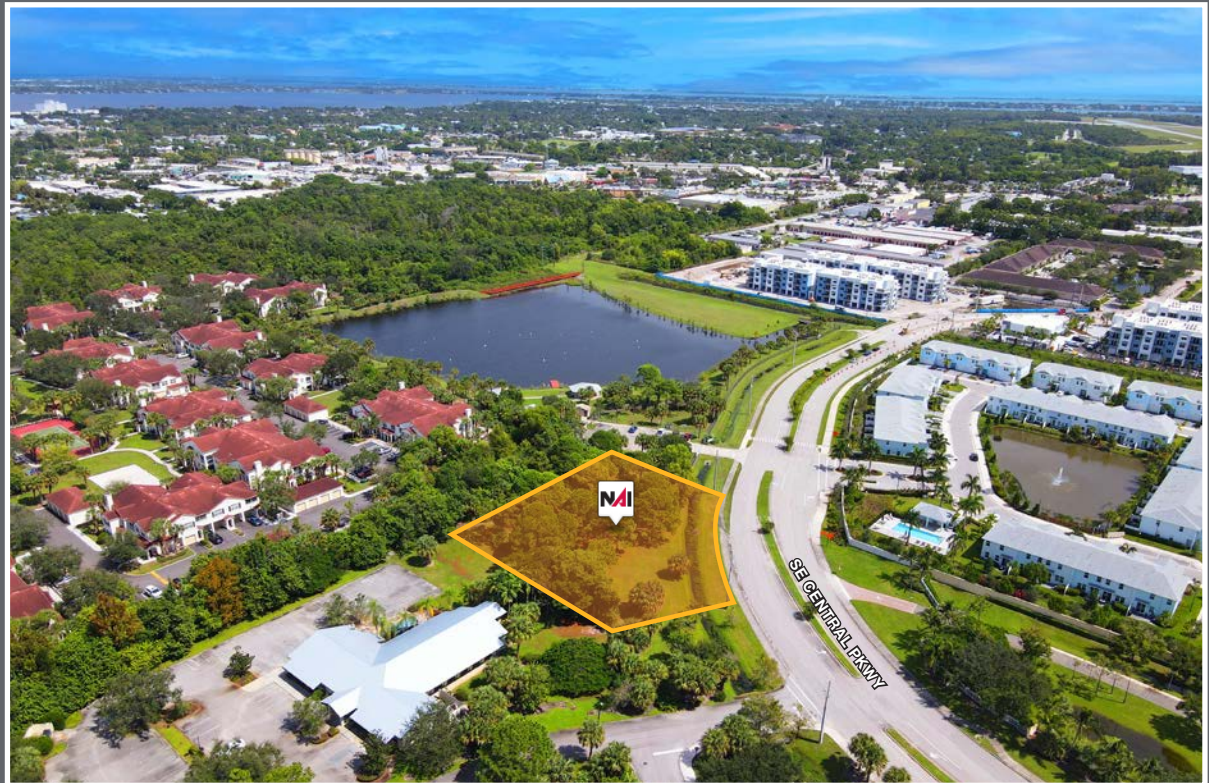


Boyd G. Bradfield, CCIM, SIO

Founder  
772.286.6292  
boyd@naisouthcoast.com

## ±.91 Acre CPUD Development Site

211 SE Central Parkway, Stuart, FL 34994



FOR SALE:

# \$750,000