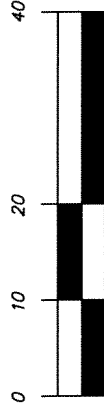


SURVEYOR'S NOTES

1. ELEVATIONS SHOWN HEREON ARE BASED ON NATIONAL GEODETIC VERTICAL DATUM AND ARE BASED ON BROWARD COUNTY ENGINEERING DIVISION BENCHMARK NO. 959A, ELEVATION 10.895, SQUARE CUT ON THE CENTER RAILING POST ON NORTH SIDE OF BRIDGE ON TERRA MAR DRIVE.
2. SEE DECLARATION OF CONDOMINIUM FOR DEFINITION OF 'COMMON ELEMENTS' AND 'UNITS'.
3. INSIDE DIMENSIONS SHOWN ARE FROM DRYWALL TO DRYWALL.

**"HIGH RIDGE COMMERCE CENTER II,
A CONDOMINIUM"**

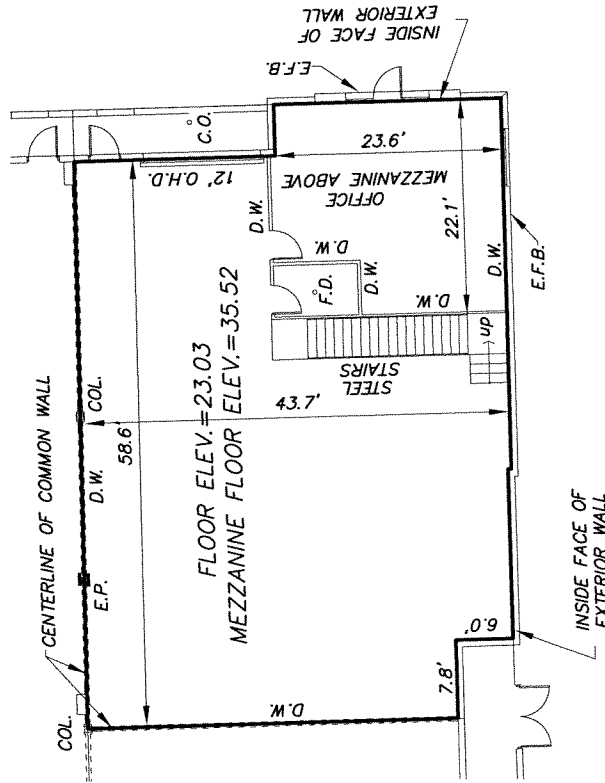
EXHIBIT 'B-1'



1" = 20'
GRAPHIC SCALE IN FEET

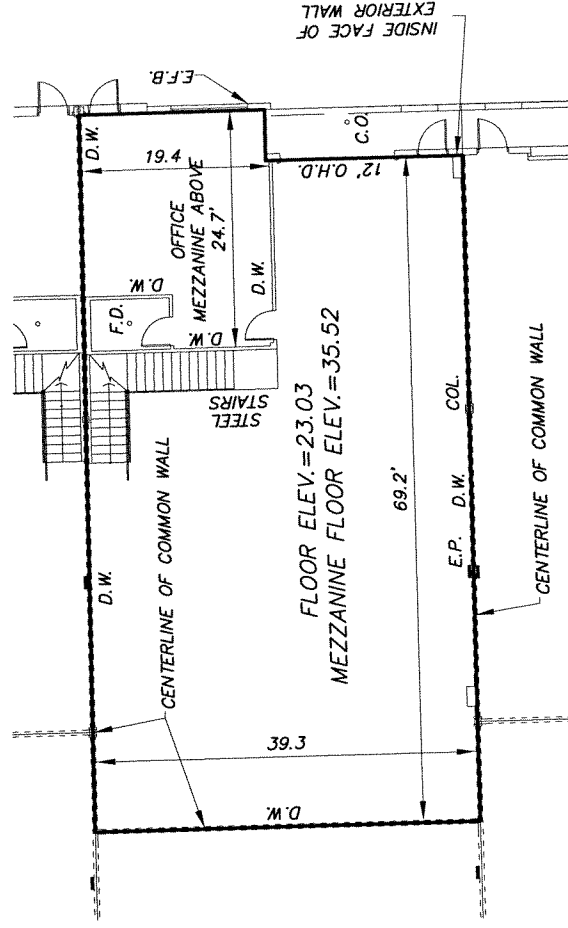
1-12	1-6
1-11	1-5
1-10	1-4
1-9	1-3
1-8	1-2
1-7	1-1

KEY PLAN
(NOT TO SCALE)



BUILDING UNIT 1-1

- 2,867 SQ. FT. (GROUND FLOOR EXTERIOR)
- 2,688 SQ. FT. (GROUND FLOOR INTERIOR)
- 542 SQ. FT. (MEZZANINE INTERIOR)
- 588 SQ. FT. (MEZZANINE EXTERIOR)



BUILDING UNIT 1-2

- 3,007 SQ. FT. (GROUND FLOOR EXTERIOR)
- 2,881 SQ. FT. (GROUND FLOOR INTERIOR)
- 488 SQ. FT. (MEZZANINE INTERIOR)
- 518 SQ. FT. (MEZZANINE EXTERIOR)

ABBREVIATIONS:

O.H.D.	= OVERHEAD DOOR
E.F.B.	= EXTERIOR FACE OF BUILDING
SQ.FT.	= SQUARE FEET
F.D.	= FLOOR DRAIN
E.P.	= ELECTRIC PANEL
D.W.	= DRYWALL FINISH
CONC.	= CONCRETE

TECH
Sun-Tech Engineering, Inc.
Engineering - Surveying - Planning
Certificate of Authorization Number LB 7019
1600 West Oakland Park Boulevard
Ft. Lauderdale, FL 33311
Phone (954) 777-3123
Fax (954) 777-3114

DATED THIS 8th, DAY OF APRIL, 2004.

Alexander G. Duchart
ALEXANDER G. DUCHART
PROFESSIONAL SURVEYOR & MAPPER
STATE OF FLORIDA REGISTRATION NO. 5998