



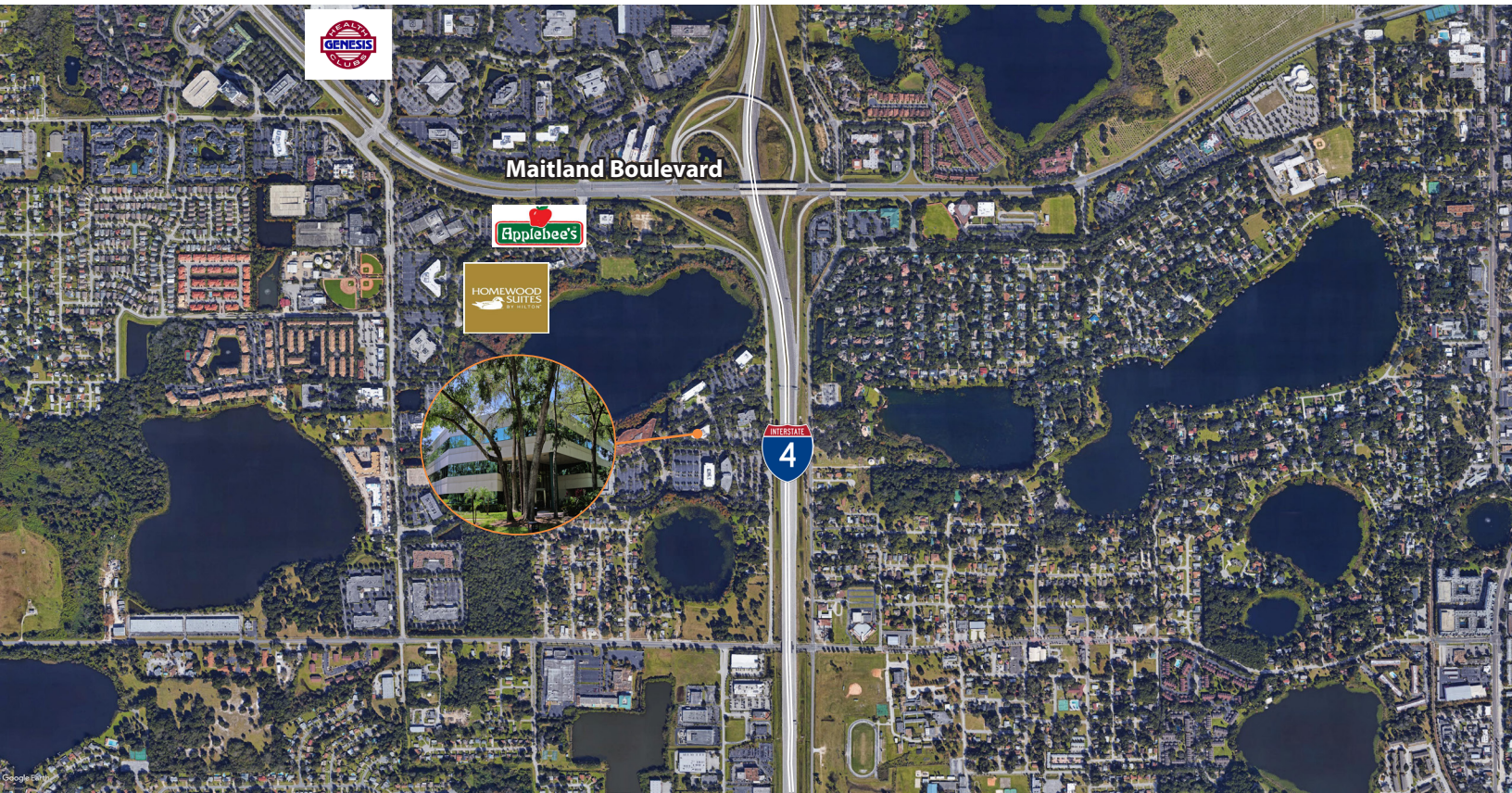
Property Highlights

- Park like setting with mature landscaping
- 1,002± sf - 9,593± sf available
- Convenient access to Interstate-4
- Minutes to Downtown Orlando
- First floor restrooms newly renovated / Second floor restroom renovations coming in 2024
- Nearby amenities include the Genesis Health Club, Sam Snead's Tavern and other restaurants
- Shared building conference room available in adjacent Lake Lucien Executive Center building
- Abundant parking

Emily Zinaich, Senior Vice President
D 407 440 6641
C 407 230 8797
emily.zinaich@avisonyoung.com

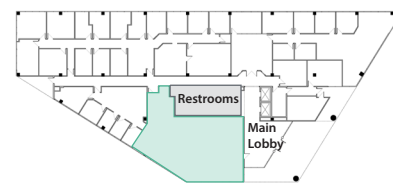
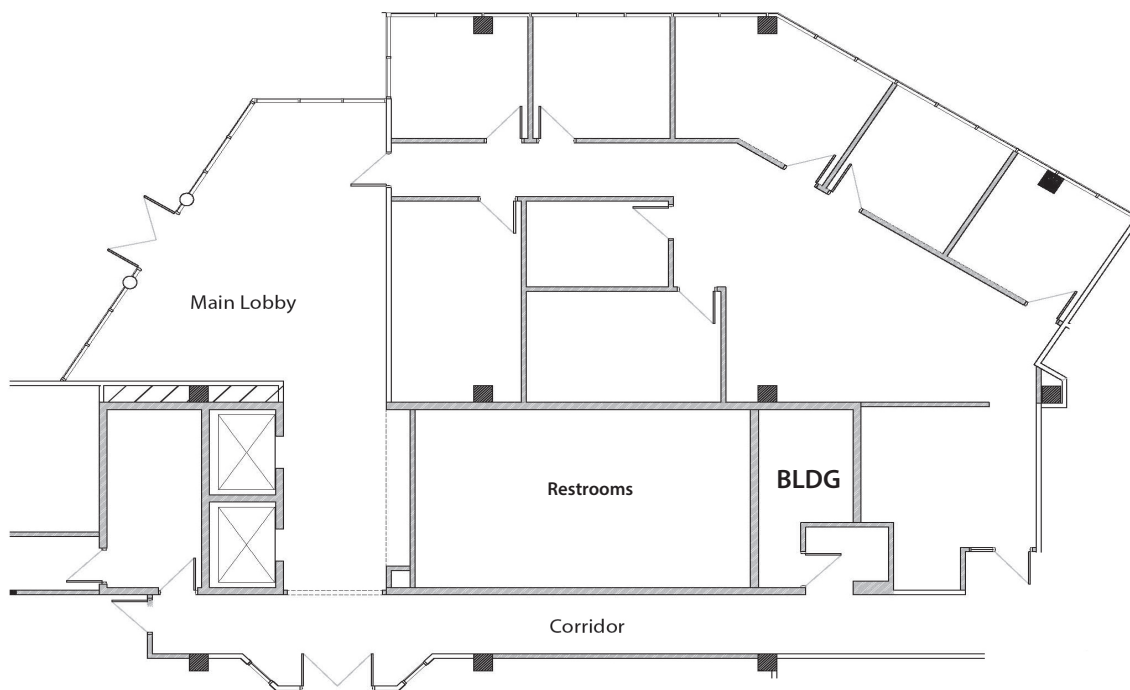
**AVISON
YOUNG**

For Lease
Lucien Green
2250 Lucien Way
Maitland, FL 32751



Emily Zinaich, Senior Vice President
D 407 440 6641
C 407 230 8797
emily.zinaich@avisonyoung.com

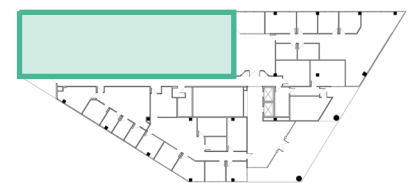
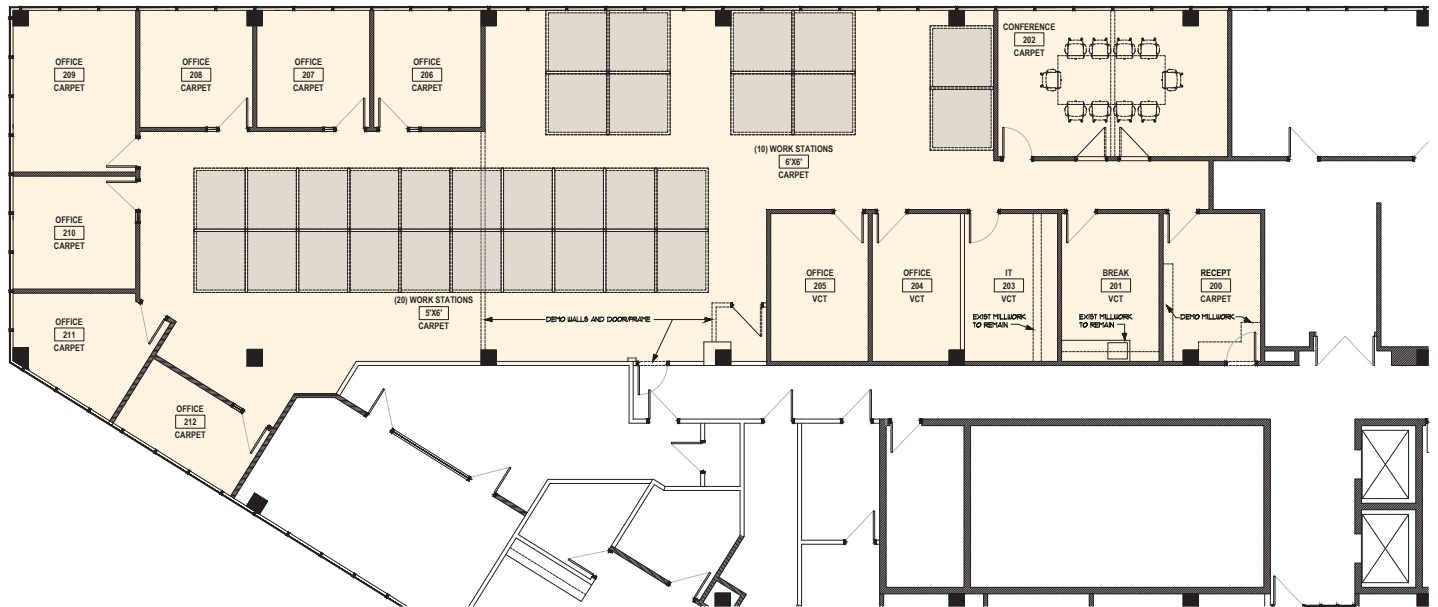
Suite 120 - 2,406± rsf



KEY PLAN

Emily Zinaich, Senior Vice President
D 407 440 6641
C 407 230 8797
emily.zinaich@avisonyoung.com

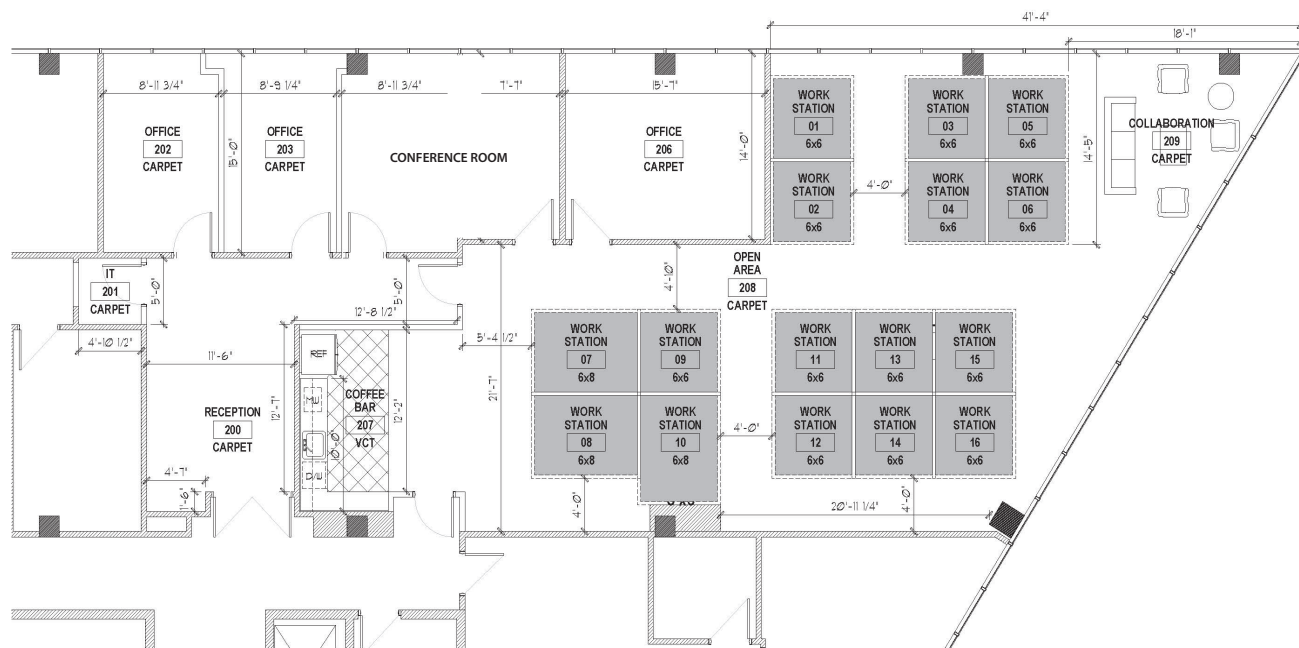
Suite 240 - 5,550± rsf



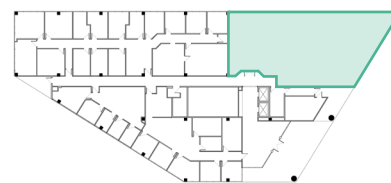
KEY PLAN

Emily Zinaich, Senior Vice President
D 407 440 6641
C 407 230 8797
emily.zinaich@avisonyoung.com

Suite 250 - 3,041± rsf
Available 10/01/24



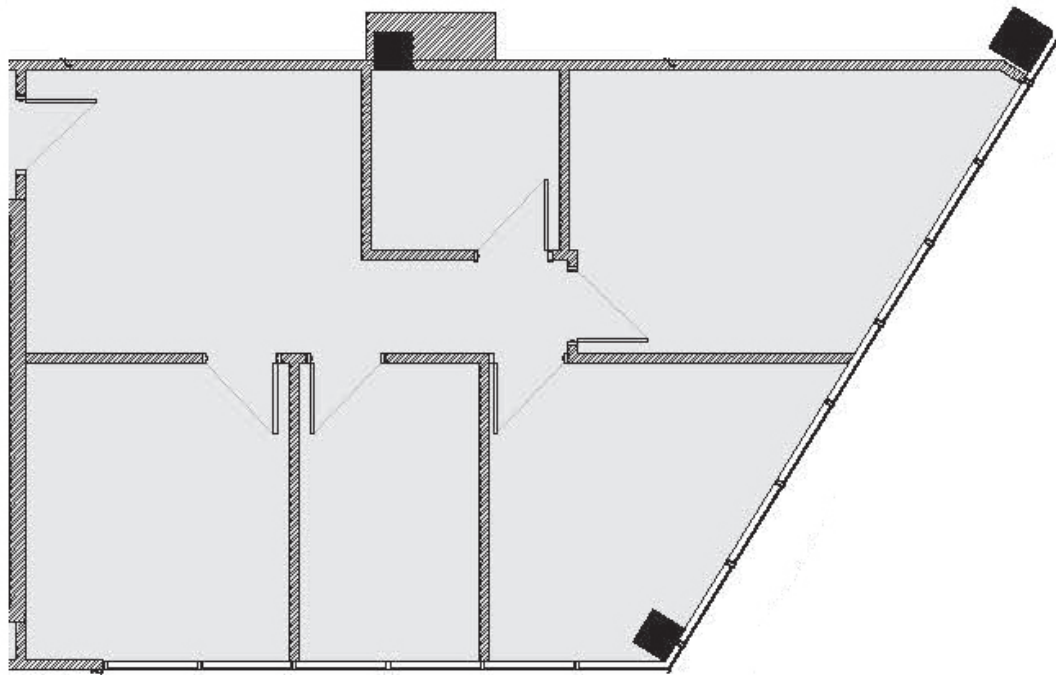
SAMPLE LAYOUT



KEY PLAN

Emily Zinaich, Senior Vice President
 D 407 440 6641
 C 407 230 8797
 emily.zinaich@avisonyoung.com

Suite 270 - 1,002± rsf



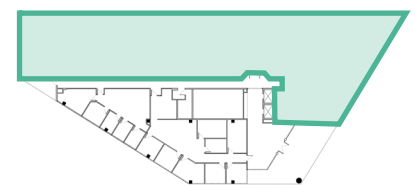
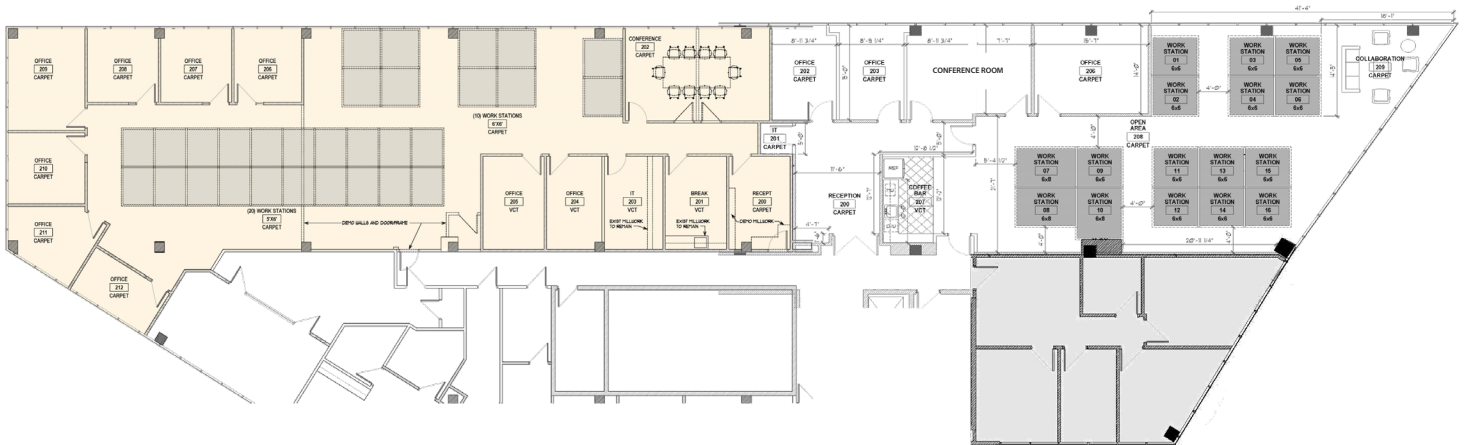
MOVE-IN READY



KEY PLAN

Emily Zinaich, Senior Vice President
D 407 440 6641
C 407 230 8797
emily.zinaich@avisonyoung.com

**Suite 240 - 270 - 9,593± rsf
Available 10/01/24**



KEY PLAN

Emily Zinaich, Senior Vice President
D 407 440 6641
C 407 230 8797
emily.zinaich@avisonyoung.com

Third Floor Suites



Emily Zinaich, Senior Vice President
D 407 440 6641
C 407 230 8797
emily.zinaich@avisonyoung.com