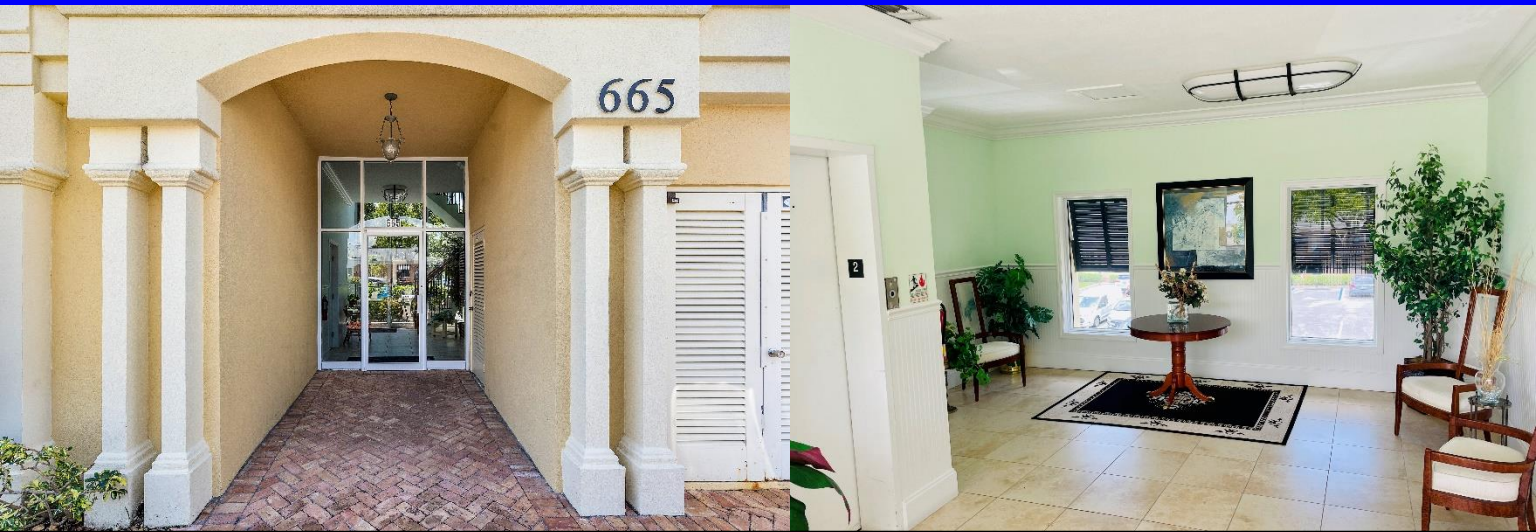


Impeccably Maintained Office Condo For Sale \$724,900 for Sale In Duval Court

665 SE 10 St. #201
Deerfield Beach, FL 33441



FOR SALE	2,035 Sq. Ft. Office Condo			
DESCRIPTION	PRICE REDUCED!! 2,035 Sq. Ft. office condo located in the highly desirable Duval Professional Centre. Centrally located with easy access to I-95, Sawgrass Expressway and FL Turnpike. This office condo contains 7 offices, conference room, oversized lobby/ waiting area, separate ADA bathroom, kitchen area with ample storage area and impact windows and doors. Affordably priced for the buyer seeking good visibility and high-income demographics.			
PROPERTY VIDEO	https://www.youtube.com/embed/f58SCffgEsA?rel=0			
LOCATION	Located in Duval Court at the Northwest Corner of Federal Hwy and SE 10 th Street.			
PARKING/ YEAR BUILT	9 Parking Spaces Built in 2006.			
PRICING	\$724,900 Price per sq. ft. \$356.21. Condo fees \$4,747 per quarter.			
ZONING/FOLIO	B1 4843-06-AM-0050			
Traffic Count	25,270 Cars per Day SE 10 Street			
DEMOGRAPHICS 2023		1 mile	3 mile	5 mile
	HH Population:	17,983	114,655	230,696
	Average HH Income:	\$80,318	\$84,346	\$88,742

Disclaimer: This offering subject to errors, omissions, prior sale or withdrawal without notice.

CAMPBELL & ROSEMURGY
COMMERCIAL REAL ESTATE

FOR MORE INFORMATION:

John D. McQueston

john@johnmcqueston.com • 561-706-7721 (cell)

www.johnmcqueston.com

1233 E. Hillsboro Blvd
Deerfield Beach, FL 33441

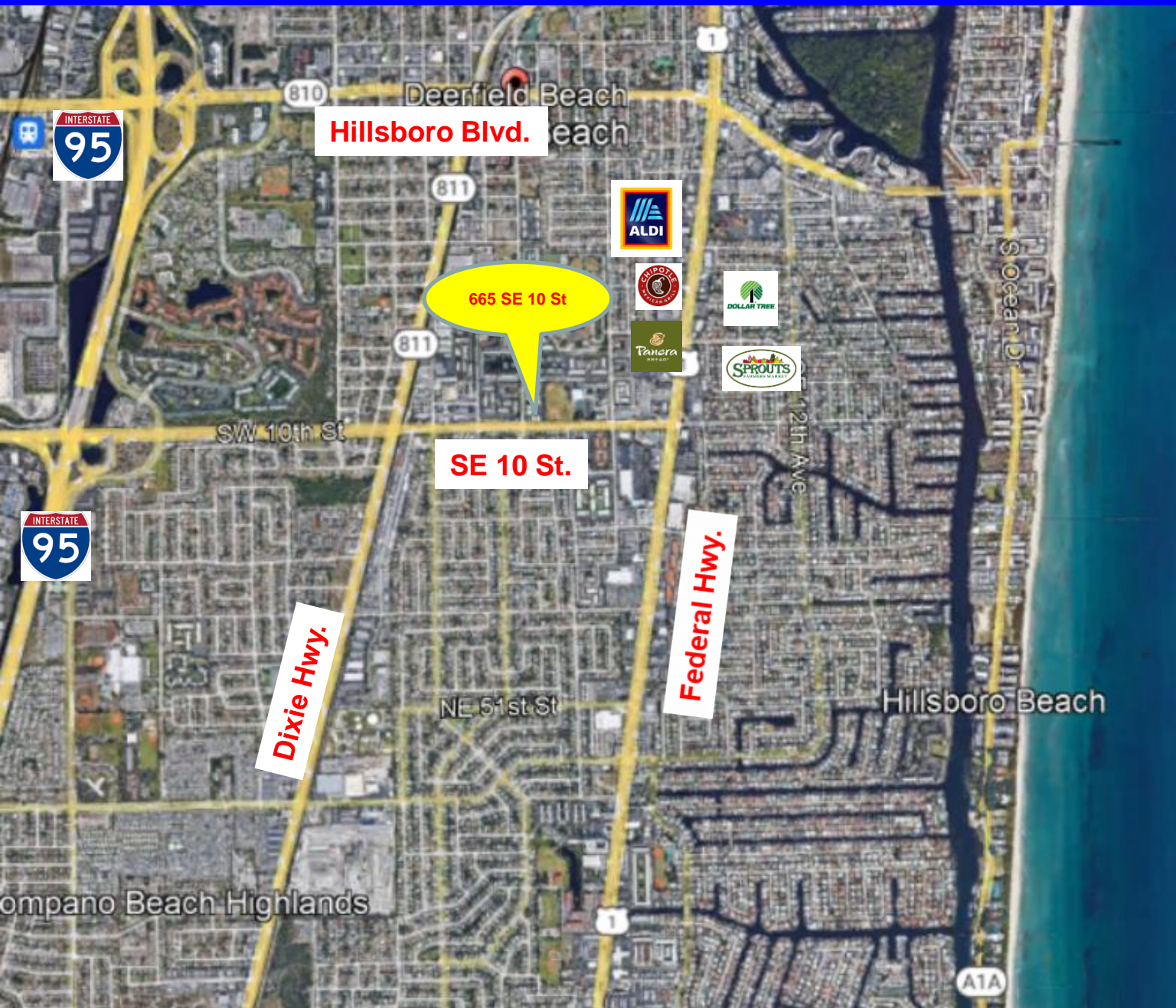
954.427.8686 T.
954.427.0117 F.

Location Map

For Sale \$724,900

665 SE 10 St. #201

Deerfield Beach, FL 33441



Disclaimer: This offering subject to errors, omissions, prior sale or withdrawal without notice.

CAMPBELL & ROSEMURGY
COMMERCIAL REAL ESTATE

FOR MORE INFORMATION:

John D. McQuestion

john@johnmcquestion.com • 561-706-7721 (cell)

www.johnmcquestion.com

1233 E. Hillsboro Blvd
Deerfield Beach, FL 33441

954.427.8686 T.
954.427.0117 F.

Additional Photos

For Sale \$724,900

665 SE 10 St. #201

Deerfield Beach, FL 33441

Common Area Lobby



Typical Office



Aerial View



Monument Signage



Disclaimer: This offering subject to errors, omissions, prior sale or withdrawal without notice.

CAMPBELL & ROSEMURGY
COMMERCIAL REAL ESTATE

FOR MORE INFORMATION:

John D. McQuestion

john@johnmcquestion.com • 561-706-7721 (cell)

www.johnmcquestion.com

1233 E. Hillsboro Blvd
Deerfield Beach, FL 33441

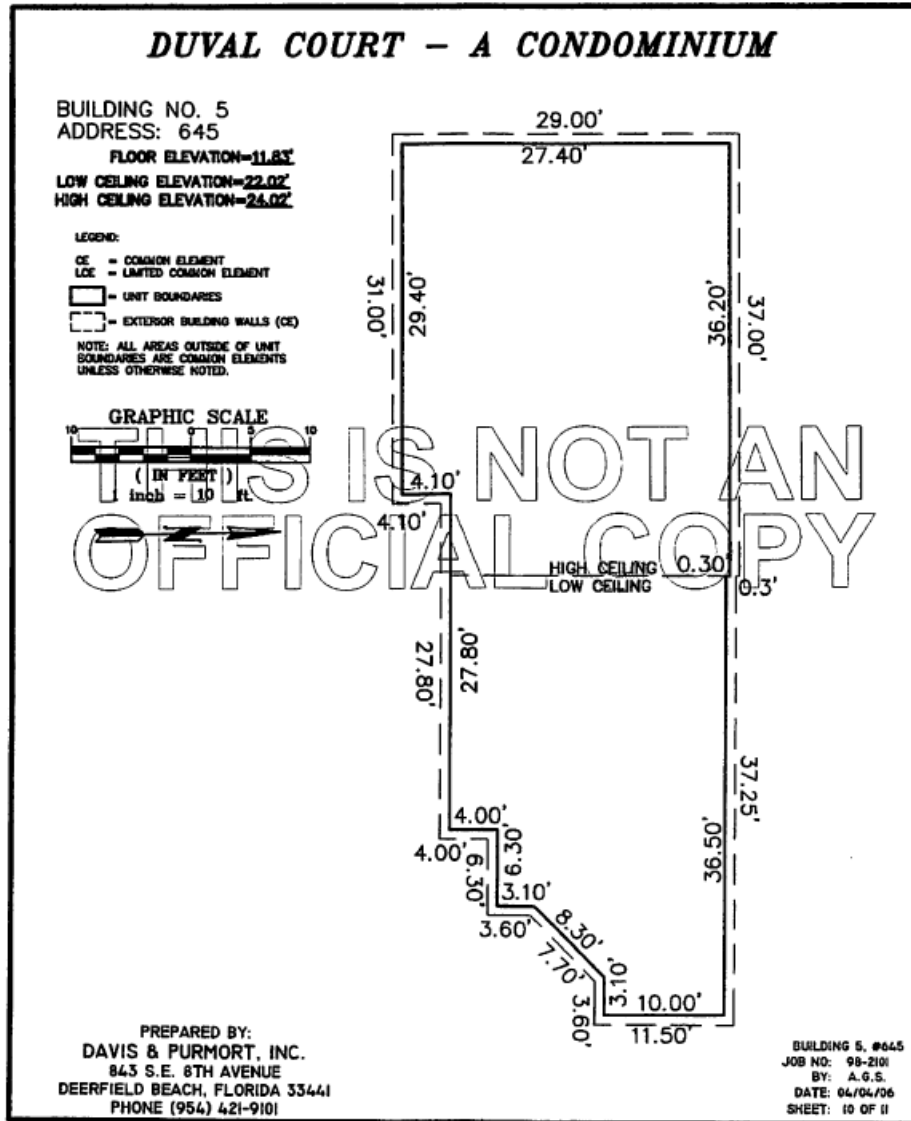
954.427.8686 T.
954.427.0117 F.

Property Dimensions Floorplan

For Sale \$749,000

665 SE 10 St. #201

Deerfield Beach, FL 33441



Disclaimer: This offering subject to errors, omissions, prior sale or withdrawal without notice.

CAMPBELL & ROSEMURGY
COMMERCIAL REAL ESTATE

FOR MORE INFORMATION:

John D. McQuestion

john@johnmcquestion.com • 561-706-7721 (cell)

www.johnmcquestion.com

1233 E. Hillsboro Blvd
Deerfield Beach, FL 33441

954.427.8686 T.
954.427.0117 F.