



PROPERTY DESCRIPTION

Discover the freedom and financial wisdom of owning your retail or office space at The Point on Plant Street, where every detail is designed for your success and satisfaction. Construction expected to begin 2024 with three office spaces and three retail spaces to be delivered in grey shell condition in early 2024. Own a space that you can customize to perfectly fit your business needs and personal style. Create an environment that reflects your brand and vision.

Located in the heart of Winter Garden, benefit from high visibility and easy access to major roads, enhancing your business's exposure and accessibility. Be a part of a dynamic community, where businesses flourish in a vibrant, pedestrian-friendly neighborhood. Engage with a close-knit community of fellow business owners. Together, you can shape the future of East Winter Garden.

The Point on Plant Street isn't just a location; it's a smart business decision. Choose ownership. Choose growth. Choose The Point.

RETAIL

Suite 102 - 2419 SF - Mosaic Hair Studio & Blowout Bar
Suite 101 - 2424 SF - available
Suite 100 - 2910 SF available

OFFICE

Suite 200 - 2963 SF - available
Suite 201 - 2935 SF - available
Suite 202 - 3304 SF - available

OFFERING SUMMARY

Sale Price:	\$1,950,000
Number of Units:	6
Lot Size:	1.6 Acres
Building Size:	2,910 SF

DEMOGRAPHICS	0.5 MILES	1 MILE	1.5 MILES
Total Households	474	2,155	5,201
Total Population	1,214	5,902	13,483
Average HH Income	\$57,937	\$63,541	\$66,354

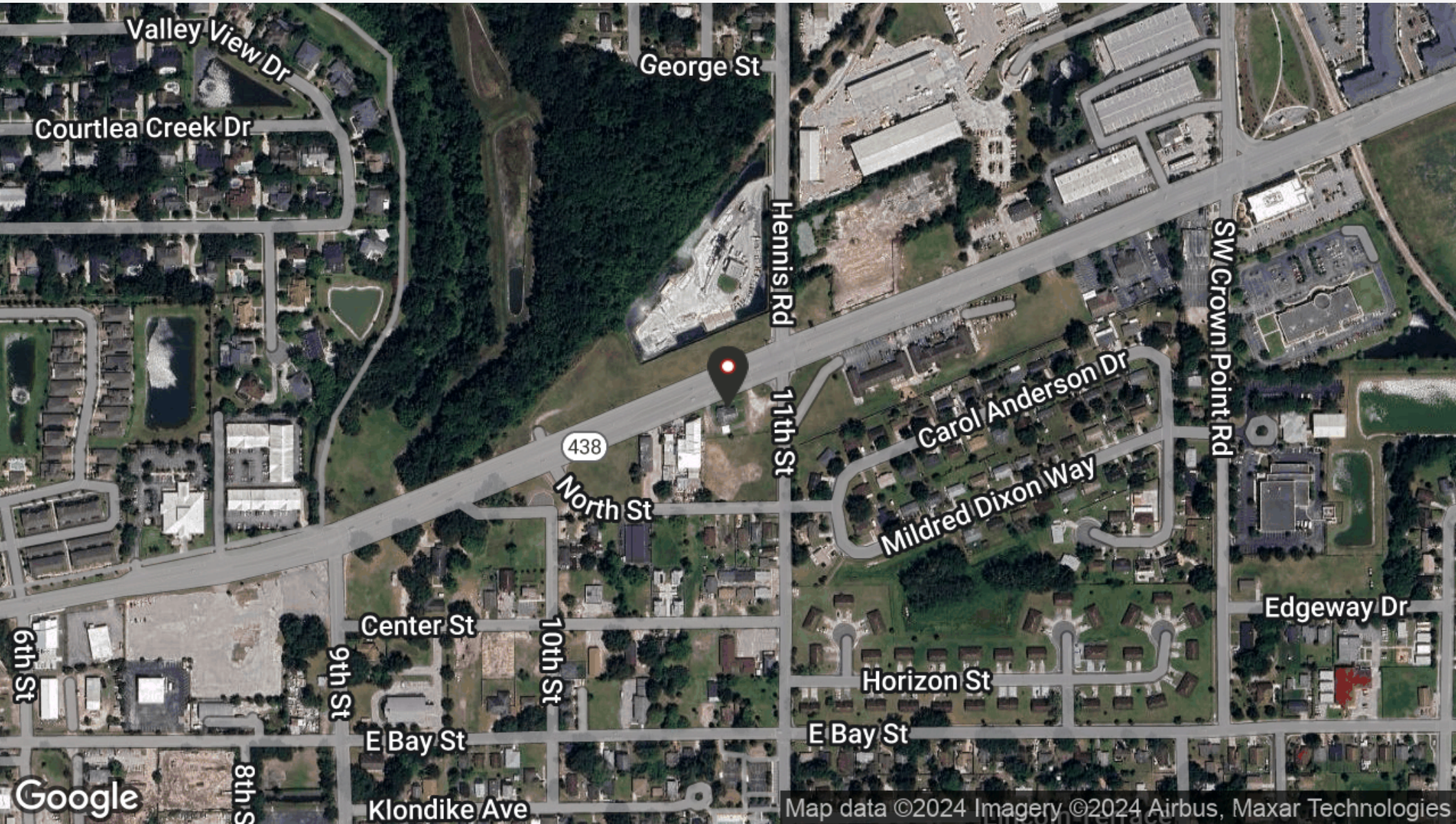


Amy Calandrino, CCIM, SIOR
CEO/Founding Broker
407.641.2221
amy@beyondcommercial.com

THE POINT ON PLANT ST

The Point On Plant St
996 E. Plant St, Suite 100 Winter Garden, FL 34787

RETAIL BUILDING FOR SALE



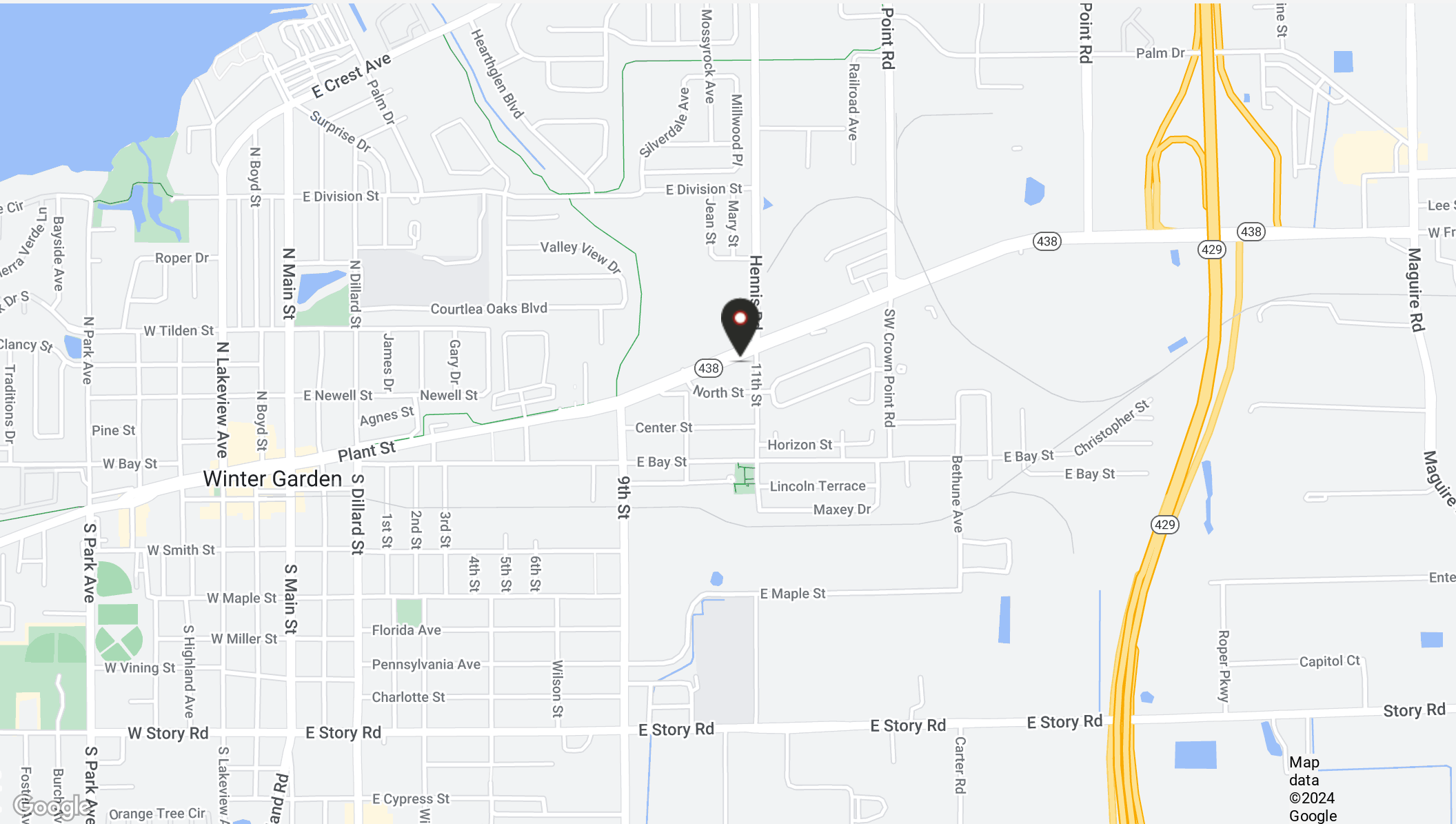
BEYOND
COMMERCIAL

Amy Calandrino, CCIM, SIOR
CEO/Founding Broker
407.641.2221
amy@beyondcommercial.com

THE POINT ON PLANT ST

The Point On Plant St
996 E. Plant St, Suite 100 Winter Garden, FL 34787

RETAIL BUILDING FOR SALE

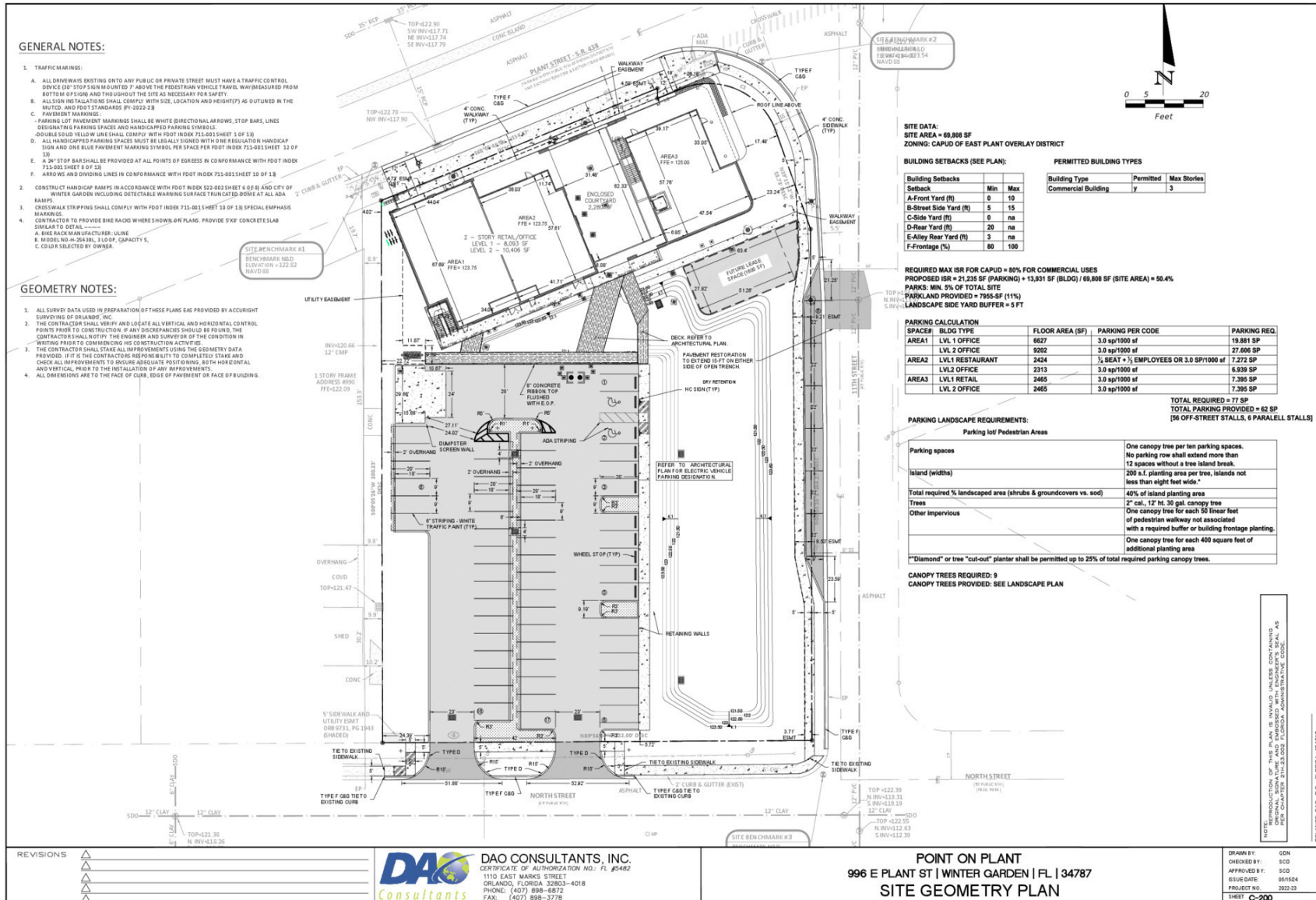


Amy Calandrino, CCIM, SIOR
CEO/Founding Broker
407.641.2221
amy@beyondcommercial.com

THE POINT ON PLANT ST

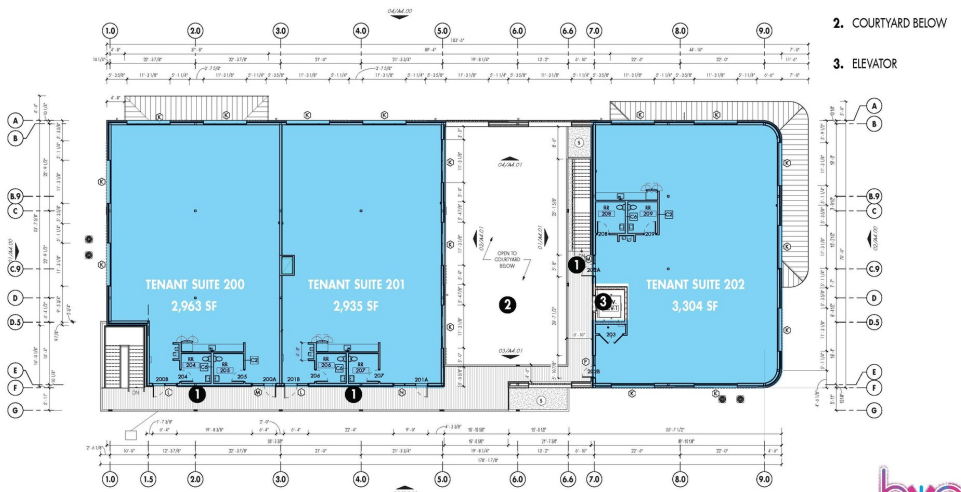
The Point On Plant St
996 E. Plant St, Suite 100 Winter Garden, FL 34787

RETAIL BUILDING FOR SALE



Amy Calandrino, CCIM, SIOR
CEO/Founding Broker
407.641.2221
amy@beyondcommercial.com

LEVEL 2 OFFICE SUITES

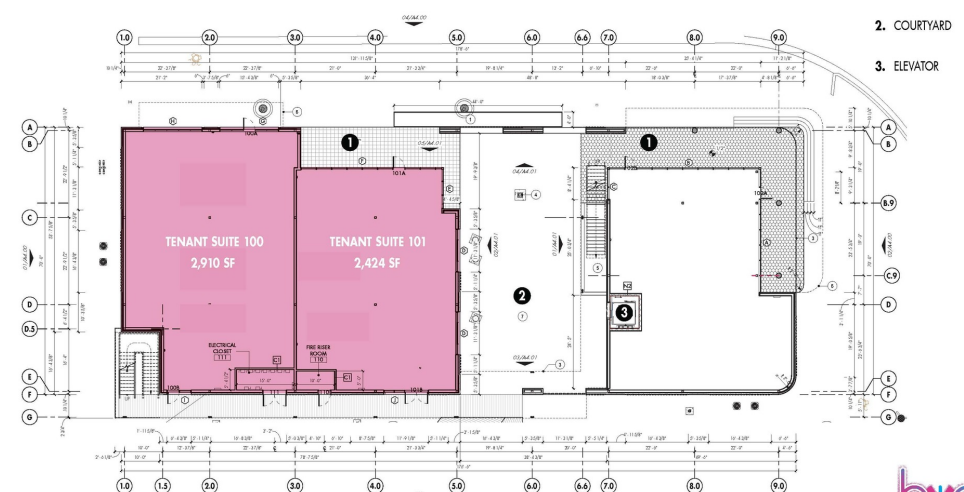


1. INDIVIDUALIZED OFFICE STOREFRONT
2. COURTYARD BELOW
3. ELEVATOR



3 of 21

LEVEL 1 RETAIL SUITES



1. FRONT PORCH
2. COURTYARD
3. ELEVATOR



2 of 21

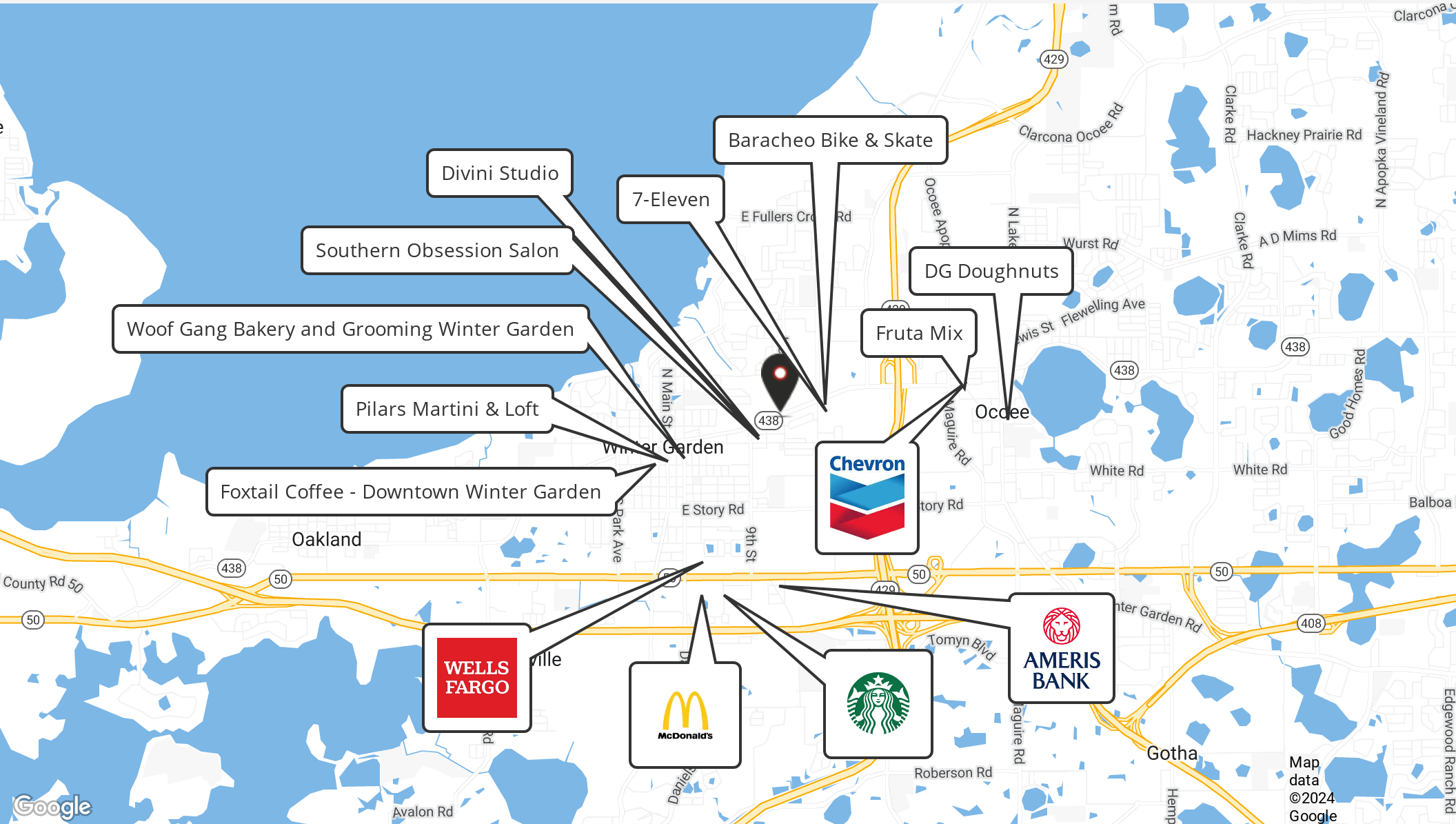


Amy Calandrino, CCIM, SIOR
CEO/Founding Broker
407.641.2221
amy@beyondcommercial.com

THE POINT ON PLANT ST

The Point On Plant St
996 E. Plant St, Suite 100 Winter Garden, FL 34787

RETAIL BUILDING FOR SALE

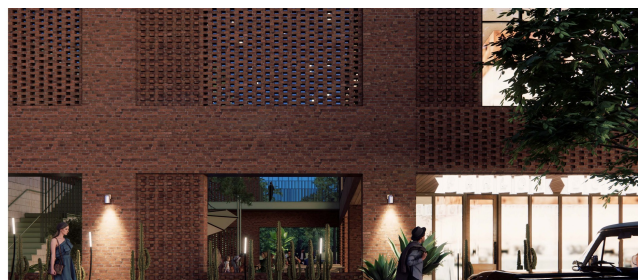
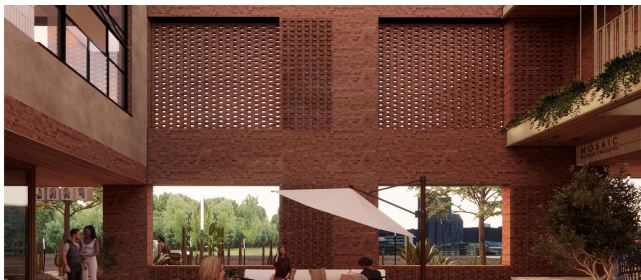
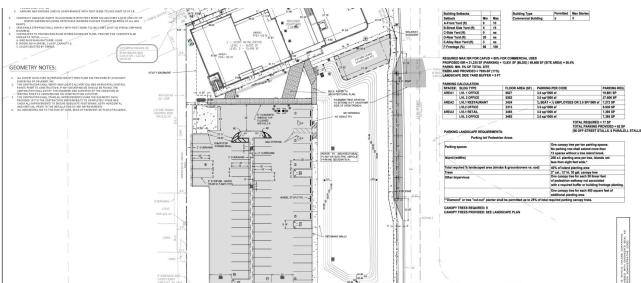
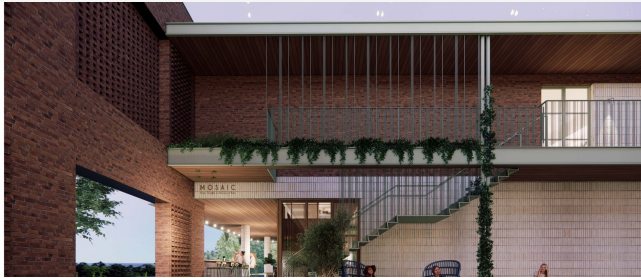


Amy Calandrino, CCIM, SIOR
CEO/Founding Broker
407.641.2221
amy@beyondcommercial.com

THE POINT ON PLANT ST

The Point On Plant St
996 E. Plant St, Suite 100 Winter Garden, FL 34787

RETAIL BUILDING FOR SALE



Amy Calandrino, CCIM, SIOR
CEO/Founding Broker
407.641.2221
amy@beyondcommercial.com

THE POINT ON PLANT ST

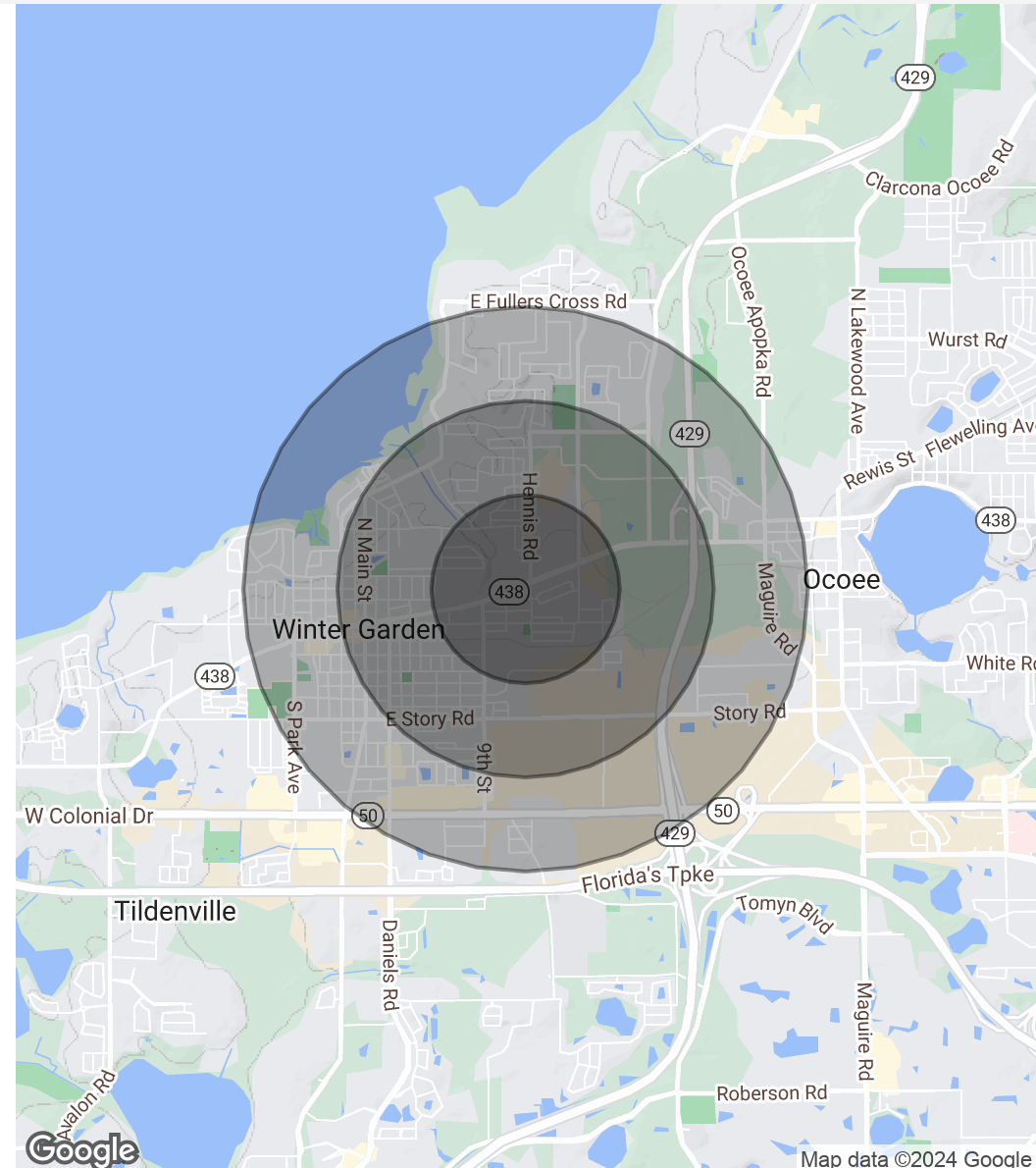
The Point On Plant St
996 E. Plant St, Suite 100 Winter Garden, FL 34787

RETAIL BUILDING FOR SALE

POPULATION	0.5 MILES	1 MILE	1.5 MILES
Total Population	1,214	5,902	13,483
Average Age	47.0	43.6	41.9
Average Age (Male)	40.6	37.8	35.8
Average Age (Female)	51.4	48.7	46.0

HOUSEHOLDS & INCOME	0.5 MILES	1 MILE	1.5 MILES
Total Households	474	2,155	5,201
# of Persons per HH	2.6	2.7	2.6
Average HH Income	\$57,937	\$63,541	\$66,354
Average House Value	\$164,722	\$182,061	\$206,332

* Demographic data derived from 2020 ACS - US Census



Map data ©2024 Google



Amy Calandrino, CCIM, SIOR
CEO/Founding Broker
407.641.2221
amy@beyondcommercial.com