

FOR LEASE

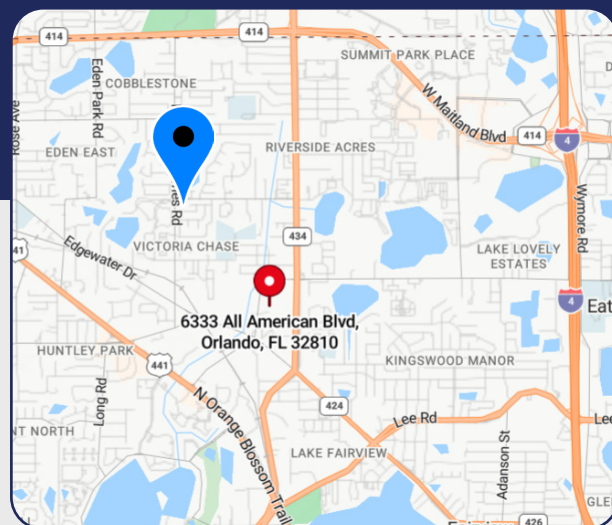


## DOCK HIGH WAREHOUSE

6335 All American Boulevard, Orlando, FL 32810

### 11,400 SF AVAILABLE

- > 11,400 SF warehouse space with 1,200 SF of office space
- > Two 10' x 12' dock high doors
- > One 10' x 10' dock high door
- > Excellent truck court
- > Heavy power
- > 20' clear height at eve
- > 85' bay depth
- > Septic service
- > Two restrooms
- > Good parking
- > Zoned I-1, Orange County
- > Gross lease - tenant pays utilities and garbage only
- > Move-in ready
- > **\$11,400.00/month plus sales tax**



**Bill Bywater, CCIM**  
D 407.206.5736  
O 407.206.7300  
bill@bywater.com

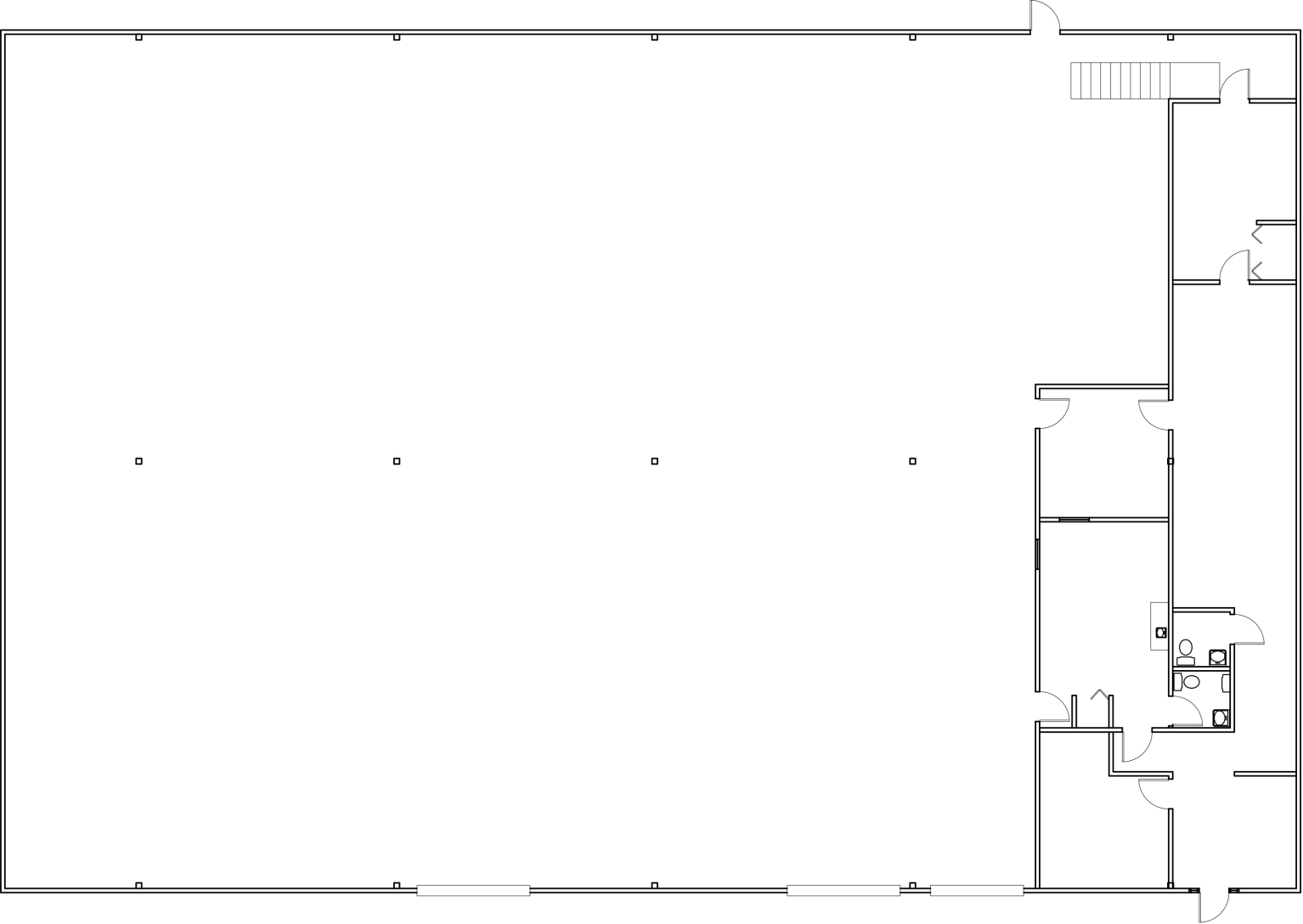


1209 Edgewater Drive  
Suite 100  
Orlando, FL 32804  
407.206.7300 Main  
www.bywater.com

# DOCK HIGH WAREHOUSE

6335 All American Boulevard, Orlando, FL 32810

## FLOORPLAN



1209 Edgewater Drive, Suite 100 | Orlando, FL 32804 | 407.206.7300 | [www.bywater.com](http://www.bywater.com)

The information contained herein was obtained from sources deemed reliable and is assumed to be correct. It is not guaranteed by The Bywater Company.

# DOCK HIGH WAREHOUSE

6335 All American Boulevard, Orlando, FL 32810



1209 Edgewater Drive, Suite 100 | Orlando, FL 32804 | 407.206.7300 | [www.bywater.com](http://www.bywater.com)

The information contained herein was obtained from sources deemed reliable and is assumed to be correct. It is not guaranteed by The Bywater Company.