

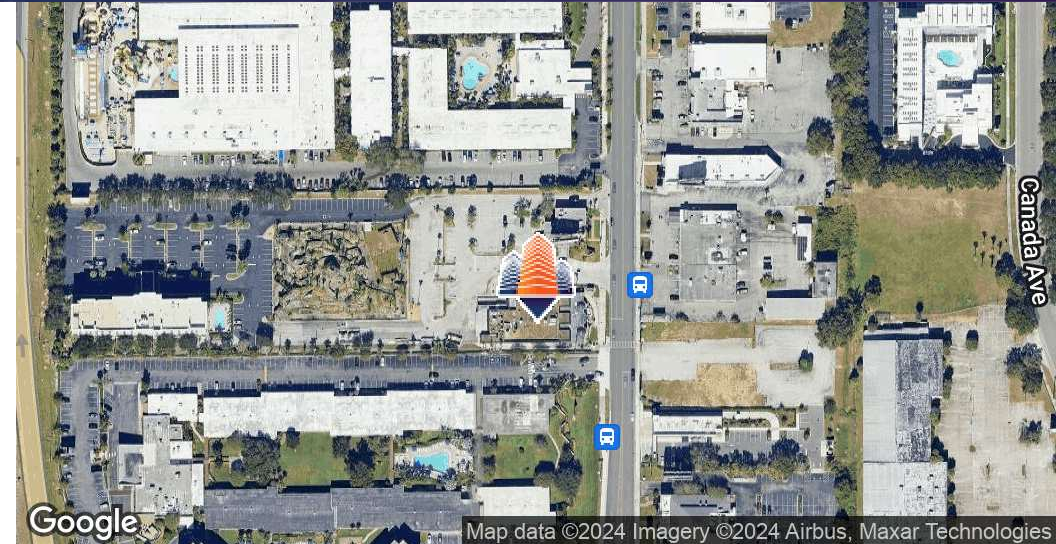
# Rare Second Gen. I-Drive Restaurant

7500 International Dr., Orlando, FL 32819



EQUITY  
INVESTMENT  
SERVICES

## PROPERTY SUMMARY



### PROPERTY HIGHLIGHTS

- 13,750 SF restaurant with 3,000 SF for outside seating.
- 3 high traffic signage opportunities included:
  - Digital Billboard sign with I-4 Visibility (204,400 AADT)
  - Digital Sign on International Drive (23,500 AADT)
  - Monument sign on International Drive (23,500 AADT)
- Minutes from the main attractions in the tourist corridor and the Orange County Convention Center, 2nd largest in the Nation.
- Surrounded by over 50,000 hotel rooms within the I-Drive corridor

### OFFERING SUMMARY

Lease Rate:	\$35.00 SF/yr (NNN)
Available SF:	13,750 SF
Lot Size:	3.26 Acres
Building Size:	13,750 SF

DEMOGRAPHICS	1 MILE	3 MILES	5 MILES
Total Households	2,316	25,705	77,112
Total Population	5,201	65,868	203,842
Average HH Income	\$149,207	\$115,703	\$98,109

Erik Vasquez  
407.415.7825  
evasquez@eisre.com

Juan Jimenez, MSRE, CCIM  
407.844.5238  
jjimenez@eisre.com



7575 Dr. Phillips Blvd, Ste 390  
Orlando, FL 32819  
www.eisre.com



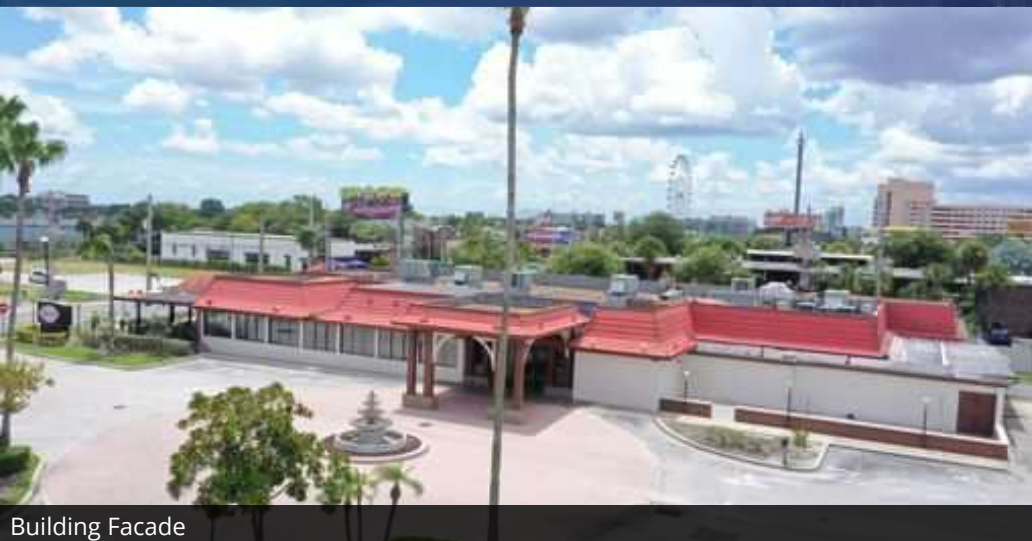
# Rare Second Gen. I-Drive Restaurant

7500 International Dr., Orlando, FL 32819



EQUITY  
INVESTMENT  
SERVICES

## PROPERTY PHOTOS



Building Facade



Digital Billboard (I-Drive Sign)



Digital Billboard (I-4 Sign)



Monument Signage (I-Drive)

Erik Vasquez  
407.415.7825  
evasquez@eisre.com

Juan Jimenez, MSRE, CCIM  
407.844.5238  
jjimenez@eisre.com



7575 Dr. Phillips Blvd, Ste 390  
Orlando, FL 32819  
www.eisre.com



# Rare Second Gen. I-Drive Restaurant

7500 International Dr., Orlando, FL 32819



EQUITY  
INVESTMENT  
SERVICES

AERIAL



Erik Vasquez  
407.415.7825  
evasquez@eisre.com

Juan Jimenez, MSRE, CCIM  
407.844.5238  
jjimenez@eisre.com



7575 Dr. Phillips Blvd, Ste 390  
Orlando, FL 32819  
www.eisre.com



# Rare Second Gen. I-Drive Restaurant

7500 International Dr., Orlando, FL 32819



EQUITY  
INVESTMENT  
SERVICES

## ATTRACTIONS & ENTERTAINMENT MAP



Map data ©2021 Imagery ©2021, CNES / Airbus, Lake County, Landsat / Copernicus, Maxar Technologies, U.S. Geological Survey

Erik Vasquez  
407.415.7825  
evasquez@eisre.com

Juan Jimenez, MSRE, CCIM  
407.844.5238  
jjimenez@eisre.com



7575 Dr. Phillips Blvd, Ste 390  
Orlando, FL 32819  
www.eisre.com



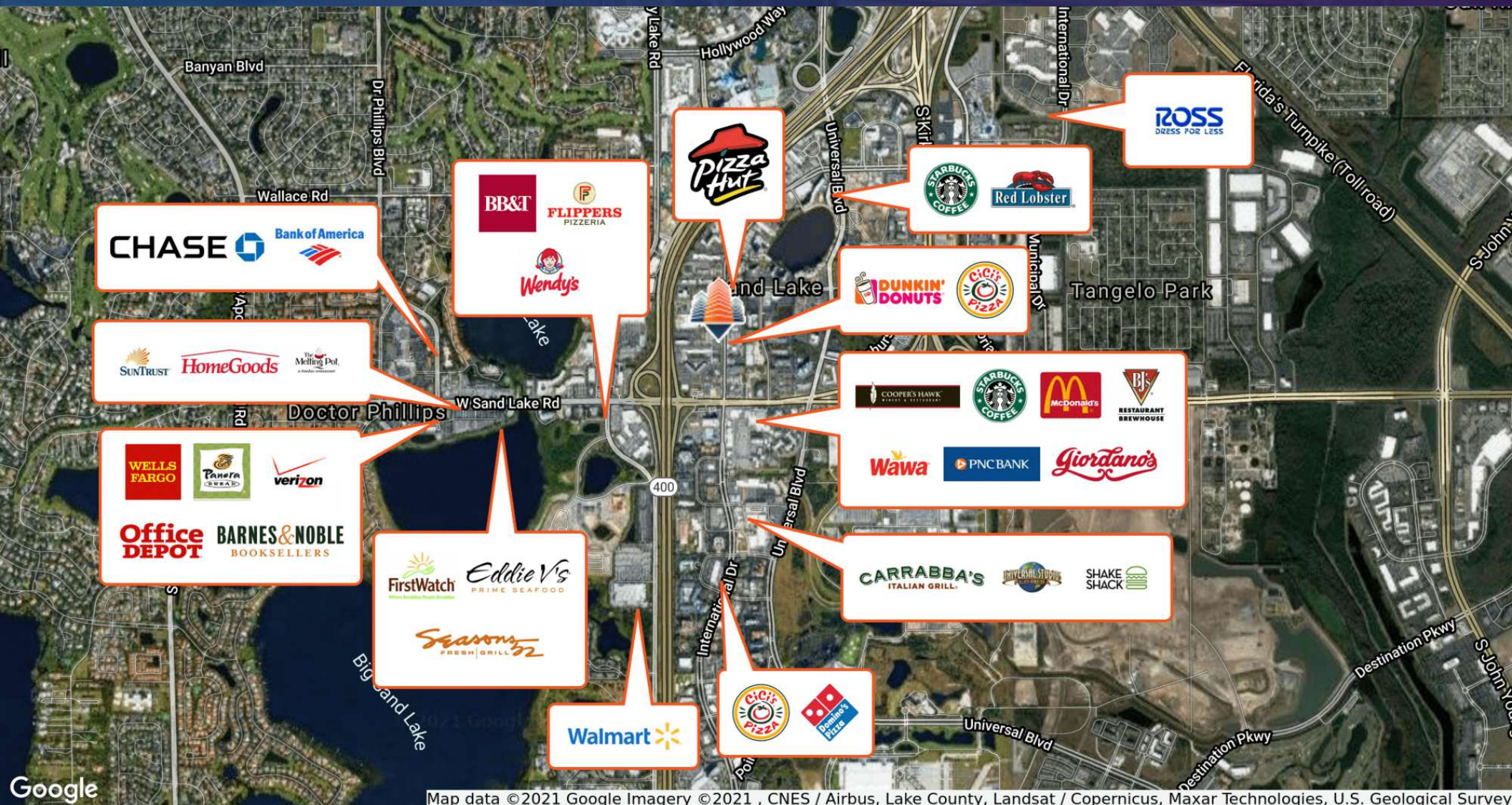
# Rare Second Gen. I-Drive Restaurant

7500 International Dr., Orlando, FL 32819



EQUITY  
INVESTMENT  
SERVICES

## RETAILER MAP



Map data ©2021 Google Imagery ©2021, CNES / Airbus, Lake County, Landsat / Copernicus, Maxar Technologies, U.S. Geological Survey

Erik Vasquez  
407.415.7825  
evasquez@eisre.com

Juan Jimenez, MSRE, CCIM  
407.844.5238  
jjimenez@eisre.com



7575 Dr. Phillips Blvd, Ste 390  
Orlando, FL 32819  
www.eisre.com



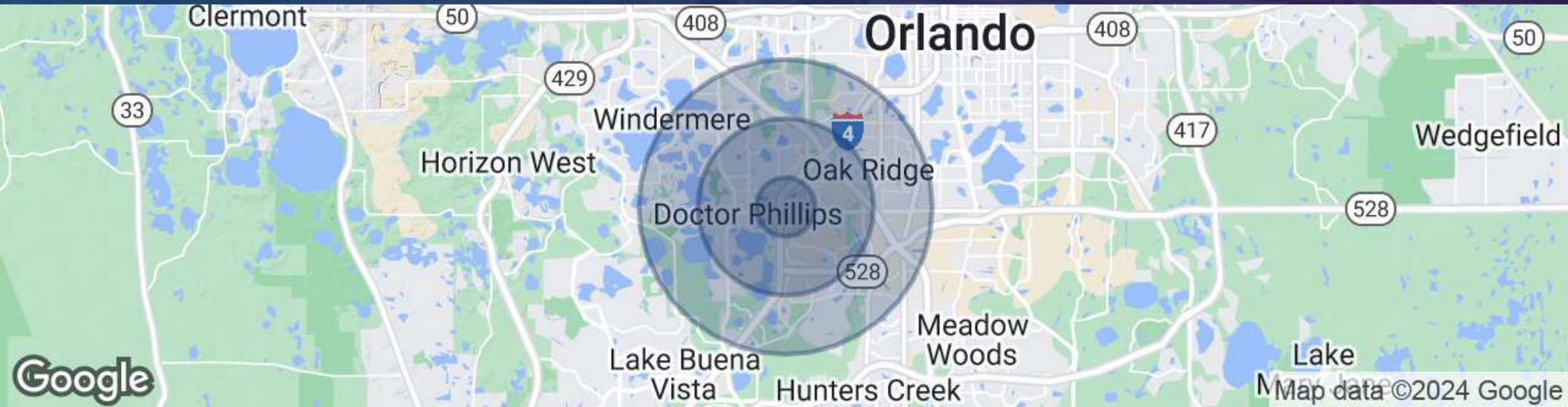
# Rare Second Gen. I-Drive Restaurant

7500 International Dr., Orlando, FL 32819



EQUITY  
INVESTMENT  
SERVICES

## DEMOGRAPHICS MAP & REPORT



POPULATION	1 MILE	3 MILES	5 MILES
Total Population	5,201	65,868	203,842
Average Age	38.3	34.2	34.0
Average Age (Male)	37.2	33.8	33.1
Average Age (Female)	40.5	34.8	35.0
HOUSEHOLDS & INCOME	1 MILE	3 MILES	5 MILES
Total Households	2,316	25,705	77,112
# of Persons per HH	2.19	2.54	2.60
Average HH Income	\$149,207	\$115,703	\$98,109
Average House Value	\$561,500	\$505,840	\$471,945

Erik Vasquez

407.415.7825

evasquez@eisre.com

Juan Jimenez, MSRE, CCIM

407.844.5238

jjimenez@eisre.com



7575 Dr. Phillips Blvd, Ste 390

Orlando, FL 32819

www.eisre.com