

FOR LEASE

1207 DANIELS ROAD

WINTER GARDEN, FL 34787



**CLASS "A" MEDICAL OFFICE BUILDINGS
WINTER GARDEN
FROM 2,425 - 10,000 ± RSF SPACE AVAILABLE**

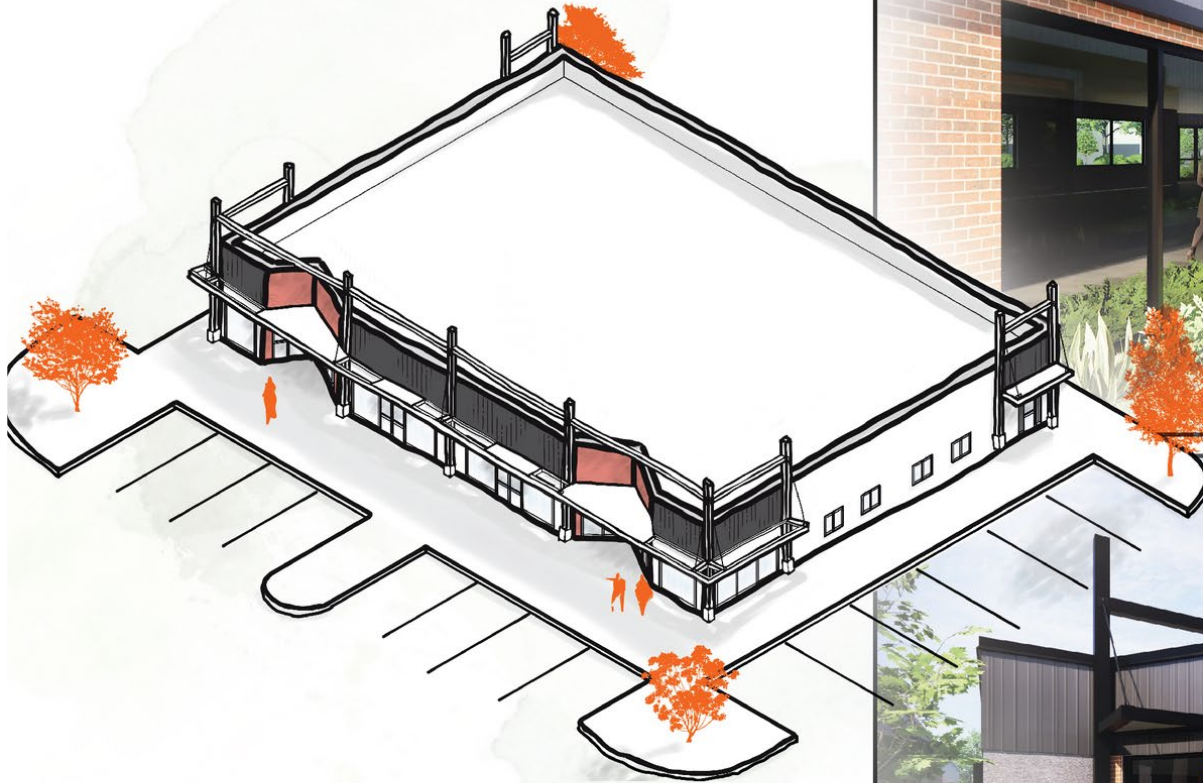
Matt Weinberger
Vice President

Healthcare Real Estate Advisor

D 321.281.8510

M 239.246.1030

E mweinberger@lee-associates.com



- From 2,425- 10,000 RSF Available
- Four (4) Standalone Buildings with Frontage on Daniels Road
- Located just North of AdventHealth Winter Garden, Nemours Children's Hospital and Winter Garden Village
- 5/1,000 SF Parking Ratio
- Zoning: C-2 (Winter Garden)



1.5 MILES FROM FLORIDAS TURNPIKE



2.6 MILES FROM FL-429



14 MILES FROM I-4



4.8 MILES FROM FL-408



Population

1 Mile: 10,996
 3 Mile: 57,935
 5 Mile: 123,603



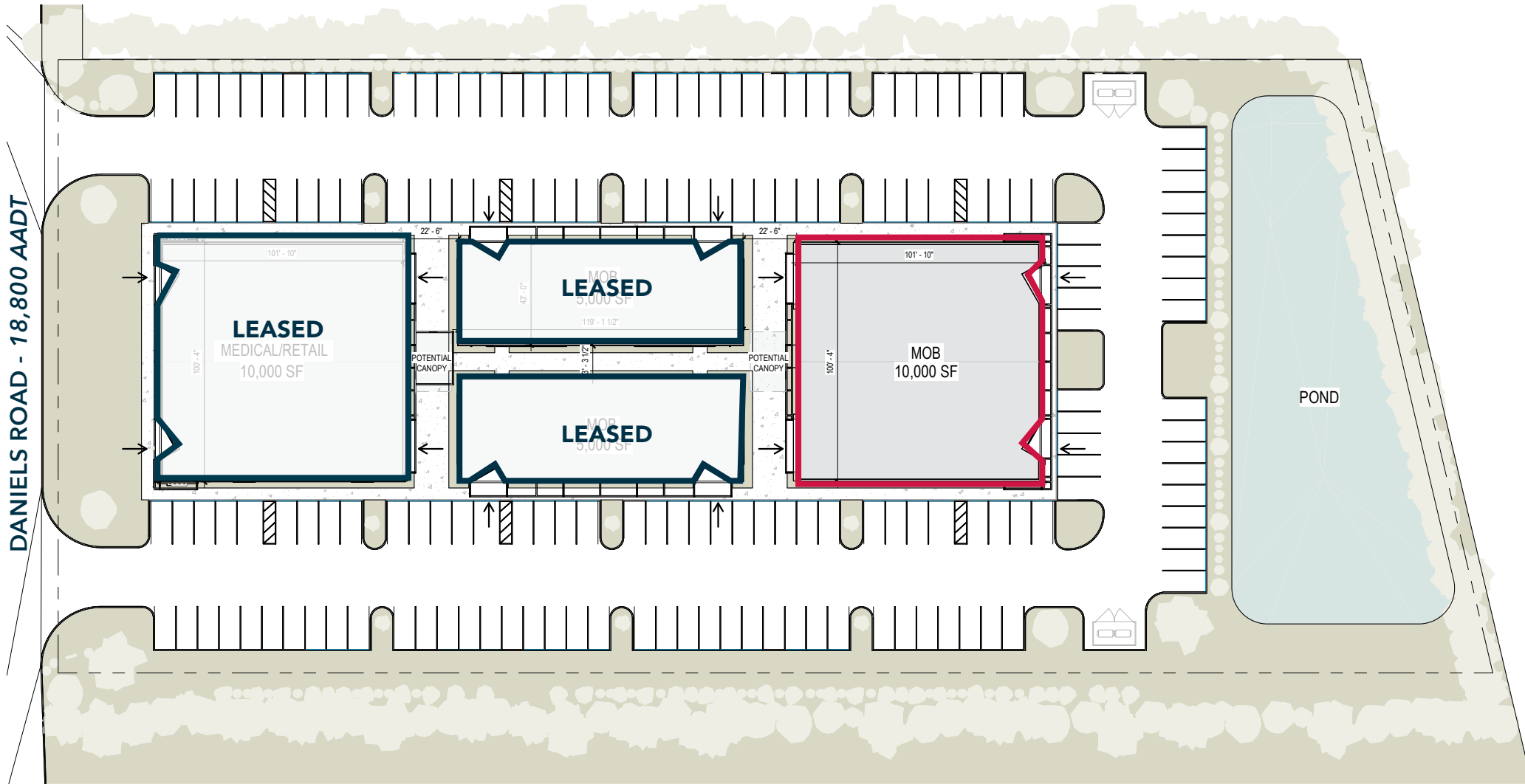
Households

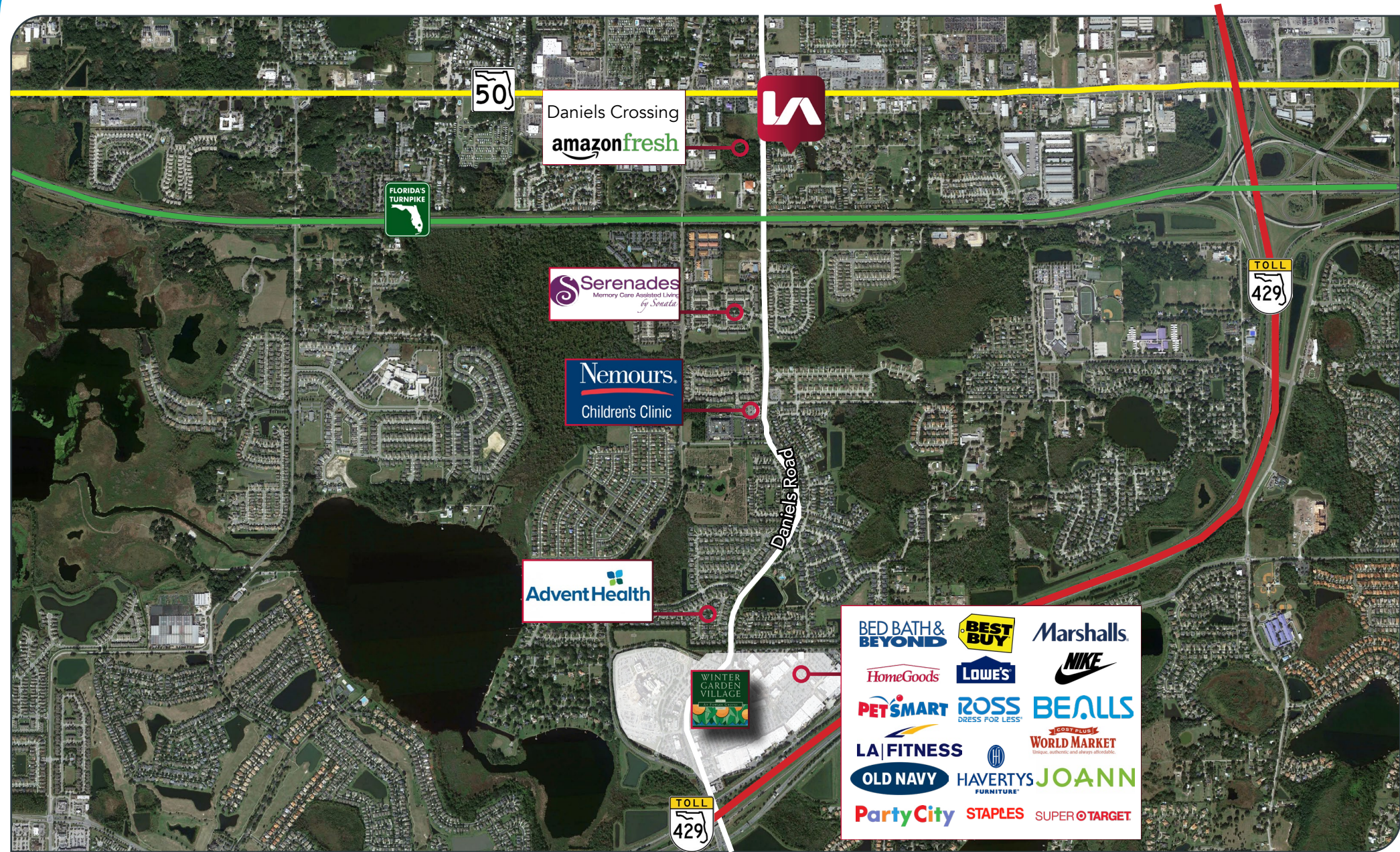
1 Mile: 3,767
 3 Mile: 19,871
 5 Mile: 42,202



Avg Household Income

1 Mile: \$86,368
 3 Mile: \$115,683
 5 Mile: \$112,123





For more information, please contact one of the following individuals:

CONTACT

Matt Weinberger
Vice President

Healthcare Real Estate Advisor

D 321.281.8510

M 239.246.1030

E mweinberger@lee-associates.com