

FOR LEASE



WAREHOUSE WITH OFFICE SPACE

980 Sunshine Lane, Altamonte Springs, FL 32714

3,200 SF AVAILABLE

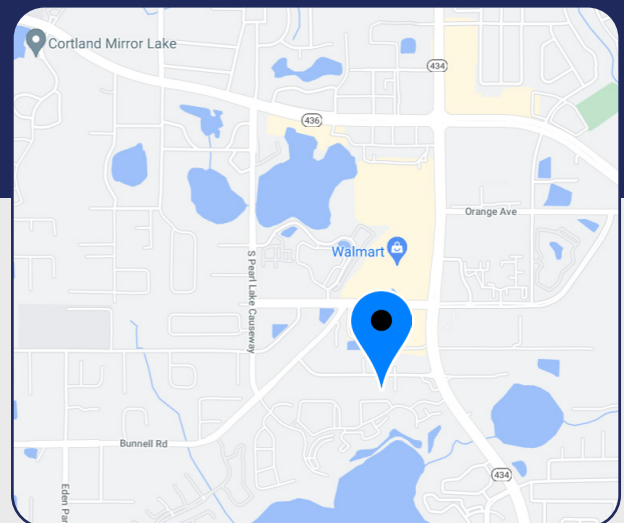
Units R and S - 3,200 SF

- 3,200 SF flex space (80' x 40' total)
- Half office, half open office or warehouse
- Two restrooms
- One 10' x 10' grade level door

Units T and U - 3,200 SF

- 3,200 SF flex space (80' x 40' total)
- Fully air-conditioned with ceiling (10'± height)
- Half office, half open office or warehouse
- Two restrooms
- Two 10' x 12' roll-up doors (one currently drywalled over)

- > Ample parking
- > Immediate occupancy
- > Nice boutique flex complex, low intensity tenants
- > **\$4,500.00/month, Modified Gross**



Bill Bywater, CCIM

D 407.206.5736

O 407.206.7300

bill@bywater.com



1209 Edgewater Drive

Suite 100

Orlando, FL 32804

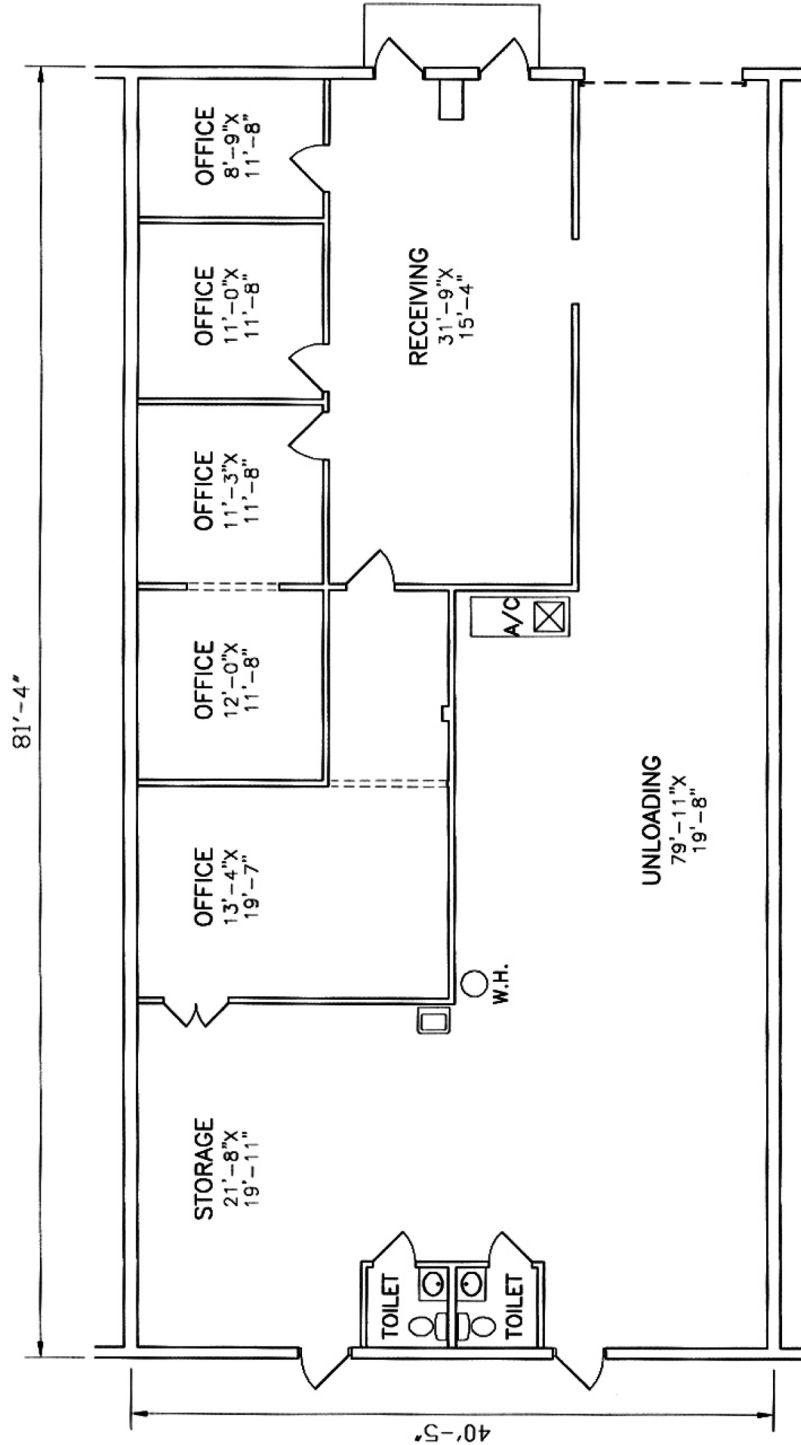
407.206.7300 Main

www.bywater.com

WAREHOUSE WITH OFFICE SPACE

980 Sunshine Lane, Altamonte Springs, FL 32714

FLOORPLAN - UNITS R & S



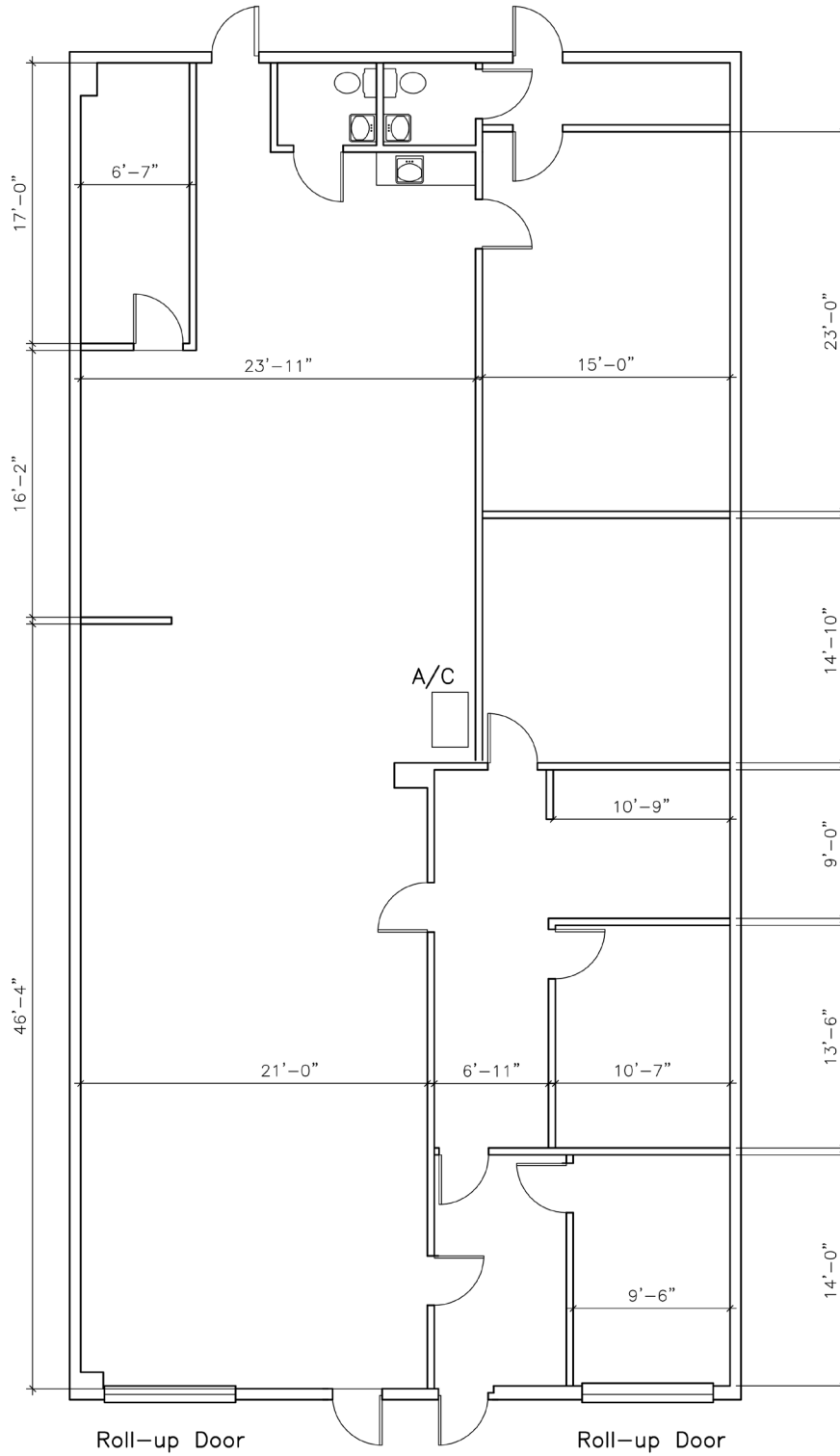
1209 Edgewater Drive, Suite 100 | Orlando, FL 32804 | 407.206.7300 | www.bywater.com

The information contained herein was obtained from sources deemed reliable and is assumed to be correct. It is not guaranteed by The Bywater Company.

WAREHOUSE WITH OFFICE SPACE

980 Sunshine Lane, Altamonte Springs, FL 32714

FLOORPLAN - UNITS T & U



1209 Edgewater Drive, Suite 100 | Orlando, FL 32804 | 407.206.7300 | www.bywater.com

The information contained herein was obtained from sources deemed reliable and is assumed to be correct. It is not guaranteed by The Bywater Company.