

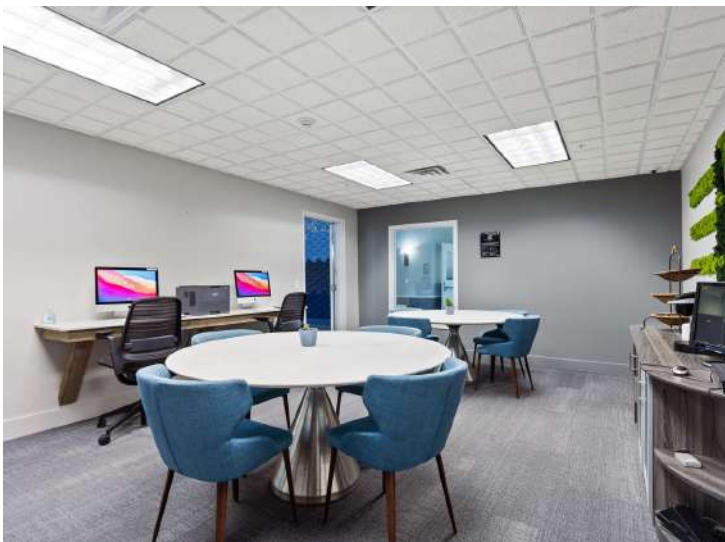


7201 Walker Street | St. Louis Park, MN 55426

Move-In Ready Office Space For Lease for \$12 PSF Gross!

Space Available:

- Suite 20: 3,400 sf
- Lease Rate: \$12.00 psf Gross



Highlights and Features:

- Central St. Louis Park location
- Easy access from Highway 7
- Close to many area shops and restaurants
- 8 offices
- Reception area
- Large conference room
- Kitchenette
- 24-hour state of the art gym access
- Cycle Studio
- Event space available for use at no charge
- Free parking

Demographics and Traffic Counts:

- Average Household Population: 1 mile - 7,598, 3 miles - 64,284 and 5 miles - 145,439
- Average Household Income: 1 mile - \$65,637, 3 miles - \$85,289 and 5 miles - \$95,053
- Highway 7 - 36,000 vpd, Walker St - 3,700 vpd, Frontage Road - 3,103 vpd



Christianson & Company
COMMERCIAL REAL ESTATE SERVICES
www.SpaceAvailableMN.com

CORFAC
INTERNATIONAL

EMILY MASSIE

612.750.6480

emily@christiansonandco.com

LISA CHRISTIANSON

952.393.1212

lisa@christiansonandco.com

This information is accurate as of the date of printing and is subject to change without notice. All information is deemed accurate, but cannot be guaranteed.

www.SpaceAvailableMN.com
info@SpaceAvailableMN.com | 952.921.5844

Amenity Photos



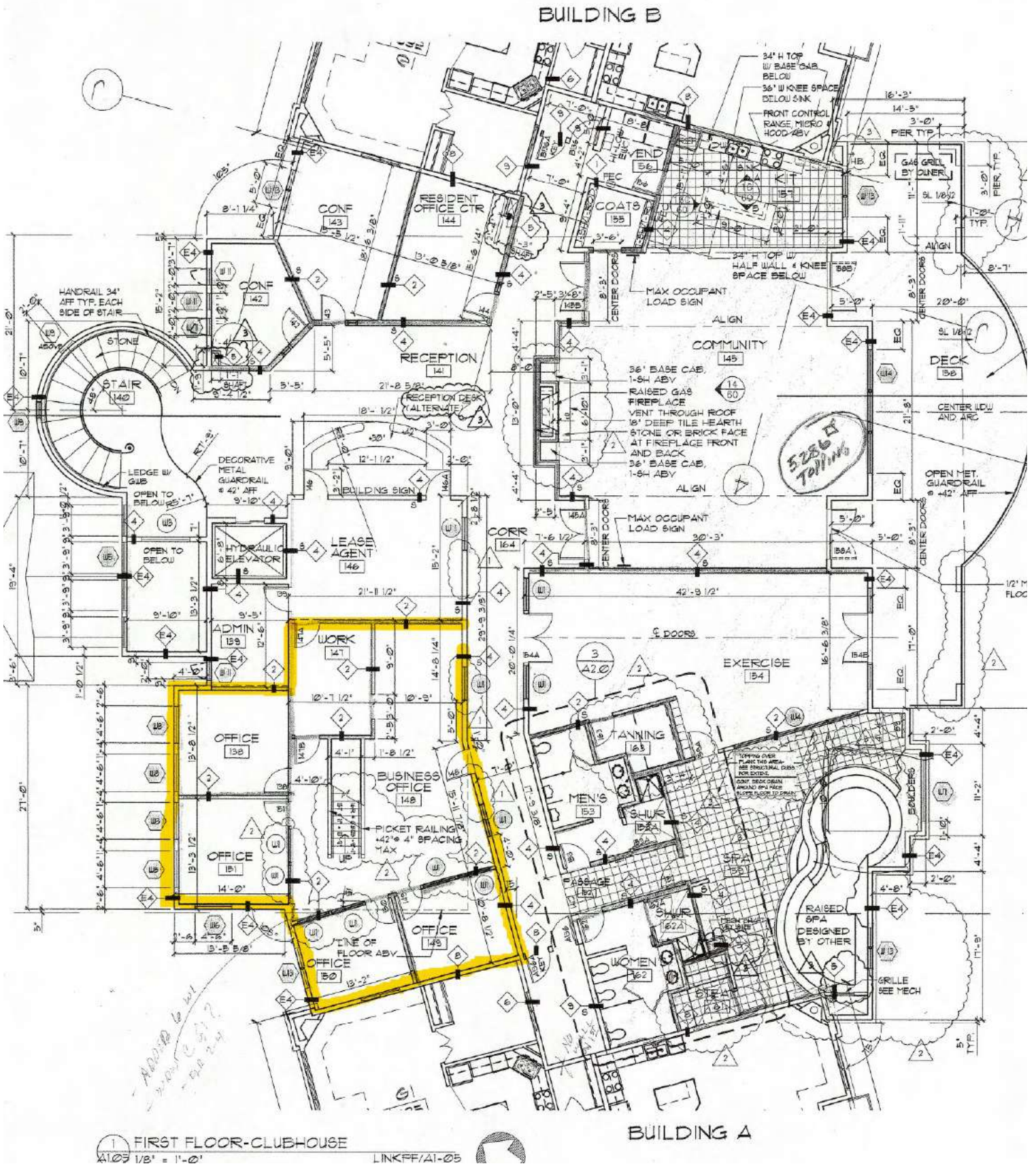
This information is accurate as of the date of printing and is subject to change without notice. All information is deemed accurate, but cannot be guaranteed.

Interior Photos



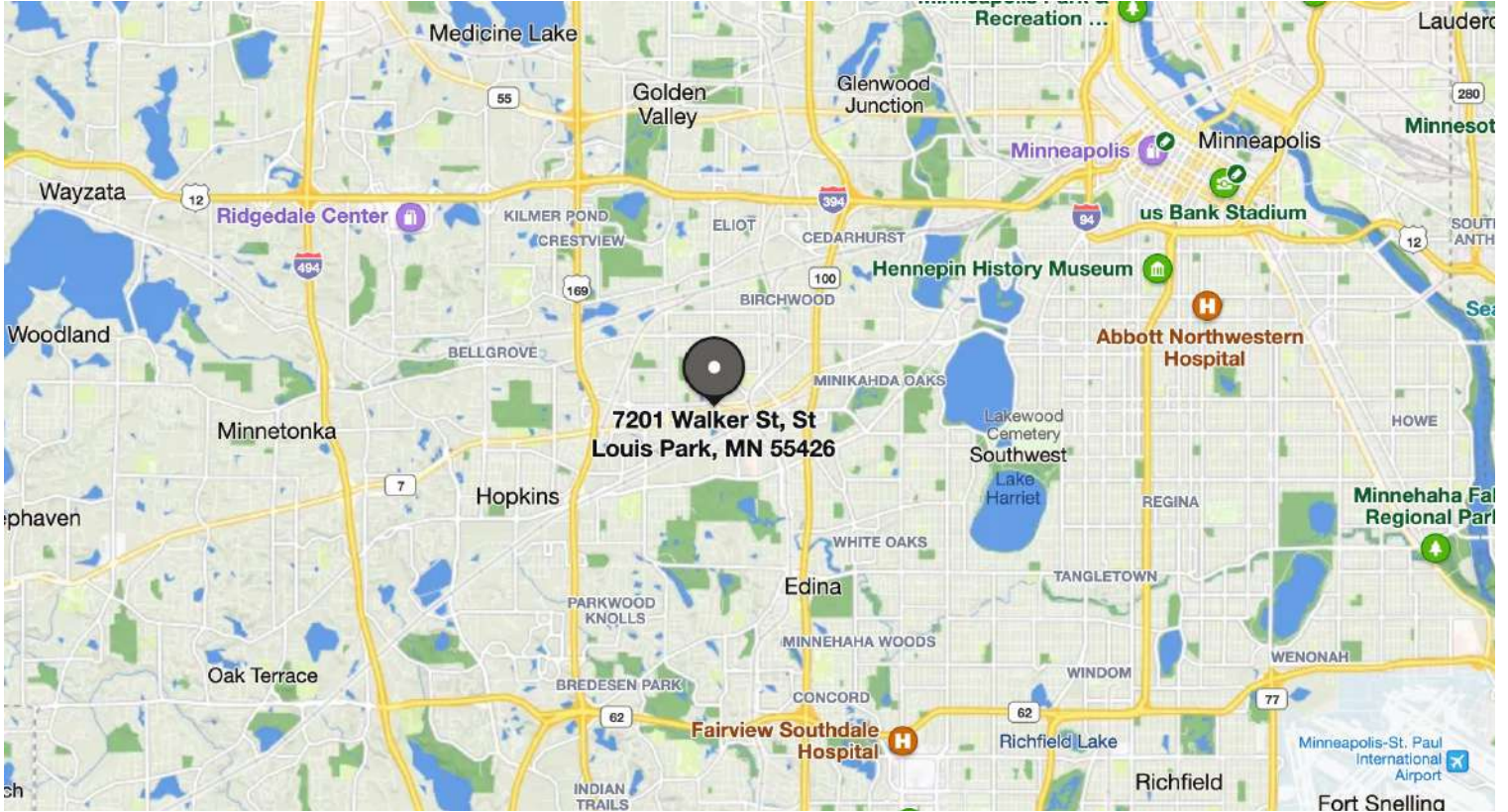
This information is accurate as of the date of printing and is subject to change without notice. All information is deemed accurate, but cannot be guaranteed.

Space Plan

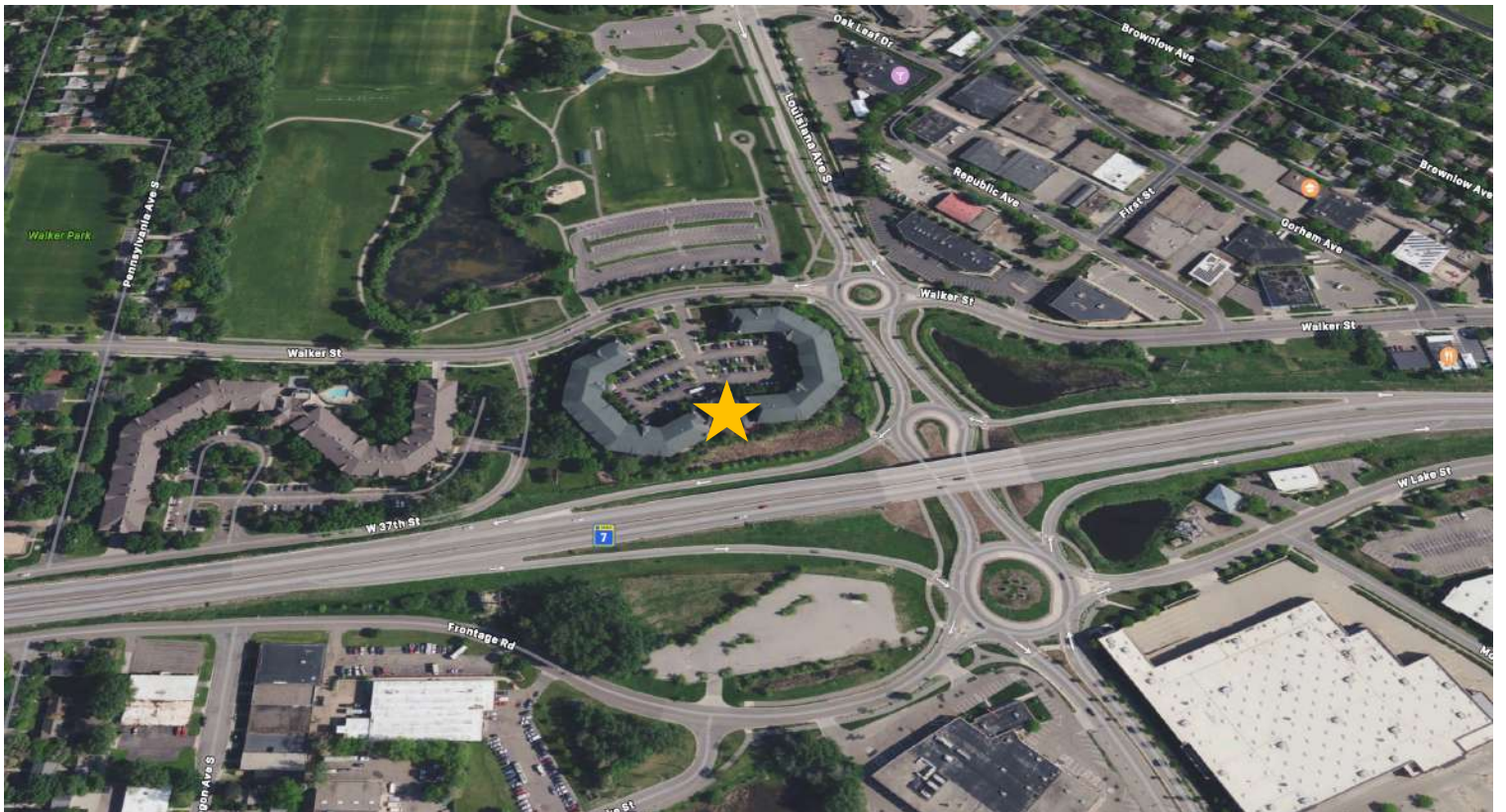


This information is accurate as of the date of printing and is subject to change without notice. All information is deemed accurate, but cannot be guaranteed.

Map



Aerial



This information is accurate as of the date of printing and is subject to change without notice. All information is deemed accurate, but cannot be guaranteed.