



Property Information

Address	405 Garden Street Titusville, FL 32796
Folio number	22-35-03-03-L-1
Land	±0.54 ac
Zoning	Commercial

Property Overview

This offering includes a 0.54± acre cleared site located on the main road to Canaveral National Seashore/Playalinda Beach. Located in Historic Downtown Titusville, the property is easily accessible with close proximity to major thoroughfares such as Interstate-95 and US-1. Minutes away from the Kennedy Space Center and Playalinda beach.

Property Highlights



Direct frontage on Garden Street (SR 406)



Minutes from the Kennedy Space Center and Playalinda beach



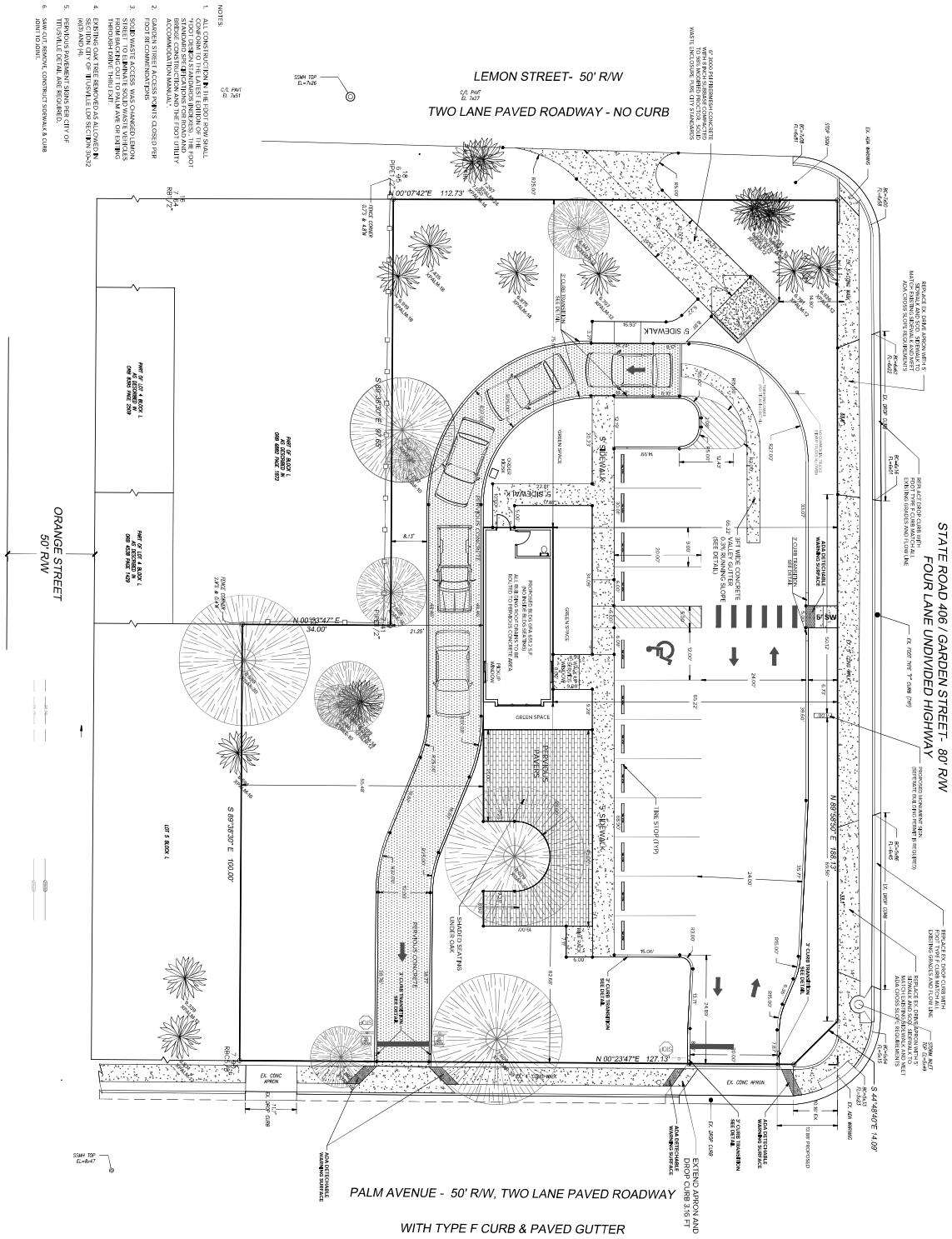
Near an abundance of retail and restaurants

Asking Price: \$599,000

For further information

Nathan Eissler, CCIM, SIOR
Principal
+1 407 440 6658
nathan.eissler@avisonyoung.com

Proposed Site Plan

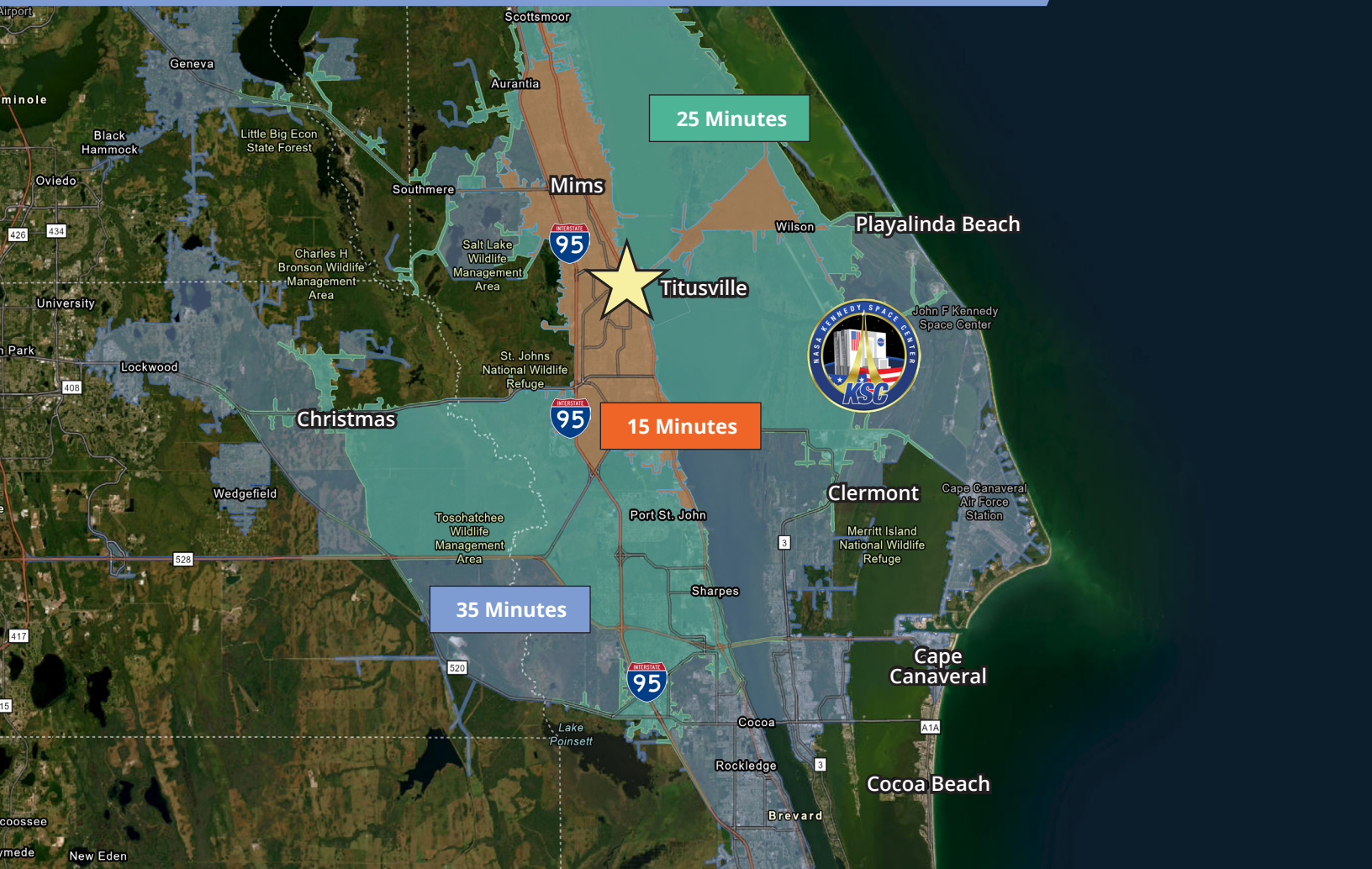


For further information

Nathan Eissler, CCIM, SIOR
Principal
+1 407 440 6658
nathan.eissler@avisonyoung.com



15-25-35 Minute Drive-Time Map




Drive Time Demographics (25 Minutes)


121,037
Population


50,556
Households


\$99,132
Average HH income


2.89
Average HH size


45,216
Employees

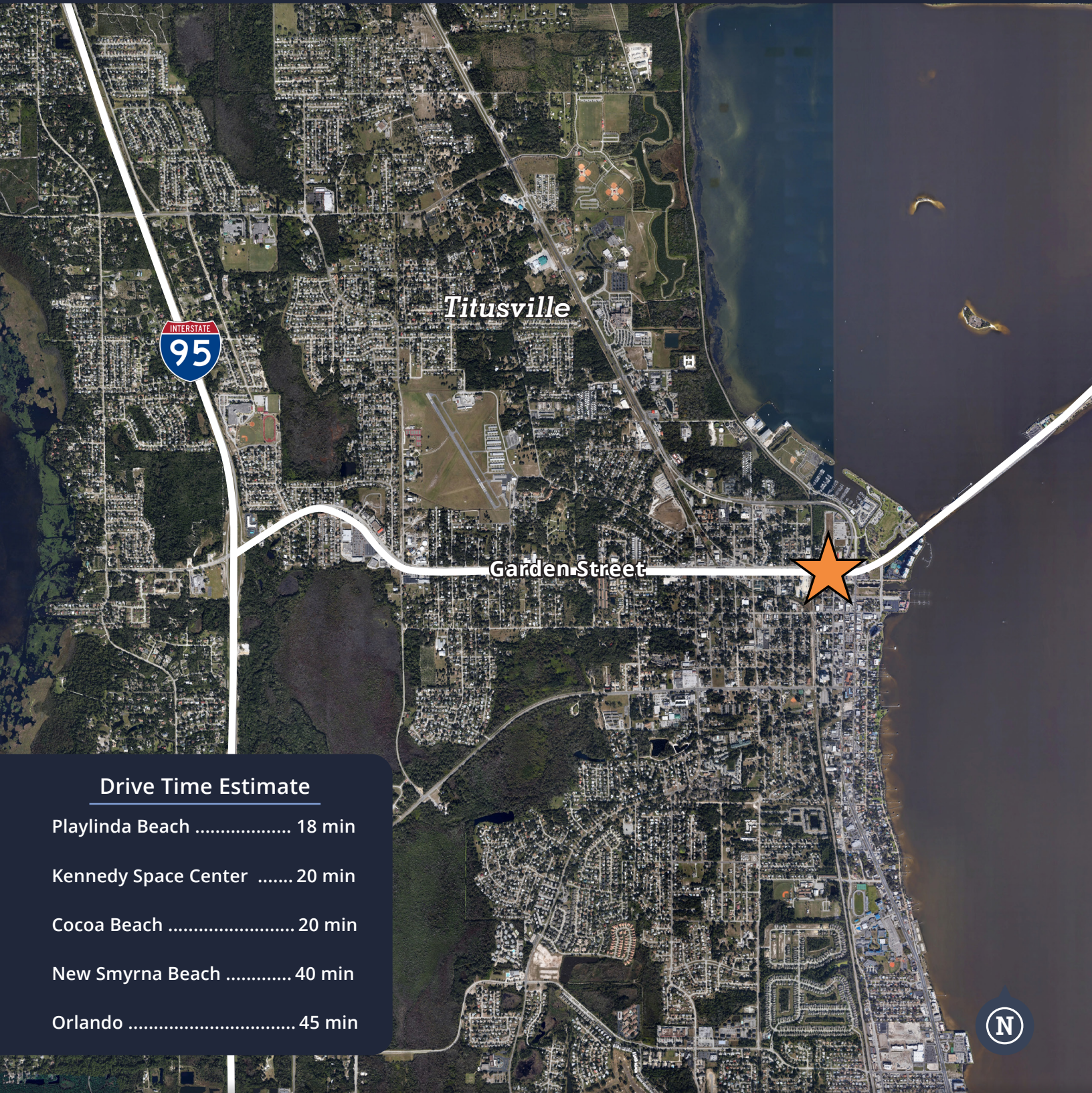
For further
information

Nathan Eissler, CCIM, SIOR
Principal
+1 407 440 6658
nathan.eissler@avisonyoung.com



For Sale | Retail Land

**405 Garden Street
Titusville, FL 32796**



Drive Time Estimate

- Playlinda Beach 18 min
- Kennedy Space Center 20 min
- Cocoa Beach 20 min
- New Smyrna Beach 40 min
- Orlando 45 min

**For further
information**

Nathan Eissler, CCIM, SIOR
Principal
+1 407 440 6658
nathan.eissler@avisonyoung.com

