

# SWC Ruth Road & Main Street

Huntley, IL 60142

# For Sale

MLS #07439226

LAND



LAND

10 ACRES

PRICE REDUCED \$1,990,000 (\$4.57 PSF)

### 10 Acres in Downtown Huntley

Property located in the heart of downtown Huntley with frontage on all four sides. Utilities accessible to site.

The Village of Huntley would like this property to be a commercial site.

I-90 interchange at Route 47 and Northwestern Medicine Huntley Hospital, very close to this site, have sparked much interest in this growing community. This prime property lends itself to many business opportunities.

Demographics	1 Mile	3 Miles	5 Miles
Total Population	8,674	46,926	97,485
Average HH Income	\$153,620	\$152,884	\$149,154

### Specifications

Description:	Proposed Commercial Development
Land Size:	10 Acres (435,600 SF)
Topography:	Level
Environmental Status:	To Be Assessed
Utilities:	Electric / Gas Nearby
Sewer/Water:	City
Frontage Dimensions:	2,800'+/-
Zoning:	AG/Planned Mixed Commercial
Taxes:	\$406.40 (2023)
PIN #:	18-33-226-007

[CLICK HERE TO VIEW OUR WEBSITE](#)

No warranty or representation is made as to the accuracy of the foregoing information. Terms of sale or lease and availability are subject to change or withdrawal without notice. This document is for information purposes only. No offer of sub-agency is being made.



www.PremierCommercialRealty.com | 847.854.2300 | 9225 S. Route 31, Lake in the Hills, IL 60156

VP / Designated Managing Broker  
**Heather Schweitzer**  
 HeatherS@PremierCommercialRealty.com  
 O: 847.854.2300 x15 C: 815.236.9816

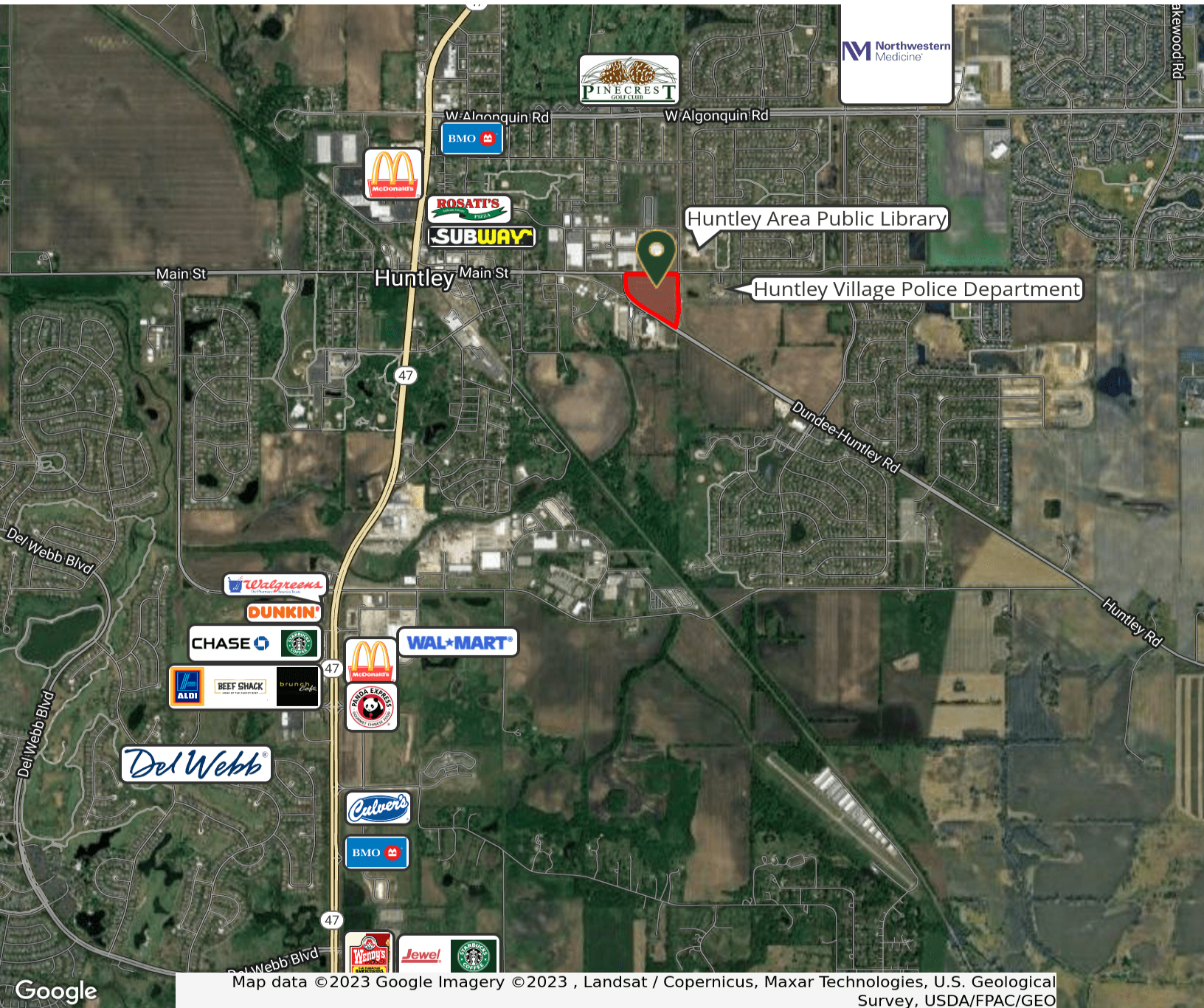


# SWC Ruth Road & Main Street

Huntley, IL 60142

# For Sale

LAND



[CLICK HERE TO VIEW OUR WEBSITE](#)

*No warranty or representation is made as to the accuracy of the foregoing information. Terms of sale or lease and availability are subject to change or withdrawal without notice. This document is for information purposes only. No offer of sub-agency is being made.*



www.PremierCommercialRealty.com | 847.854.2300 | 9225 S. Route 31, Lake in the Hills, IL 60156

VP / Designated Managing Broker  
**Heather Schweitzer**  
HeatherS@PremierCommercialRealty.com  
O: 847.854.2300 x15 C: 815.236.9816