

For Sale

# Summit Place Mixed Use Parcel

6.36 Acres | \$290,881 / Acre

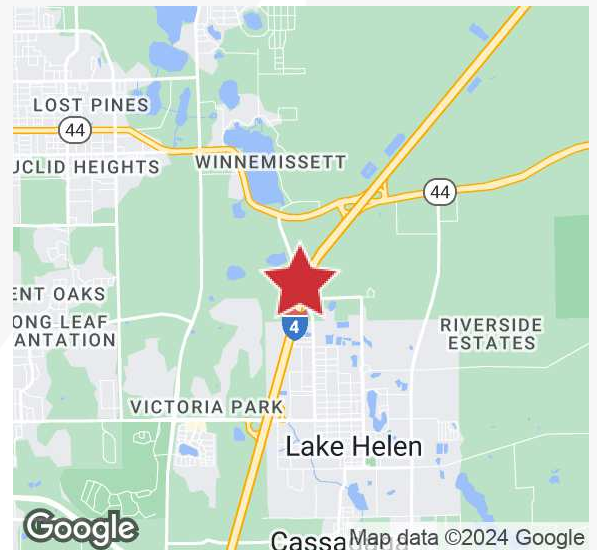


## Summit Place

DeLand, Florida 32724

### Property Highlights

- Permitted uses include office, ALF, research and development
- 1/4 mile of frontage on I-4 with daily traffic counts of 74,500
- C-2 zoning - most uses permitted
- Research & Development Facilities and Corporate Headquarters also permitted
- 1.1 miles from I-4 interchange at SR 44



**Sale Price: \$1,850,000**

### Demographics

	3 Miles	5 Miles	10 Miles
Total Households	6,928	26,375	81,987
Total Population	16,459	65,017	205,892
Average HH Income	\$73,967	\$64,695	\$63,853

For more information

**Steve Costa**

O: 386 238 3600  
scosta@realvest.com



07.05.24

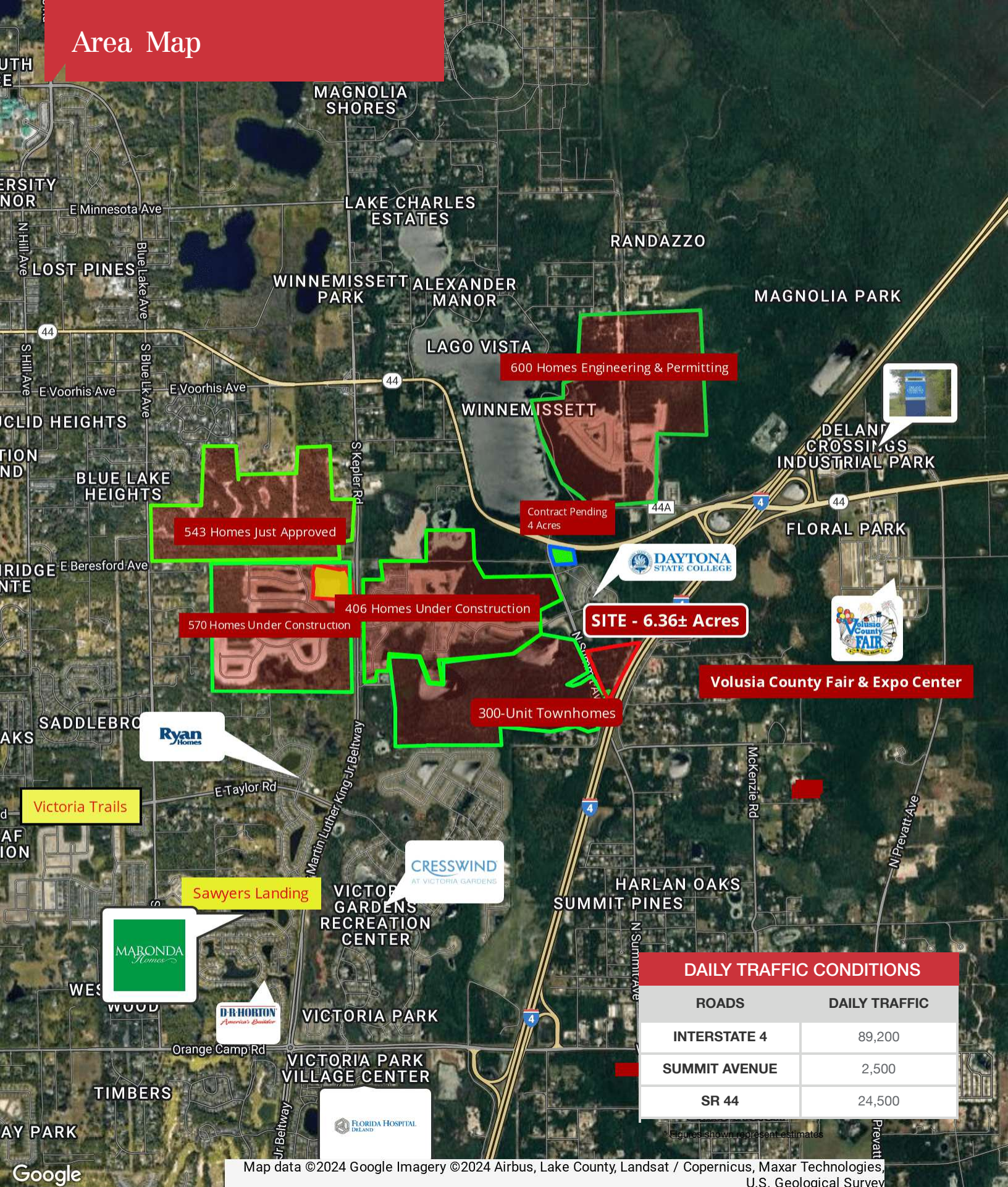
The information contained herein has been given to us by the owner of the property or other sources we deem reliable. We have no reason to doubt its accuracy, but we do not guarantee it. All information should be verified prior to purchase or lease. Unless otherwise noted, the property is being offered as-is, where is, with all faults.

444 Seabreeze Blvd, Suite 1000  
Daytona Beach, FL 32118

386 238 3600 tel

[nairealvest.com](http://nairealvest.com)

# Area Map



DAILY TRAFFIC CONDITIONS	
ROADS	DAILY TRAFFIC
INTERSTATE 4	89,200
SUMMIT AVENUE	2,500
SR 44	24,500

Figures shown represent estimates

Map data ©2024 Google Imagery ©2024 Airbus, Lake County, Landsat / Copernicus, Maxar Technologies, U.S. Geological Survey