

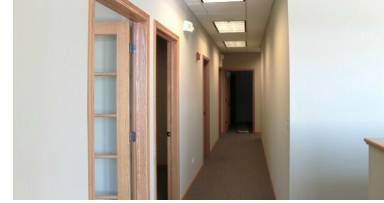
380 Terra Cotta Rd. Suite D

Crystal Lake, IL 60012

For Lease

MLS #1209222

OFFICE CONDO



OFFICE CONDO 2,300 SF

\$3,370/MO. (GROSS) \$17.58 PSF

PROFESSIONAL OFFICE SUITE 2,300 SF

Located in this 18,000 SF multi-tenant professional office complex. Just off Route 31 and Route 176 (E Terra Cotta Ave).

Suite D: 2,300 SF office suite with 5 private offices, 2 ADA baths, 2 conference rooms, kitchenette and open clerical/reception.

High quality build out with solid wood doors and trim. \$3,370/mo. Gross (CAM and taxes included).

Ideal for professional services, accountant, attorney, insurance, etc. Monument signage available.

Specifications

Building Size:	18,000 SF
Year Built:	2007
HVAC System:	GFA/ Central Air
Electrical:	100 amp
Washrooms:	2 ADA
Ceiling Height:	9'
Parking:	Common
Sewer/Water:	City
Zoning:	M
Utilities:	Tenant Responsible
CAM & Taxes:	Included
PIN #:	14-33-283-011

[CLICK HERE TO VIEW OUR WEBSITE](#)

No warranty or representation is made as to the accuracy of the foregoing information. Terms of sale or lease and availability are subject to change or withdrawal without notice. This document is for information purposes only. No offer of sub-agency is being made.



www.PremierCommercialRealty.com | 847.854.2300 | 9225 S. Route 31, Lake in the Hills, IL 60156

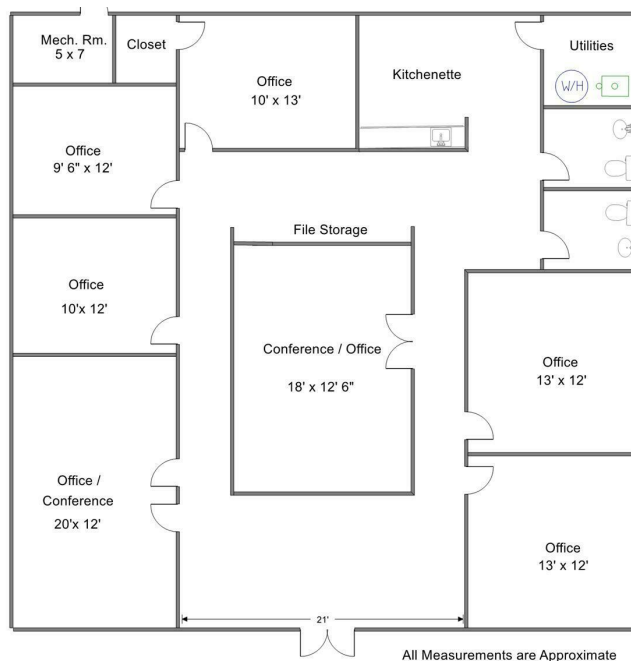
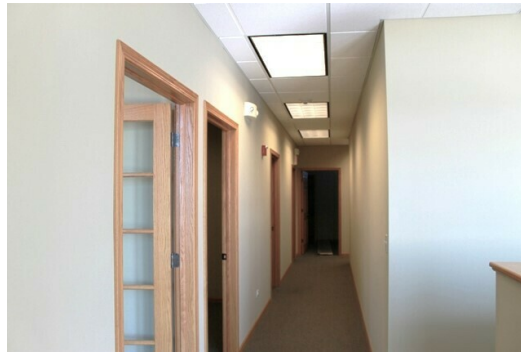
VP / Designated Managing Broker
Heather Schweitzer

HeatherS@PremierCommercialRealty.com
O: 847.854.2300 x15 C: 815.236.9816

380 Terra Cotta Rd. Suite D
Crystal Lake, IL 60012

For Lease

OFFICE CONDO



[CLICK HERE TO VIEW OUR WEBSITE](#)

No warranty or representation is made as to the accuracy of the foregoing information. Terms of sale or lease and availability are subject to change or withdrawal without notice. This document is for information purposes only. No offer of sub-agency is being made.



www.PremierCommercialRealty.com | 847.854.2300 | 9225 S. Route 31, Lake in the Hills, IL 60156

VP / Designated Managing Broker
Heather Schweitzer
HeatherS@PremierCommercialRealty.com
O: 847.854.2300 x15 C: 815.236.9816