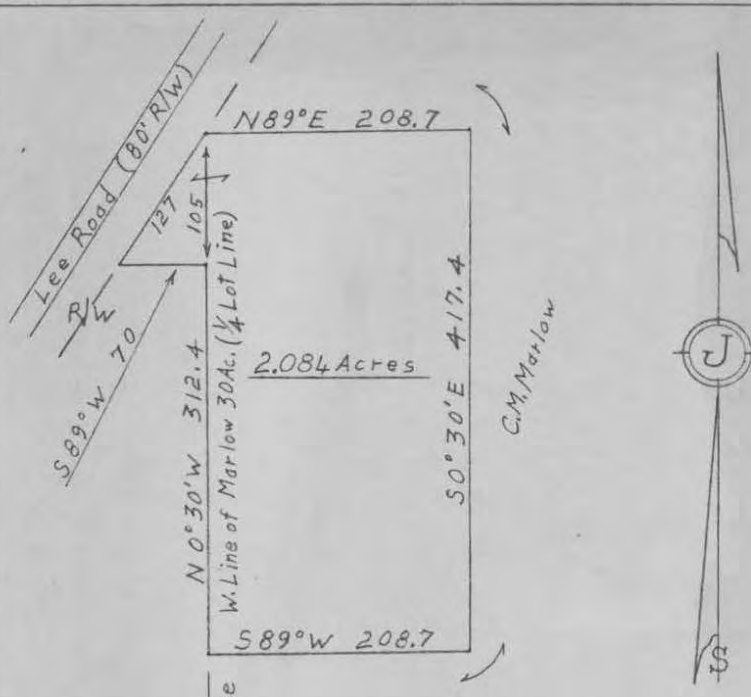


***Industrial Building/Flex Space for Sale
8290 Lee Road
Lithia Springs, GA.***



- **7,000 sf flex building office and warehouse on 2+ acres**
- **Zoned light industrial**
- **1.1 miles south of Interstate 20, Lee Rd widened to 4 lane**
- **Currently on septic, sewer available at some expense. Public water.**
- **20' clear height in warehouse**
- **1,000 sf of mezzanine storage**
- **Heavy power**
- **Oversize grade level door (14'X16')**
- **External dock high**
- **Substantial outside storage, some paved**
- **Asking \$750,000 for all**

***Offered for Sale Exclusively by
Commercial Realty Services of West Georgia
Mike Patterson, CCIM
770-301-1886 ebroker@msn.com***



Property To Be Purchased By
RICHARD J. SMITH
 In land lot 890, 18th Dist, 2nd Sec.
 Douglas County, Georgia

Oct. 6, 1961

W. P. Johnson, Surveyor

Scale - 1" = 100'



GEORGIA, DEPT. OF LAND & SURVEY SUPERIOR COURT
 Filed 20 day of Nov 19 61
FM Wins, Clerk







