



BROKERAGE DONE DIFFERENTLY

**live  
work  
& play**

IN THE HEART OF TAMPA BAY!

**813.935.9600**

TINA MARIE ELOIAN, CCIM

TINA@FLORIDACOMMERCIALGROUP.COM

**FLORIDA COMMERCIAL GROUP**

401 EAST PALM AVENUE, TAMPA, FL 33602

FLORIDACOMMERCIALGROUP.COM

**3333 W. KENNEDY BLVD.  
TAMPA, FL 33609 | FOR SALE/ LEASE**

**PRIME COMMERCIAL OFFICE SPACE  
DIRECTLY ON W. KENNEDY BLVD.**

**• 1,260 SF & 1,284 SF •**

**OFFICE CONDO | SOLD TOGETHER OR SEPARATELY**



This information is from sources deemed to be reliable. We are not responsible for misstatements of facts, errors or omissions, prior sale, change of price and/or terms or withdrawal from the market without notice. Buyer shall verify all information with their own representatives as well as state and local agencies.

Here is Your Opportunity to Have a Great Office Location While Earning Rental Income at the Same Time!

**Zoning is CN.** Commercial Neighborhood. This district provides areas for limited retail and personal services in residential neighborhoods. This district shall be placed at appropriate locations to supply the daily service needs of such neighborhoods and shall not be used to promote strip commercial development

## INVESTMENT HIGHLIGHTS



**HIGHEST AND BEST USE: PROFESSIONAL OFFICE SPACE FOR OWNER/ USER OR TENANT OCCUPANCY**

### FLORIDA COMMERCIAL GROUP IS PLEASED TO PRESENT AN OPPORTUNITY TO ACQUIRE 2 OFFICE CONDOS ALONG THE BUZZING W. KENNEDY BLVD. CORRIDOR IN THRIVING SOUTH TAMPA

- Situated within the busy South Tampa market
- Located in the Kennedy Oaks Condominium Complex
- 153' frontage directly on W. Kennedy Blvd.
- Professional office suites for owner/ investment or tenant occupancy
- Suite 203 measures **1,260 SF** | Suite 204 measures **1,284 SF SOLD TOGETHER OR SEPARATELY!**
- Private front and rear entrances
- Both suites feature spacious layouts, executive offices, conference rooms, kitchens, private restrooms and 2nd and third floor office access
- Large built-in cabinets and tables in the workstations, conference rooms and receptionist's work areas
- Onsite covered and surface parking
- Tenant directory and monument signage
- Impeccably maintained interior and exterior
- Condo Association fees total **\$433.80 per unit/ month.** (includes water and sewer, all-inclusive weekly janitorial services and roof and structure maintenance)
- Within a 3-mile radius of this site, approximately 106,610 people with an average age of 39 and the HH income is over \$110,372
- Minutes from shopping, dining, banking, lodging and educational facilities
- Site offers a huge development/ growth opportunity for the W. Kennedy Blvd. corridor
- A great place to invest, relocate or expand your business

**BROKERAGE DONE DIFFERENTLY**

LISTING AGENT: TINA MARIE ELOIAN, CCIM | 813.935.9600 | TINA@FLORIDACOMMERCIALGROUP.COM



401 EAST PALM AVENUE, TAMPA, FL 33602 FLORIDACOMMERCIALGROUP.COM

# LISTING DETAILS

## FINANCIAL & TERMS

Status: Active  
 Offering Price: **\$779,000/ for both suites**  
**\$399,000 Suite 203 | \$420,000 Suite 204**  
 Purchase Options: Cash, Hard Money, SBA, Conventional  
 Lease Price per SF: **\$20.00/ +S.T.**  
 Suite 203 Lease Price: **\$2,100.00** (monthly base rent)  
 Suite 204 Lease Price: **\$2,140.00** (monthly base rent)  
 Condo Association fees: **\$433.80 per unit/ month.** (includes water and sewer, all-inclusive weekly janitorial services and roof and structure maintenance)

## LOCATION

Street Address: 3333 W. Kennedy Blvd.  
 City: Tampa  
 Zip Code: 33609  
 County: Hillsborough  
 Traffic Count/ Cross Streets: 27,500 VTD, W. Kennedy Blvd.  
 Market: Tampa-St. Petersburg-Clearwater  
 Sub-market: West Tampa/Tampa Heights Area

## THE PROPERTY

Folio Number: 117178-0520 & 117178-0522  
 Zoning: CN (Commercial Neighborhood)  
 Current Use: Office Condos  
 Site Improvements: 1,260 SF :: 1,284 SF  
 Lot Dimensions: (approx.) 153' x 320' (approx.)  
 Front Footage: (approx.) 153' / W. Kennedy Blvd.  
 Lot Size: 48,960 SF :: Total Acreage: 1.12 acres

## UTILITIES

Electricity: TECO  
 Water: The City of Tampa  
 Waste: The City of Tampa  
 Communications: Spectrum, Frontier and Verizon

## TAXES

Tax Year: 2023  
 0520: \$4,107.52 :: 0522: \$4,184.76

## LEGAL DESCRIPTION

KENNEDY OAKS CONDOMINIUM UNIT 203  
 KENNEDY OAKS CONDOMINIUM UNIT 204

## THE COMMUNITY

Community/ Subdivision Name: West Tampa/Tampa Heights Area  
 Flood Zone Area: X  
 Flood Zone Panel: 12057C0353J



**BROKERAGE DONE DIFFERENTLY**

LISTING AGENT: TINA MARIE ELOIAN, CCIM | 813.935.9600 | TINA@FLORIDACOMMERCIALGROUP.COM

401 EAST PALM AVENUE, TAMPA, FL 33602 FLORIDACOMMERCIALGROUP.COM





PROPERTY PHOTOS



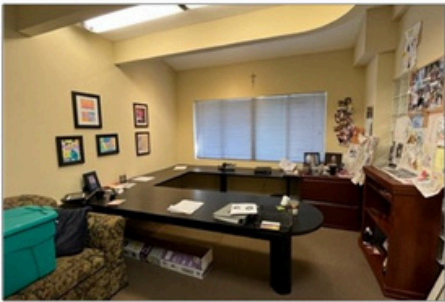
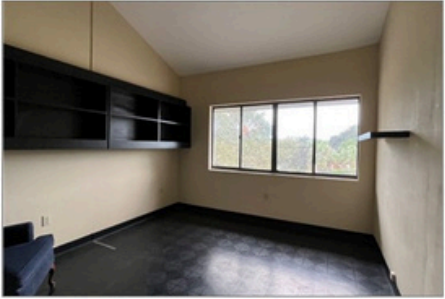
**BROKERAGE DONE DIFFERENTLY**

LISTING AGENT: TINA MARIE ELOIAN, CCIM | 813.935.9600 | TINA@FLORIDACOMMERCIALGROUP.COM

401 EAST PALM AVENUE, TAMPA, FL 33602 FLORIDACOMMERCIALGROUP.COM



PROPERTY PHOTOS



**BROKERAGE DONE DIFFERENTLY**

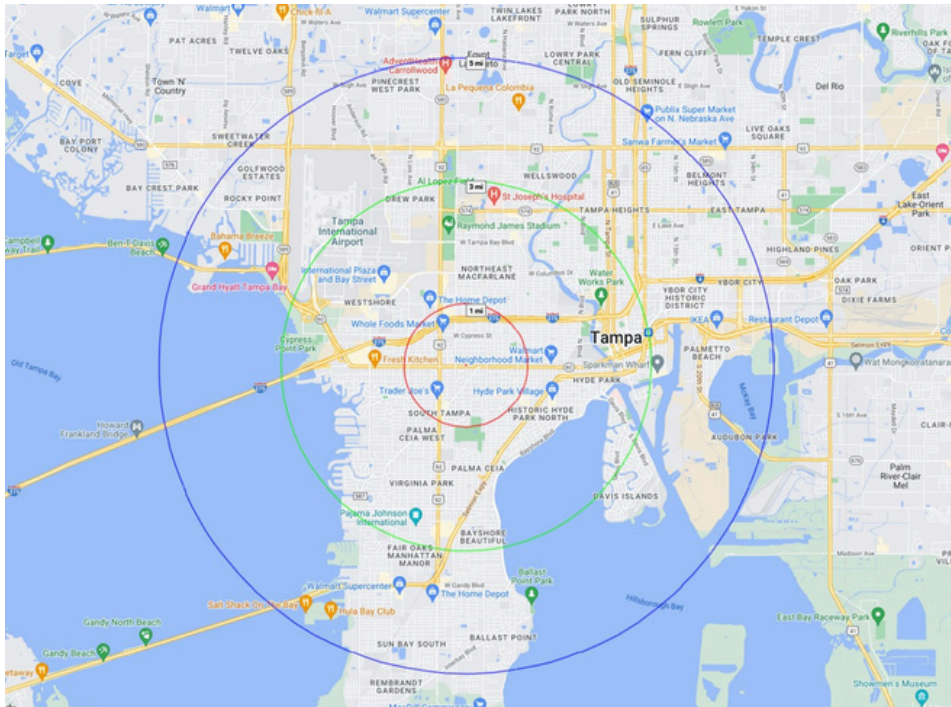
LISTING AGENT: TINA MARIE ELOIAN, CCIM | 813.935.9600 | TINA@FLORIDACOMMERCIALGROUP.COM

401 EAST PALM AVENUE, TAMPA, FL 33602 FLORIDACOMMERCIALGROUP.COM



**HIGHLIGHTS | DEMOGRAPHICS**

- **PRIME, PRIME, PRIME LOCATION!**
- Located ½ mile from the intersection of Kennedy Blvd. and Dale Mabry Hwy.
- Situated between the signalized intersections of Himes Avenue and MacDill Avenue
- Average Daily Traffic count of 27,500 vehicles per day
- Site offers huge potential for exposure and growth along the W. Kennedy Blvd. corridor
- The area is steadily growing with new retail, multi-family and single-family development and is surrounded by a diverse mix of commercial commerce, schools and residential communities
- Convenient to highways and major thoroughfares
- 15 minutes (approx.) to Tampa International Airport
- 5 minutes to the Interstate 275 South
- 3 miles west of Downtown Tampa
- Westshore, South Tampa, West Tampa, North Hyde Park, Palma Ceia, Oxford Park and Gray Gables Neighborhoods are all a short commute away
- Bring your plans and your business to this booming area of Kennedy Blvd. and be the happening new commercial occupant on the block!



<b>POPULATION</b>	<b>1 Mile</b>	<b>3 Miles</b>	<b>5 Miles</b>
<b>Total population</b>	15,488	106,610	236,012
<b>Average age</b>	39	39	39.1
<b>Average age (Male)</b>	37.8	38.2	38.6
<b>Average age (Female)</b>	39.2	40.2	39.8
<b>HOUSEHOLDS &amp; INCOME</b>	<b>1 Mile</b>	<b>3 Miles</b>	<b>5 Miles</b>
<b>Total households</b>	7,738	51,706	111,319
<b># of persons per HH</b>	2	2.1	2.1
<b>Average HH income</b>	\$104,116	\$110,372	\$89,957
<b>Average home value</b>	\$409,746	\$422,605	\$339,875

**CALL TODAY FOR ADDITIONAL PROPERTY DETAILS! 813.935.9600**

**BROKERAGE DONE DIFFERENTLY**

LISTING AGENT: TINA MARIE ELOIAN, CCIM | 813.935.9600 | TINA@FLORIDACOMMERCIALGROUP.COM

401 EAST PALM AVENUE, TAMPA, FL 33602 FLORIDACOMMERCIALGROUP.COM





## AREA HIGHLIGHTS | DIRECTIONS

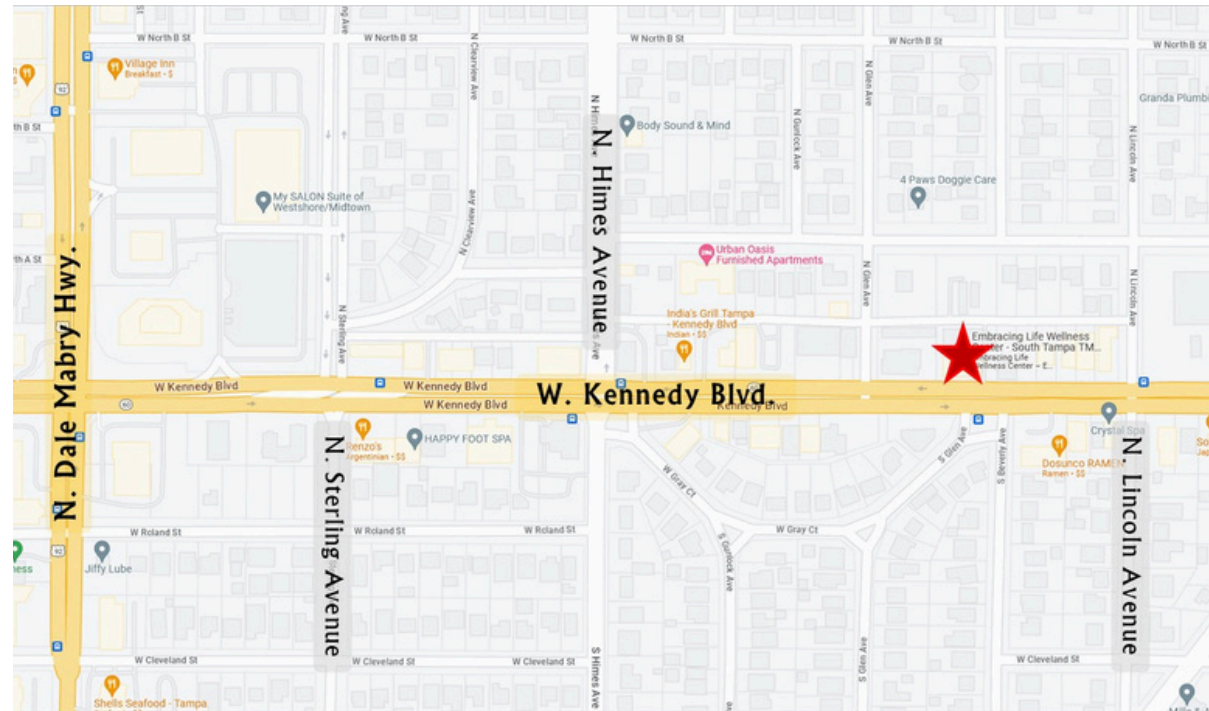


### AREA HIGHLIGHTS

Minutes from AdventHealth- South Tampa, Memorial Hospital, Bank of America, Western Union, 5th/3rd Bank, TD Bank, Bank of Central Tampa, FedEx, UPS, Office Depot, T-Mobile, The Vitamin Shoppe, Whole Foods Market, Sherwin Williams, Jiffy Lube, Advanced Auto, Sunoco Gas, Mobil Gas Station, 7-Eleven, Wawa, Chick-Fil-A, Einstein Bagels, Alessi Bakery, Krispy Kreme, Dunkin', Papa John's, Burger King, Village Inn, Outback Steak House, Acropolis Greek Taverna, Miguel's Mexican Grill, Yummy House, Carrabba's Italian Grill, J. Alexander's, Press Box Sports Bar, LA Fitness, Anytime Fitness and more.

### DRIVING DIRECTIONS:

**From Interstate 275, head west on 275 Southbound towards St. Pete. Take Exit 42 to Howard Avenue/ Armenia Avenue. Head west to MacDill Avenue. At the light, turn left. Head South on MacDill Avenue for approx. 1 mile. Turn right on Kennedy Blvd. Head west for 3/10ths of a mile. Arrive at the property on the right at 3333 W. Kennedy Blvd.**



**BROKERAGE DONE DIFFERENTLY**

LISTING AGENT: TINA MARIE ELOIAN, CCIM | 813.935.9600 | [TINA@FLORIDACOMMERCIALGROUP.COM](mailto:TINA@FLORIDACOMMERCIALGROUP.COM)

401 EAST PALM AVENUE, TAMPA, FL 33602 [FLORIDACOMMERCIALGROUP.COM](http://FLORIDACOMMERCIALGROUP.COM)



# Your Tampa Bay and Beyond Commercial Real Estate Experts

SALES • INVESTMENTS • LEASING • PROPERTY MANAGEMENT

When you're looking to engage in any commercial real estate transaction – including buying, selling, leasing, financing, or even developing real estate – using a CCIM for your transaction is the best investment you'll make. Backed by **knowledge, stability, and resources**, Florida Commercial Group is uniquely equipped to assist you in all your real estate needs.

Our boutique brokerage is recognized in the Tampa Bay area as an **authority on all types of properties** with a **commitment to excellence and exceptional service**. With over 20 years of experience in residential and commercial real estate brokerage, leasing, property management, development, and investment services our team of specialists offers you a full suite of comprehensive services.

**CALL OUR TEAM TODAY!**  
**813.935.9600**



THE MOST ADVANCED COMMERCIAL REAL ESTATE INVESTMENT SPECIALISTS ANYWHERE!  
CERTIFIED COMMERCIAL INVESTMENT MEMBER 2021

## How Can We Help?

- BUYER & SELLER REPRESENTATION
- TENANT & LANDLORD REPRESENTATION
- PROPERTY MANAGEMENT FOR OWNERS & FINANCIAL INSTITUTIONS
- VALUATION & ADVISORY SERVICES
- COMMERCIAL & RESIDENTIAL



This information is from sources deemed to be reliable. We are not responsible for misstatements of facts, errors or omissions, prior sale, change of price and/or terms or withdrawal from the market without notice. Buyer shall verify all information with their own representatives as well as state and local agencies.



**BROKERAGE DONE DIFFERENTLY**  
401 EAST PALM AVENUE, TAMPA, FL 33602  
FLORIDACOMMERCIALGROUP.COM  
OFFICE: 813.935.9600

**TINA MARIE ELOIAN**  
CCIM & BROKER

**MOBILE: 813.997.4321**

TINA@FLORIDACOMMERCIALGROUP.COM

