

**Class A Office Available For Lease**  
**127 Executive Parkway**  
**Milledgeville, GA 31061**



Summary

Area Info

Photos

Floor Plans

Aerial

Site Map



**CONTACT**

**Patty Burns, CCIM, ALC**  
478-746-9421 Office  
478-951-5100 Cell  
[patty@fickling.com](mailto:patty@fickling.com)

**Trip Wilhoit, CCIM, ALC**  
478-746-9421 Office  
478-960-4080 Cell  
[trip@fickling.com](mailto:trip@fickling.com)



577 Mulberry St, Suite 1100  
Macon, GA 31201  
478.746.9421 Office  
<https://commercial.fickling.com>

**PROPERTY INFORMATION**

**BUILDING**

**Property Address:** 127 Executive Parkway  
Milledgeville, GA 31061

**County:** Baldwin

**Building Size:** 4,383 SF

**Year Built:** 2001

**Utilities:** All Available

**Parking:** Paved

**Traffic Count:** 20,700 VPD - Roberson Mill Road

**SITE**

**Site Size:** ±1 Acre

**Parcel ID:** 069A 003

**Zoning:** Community Commercial

Demographics 2024	3 Miles	5 Miles	10 Miles
Population	16,128	27,734	48,533
Avg HH Income	\$68,927	\$94,248	\$95,323
Median Age	30.0	34.6	38.7

**LEASE RATE: \$12.00 - \$14.00/SF NNN**

**CONTACT**

**Patty Burns, CCIM, ALC**  
478-746-9421 Office  
478-951-5100 Cell  
patty@fickling.com

**Trip Wilhoit, CCIM, ALC**  
478-746-9421 Office  
478-960-4080 Cell  
trip@fickling.com



577 Mulberry St, Suite 1100  
Macon, GA 31201  
478.746.9421 Office  
<https://commercial.fickling.com>



# Class A Office Available For Lease

127 Executive Parkway  
Milledgeville, GA 31061



Summary

Area Info

Photos

Floor Plans

Aerial

Site Map

## PROPERTY INFORMATION

### BUILDING

This property has reception desk, one (1) meeting room, one (1) office, two (2) group rooms, three (3) storage closets, IT closet, break room, and two (2) restrooms.

Ideal for general office, medical, physical therapy, church, insurance, and many other office uses.

Neighbors include Citizens Bank of the South, State Farm, Century21, and Dollar General.

### LOCATION

Located in Executive Park, off of Roberson Mill Road near the intersection with Glynn Street (Highway 22). Building is 1 mile from the intersection of Roberson Mill Road and North Columbia Street (Highway 441), Milledgeville's main retail corridor.



### CONTACT

**Patty Burns, CCIM, ALC**  
478-746-9421 Office  
478-951-5100 Cell  
patty@fickling.com

**Trip Wilhoit, CCIM, ALC**  
478-746-9421 Office  
478-960-4080 Cell  
trip@fickling.com



577 Mulberry St, Suite 1100  
Macon, GA 31201  
478.746.9421 Office  
<https://commercial.fickling.com>

# Class A Office Available For Lease

127 Executive Parkway  
Milledgeville, GA 31061



Summary

Area Info

Photos

Floor Plans

Aerial

Site Map



## CONTACT

**Patty Burns, CCIM, ALC**  
478-746-9421 Office  
478-951-5100 Cell  
patty@fickling.com

**Trip Wilhoit, CCIM, ALC**  
478-746-9421 Office  
478-960-4080 Cell  
trip@fickling.com



577 Mulberry St, Suite 1100  
Macon, GA 31201  
478.746.9421 Office  
<https://commercial.fickling.com>

# Class A Office Available For Lease

127 Executive Parkway  
Milledgeville, GA 31061



Summary

Area Info

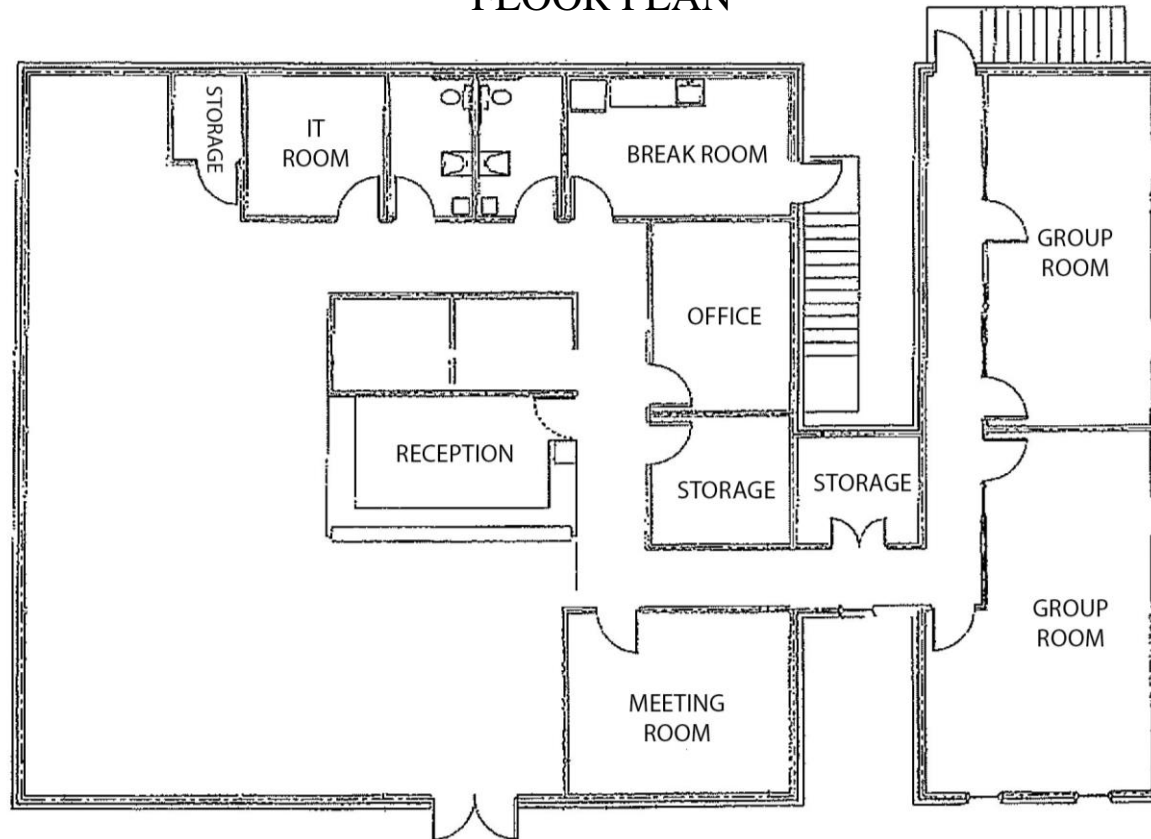
Photos

Floor Plans

Aerial

Site Map

## FLOOR PLAN



\*All measurements and all calculations of area are approximate and not guaranteed

### CONTACT

**Patty Burns, CCIM, ALC**  
478-746-9421 Office  
478-951-5100 Cell  
patty@fickling.com

**Trip Wilhoit, CCIM, ALC**  
478-746-9421 Office  
478-960-4080 Cell  
trip@fickling.com



577 Mulberry St, Suite 1100  
Macon, GA 31201  
478.746.9421 Office  
<https://commercial.fickling.com>



# Class A Office Available For Lease

## 127 Executive Parkway Milledgeville, GA 31061



Summary

Area Info

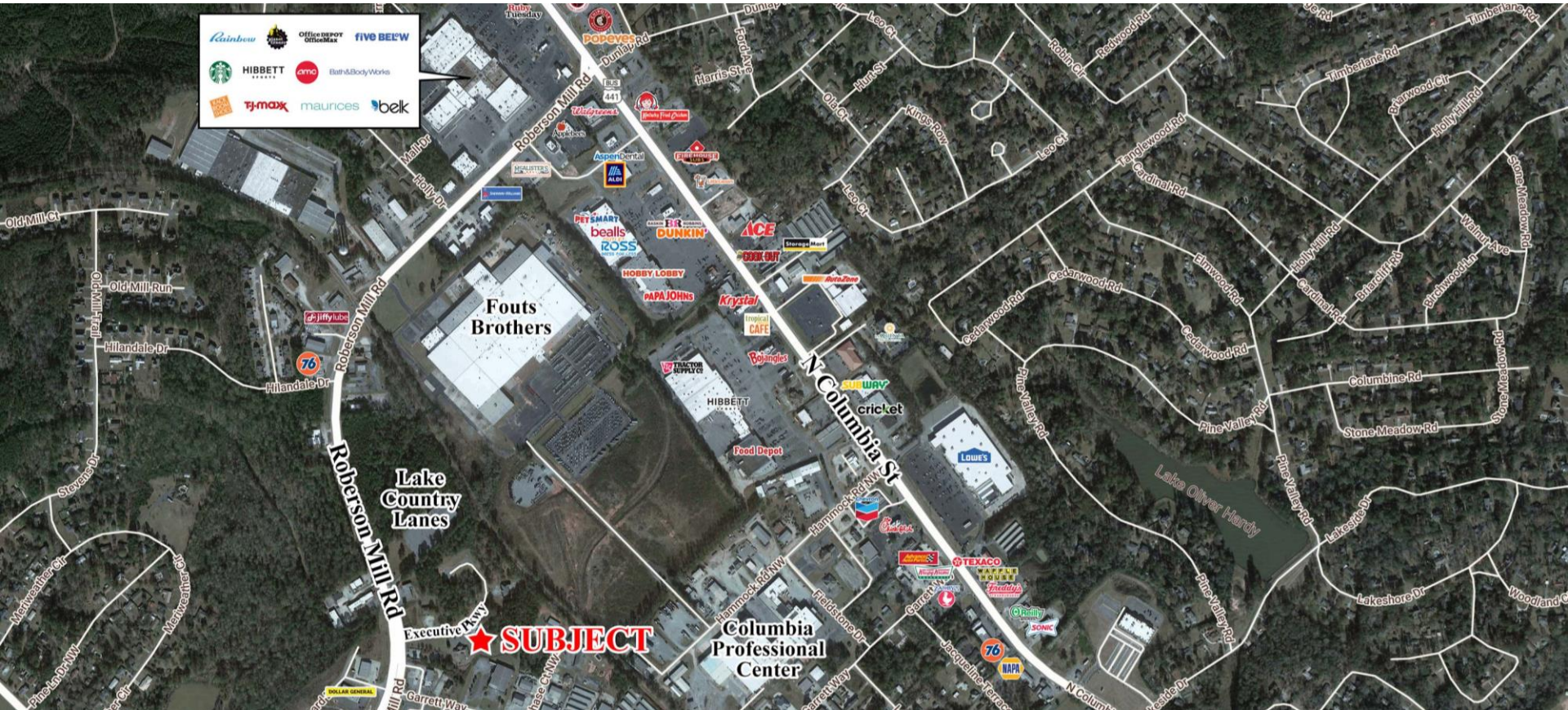
Photos

Floor Plans

Aerial

Site Map

## AERIAL



### CONTACT

**Patty Burns, CCIM, ALC**  
478-746-9421 Office  
478-951-5100 Cell  
patty@fickling.com

**Trip Wilhoit, CCIM, ALC**  
478-746-9421 Office  
478-960-4080 Cell  
trip@fickling.com



577 Mulberry St, Suite 1100  
Macon, GA 31201  
478.746.9421 Office  
<https://commercial.fickling.com>



**Class A Office Available For Lease**  
**127 Executive Parkway**  
**Milledgeville, GA 31061**



Summary

Area Info

Photos

Floor Plans

Aerial

Site Map

**SITE MAP**



**CONTACT**

**Patty Burns, CCIM, ALC**  
478-746-9421 Office  
478-951-5100 Cell  
patty@fickling.com

**Trip Wilhoit, CCIM, ALC**  
478-746-9421 Office  
478-960-4080 Cell  
trip@fickling.com



577 Mulberry St, Suite 1100  
Macon, GA 31201  
478.746.9421 Office  
<https://commercial.fickling.com>