

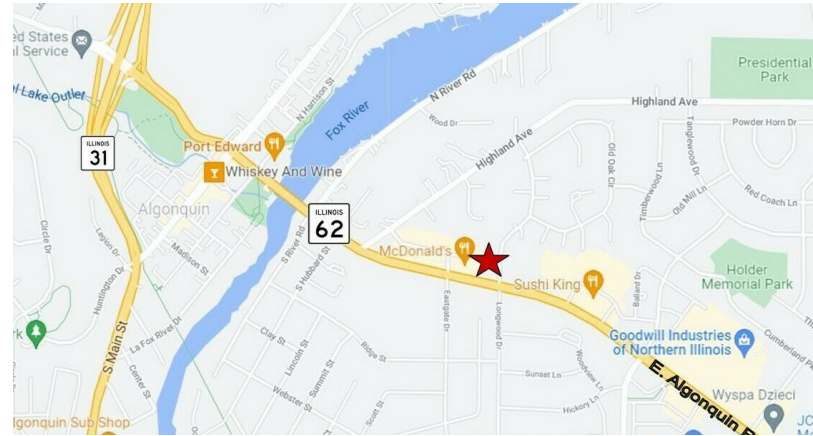
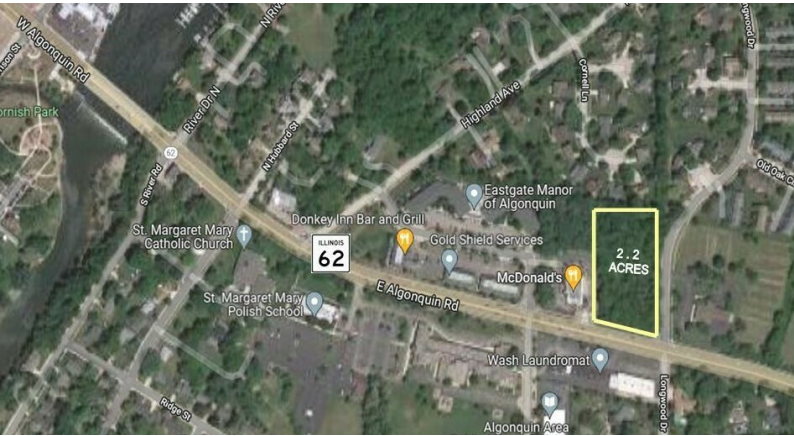
# 600 E Algonquin Rd.

Algonquin, IL 60102

# For Sale

MLS #12105384

LAND



LAND

2.2 ACRES

\$415,000

(\$4.33 PSF)

## 2.2 ACRES SOFT COMMERCIAL CORNER

2.2 acres commercial corner with 229' frontage on Algonquin road, adjacent to busy McDonald's with cross access agreement to traffic light. Superb demographics and traffic counts of 37,700 vehicles per day.

Sale subject to review/approval by court. Seller to pay recapture fees. B1 zoning.

37,700 VPD on Route 62.

Demographics	1 Mile	3 Miles	5 Miles
Total Population	7,408	52,453	141,677
Average HH Income	\$98,483	\$105,169	\$107,400

### Specifications

Description:	Corner Commercial Lot
Land Size:	2.2 Acres, 95,832 SF
Topography:	Level
Environmental Status:	TBA
Utilities:	To Site
Sewer/Water:	City
Frontage Dimensions:	229' on Route 62
Zoning:	B-1
Taxes:	\$9,976.32 (2023)
PIN #:	19-34-204-008

[CLICK HERE TO VIEW OUR WEBSITE](#)

No warranty or representation is made as to the accuracy of the foregoing information. Terms of sale or lease and availability are subject to change or withdrawal without notice. This document is for information purposes only. No offer of sub-agency is being made.



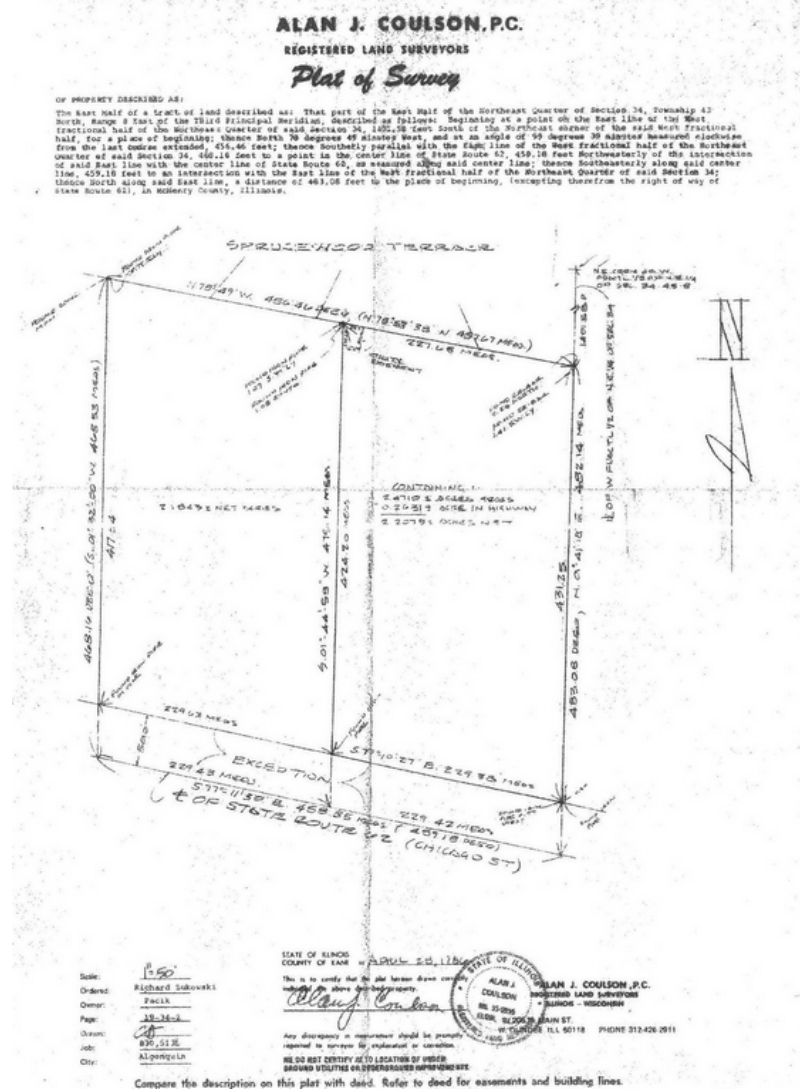
www.PremierCommercialRealty.com | 847.854.2300 | 9225 S. Route 31, Lake in the Hills, IL 60156

Senior Broker  
**Bruce Kaplan**  
BruceK@PremierCommercialRealty.com  
O: 847.854.2300 xx20 C: 847.507.1759

600 E Algonquin Rd.  
Algonquin, IL 60102

For Sale

LAND



CLICK HERE TO VIEW OUR WEBSITE

No warranty or representation is made as to the accuracy of the foregoing information. Terms of sale or lease and availability are subject to change or withdrawal without notice. This document is for information purposes only. No offer of sub-agency is being made.



www.PremierCommercialRealty.com | 847.854.2300 | 9225 S. Route 31, Lake in the Hills, IL 60156

Senior Broker  
Bruce Kaplan  
BruceK@PremierCommercialRealty.com  
O: 847.854.2300 xx20 C: 847.507.1759