



**400 COUNTYLINE CT, UNITS 11 & 12, OAKLAND, FL 34787**

Contact us: (407) 338-4981 / (407) 850-8920 - [info@floridalegacyrealty.com](mailto:info@floridalegacyrealty.com)



**400 COUNTYLINE CT, UNITS 11 & 12, OAKLAND, FL 34787**

Contact us: (407) 338-4981 / (407) 850-8920 - [info@floridalegacyrealty.com](mailto:info@floridalegacyrealty.com)

400 COUNTYLINE CT, UNITS 11 & 12, OAKLAND, FL 34787



## *PROPERTY DESCRIPTION*

Contact us: (407) 338-4981 / (407) 850-8920 - [info@floridalegacyrealty.com](mailto:info@floridalegacyrealty.com)

# PROPERTY DESCRIPTION

Property Address: 400 Countyline Ct,  
Oakland, FL, 34787

Rentable Building Area: 11,200 sqft

Zoning: I-1

Actual Year Built: 2007

County: Orange

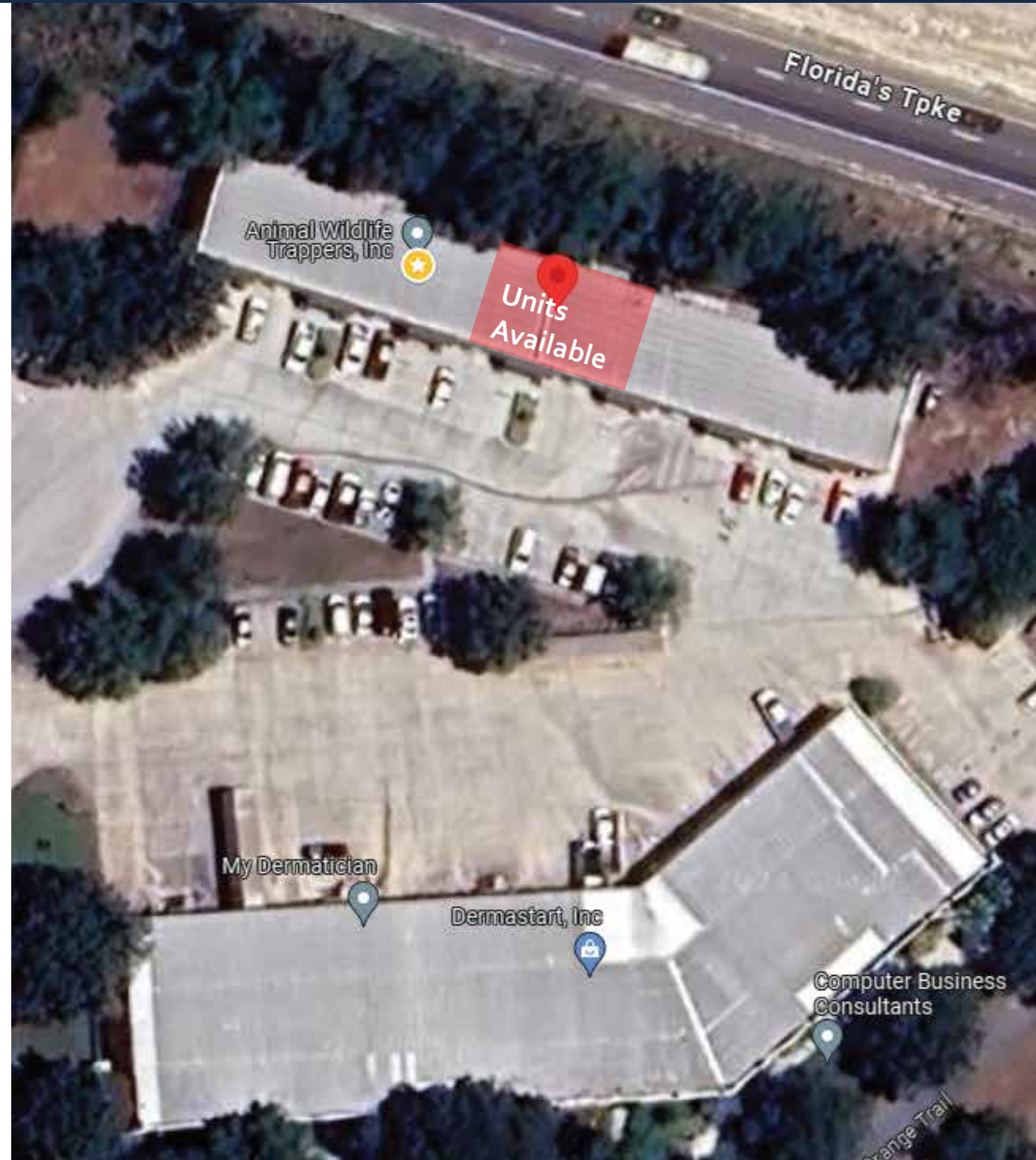
Property Type: Industrial Warehouse

Tenancy: Single

Parking: 4 spaces

**UNIT AVAILABLE #11 &12 together**

**SQ FT: 1560**



**400 COUNTYLINE CT, UNITS 11 & 12, OAKLAND, FL 34787**

Contact us: (407) 338-4981 / (407) 850-8920 - [info@floridalegacyrealty.com](mailto:info@floridalegacyrealty.com)



**400 COUNTYLINE CT, UNITS 11 & 12, OAKLAND, FL 34787**

Contact us: (407) 338-4981 / (407) 850-8920 - [info@floridalegacyrealty.com](mailto:info@floridalegacyrealty.com)

GROSS RENT

Base Rent : \$3,120 /Month  
Sale Tax : \$78

---

TOTAL RENT: \$3,198

PRICE	\$3.120
PROPERTY SIZE	1560 SF
PRICE/SF MONTH	\$2

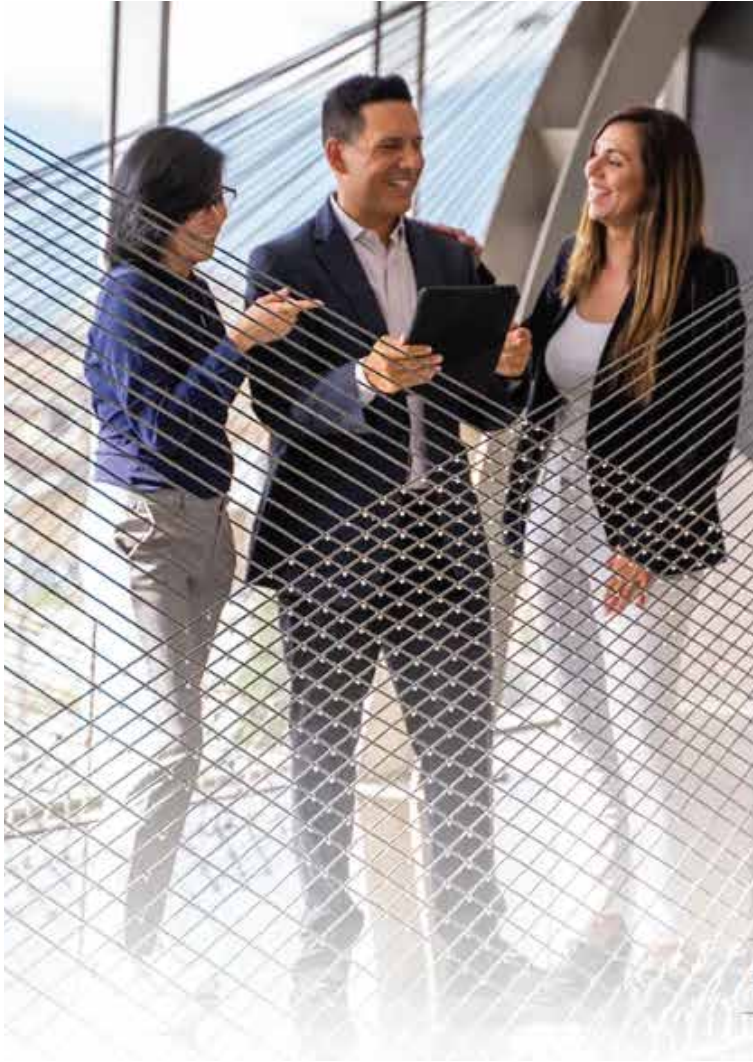
**400 COUNTYLINE CT, UNITS 11 & 12, OAKLAND, FL 34787**

Contact us: (407) 338-4981 / (407) 850-8920 - [info@floridalegacyrealty.com](mailto:info@floridalegacyrealty.com)



**400 COUNTYLINE CT, UNITS 11 & 12, OAKLAND, FL 34787**

Contact us: (407) 338-4981 / (407) 850-8920 - [info@floridalegacyrealty.com](mailto:info@floridalegacyrealty.com)



Welcome to Florida Legacy Realty! We are dedicated to providing exceptional services tailored to the unique needs of our tenants. Our goal is to maximize your business's success by offering a supportive and efficient environment.

At our company, we understand that commercial tenants have specific requirements and objectives. We work closely with you to ensure that your space meets your business needs.

We take pride in the maintenance and management of our commercial properties. Our proactive approach ensures that your space is well-maintained and in optimal condition, providing a professional and inviting atmosphere for your customers and employees.

In addition, we understand the importance of location and accessibility for your commercial venture. Our portfolio includes prime locations in thriving business districts, offering excellent visibility and access to key amenities. We strive to provide you with a strategic and advantageous location that enhances your business opportunities.

Furthermore, we value clear and open communication with our commercial tenants. Our responsive team is always available to address any concerns or inquiries promptly. We aim to build long-lasting partnerships and create a collaborative environment where your feedback is valued and acted upon.

We are committed to ensuring that your experience as a commercial tenant is productive and rewarding. Thank you for choosing us as your property management partner, and we look forward to helping you achieve your business goals.

# *FLORIDA LEGACY REALTY TEAM*

[www.floridalegacyrealty.com](http://www.floridalegacyrealty.com)