

**FOR SALE**  
\$295,000



### Property Highlights

- 1.2 acres B2A corner vacant Land
- Prime location for development in Ocala, FL
- Traffic: 9,600 CPD NE 14th St, visible to 22,100 CPD SR40
- High visibility at NE 14th St & NE 39th Ave
- Accessible to major transportation routes.
- Cross access ingress with a busy restaurant

Demographics	0.3 Miles	0.5 Miles	1 Mile
<b>Total Households</b>	426	1,057	2,877
<b>Total Population</b>	865	2,161	6,148
<b>Average HH Income</b>	\$73,965	\$73,584	\$75,753

**Randy Buss, CCIM, SIOR**  
Managing Partner  
352.482.0777 x7214  
randy@naiheritage.com

2605 SW 33rd St. Suite 200  
Ocala, FL 34471  
352.482.0777  
[naiheritage.com](http://naiheritage.com)



**Randy Buss, CCIM, SIOR**  
Managing Partner  
352.482.0777 x7214  
randy@naiheritage.com

2605 SW 33rd St. Suite 200  
Ocala, FL 34471  
352.482.0777  
[naiheritage.com](http://naiheritage.com)



**Randy Buss, CCIM, SIOR**  
Managing Partner  
352.482.0777 x7214  
randy@naiheritage.com

2605 SW 33rd St. Suite 200  
Ocala, FL 34471  
352.482.0777  
[naiheritage.com](http://naiheritage.com)



Commercial Real Estate Services, Worldwide.

# 1.2 Ac Corner Lot - NE 14th Street

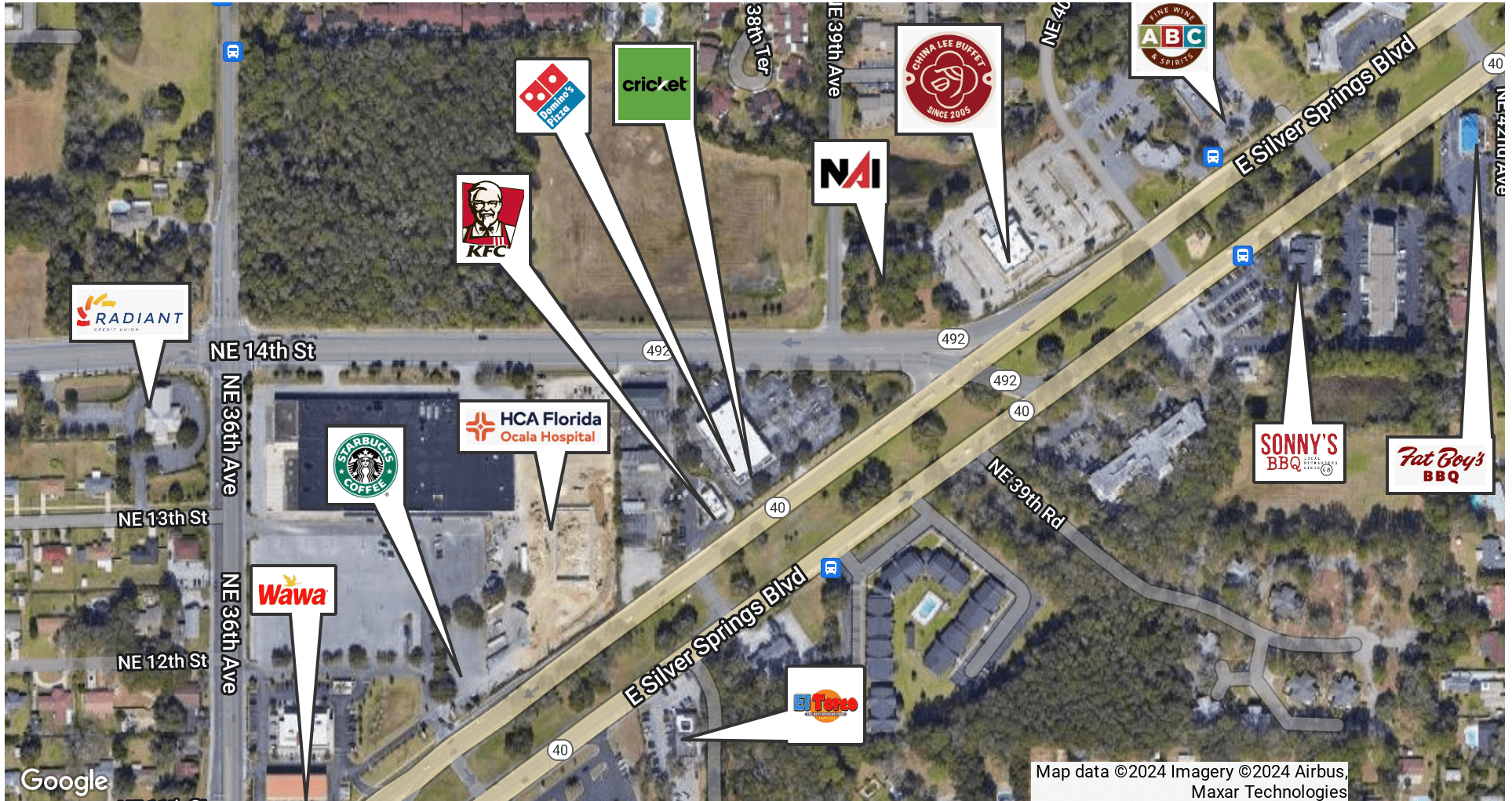
NE 14th St & NE 39th Ave, Ocala, FL 34470



**Randy Buss, CCIM, SIOR**  
Managing Partner  
352.482.0777 x7214  
randy@naiheritage.com

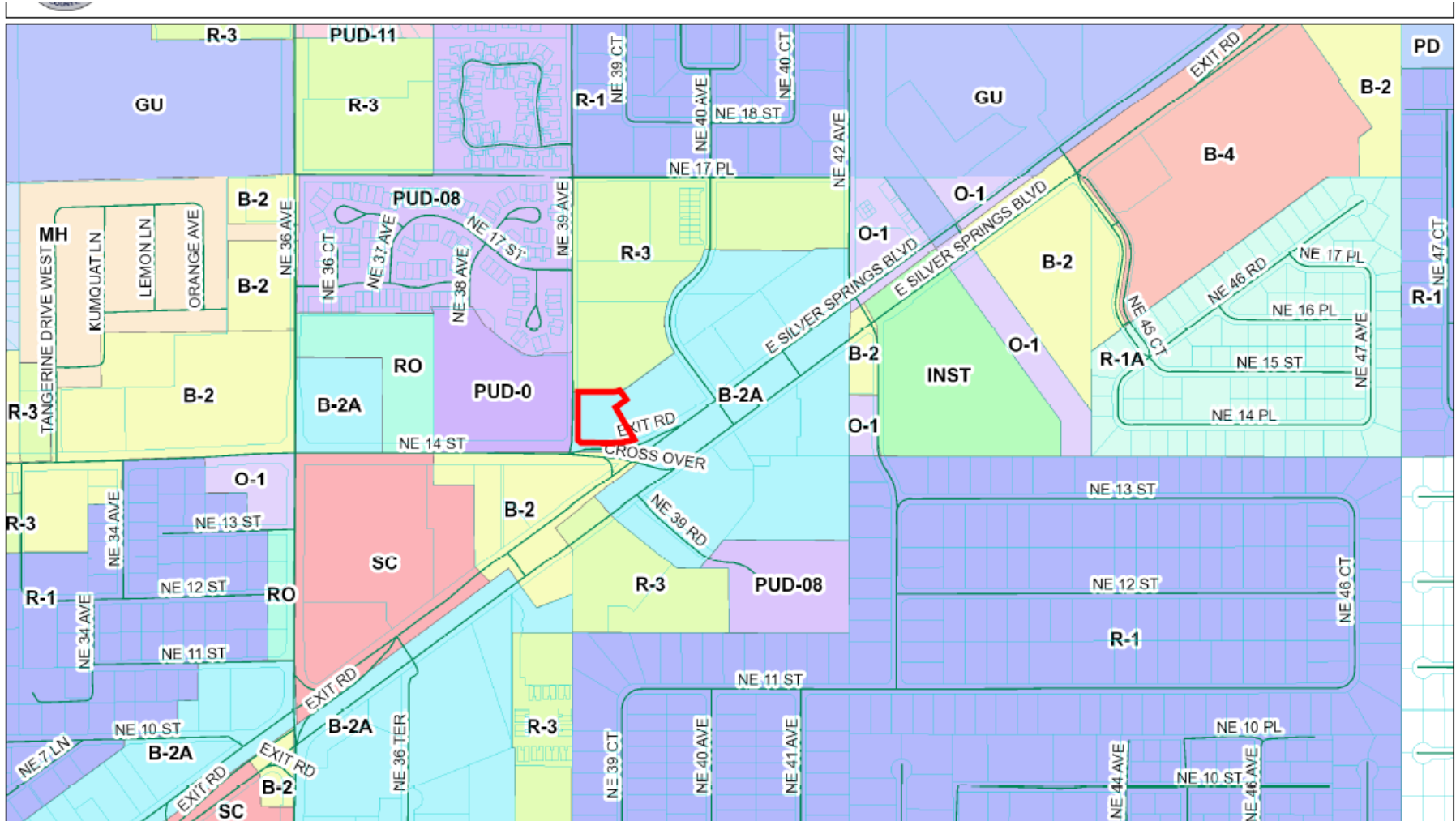
2605 SW 33rd St. Suite 200  
Ocala, FL 34471  
352.482.0777  
[naiheritage.com](http://naiheritage.com)

We obtained the information above from sources we believe to be reliable. However, we have not verified its accuracy and make no guarantee, warranty or representation about it. It is submitted subject to the possibility of errors, omissions, change of price, rental or other conditions, prior sale, lease or financing, or withdrawal without notice. We include projections, opinions, assumptions or estimates for example only, and they may not represent current or future performance of the property. You and your tax and legal advisors should conduct your own investigation of the property and transaction.



**Randy Buss, CCIM, SIOR**  
Managing Partner  
352.482.0777 x7214  
randy@naiheritage.com

2605 SW 33rd St. Suite 200  
Ocala, FL 34471  
352.482.0777  
[naiheritage.com](http://naiheritage.com)



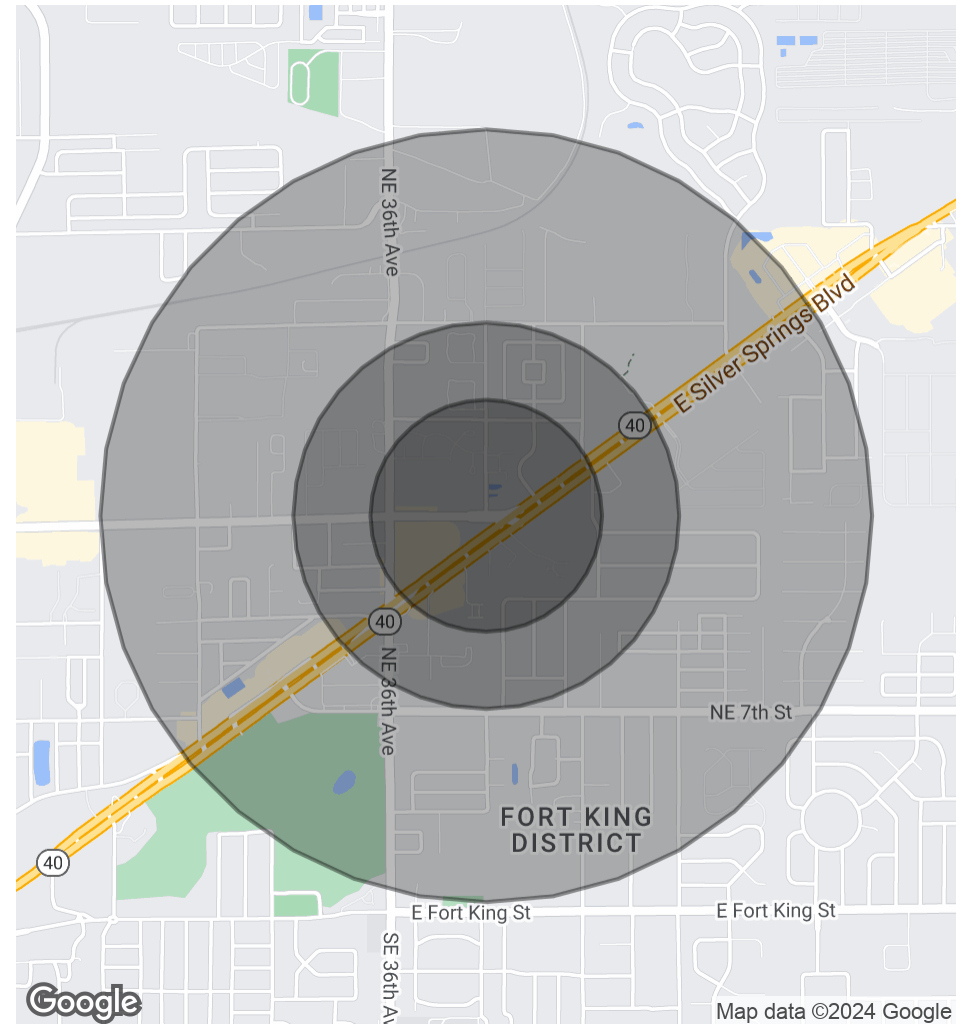
**Randy Buss, CCIM, SIOR**  
 Managing Partner  
 352.482.0777 x7214  
 randy@naiheritage.com

2605 SW 33rd St. Suite 200  
 Ocala, FL 34471  
 352.482.0777  
[naiheritage.com](http://naiheritage.com)

Population	0.3 Miles	0.5 Miles	1 Mile
<b>Total Population</b>	865	2,161	6,148
<b>Average Age</b>	50	50	48
<b>Average Age (Male)</b>	46	46	44
<b>Average Age (Female)</b>	53	53	50

Households & Income	0.3 Miles	0.5 Miles	1 Mile
<b>Total Households</b>	426	1,057	2,877
<b># of Persons per HH</b>	2	2	2.1
<b>Average HH Income</b>	\$73,965	\$73,584	\$75,753
<b>Average House Value</b>	\$216,977	\$215,952	\$219,257

Demographics data derived from AlphaMap



**Randy Buss, CCIM, SIOR**  
 Managing Partner  
 352.482.0777 x7214  
 randy@naiheritage.com

2605 SW 33rd St. Suite 200  
 Ocala, FL 34471  
 352.482.0777  
[naiheritage.com](http://naiheritage.com)