

SURVEY FOR
J. R. FRANKLIN
 &
TRACT 1
HAL ROGERS
 2 SOUTH AVENUE, CARTERSVILLE, GA 30120
 PHONE (770) 382-0457 FAX (770) 387-0543
 REGISTERED LAND SURVEYOR NO. 1803

BARTOW COUNTY
 RECEIVED FOR RECORD
 DECEMBER 12, 2001
 12:06 CHD 1206-4-PL1

LOT 5, BROOKWOOD SUBDIVISION,
 IN LAND LOTS 54, 91 & 92,
 4th DISTRICT, 3rd SECTION,
 BARTOW COUNTY, GEORGIA

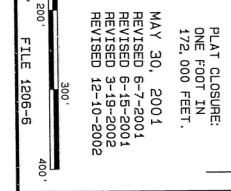
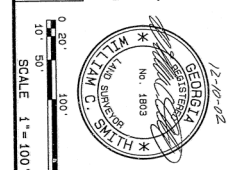
FIELD TRAVERSE:
 CLOSURE: ONE FOOT IN 8,000 FEET
 USING A LETTZ SET 3
 ANGULAR ERROR: 0'00.08" PER ANGLE
 POINT USING A LETTZ SET 3
 ADJUSTED: USING THE COMPASS RULE.

SMITH & SMITH LAND SURVEYORS, P. C.
 SURVEYORS & ENGINEERS
 2 SOUTH AVENUE, CARTERSVILLE, GA 30120
 PHONE (770) 382-0457 FAX (770) 387-0543
 REGISTERED LAND SURVEYOR NO. 1803

NOTE: IRON PINS ARE 1/2" REBAR
 EXCEPT AS SHOWN.

PLAT CLOSURE:
 ONE FOOT IN
 172,000 FEET.

MAY 30, 2001
 REVISED 6-7-2001
 REVISED 5-12-2002
 REVISED 12-10-2002



MAG. NORTH