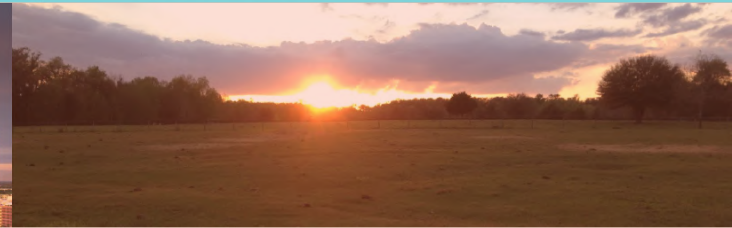
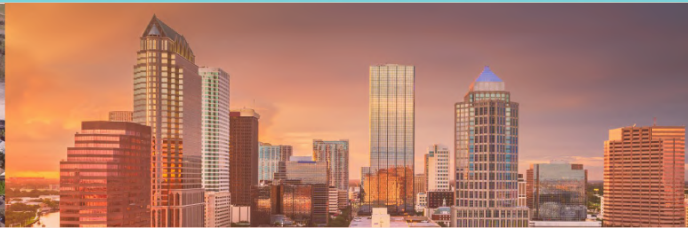


We know this land.



Eshenbaugh
LAND COMPANY



The Dirt Dog

304 S. WILLOW AVENUE

TAMPA, FL 33606

813.287.8787

www.thedirtdog.com

Property Description



PROPERTY DESCRIPTION

The opportunity is to purchase 8.2 acres of commercial land on County Road 52 in Pasco County. It has 210 feet of frontage on the highway and is located within the city of San Antonio.

The property was rezoned to PUD within the City of San Antonio. This allows for a wide range of commercial uses and entitlements are in place for future development. The PUD allows for all C-2 (General Commercial) zoning uses, and includes a 200 foot setback at the rear of the property. Examples of permitted uses include but are not limited to: self-storage, retail, medical, contractor's office and storage, restaurants, hotel, building supply, and machinery repair.

LOCATION DESCRIPTION

The property is located on the north side of County Road 52 in San Antonio in Pasco County. The parcel sits between Mirada Boulevard and Curley Street. Mirada is a 0.5 miles away, Saint Leo University is 1.6 miles away, and Lake Jovita is 1.5 miles away. Local shops, restaurants, and medical are located within half of a mile.

There is rapid growth occurring near the property, with projects including Double Branch, Mirada, Abbey Crossings, Leo at Cypress Creek, Q Terra, Villas at Connected City, and DHIC Mirada combining for more than 11,000 homes planned or under construction. Additionally, there's a new Advent Health Hospital and Publix just down the road, as well as (planned) Amazon and Target 1M+ SF distribution centers.

SIZE

8.2 acres

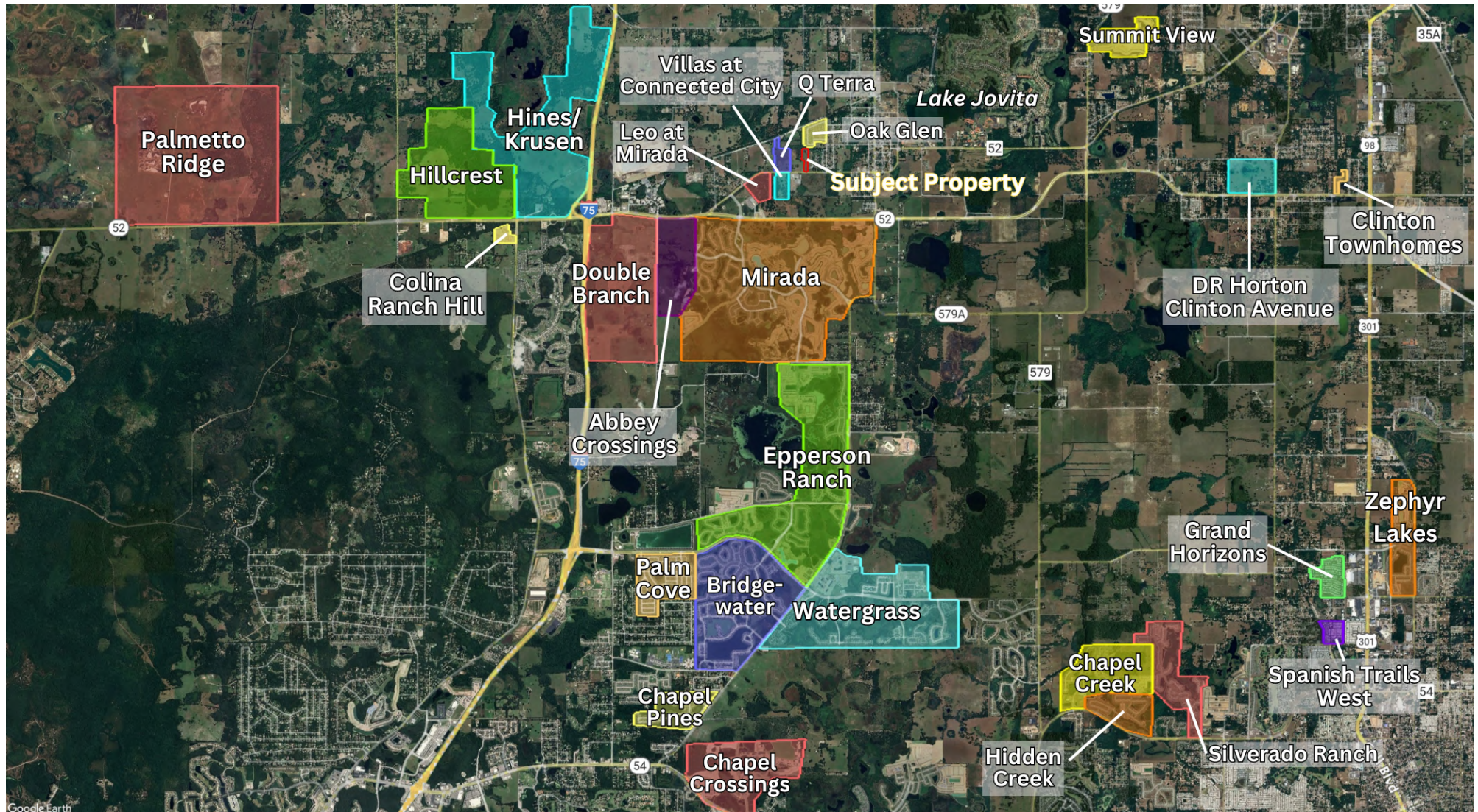
ZONING

PUD that allows for C-2 (General Commercial) uses

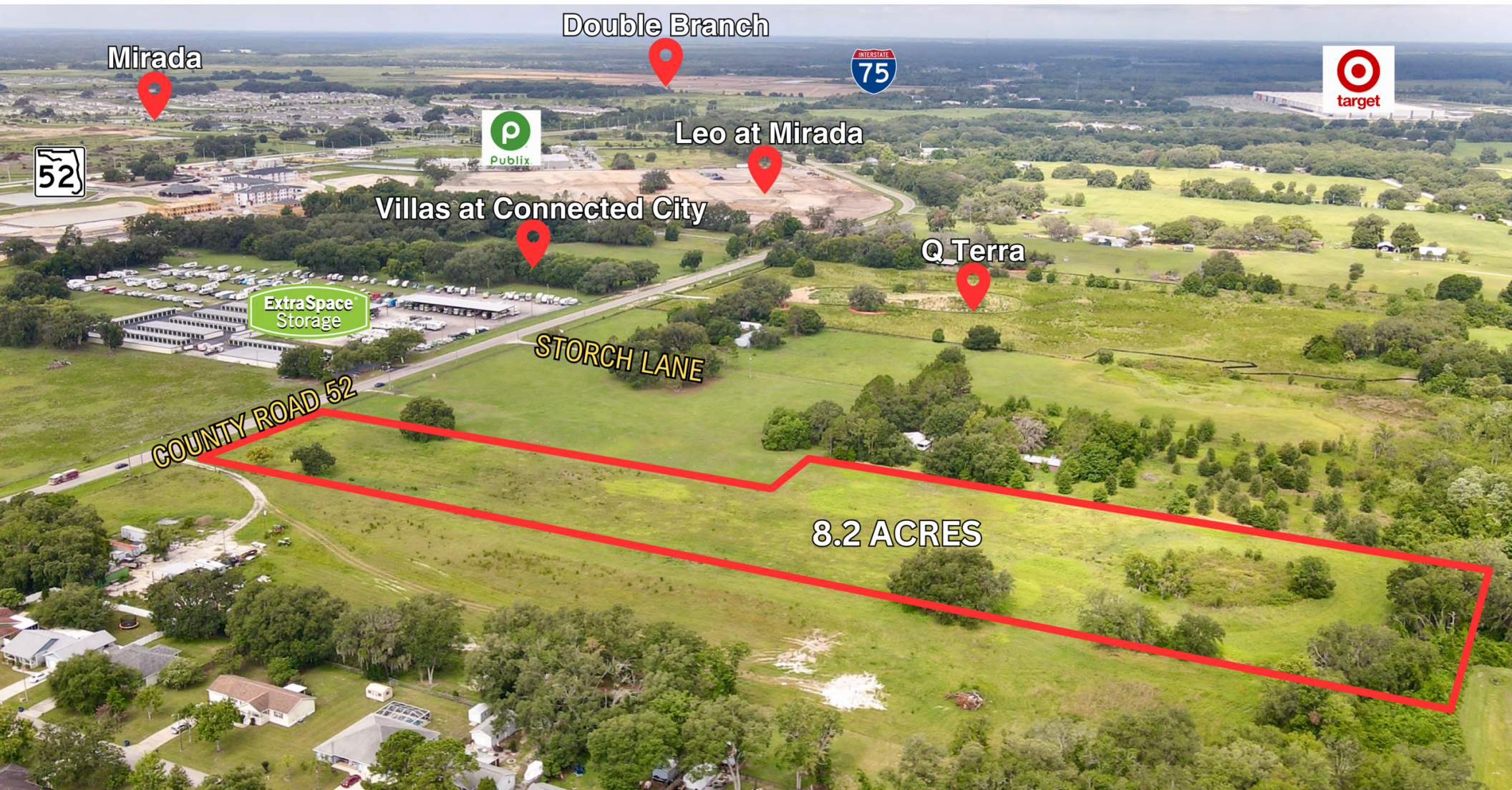
PRICE

\$3,200,000

Development Map



Developmental Aerial



Developmental Aerial



Drone Aerials



Demographics Map & Report

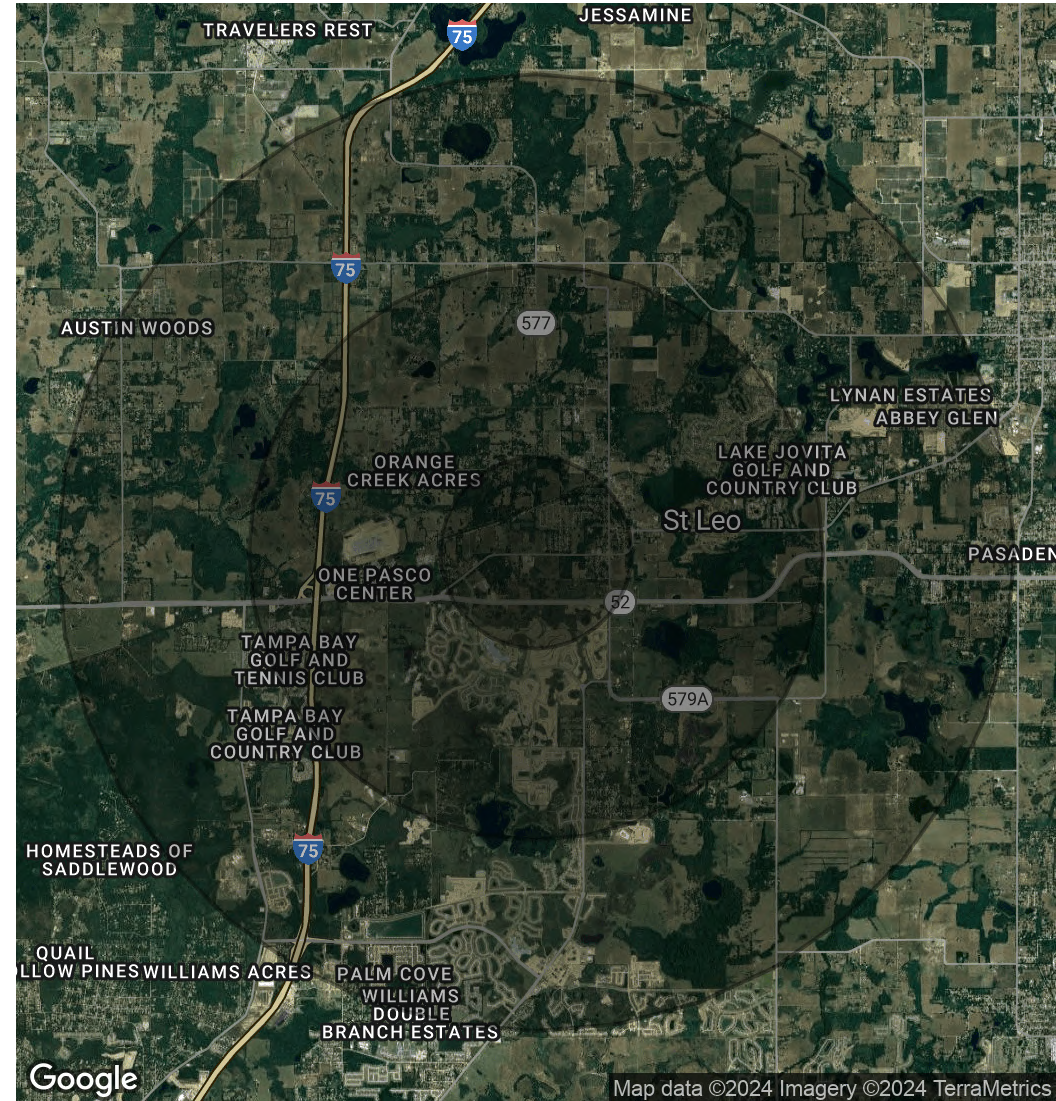
POPULATION

	1 MILE	3 MILES	5 MILES
Total Population	1,561	9,366	29,919
Average Age	39	43	42
Average Age (Male)	39	44	41
Average Age (Female)	39	43	43

HOUSEHOLDS & INCOME

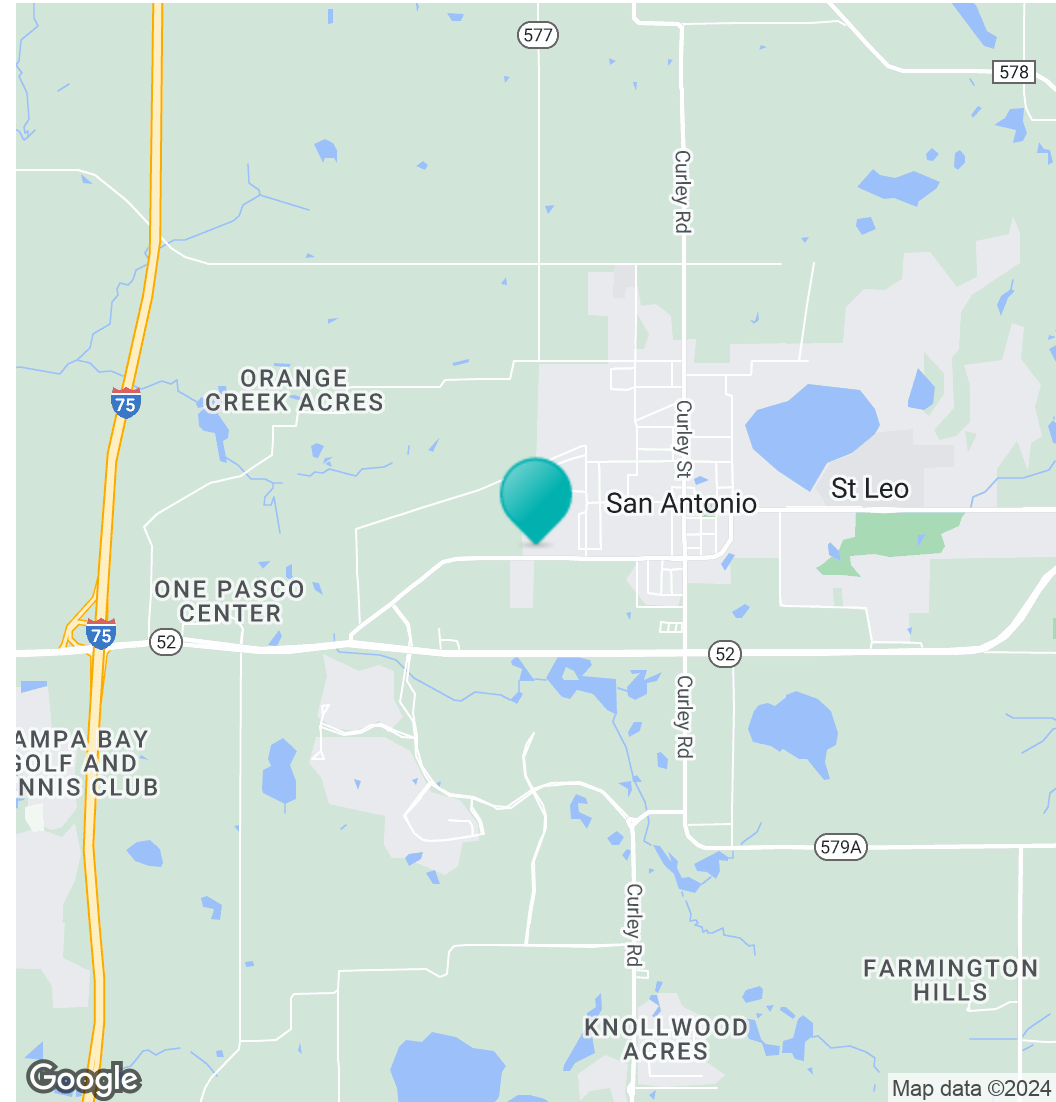
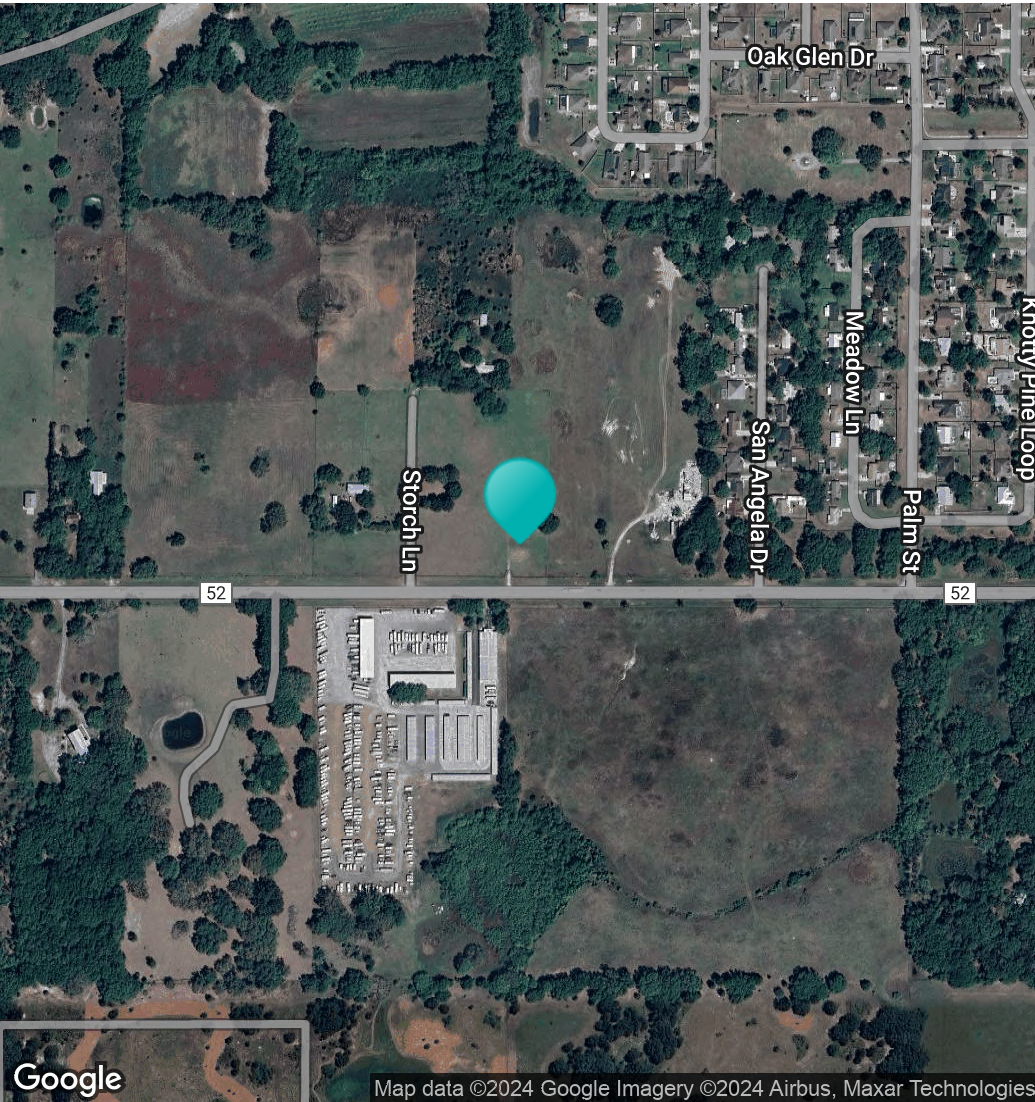
	1 MILE	3 MILES	5 MILES
Total Households	512	3,018	10,512
# of Persons per HH	3	3.1	2.8
Average HH Income	\$126,425	\$135,571	\$128,693
Average House Value	\$498,180	\$530,218	\$442,570

Demographics data derived from AlphaMap



Map data ©2024 Imagery ©2024 TerraMetrics

Location Maps



Confidentiality & Disclaimer

All materials and information received or derived from Eshenbaugh Land Company, LLC its directors, officers, agents, advisors, affiliates and/or any third party sources are provided without representation or warranty as to completeness, veracity, or accuracy, condition of the property, compliance or lack of compliance with applicable governmental requirements, developability or suitability, financial performance of the property, projected financial performance of the property for any party's intended use or any and all other matters.

Neither Eshenbaugh Land Company, LLC its directors, officers, agents, advisors, or affiliates makes any representation or warranty, express or implied, as to accuracy or completeness of the any materials or information provided, derived, or received. Materials and information from any source, whether written or verbal, that may be furnished for review are not a substitute for a party's active conduct of its own due diligence to determine these and other matters of significance to such party. Eshenbaugh Land Company, LLC will not investigate or verify any such matters or conduct due diligence for a party unless otherwise agreed in writing.

EACH PARTY SHALL CONDUCT ITS OWN INDEPENDENT INVESTIGATION AND DUE DILIGENCE.

Any party contemplating or under contract or in escrow for a transaction is urged to verify all information and to conduct their own inspections and investigations including through appropriate third party independent professionals selected by such party. All financial data should be verified by the party including by obtaining and reading applicable documents and reports and consulting appropriate independent professionals. Eshenbaugh Land Company, LLC makes no warranties and/or representations

regarding the veracity, completeness, or relevance of any financial data or assumptions. Eshenbaugh Land Company, LLC does not serve as a financial advisor to any party regarding any proposed transaction. All data and assumptions regarding financial performance, including that used for financial modeling purposes, may differ from actual data or performance. Any estimates of market rents and/or projected rents that may be provided to a party do not necessarily mean that rents can be established at or increased to that level. Parties must evaluate any applicable contractual and governmental limitations as well as market conditions, vacancy factors and other issues in order to determine rents from or for the property.

Legal questions should be discussed by the party with an attorney. Tax questions should be discussed by the party with a certified public accountant or tax attorney. Title questions should be discussed by the party with a title officer or attorney. Questions regarding the condition of the property and whether the property complies with applicable governmental requirements should be discussed by the party with appropriate engineers, architects, contractors, other consultants and governmental agencies. All properties and services are marketed by Eshenbaugh Land Company, LLC in compliance with all applicable fair housing and equal opportunity laws.

Eshenbaugh Land Company is a licensed real estate brokerage firm in Florida and William A. Eshenbaugh is the broker of record.