

**\$2,100** monthly modified gross

**Unit B for Lease**

**Available**

**FOR LEASE**



**Property Features**

**443 W Morton Avenue  
Porterville, TULARE COUNTY, CA**

- Offices (4) available: see reverse side
  - office 4 could be used as a conference room or breakroom
- Fenced w/ 1 Handicap space & side parking
- Shared: gated parking, trash, & recycle
- Utilities: sewer, trash, & water included
- Past use: medical
- Zoning: PO-D



**For more  
Information contact:**

**Clare Whitlatch, GRI**  
Broker

DRE Lic.# 01898351

**559-737-1189**

**clare@whitlatch.net**

(see reverse side for more pictures & floor plan)

# Available Unit B

Waiting area and  
Reception office

443 W Morton Ave

Porterville, TULARE COUNTY, CA

FOR LEASE \$2,100



# Available Unit B

Waiting area and  
Reception office

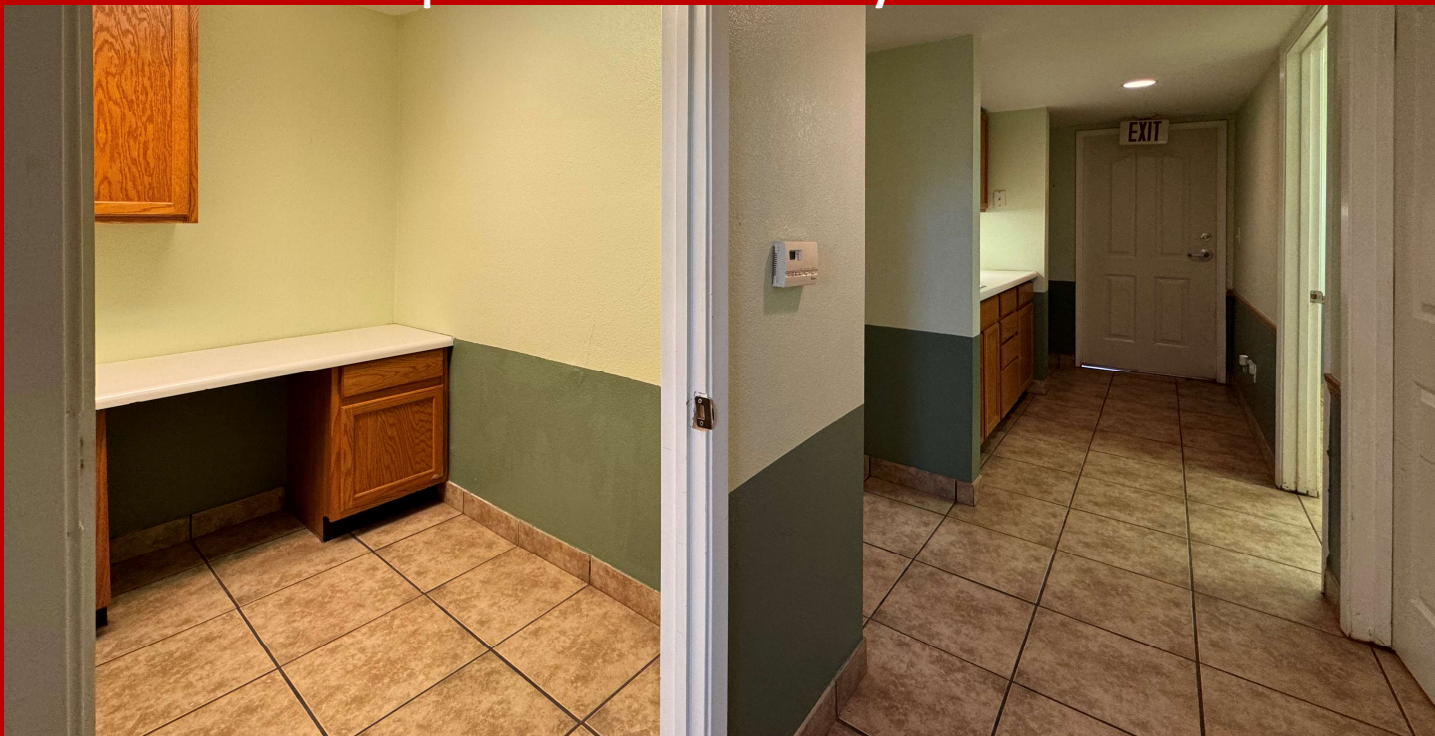
443 W Morton Ave

Porterville, TULARE COUNTY, CA

Entrance to waiting area



Reception area and hallway to offices



FOR LEASE \$2,100

**3 Offices w/ sink**

**443 W Morton Ave.  
Porterville, TULARE COUNTY, CA**

**FOR LEASE \$2,100**



**Available**



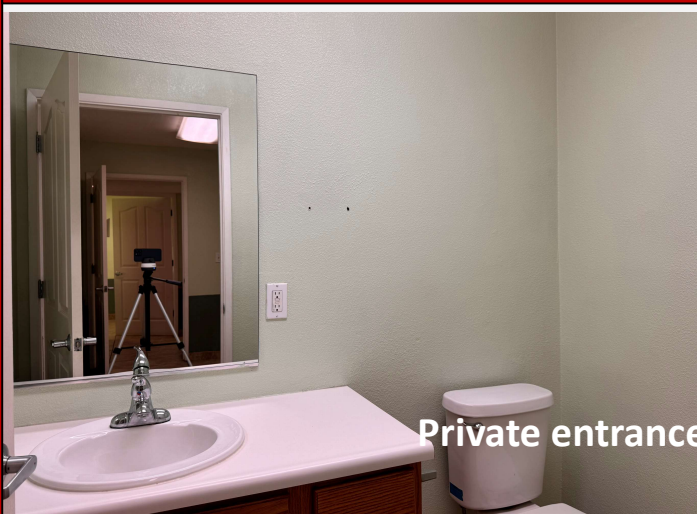
**1 Private office  
w/ private entrance in back**

**Available**

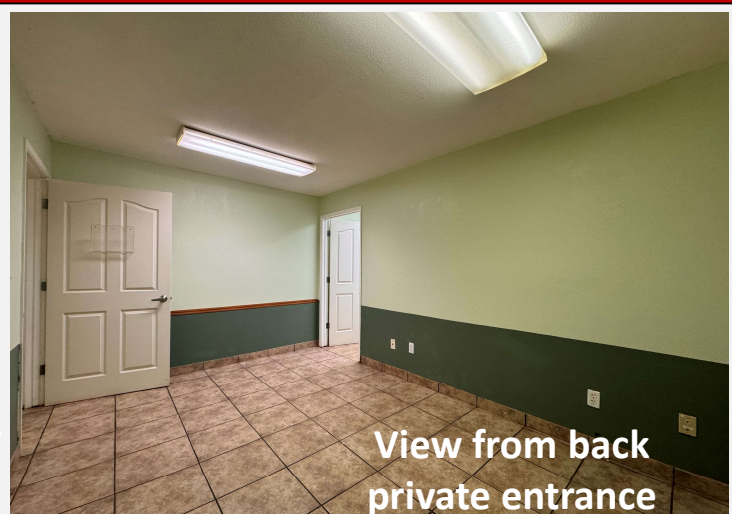
**443 W Morton Ave.  
Porterville, TULARE COUNTY, CA**



**Office 4 w/ private back entrance**



Private entrance



View from back  
private entrance

**FOR LEASE \$2,100**

# FOR LEASE

443 West Morton Avenue, Porterville, CA, USA

West Morton Avenue

Automatic Gate

Handicap  
Parking here

For Lease  
\$2,100

SIZE AND DIMENSIONS ARE APPROXIMATE; ACTUAL MAY VARY.

LEASED

LEASED

443 W Morton Ave

-  = Available
-  = Pending
-  = LEASED



Side Parking here

For an interactive tour Scan with  
your smartphone camera



## Floor Plan 4 offices available

For more Information contact:

Clare Whitlatch, GRI

Broker

DRE Lic.# 01898351

559-737-1189

clare@whitlatch.net

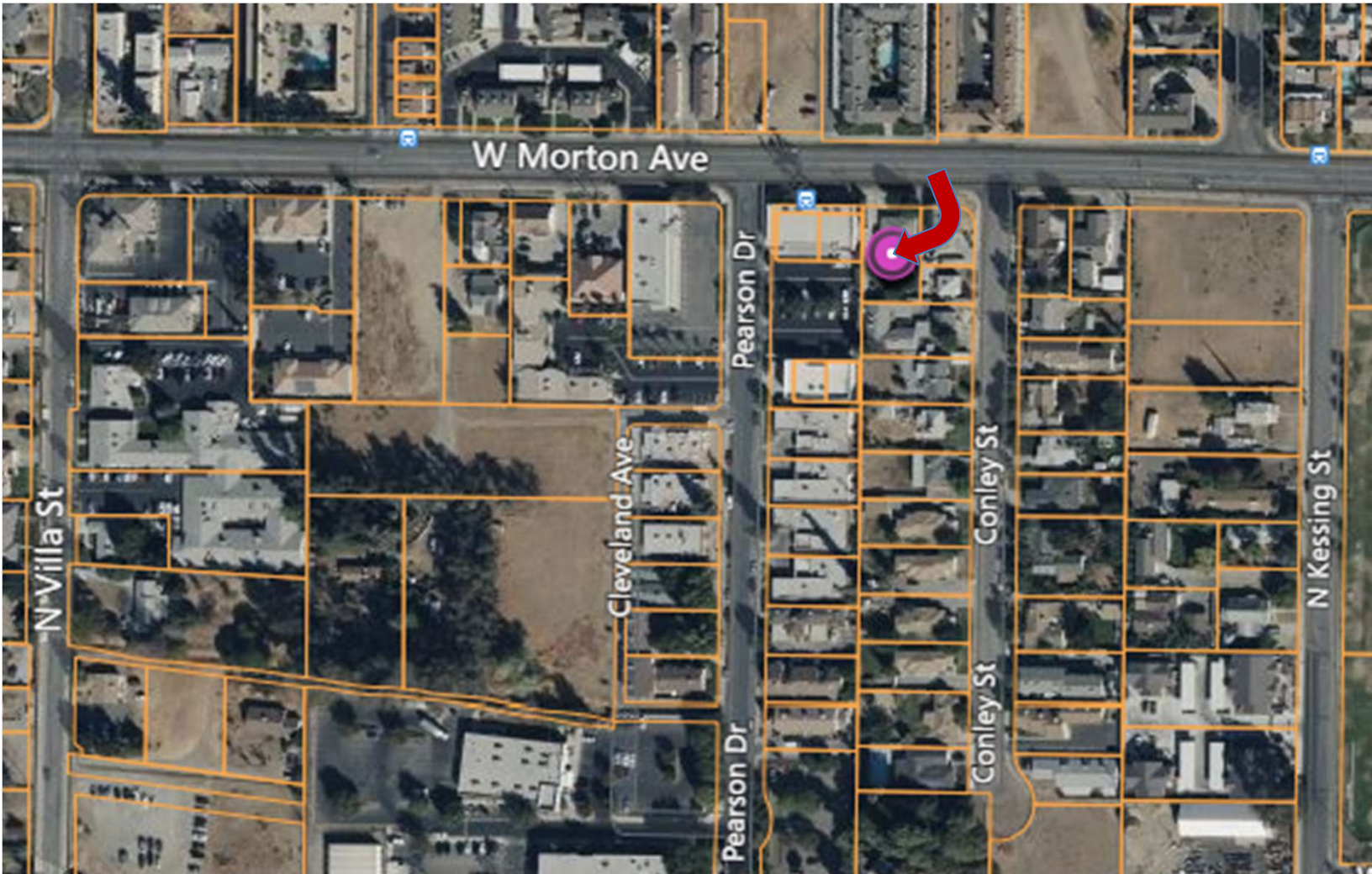


NO WARRANTY OR REPRESENTATION, EXPRESS OR IMPLIED, IS MADE AS TO THE ACCURACY OF THE INFORMATION CONTAINED HEREIN, AND THE SAME IS SUBMITTED SUBJECT TO ERRORS, OMISSIONS, CHANGE OF PRICE, RENTAL OR OTHER CONDITIONS, PRIOR SALE, LEASE OR FINANCING, OR WITHDRAWAL WITHOUT NOTICE, AND OF ANY SPECIAL LISTING CONDITIONS IMPOSED BY OUR PRINCIPALS NO WARRANTIES OR REPRESENTATIONS ARE MADE AS TO THE CONDITION OF THE PROPERTY OR ANY HAZARDS CONTAINED THEREIN ARE ANY TO BE IMPLIED.

# FOR LEASE

443 West Morton Avenue, Porterville, CA, USA

1 Private office w/ 3 offices w/ sink



For an interactive tour Scan with  
your smartphone camera



For more Information contact:

Clare Whitlatch, GRI  
Broker

DRE Lic.# 01898351  
559-737-1189

clare@whitlatch.net



Commercial Real Estate Services DRE Lic. 02202718

NO WARRANTY OR REPRESENTATION, EXPRESS OR IMPLIED, IS MADE AS TO THE ACCURACY OF THE INFORMATION CONTAINED HEREIN, AND THE SAME IS SUBMITTED SUBJECT TO ERRORS, OMISSIONS, CHANGE OF PRICE, RENTAL OR OTHER CONDITIONS, PRIOR SALE, LEASE OR FINANCING, OR WITHDRAWAL WITHOUT NOTICE, AND OF ANY SPECIAL LISTING CONDITIONS IMPOSED BY OUR PRINCIPALS NO WARRANTIES OR REPRESENTATIONS ARE MADE AS TO THE CONDITION OF THE PROPERTY OR ANY HAZARDS CONTAINED THEREIN ARE ANY TO BE IMPLIED.