

RETAIL FOR LEASE

Crystal Lake Plaza – 1,360 SF

3094 CURRY FORD RD, ORLANDO, FL 32806



AVAILABLE SPACES

Suite	Rate	Size	Type
3094	\$27.00 /SF/MO	1,360 SF	NNN

OFFERING SUMMARY

SPACE AVAILABLE:	1,360 SF
LEASE RATE:	\$27.00 /SF/MO
LEASE TYPE:	NNN
DRIVE THROUGH:	Yes
CURRY FORD RD AADT:	7,800
CRYSTAL LAKE AADT:	8,300
FUTURE LAND USE:	COMM-AC
BUILDING SIZE:	77,336 SF
ZONING:	AC-1
END CAP:	Yes

Property Overview

- Less than 10 minute drive to Downtown Orlando, near the trendy Hourglass district, this property is ideal for national, as well as local tenants. This is not a tourist destination, it is mainly local residents. Property is scheduled to be renovated.
- 10-Minute Drive Population (Esri): 154,725
- 10-Minute Drive Median HHI (Esri): \$61,605



CONTACT US

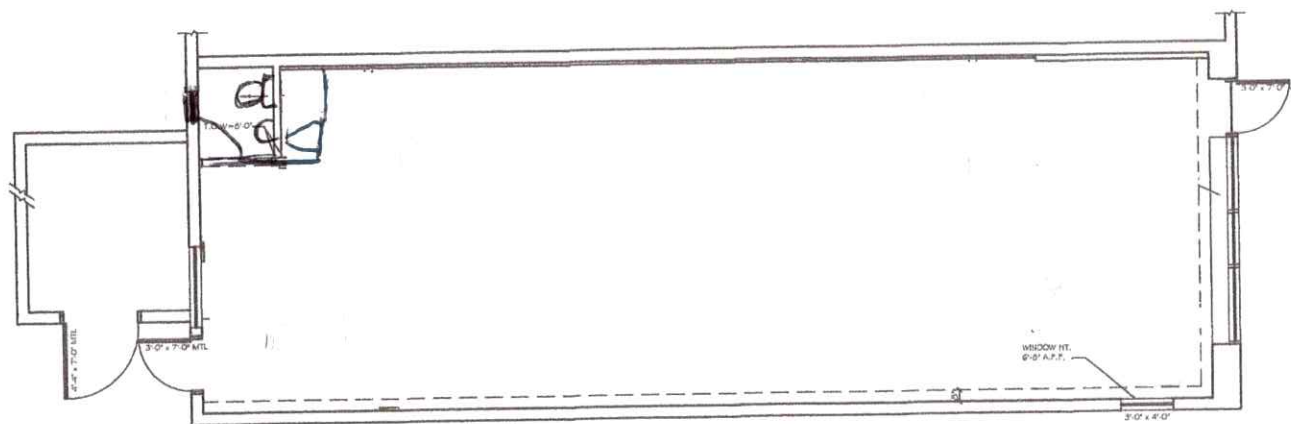
FRANCISCO JARAMILLO, CCIM

Principal, Managing Broker
(407) 683-4444

Francisco@407cre.com
BK 3252370, FL



3094 Curry Ford Rd
Orlando, FL, 32806



Crystal Lake Plaza