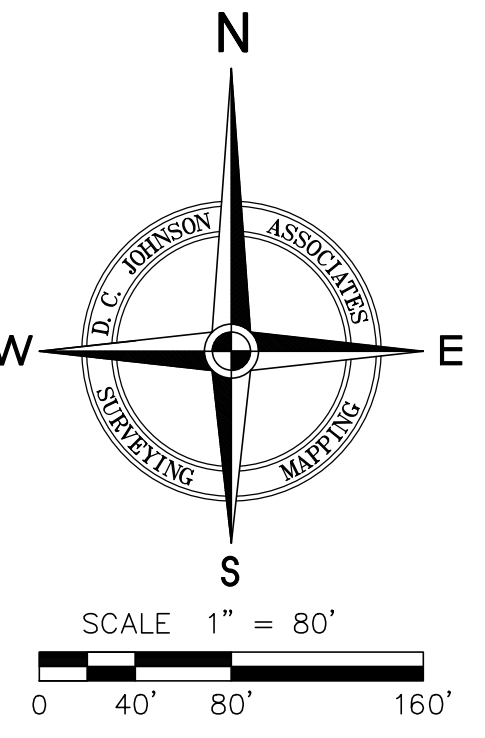
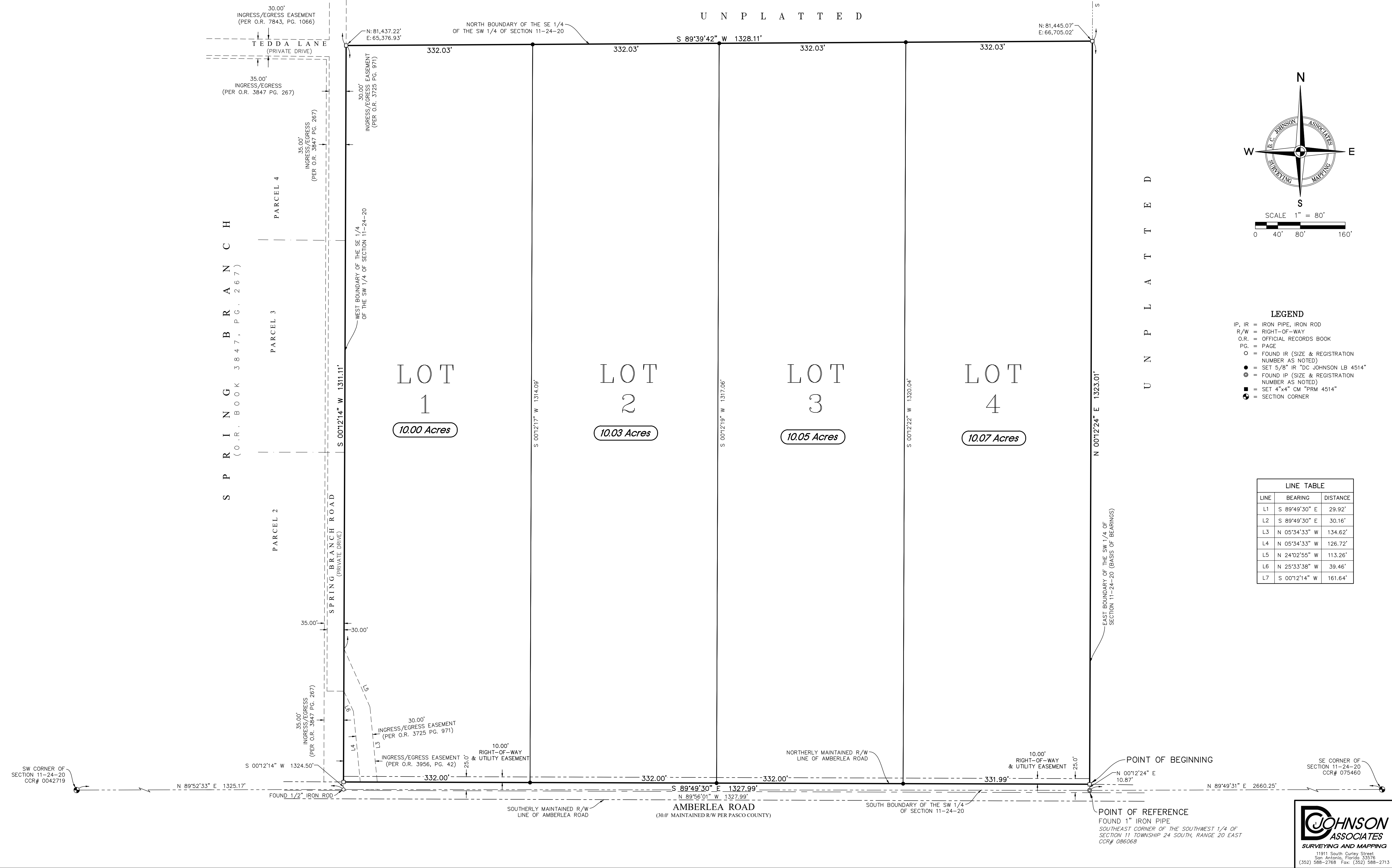


AMBERLEA ESTATES

SECTION 11, TOWNSHIP 24 SOUTH, RANGE 20 EAST, PASCO COUNTY, FLORIDA

U N P L A T T E D



- LEGEND**
- IP, IR = IRON PIPE, IRON ROD
 - R/W = RIGHT-OF-WAY
 - O.R. = OFFICIAL RECORDS BOOK
 - PG. = PAGE
 - = FOUND IR (SIZE & REGISTRATION NUMBER AS NOTED)
 - = SET 5/8" IR "DC JOHNSON LB 4514"
 - ⊙ = FOUND IP (SIZE & REGISTRATION NUMBER AS NOTED)
 - = SET 4"x4" CM "PRM 4514"
 - ⊙ = SECTION CORNER

LINE	BEARING	DISTANCE
L1	S 89°49'30" E	29.92'
L2	S 89°49'30" E	30.16'
L3	N 05°34'33" W	134.62'
L4	N 05°34'33" W	126.72'
L5	N 24°02'55" W	113.26'
L6	N 25°33'38" W	39.46'
L7	S 00°12'14" W	161.64'

POINT OF REFERENCE
FOUND 1" IRON PIPE
SOUTHEAST CORNER OF THE SOUTHWEST 1/4 OF
SECTION 11 TOWNSHIP 24 SOUTH, RANGE 20 EAST
CCR# 086068

